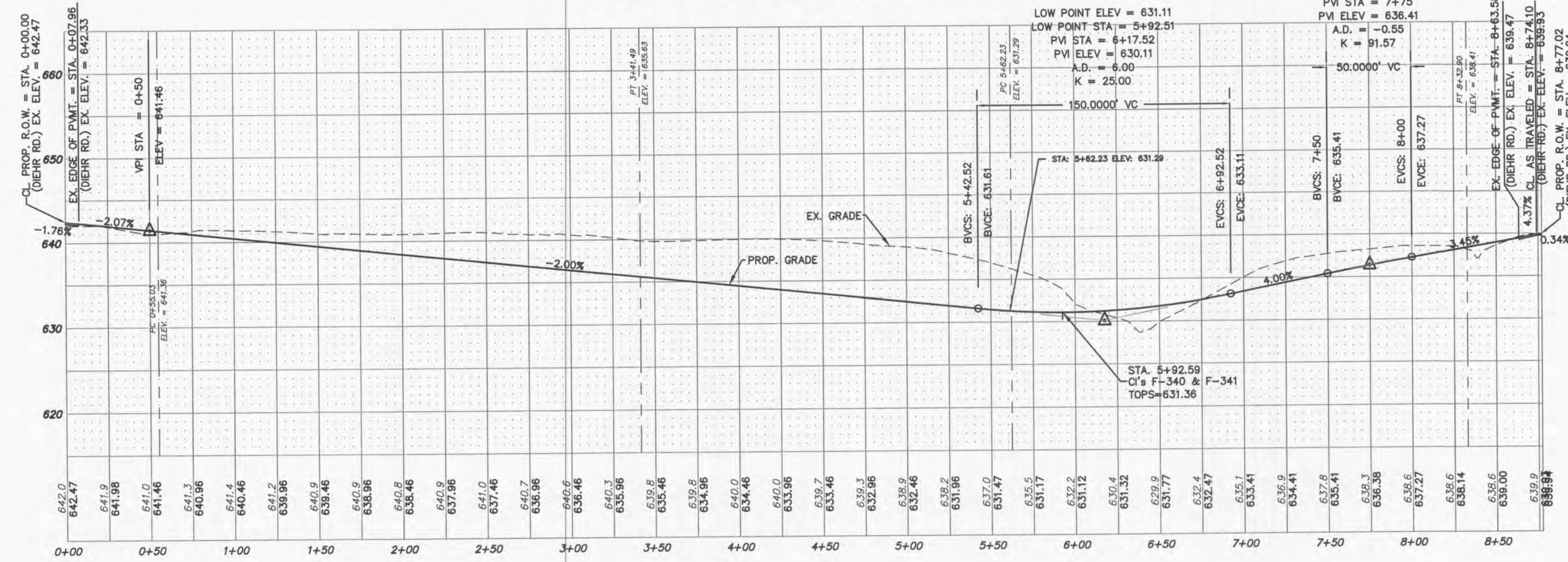


SCALE: 1"=50' HORIZONTAL
1"=10' VERTICAL

GATEHOUSE CIRCLE



NOTE: SEE ENTRANCE DETAILS
ON SHEET 7.

PROJECT TITLE
**WYNDGATE VILLAGE F
PLAT THREE**

PICKETT, RAY & SILVER INC
CIVIL ENGINEERING, LAND SURVEYING,
AND NATURAL RESOURCES SERVICES
Branson
110 West Adams, Suite 201
Branson, Mo 64616
Phone (636) 397-1211 Fax (636) 397-1104
www.prs6.com 1-800-706-3918

ENGINEERS AUTHENTICATION
THE RESPONSIBILITY FOR PROFESSIONAL
ENGINEERING LIABILITY ON THIS PROJECT
IS HEREBY LIMITED TO THE SET OF PLANS
AUTHENTICATED BY THE SEAL, SIGNATURE,
AND DATE HEREUNDER ATTACHED.
RESPONSIBILITY IS DISCLAIMED FOR ALL
OTHER ENGINEERING PLANS INVOLVED IN
THIS PROJECT AND SPECIFICALLY EXCLUDES
REVISIONS AFTER THIS DATE UNLESS
REAUTHENTICATED.
PICKETT, RAY & SILVER, INC
D. L. LINDSEY, M.D.
DOUGLAS E. TIEMANN
E-23345
PROFESSIONAL ENGINEER LICENSE E-23345

Developer / Owner Information
McBride Wyndgate, LLC
16091 Swingley Ridge Road, Suite 800
Chesterfield, Missouri 63077
CITY OF OFALLON STREET PROFILES

P+Z No. 3203

City No.

Page No.

6 of 25