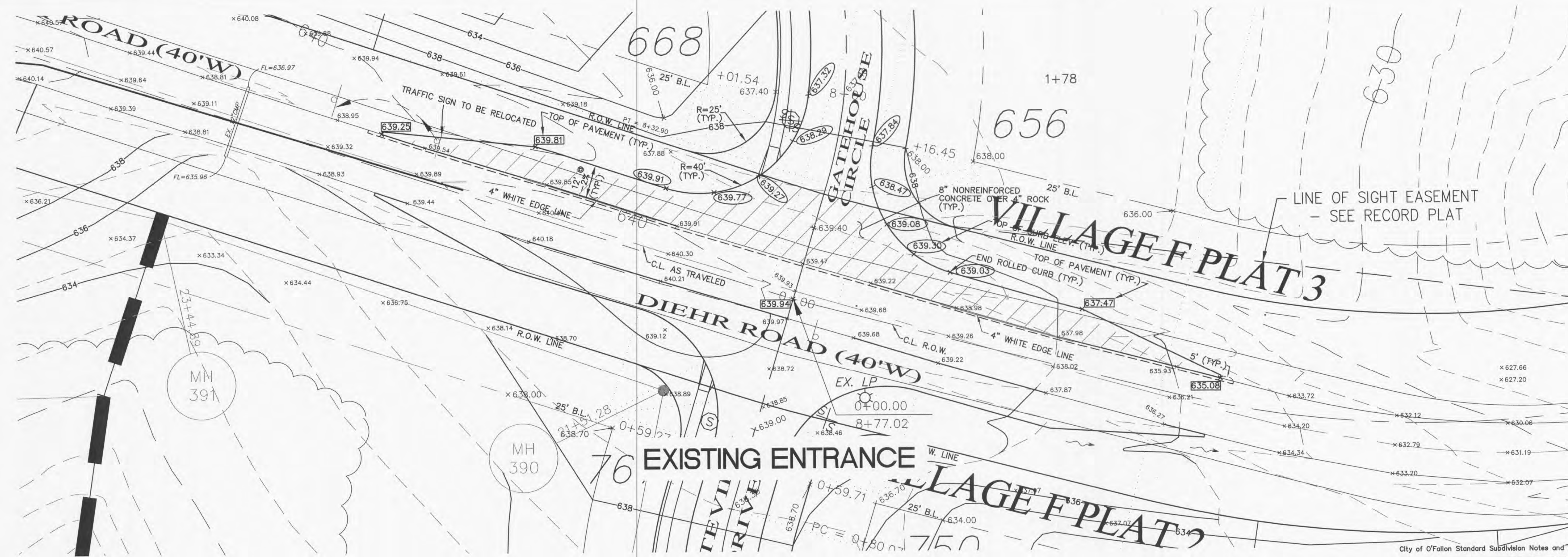


FUTURE DEVELOPMENT



EXISTING ENTRANCE

PROJECT TITLE

WYNDGATE VILLAGE F
PLAT THREE

PRS No. 01267.MCSO.02R

PICKETT, RAY & SILVER INC

CIVIL ENGINEERING, LAND SURVEYING,
AND NATURAL RESOURCES SERVICES

Branch
110 W. Court
Branndon, Mo 64516

Phone (636) 397-1211 Fax (636) 397-1104
www.prs.com 1-800-708-3916

ENGINEERS AUTHENTICATION
THE RESPONSIBILITY FOR PROFESSIONAL
ENGINEERING LIABILITY ON THIS PROJECT IS
HEREBY LIMITED TO THE SET OF PLANS
AUTHENTICATED BY THE SEAL, SIGNATURE,
AND DATE, HEREUNDER ATTACHED.
RESPONSIBILITY IS DISCLAIMED FOR ALL OTHER
ENGINEERING PLANS INVOLVED IN THIS
PROJECT AND SPECIFICALLY EXCLUDES
REVISIONS AFTER THIS DATE UNLESS
REALIGNED TO THIS PROJECT.
PICKETT, RAY & SILVER, INC. MO.
LICENSE #000025



DOUGLAS S. TIEMANN
PROFESSIONAL ENGINEER LICENSE E-23364

Developer / Owner Information

McBride Wyndgate, LLC
16091 Swingle Ridge Road, Suite 300
Chesterfield, Missouri 63077

CITY OF O'FALLON ENTRANCE DETAILS

P+Z No. 3203

City No.

Page No.

7 of 25