

# DUCKETT CREEK SANITARY DISTRICT WYNDGATE / DD WEST MBR WASTEWATER TREATMENT PLANT O'FALLON, MISSOURI

**BOARD OF TRUSTEES:**

CHAIR..... BILLY COLLIER  
 BOARD MEMBER..... LEO TIGUE  
 BOARD MEMBER..... JAMES BARRETT  
 BOARD MEMBER..... THOMAS OXLER  
 BOARD MEMBER..... BEN BLANTON

APPROVED BY: \_\_\_\_\_ DATE: \_\_\_\_\_

TOM ENGLE,  
 EXECUTIVE DIRECTOR DUCKETT CREEK SANITARY DISTRICT

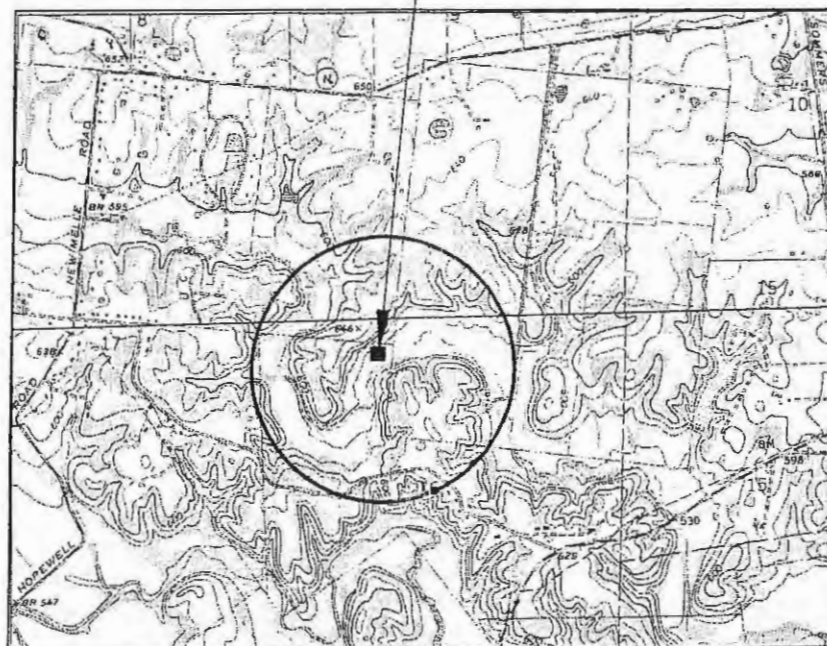
**CONTACT INFORMATION:**

MR. KEITH ARBUCKLE, PE ..... 636-441-1244

**CITY OF O'FALLON**

PATRICK BANGER ..... CITY ADMINISTRATOR  
 KEN MORGAN, P.E. .... MANAGING DIRECTOR/COMMUNITY DEVELOPMENT  
 CHARLES MOBLEY, P.E. .... DIRECTOR OF PUBLIC WORKS/CITY ENGINEER  
 MATT PRICKETT, AICP ..... DIRECTOR OF DEVELOPMENT SERVICES  
 DAVID WOODS ..... ASSISTANT DIRECTOR DEVELOPMENT SERVICES  
 MATT WHITWELL, MCO ..... DIRECTOR OF BUILDING SAFETY/BUILDING OFFICIAL  
 KARL EBERT ..... SENIOR CONSTRUCTION INSPECTOR  
 ART GENASCI, MCO ..... COMMERCIAL INSPECTOR/PLANS EXAMINER  
 JEANNIE GREENLEE, ENGINEER III

PROJECT  
 LOCATION



LOCATION MAP  
 NTS

JANUARY 2005  
 PROJECT NO. 23074030

E. T. ARCHER CORPORATION D.B.A.

# Archer

TOTAL PROJECT MANAGEMENT

CORPORATE OFFICE:  
 3741 N.E. TROON DRIVE  
 LEE'S SUMMIT, MO 64064  
 816-554-3019 • FAX 816-554-3061

OTHER OFFICE LOCATIONS:

- 8340 MISSION ROAD, SUITE 240, FRANK VILLAGE, KS 66706 • 913-852-8757 • FAX 816-347-1599
- 187 E. DAVIS, P.O. BOX 948, FORSYTH, MO 65653 • 417-546-3218 • FAX 417-546-3324
- 200 STARKS BUILDING, LOUISVILLE, KY 40202 • 502-581-8404 • FAX 502-581-8485
- 5151 HWY 54, STE F, ORANGE BEACH, MO 65065 • 573-348-5332 • FAX 573-348-3488
- 1051 KEMES HIGHWAY, SUITE 7, P.O. BOX 531, ROLLA, MO 65402 • 573-364-3470 • FAX 573-364-4120
- 355 CARPENTER DRIVE, HOLLISTER, MO 65573 • 417-234-7817 • FAX 417-334-0913
- 255 90 LINDEN, SPRINGFIELD, MO 65802 • 417-885-4083 • FAX 417-885-4085
- 1060 COUNTRY CLUB RD. ST. CHARLES, MO 63303 • 636-946-7020 • FAX 636-946-1571

**UTILITIES:**

**ELECTRIC:** CUIVRE RIVER ELECTRIC COOPERATIVE ..... (636)-441-7410  
 P.O. BOX 508, WENTZVILLE, MO 63385

AMERENUE ..... (636)-639-8310  
 200 CALLAHAN RD., WENTZVILLE, MO 63385

**GAS:** LACLEDE GAS COMPANY ..... (314)-658-5418  
 3950 FOREST PARK AVENUE, ST. LOUIS, MO 63108

**CABLE TV:** TCI CABLEVISION ..... (636)-441-7737  
 4160 OLD MILL PARKWAY, ST. CHARLES, MO 63301

CONTINENTAL CABLEVISION ..... (636)-625-1611  
 1194 LK ST. LOUIS BLVD., LAKE ST. LOUIS, MO 63367

**TELEPHONE:** SOUTHWESTERN BELL ..... (636)-949-1320  
 402 N. 3RD STREET, ST. CHARLES, MO 63301

GTE ..... (636)-639-3944  
 1000 GTE DRIVE, WENTZVILLE, MO 63385

**WATER:** MISSOURI CITIES WATER ..... (636)-441-4449  
 P.O. BOX 390, COTTLEVILLE, MO 63338

ST. CHARLES PWSO #2 .....  
 100 WATER DRIVE, O'FALLON, MO 63366

**UTILITY NOTES:**

VISUAL INDICATIONS OF UTILITIES ARE AS SHOWN. UNDERGROUND LOCATIONS SHOWN, AS FURNISHED BY THEIR LESSORS, ARE APPROXIMATE AND SHOULD BE VERIFIED IN THE FIELD AT THE TIME OF CONSTRUCTION. FOR ACTUAL FIELD LOCATIONS OF UNDERGROUND UTILITIES CALL 1-800-344-7483, MISSOURI.



Dwg Name: 4027-COV.dwg Plot Scale: 1"=1 Drafter: FL Date:

E.T. ARCHER CORPORATION

PRIMARY CONTACT:  
 R.C. PALMER, PE  
 636-946-7020

ALTERNATE CONTACT:  
 ALISSIA FEELER, EIT  
 636-946-7020

- PRELIMINARY PLANS
- BID PLANS
- PLANS CONFORMING TO CONSTRUCTION RECORDS

