

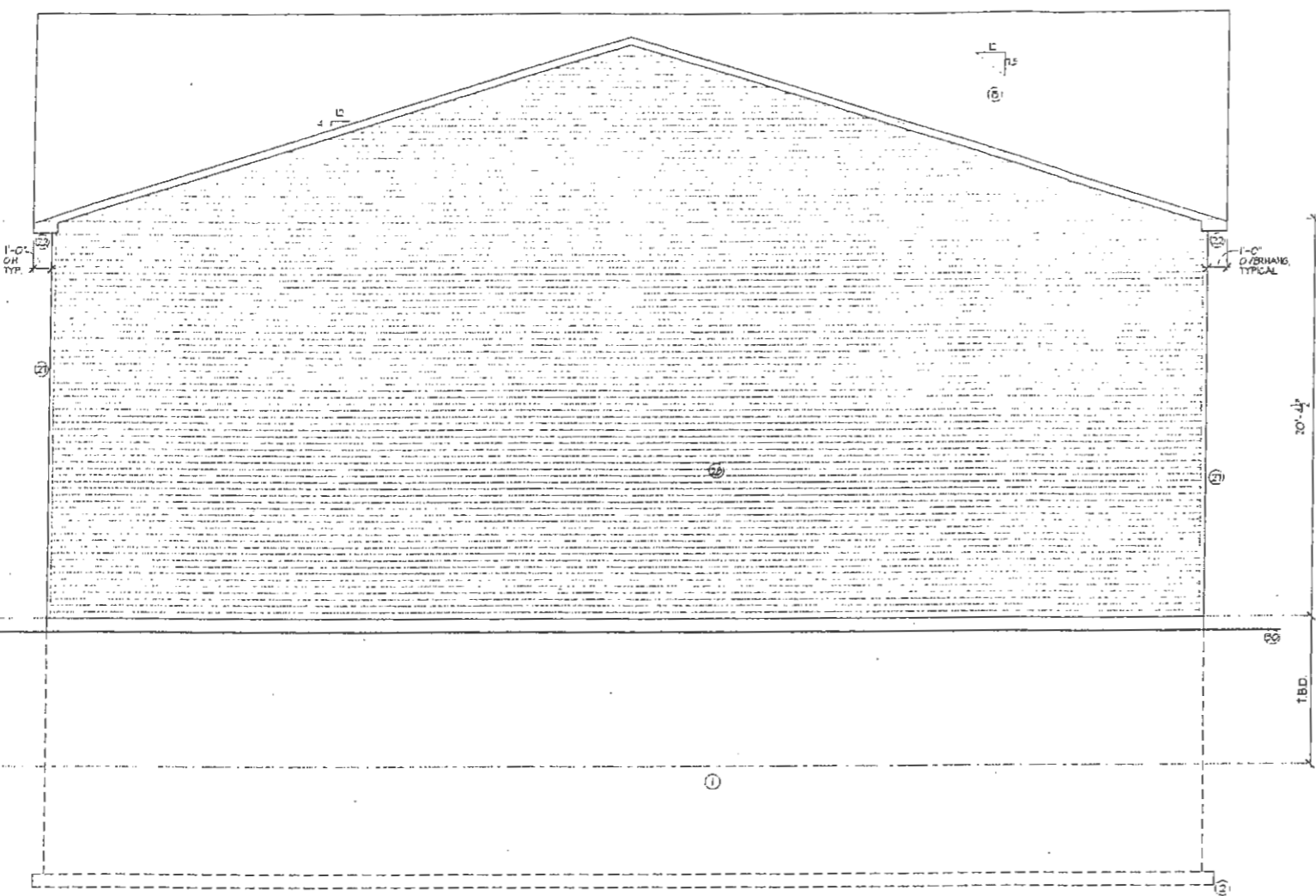
DRAWN BY: REB
CHECKED BY: SGS

PREPARED BY:
T.R. HUGHES INC.
BUILDING COMPANY
Phone: (561) 940-6600
Fax: (561) 940-6977
229 Fort Hill Road
St. Charles, MO 63001

PROPOSED MASTER PLAN FOR THE:
MBR SEWAGE TREATMENT PLANT
FOR **T.R. HUGHES INC.**
© Copyright, P.R. 2004

FRONT AND REAR ELEVATIONS

SHEET



REAR ELEVATION

SCALE 1/4" = 1'-0"

KEYED ELEVATION NOTES

- | | |
|---|--|
| <ul style="list-style-type: none"> ① 8" CONCRETE FOUNDATION WALL ② 22" x 8" CONCRETE FOOTING ③ 8" CONCRETE FOUNDATION WALL ON 20" x 8" CONCRETE FOOTING AT GARAGE LOW POOR ④ 1/2" ANCHOR BOLTS TO COLUMN & MINIMUM 6" INTO CONCRETE (OR MASONRY PIER) ⑤ CONCRETE STAIRS (OR SILL) ⑥ 4" CONCRETE SLAB PATIO (OR PORCH) SLOPE 1/4" PER 12" AWAY FROM FOUNDATION WALL ⑦ CONCRETE FOUNDATION WALL AND FOOTING B HALKOUT OPTION ⑧ FIELD DETERMINE EXACT LOCATION OF FOOTING "STEP-DOWN" AT JOB SITE ⑨ 5" x 5 (2" x 5/8") STEEL ANGLE BRICK LINTEL ⑩ BRICK VEEBEE ⑪ SLOPED BRICK ROWLOCK SILL W/ FLASHING ⑫ BRICK SOLDIER COURSE AS SHOWN (PROJ. 5/8") ⑬ BRICK HEADER COURSE (PROJ. 5/8") ⑭ KEYSTONE (CUT STONE) ⑮ FIBERGLASS SHINGLES WITH SEALED DOWN TAGS ⑯ INTERLACE SHINGLES OVER 5/4 ROLLED ROOFING ⑰ METAL FLASHING ⑱ SADDLE WITH FLASHING ⑲ BUTTER OVER 2 x 6 FASCIA BOARD WITH ALUMINUM WRAP ⑳ SHINGLE P.L.D.S. OVER 2 x 6 RAKE BOARD WITH ALUMINUM WRAP | <ul style="list-style-type: none"> ㉑ 2 x 6 SHADON BOARD WITH ALUMINUM WRAP ㉒ ENCLOSED ALUMINUM SOFFIT (VERTICAL) ㉓ ALUMINUM WRAP PORCH BEAM ㉔ 3/16" O.S.B. PORCH CEILING WITH ALUMINUM SOFFIT ㉕ 5" ROUND FLUTED ALUMINUM COLUMN (STRUCTURAL) WITH BASE & CAP ㉖ ALUMINUM WRAP GARAGE DOOR FRAME ㉗ VINYL CORNER TRIM (SEE ELEVATION FOR WIDTH) ㉘ DOUBLE 4" VINYL SCROTS ㉙ PRE-FINISHED VINYL SHUTTERS - 5" WIDE (SLID); SEE ELEV. TO DETERMINE IF LOWER OR PANEL TYPE ㉚ GRADE - SLOPE 1" TO 1'-0" HOR. FOR A MINIMUM DISTANCE OF 8'-0" OR TO A SHALE ㉛ CANTILEVER, PROVIDE EXTERIOR GRADE SOFFIT, INSULATE TO R-H MIN. AND VENT FLOOR JOISTS CAVITY. ㉜ 17" x 80" Sidelight WITH THERMO-INSULATED GLASS ㉝ IN200, 2-LITE, STEEL SASH HOPPER TYPE BASED ENT HINDOK ㉞ 24" x 36" ALUMINUM SCREENED LOWER ㉟ "STYLE SOLUTIONS" SCRIPTS COORDINATION RAHS HEAD PEDIMENT ㊱ "STYLE SOLUTIONS" APPLS/MOP PLAIN PLASTERS (VERIFY HEIGHT OF DOOR OPENING) ㊲ "STYLE SOLUTIONS" #ARB&WP FLAT ARCH TRIM ㊳ "STYLE SOLUTIONS" #METS-2-5 FLAT TRIM MOULDING |
|---|--|

GENERAL ELEVATION NOTES

1. FRONT ELEVATION "A" REFERS TO THE BASE PLAN.
2. SEE BASE PLANS / ELEVATIONS AND DETAIL SHEET FOR ADDITIONAL INFORMATION.
3. SECURELY BARRICADE DOORS TO DECK UNTIL DECK IS BUILT AND APPROVED.
4. BASEMENTS HAVING CONCRETE FOUNDATION WALLS WITH MORE THAN 20% EXPOSURE ABOVE FINISHED GRADE SHALL BE INSULATED. SEE GENERAL NOTES.
5. WINDOW DESIGNATIONS ARE THOSE OF "ANDERSEN 200 SERIES" WINDOWS.
6. ROOF FLASHING: PROVIDE CORROSION RESISTANT METAL FLASHING AT ALL ROOF VALLEYS, HALL AND CHIMNEY INTERSECTIONS, PORCHES, DECKS, ETC.. ROLLED ROOFING OR TWO LAYERS OF TYPE 1 UNDERLAYMENT MAY BE SUBSTITUTED FOR FLASHING AT ROOF VALLEYS PROVIDED THE SHINGLES ARE INTERLACED.

FRONT ELEVATION

SCALE 1/4" = 1'-0"

