

KEYED ELEVATION NOTES

DATE
11-10-04

REVISED

12-14-04
0-27-04

DRAWN BY REB
CHECKED BY SGS

PREPARED BY:



209 Fox Hill Road
St. Charles, MO 63030
Phone (636) 940-9800
Fax (636) 940-9777

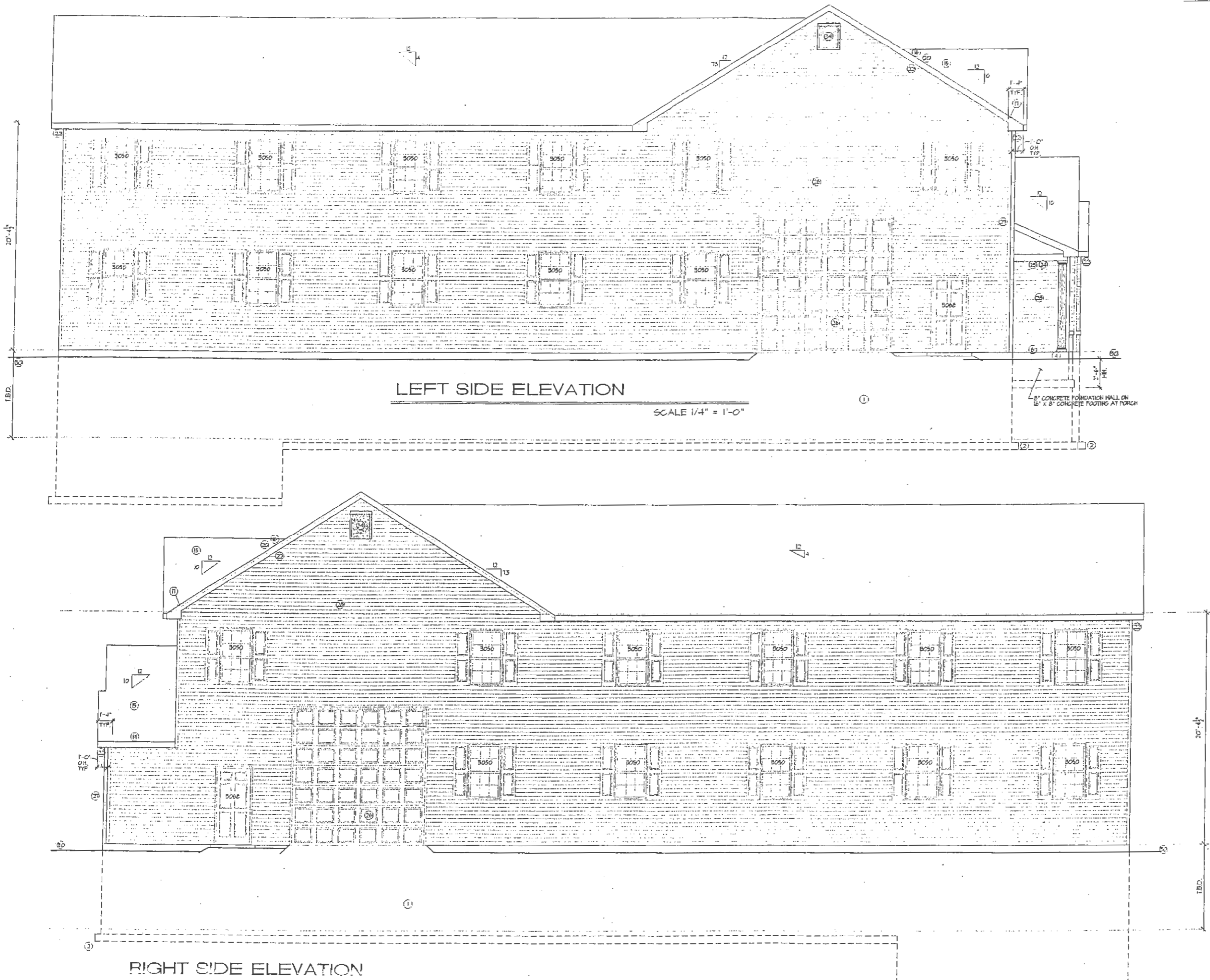
PROPOSED MASTER PLAN FOR THE
MBR SEWAGE TREATMENT PLANT

FOR T.R. HUGHES INC.
BUILDING COMPANY

RIGHT AND LEFT SIDE
ELEVATIONS

SHEET

2



LEFT SIDE ELEVATION

SCALE 1/4" = 1'-0"

RIGHT SIDE ELEVATION

- 1) 8" CONCRETE FOUNDATION WALL
- 2) 22" x 8" CONCRETE FOOTING
- 3) 8" CONCRETE FOUNDATION WALL ON 22" x 8" CONCRETE FOOTING AT GARAGE LOW FLOOR
- 4) 12" ANCHOR BOLTS TO COLUMN & MINIMUM 8" INTO CONCRETE (FOR MASONRY PIER)
- 5) CONCRETE STAIRS (OR BELL)
- 6) 4" CONCRETE SLAB PATCH (OR PORCH) SLOPE 1/4" PER 12" AWAY FROM FOUNDATION WALL
- 7) CONCRETE FOUNDATION WALL AND FOOTING @ HALLWAY OPTION AT JOB SITE
- 8) FIELD DETERMINE EXACT LOCATION OF FOOTING "STEP-DOWN" AT JOB SITE
- 9) 3" x 3" x 3/8" STEEL ANGLE BRICK LINTEL
- 10) BRICK VEEBEE
- 11) SLOPED BRICK ROOFLOFT SILL W/ FLASHING
- 12) BRICK SOLDIER COURSE AS SHOWN (PROJ. 3/8")
- 13) BRICK HEADER COURSE AS SHOWN (PROJ. 3/8")
- 14) LEISTONE SCUT STONE
- 15) FIBERGLASS SHIMBLES WITH SEALED DOWN TABS
- 16) INTERLAGE SHIMBLES OVER 1/4" ROLLED ROOFING
- 17) METAL FLASHING
- 18) SHINGLE WITH FLASHING
- 19) GUTTER OVER 2" x 4" FASCIA BOARD WITH ALUMINUM WRAP
- 20) SHIMBLE HUBS OVER 2" x 6" RAFTER BOARD WITH ALUMINUM WRAP
- 21) 2" x 1" SHADON BOARD WITH ALUMINUM WRAP
- 22) DISCLOSED ALUMINUM SOFFIT (VERTICAL)
- 23) ALUMINUM WRAP PORCH BEAM
- 24) 3/8" OSB PORCH CEILING WITH ALUMINUM SOFFIT
- 25) 6" ROUND FLUTED ALUMINUM COLUMN (STRUCTURAL) WITH BASE 1 CAP
- 26) ROLLUP GARAGE DOOR (ALUMINUM)
- 27) VINYL CORNER TRIM (SEE ELEVATION FOR HDN)
- 28) DOUBLE 4" VINYL SIDING
- 29) PRE-FINISHED VINYL SHUTTERS - 5" WIDE (UNO); SEE ELEV. TO DETERMINE IF LOWER OR PANEL TYPE
- 30) GRADE - SLOPE 1" TO 1'-0" HOR. FOR A MINIMUM DISTANCE OF 5'-0" OR TO A SHALE
- 31) CANTILEVER FRODOX EXTERIOR GRADE SOFFIT, INSULATE TO R-MIN AND VENT FLOOR JOISTS CAVITY
- 32) 12" x 80" SIDELIGHT WITH TEMPERED INSULATED GLASS
- 33) W/20, 3" LITE, STEEL SASH, HOPPER TYPE BASEMENT WINDOW
- 34) 24" x 56" ALUMINUM SCREEDED LOWER
- 35) "STYLE SOLUTIONS" KRAFTS COMBINATION RAHS HEAD PIEDMENT
- 36) "STYLE SOLUTIONS" PILES W/OP PLAIN PLASTERS (VERIFY HEIGHT OF DOOR OPENING)
- 37) "STYLE SOLUTIONS" FARBHAF FLAT ARCH TRIM
- 38) "STYLE SOLUTIONS" W/1150-5 FLAT TRIM HOLDING

GENERAL ELEVATION NOTES

1. FRONT ELEVATION "A" REFERS TO THE BASE PLAN.
2. SEE BASE PLANS / ELEVATIONS AND DETAIL SHEET FOR ADDITIONAL INFORMATION.
3. SECURELY BARRICADE DOORS TO DECK, UNTIL DECK IS BUILT AND APPROVED.
4. BASEMENTS HAVING CONCRETE FOUNDATION WALLS WITH MORE THAN 20% EXPOSURE ABOVE FINISHED GRADE SHALL BE INSULATED. SEE GENERAL NOTES.
5. WINDOW DESIGNATIONS ARE THOSE OF "ANDERSEN 200 SERIES" WINDOWS.
6. ROOF FLASHING: PROVIDE CORROSION RESISTANT METAL FLASHING AT ALL ROOF VALLEYS, WALL AND CHIMNEY INTERSECTIONS, PORCHES, DECKS, ETC. ROLLED ROOFING OR TWO LAYERS OF TYPE I UNDERLAYMENT MAY BE SUBSTITUTED FOR FLASHING AT ROOF VALLEYS PROVIDED THE SHINGLES ARE INTERLAGED.