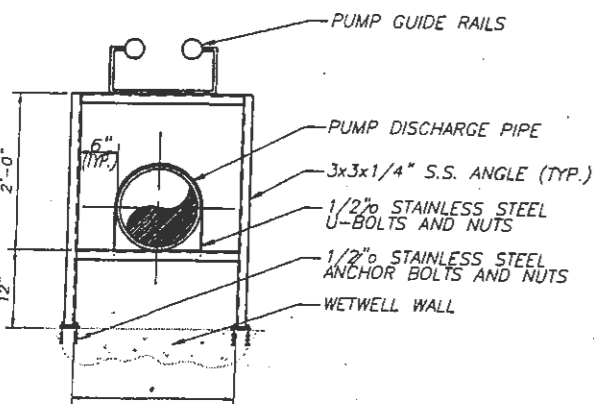


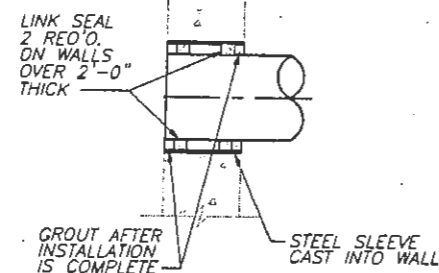
- LEGEND**
- ① CHAIN HOOK SAFETY BRACKET
 - ② UPPER GUIDE RAIL MOUNTING BRACKET
 - ③ GUIDE RAIL MOUNTING BRACKETS (TYP. 3 PER PUMP) PER MANUFACTURER
 - ④ STAINLESS STEEL GUIDE RAILS
 - ⑤ CHAIN HOOK PUMP RETRIEVAL SYSTEM



NOTES:
 * CONTRACTOR SHALL VERIFY SUPPORTS SPACED 10'-0" MAXIMUM.

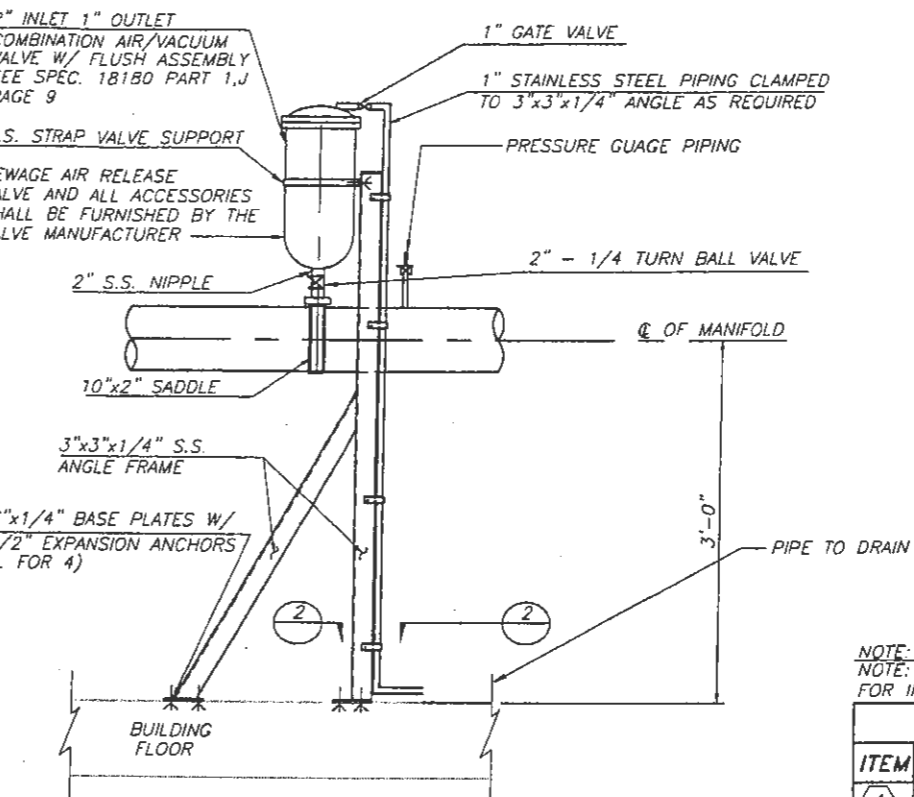
PIPE AND GUIDERAIL SUPPORT
 SCALE: NTS

SECTION 3
 SCALE: NTS

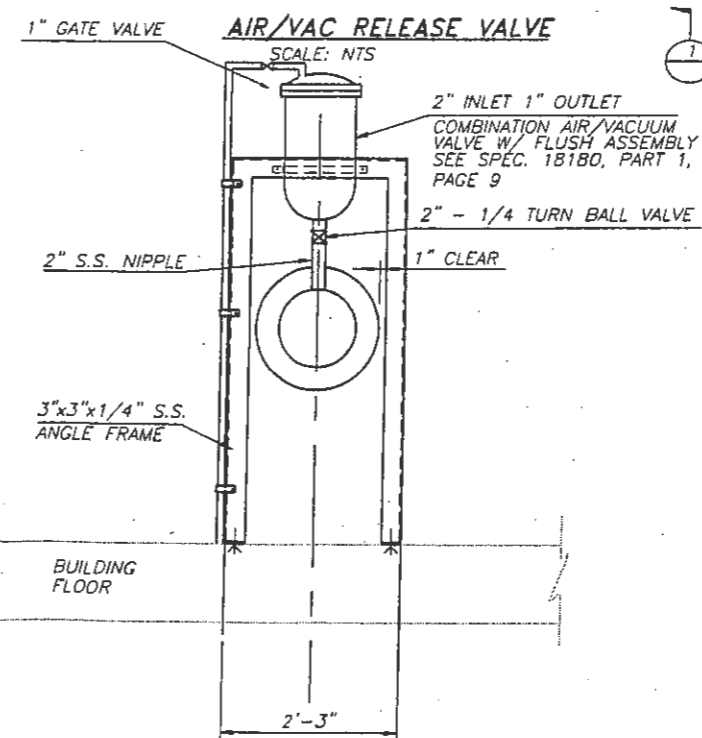


LINK SEALS MUST BE ADJUSTABLE FROM INSIDE WETWELL OR FROM OPERATIONS FLOOR.

DRAIN PIPE PENETRATION INTO WETWELL SECTION
 SCALE: NTS



3"x6"x1/4" BASE PLATES W/
 2-1/2" EXPANSION ANCHORS
 (TYP. FOR 4)



SECTION 1
 SCALE: NTS

NOTE:
 NOTE: SEE MANUFACTURER'S OPERATIONS AND MAINTENANCE MANUAL FOR FOR INSTALLED EQUIPMENT DETAILS

| PUMP STATION PIPING AND VALVE SCHEDULE | | |
|--|--|--|
| ITEM | DESCRIPTION | REMARKS |
| ① | SUBMERSIBLE PUMP, NON-CLOG | SEE SPEC 11308 |
| ② | 4"x90" ELBOW | FLG. x FLG. |
| ③ | 4" WALL PIPE | FLG. x FLG. |
| ④ | 4" SWING CHECK VALVE | FLG. x FLG. |
| ⑤ | NOT USED | |
| ⑥ | 4" PLUG VALVE | FLG. x FLG. |
| ⑦ | 6" WALL PIPE W/ THRUST COLLAR | FLG. x M.J. |
| ⑧ | NOT USED | |
| ⑪ | 6"x6"x4" REDUCING TEE | M.J. |
| ⑭ | NOT USED | |
| ⑮ | NOT USED | |
| ⑯ | 4" PIPE | FLG. x FLG. |
| ⑰ | NOT USED | |
| ⑱ | 4" BASE ELBOW FOR PUMP | |
| ⑲ | WET WELL INFLUENT PIPE | |
| ⑳ | 1 1/2" DOOR FRAME DRAIN | PVC |
| ㉑ | 4" FLOOR DRAIN | |
| ㉒ | NOT USED | |
| ㉔ | 4" DRAIN | 2% MIN. SLOPE |
| ㉕ | 4" BACK WASH CHECK VALVE | TIDEFLEX, TF-2, OR EQUAL |
| ㉘ | TAP FOR 2" NPT FOR AIR/VAC RELEASE VALVE | WASTEWATER COMBINATION AIR/VAC VALVE, & RELATED FITTINGS & VALVING |

| | | | | | | | | | | |
|--|---------------------|--------------------------------|-------------------|---|--|---|--|---|--|---|
| DRAWING FILE NAME: PSSECTION.DWG | | DOCUMENT NO.: | USER I.O.: | E. T. ARCHER CORPORATION D.B.A. | | OTHER OFFICE LOCATIONS | | WYNDGATE/ DD WEST MBR WWTP DUCKETT CREEK SANITARY DISTRICT O'FALLON, MISSOURI | | PROJECT NO. 23074030 |
| DATE LAST SAVED: 1/14/05 | PLOT SCALE: | DATE/TIME PLOTTED: 01/14/05 | | Archer TOTAL PROJECT MANAGEMENT | | 8340 MISSION ROAD, SUITE 240, PRIME VILLAGE, MS 39206 • 601-552-6757 • FAX 601-347-1300 187 E. DAVID, P.O. BOX 986, FORSYTH, MS 38653 • 417-546-3218 • FAX 417-546-5324 800 STARKS BUILDING, LOUISVILLE, KY 40202 • 502-581-8484 • FAX 502-581-9405 1000 CITY PARKWAY, OSAGE BEACH, MO 65065 • 573-348-3222 • FAX 573-348-3469 1051 NORTHS HIGHWAY, SUITE 7, P.O. BOX 537, BOLLA, MO 65402 • 573-384-3420 • FAX 573-384-4170 355 CARPENTER DRIVE, HOLLISTER, MO 65872 • 417-334-7812 • FAX 417-334-8912 255 SO. LINCOLN, SPRINGFIELD, MO 65802 • 417-865-4083 • FAX 417-865-4083 1000 COUNTRY CLUB ROAD, ST. CHARLES, MO 63105 • 636-966-1020 • FAX 636-966-7571 | | PUMP STATION SECTION | | DRAWING NO. PS-2 |
| FILES ATTACHED: 2 | DESIGNED BY: AGF | DRAWN BY: | CHECKED BY: PY | | | | | | | CORPORATE OFFICE: 3741 NE TROON DRIVE LEE'S SUMMIT, MO 64064 |
| ATTACHED FILE NAMES: borderret, ps611staref | | | | | | | | | | |