

GENERAL NOTES:

- 1.) THE UTILITIES SHOWN HEREIN WERE PLOTTED FROM AVAILABLE INFORMATION AND DO NOT NECESSARILY REFLECT THE ACTUAL EXISTENCE, NON-EXISTENCE, SIZE, TYPE, OR LOCATION OF THESE OR OTHER UTILITIES. THE CONTRACTOR SHALL BE RESPONSIBLE FOR VERIFYING THE ACTUAL LOCATION OF ALL UTILITIES, SHOWN OR NOT SHOWN, AND SAID UTILITIES SHALL BE LOCATED IN THE FIELD PRIOR TO ANY CONSTRUCTION OF IMPROVEMENTS. THESE PROVISIONS SHALL IN NO WAY ABSOLVE ANY PARTY FROM COMPLYING WITH THE UNDERGROUND FACILITY SAFETY AND DAMAGE PREVENTION ACT, CHAPTER 319 RSMo.
- 2.) ALL ELEVATIONS ARE BASED ON U.S.G.S. DATUM.
- 3.) BOUNDARY AND TOPOGRAPHIC SURVEY BY J.R. GRIMES CONSULTING ENGINEERS, INC.
- 4.) ALL MATERIALS AND METHODS OF CONSTRUCTION TO MEET THE CURRENT STANDARDS AND SPECIFICATIONS OF THE CITY OF O'FALLON
- 5.) ALL GRADED AREAS SHALL BE PROTECTED FROM EROSION BY EROSION CONTROL DEVICES AND/OR SEEDING AND MULCHING AS REQUIRED BY THE CITY OF O'FALLON
- 6.) PRIOR TO BEGINNING ANY WORK ON THE SITE, THE CONTRACTOR SHALL CONTACT THE OFFICE OF THE DEVELOPER FOR SPECIFIC INSTRUCTIONS RELEVANT TO THE SEQUENCING OF WORK.
- 7.) GRADING CONTRACTOR SHALL INSTALL SILTATION CONTROL PRIOR TO STARTING THE GRADING. ADDITIONAL SILTATION CONTROL DEVICES SHALL BE INSTALLED PER THE CITY OF O'FALLON
- 8.) ALL FILLS AND BACKFILLS SHALL BE MADE OF SELECTED EARTH MATERIALS, FREE FROM BROKEN MASONRY, ROCK, FROZEN EARTH, RUBBISH, ORGANIC MATERIAL AND DEBRIS.
- 9.) GRADING CONTRACTOR SHALL KEEP EXISTING ROADWAYS CLEAN OF MUD AND DEBRIS AT ALL TIMES.
- 10.) PROPOSED CONTOURS SHOWN ARE FINISHED ELEVATIONS ON PAVED AREAS.
- 11.) NO GRADE SHALL EXCEED 3:1 SLOPE.
- 12.) A GRADING PERMIT IS REQUIRED PRIOR TO ANY GRADING ON THE SITE. NO CHANGE IN WATERSHEDS SHALL BE PERMITTED.
- 13.) INTERIM STORMWATER DRAINAGE CONTROL IN THE FORM OF SILTATION CONTROL MEASURES ARE REQUIRED.
- 14.) THE DEVELOPER IS REQUIRED TO PROVIDE ADEQUATE STORMWATER SYSTEMS IN ACCORDANCE WITH THE CITY OF O'FALLON
- 15.) ALL STORMWATER SHALL BE DISCHARGED AT AN ADEQUATE NATURAL DISCHARGE POINT.

SANITARY SEWER NOTES:

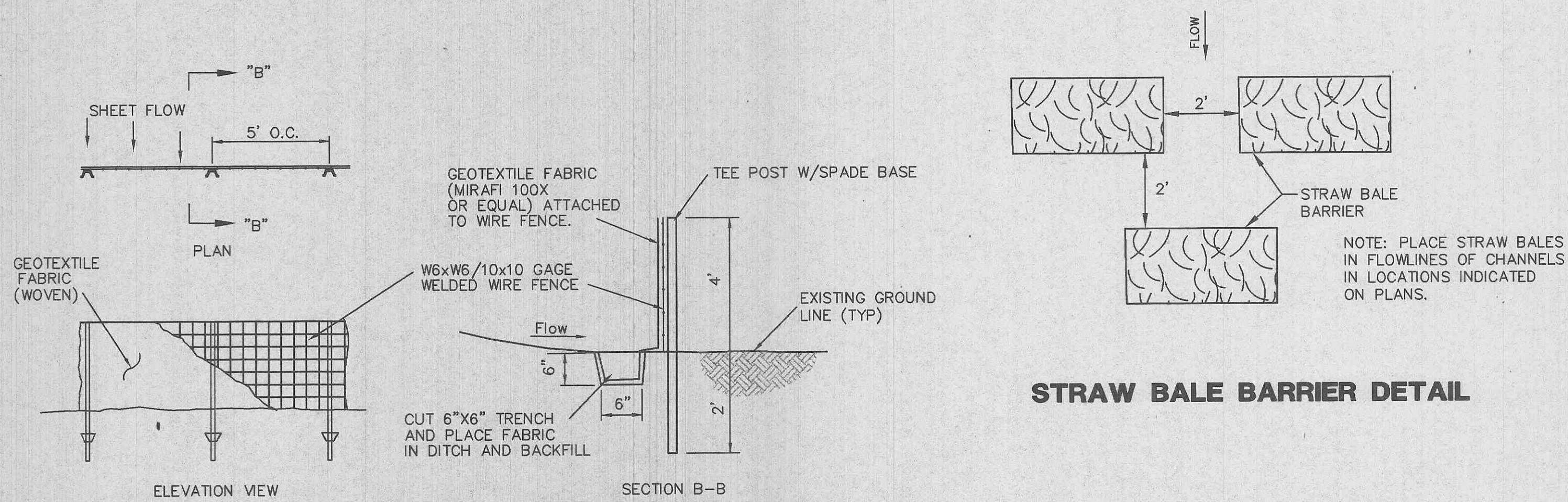
- 1.) ALL MATERIALS AND METHODS OF CONSTRUCTION FOR STORM SEWERS TO MEET REQUIREMENTS OF THE CITY OF O'FALLON
- 2.) ALL 8" MAINS AND 6" LATERALS TO BE CONSTRUCTED OF P.V.C. SDR-35 THICKWALL PIPE, A.S.T.M. D-3034.
- 3.) ALL 8" MAIN AND 6" LATERAL JOINTS TO CONFORM TO A.S.T.M. STANDARD PR SDR-35 THICKWALL COMPRESSION JOINT FOR P.V.C.
- 4.) ALL LATERAL SEWER CONSTRUCTION METHODS TO CONFORM TO LATEST STANDARDS AND SPECIFICATIONS OF THE LOCAL PLUMBING CODE.
- 5.) ALL TRENCHES UNDER AREAS TO BE PAVED SHALL BE GRANULARLY FILLED WITH 3/4" CRUSHED LIMESTONE. BACKFILL SHALL BE PLACED IN ACCORDANCE WITH THE CITY OF O'FALLON.
- 6.) CONTRACTOR TO START LAYING PIPE AT DOWNSTREAM MANHOLE AND WORK UPSTREAM.
- 7.) TAILSTAKE ELEVATIONS ARE SHOWN ON THE SANITARY SEWER PROFILES.
- 8.) CLEANOUTS SHALL BE LOCATED AT ALL HORIZONTAL AND VERTICAL CHANGES IN DIRECTION OF FLOW OF HOUSE LATERALS AND ANY SANITARY LATERAL OF 100 FEET OR LONGER.
- 9.) VERTICAL CLEARANCE BETWEEN SEWER AND WATER MAINS SHALL BE A MINIMUM OF 2' - 0".

EARTHWORK NOTES:

- BULK CUT.....+ CUBIC YARD
BULK FILL.....+ CUBIC YARD
- THE ENGINEER HAS CALCULATED THE ABOVE QUANTITIES OF EARTHWORK TO BE REGARDED AS AN ESTIMATE OF THE BULK MOVEMENT OR REDISTRIBUTION OF SOILS ON THIS PROJECT. AS AN ESTIMATE, THESE QUANTITIES ARE INTENDED FOR GENERAL USE, AND THE ENGINEER ASSUMES NO LIABILITY FOR COST OVERRUNS DUE TO EXCESS EXCAVATED MATERIALS OR SHORTAGES OF FILL.
- THE QUANTITIES ESTIMATED FOR EACH OF THE IMPROVEMENT ITEMS LISTED ABOVE ARE BASED UPON THE HORIZONTAL AND VERTICAL LOCATION OF THE IMPROVEMENTS AS PROPOSED ON THE SITE ENGINEERING PLANS PREPARED BY J. R. GRIMES CONSULTING ENGINEERS.
- THE ENGINEER'S EARTHWORK ESTIMATE DOES NOT INCLUDE ANY OF THE FOLLOWING ITEMS REQUIRING EARTHWORK THAT MAY BE NECESSARY FOR COMPLETION OF THE PROJECT: MISCELLANEOUS UNDERGROUND CONDUITS, INCLUDING SEWER LINES AND WATER MAINS LESS THAN TWENTY-FOUR INCHES IN DIAMETER, STANDARD MANHOLES, PROCESS OR TRANSFER PIPING, ELECTRICAL OR TELEPHONE CONDUITS, BASES FOR LIGHT STANDARDS, BUILDING FOOTINGS AND FOUNDATIONS, ETC.
- THE ENGINEER ASSUMES NO RESPONSIBILITY FOR THE ACTUAL SIZE OF THE FIELD EXCAVATIONS MADE FOR THE INSTALLATION OF UNDERGROUND STRUCTURES, AND AS SUCH, THE ACTUAL QUANTITIES OF EARTHWORK FROM SUCH ITEMS MAY VARY FROM THE ESTIMATE SHOWN ABOVE.
- THE ENGINEER ASSUMES NO RESPONSIBILITY FOR COSTS INCURRED DUE TO REMOVAL UNSUITABLE MATERIAL WHICH MUST BE REMOVED FROM SITE.

STORM SEWER NOTES:

- 1.) ALL TRENCHES UNDER AREAS TO BE PAVED AND UNDER EXISTING PAVING SHALL BE GRANULARLY FILLED WITH 3/4" MINUS CRUSHED LIMESTONE ONLY. BACKFILL SHALL BE PLACED IN ACCORDANCE WITH THE CITY OF O'FALLON
- 2.) ALL REINFORCED CONCRETE PIPE SHALL BE CLASS III PIPES
- 3.) CONTRACTOR TO START LAYING PIPE AT DOWNSTREAM MANHOLE AND WORK UPSTREAM.

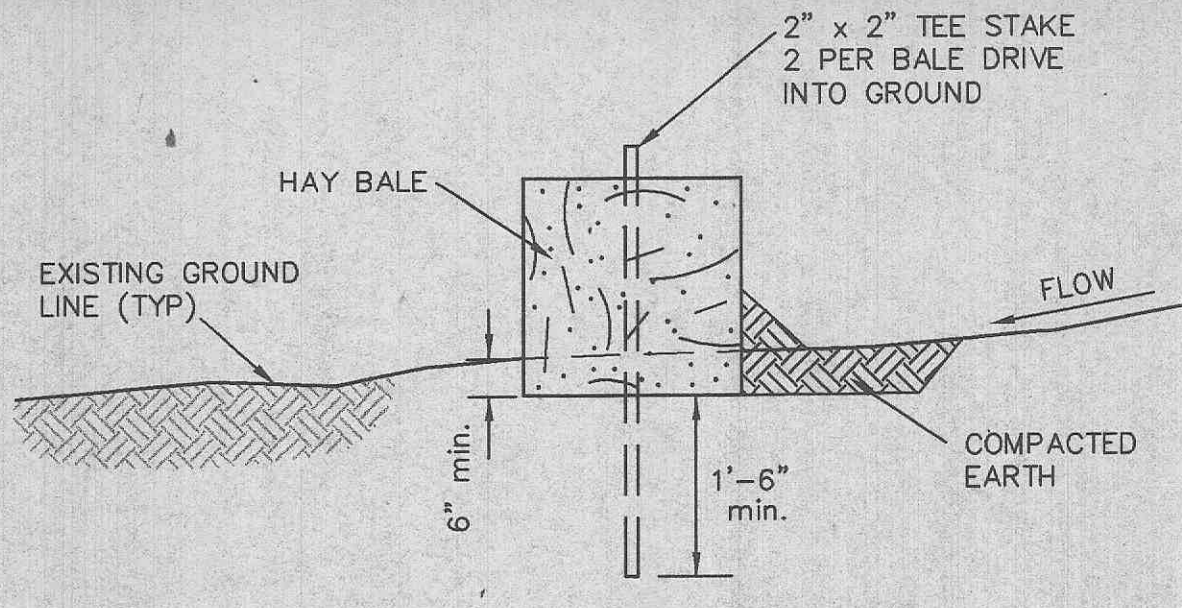


STRAW BALE BARRIER DETAIL

SILTATION CONTROL SILTFENCE DETAIL

SILTATION MAINTENANCE NOTES:

- 1.) EROSION AND SILTATION CONTROL SHALL BE INSTALLED PRIOR TO ANY GRADING AND BE MAINTAINED THROUGHOUT THE PROJECT UNTIL ACCEPTANCE OF THE WORK BY THE OWNER AND/OR CONTROLLING REGULATORY AGENCY AND ADEQUATE VEGETATIVE GROWTH INSURES NO FURTHER EROSION OF THE SOIL.
- 2.) ADDITIONAL SILTATION CONTROL MAY BE REQUIRED AS DEEMED NECESSARY BY THE CITY OF CHESTERFIELD.
- 3.) NO SLOPES SHALL BE GRADED STEEPER THAN 3:1 (HORIZONTAL : VERTICAL).
- 4.) PARKING ON NON-SURFACED AREAS IS PROHIBITED IN ORDER TO ELIMINATE THE CONDITION WHEREBY MUD FROM CONSTRUCTION AND EMPLOYEE VEHICLES IS TRACKED ONTO PAVEMENT CAUSING HAZARDOUS ROADWAY AND DRIVING CONDITIONS. CONTRACTOR SHALL KEEP ROAD CLEAR OF MUD AND DEBRIS.
- 5.) STORM WATER PIPES, OUTLETS AND CHANNELS SHALL BE PROTECTED BY SILT BARRIERS AND KEPT FREE OF WASTE AND SILT AT ALL TIMES PRIOR TO FINAL SURFACE STABILIZATION AND/OR PAVING.
- 6.) SILTATION FENCES SHALL BE INSPECTED PERIODICALLY FOR DAMAGE AND FOR THE AMOUNT OF SEDIMENT WHICH HAS ACCUMULATED. REMOVAL OF SEDIMENT WILL BE REQUIRED WHEN IT REACHES 1/2 THE HEIGHT OF THE SILTATION FENCE.
- 7.) STRAW BALES SHALL BE INSPECTED PERIODICALLY FOR DETERIORATION. BALES WHICH HAVE ROTTEN OR FAILED SHALL BE REPLACED. REMOVAL OF SEDIMENT WILL BE REQUIRED WHEN IT REACHES 1/2 THE HEIGHT OF THE BALES.
- 8.) IF CUT AND FILL OPERATIONS OCCUR DURING A SEASON NOT FAVORABLE FOR IMMEDIATE ESTABLISHMENT OF A PERMANENT GROUND COVER, A FAST GERMINATING ANNUAL SUCH AS RYE GRASSES OR SUDAN GRASSES SHALL BE UTILIZED TO RETARD EROSION. IF ADEQUATE STORMWATER DETENTION AND EROSION CONTROL DEVICES HAVE NOT BEEN ESTABLISHED.



SILTATION CONTROL HAY BALE DETAIL

J. R. GRIMES CONSULTING ENGINEERS, INC.
1132 SOUTH TOWNE SQUARE DRIVE
ST. LOUIS, MO. 63125
PH. (314) 842-8822
FAX (314) 842-8822
E-MAIL: JRG@grimesinc.com

Mackey Mitchell Associates
Architecture
Planning
Interiors
800 St. Louis Union Station 314 421 1815
Suite 200 St. Louis, Missouri 63103-2257
Fax 314 421 5206

YMCA of Greater St. Louis
OFALLON YMCA
3451 Pheasant Meadows Drive
O'Fallon, Missouri 63366



NO.	DATE	REVISIONS

DRAWN BY: D.M. CHECKED BY: J.R.G.
JOB NO. 333 DATE: 07-01-99
SHEET NO.