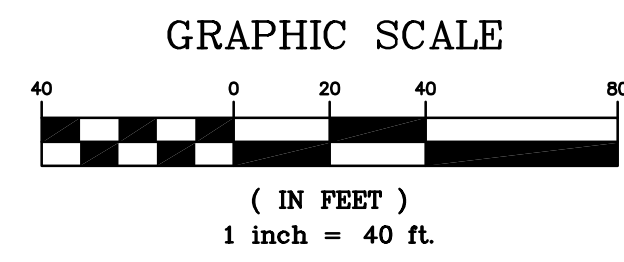
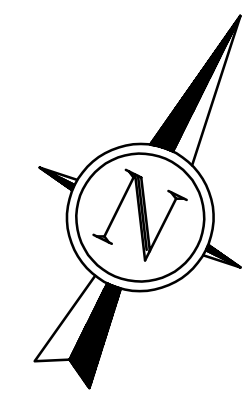
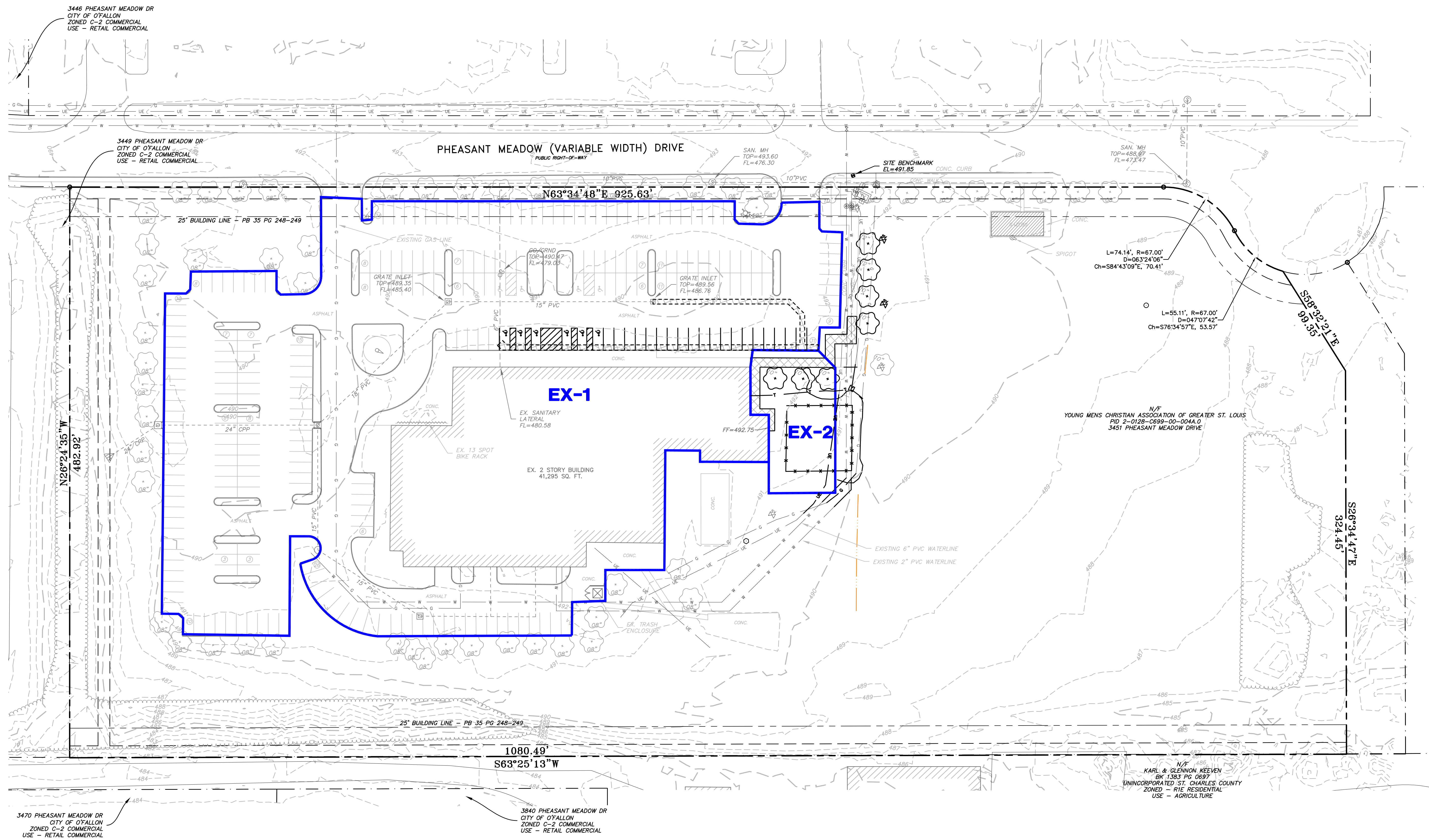


15 YEAR STORM EXISTING										
STRUCTURE NUMBER	GRASS AREA (ACRES)	P.I. FACTOR	GRAVEL AREA	P.I. FACTOR	PAVT. AREA (ACRES)	P.I. FACTOR	DISCONNECTED ROOF AREA	P.I. FACTOR	TOTAL AREA	TOTAL Q (CFS)
EX-1	0.10	1.70	0.00	3.15	2.75	3.54	0.95	4.20	3.80	13.90
EX-2	0.15	1.70	0.00	3.15	0.02	3.54	0.00	4.20	0.17	0.33



LEGEND	
EXISTING FEATURES	
FEATURES TO BE REMOVED	
PROPERTY LINES	
REMOVE CONCRETE SIDEWALK	



NO.	DESCRIPTION	DATE
△	CITY COMMENTS	11-30-2023
△	CITY COMMENTS	12-20-2023
△		
△		
△		
△		

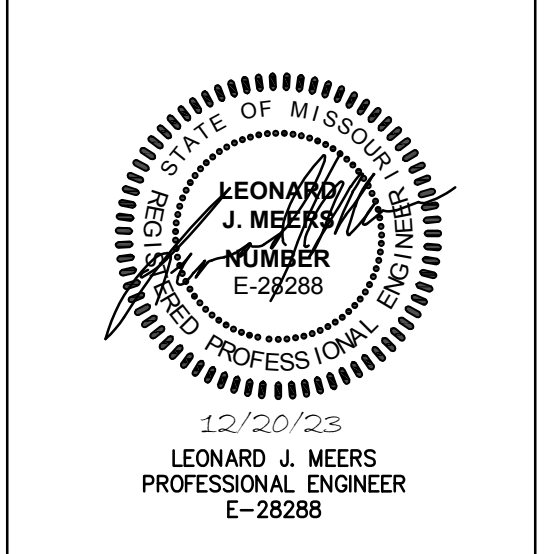
**PROJECT TITLE**  
O'FALLON YMCA

**3451 PHEASANT MEADOW DRIVE**  
O'FALLON, MO 63368

**GRIMES CONSULTING, INC.**  
Civil Engineering & Surveying Services

12300 OLD TESSON ROAD  
SUITE 3000  
ST. LOUIS, MO 63108  
PH: (314) 849-6100  
FAX: (314) 849-6010  
www.grimesconsulting.com

LEONARD J. MEERS  
PROFESSIONAL ENGINEER  
E-28288



**Developer / Owner Information**

527 ARCHITECTS, P.C.  
CONTACT: STEVE HUNSICKER  
131 W. ARGONNE, ST. LOUIS, MO 63122  
Email: steve@527architects.com

**EXISTING DRAINAGE AREA MAP**

P+Z No.  
Approval Date:

City No.

Page No.  
**C9.0**

PREPARED FOR:  
**527 ARCHITECTS, P.C.**  
CONTACT: STEVE HUNSICKER  
131 W. ARGONNE  
ST. LOUIS, MO 63122  
E: steve@527architects.com