

PARKING CALCULATIONS

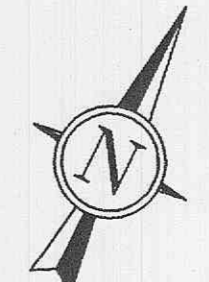
YMCA SQUARE FOOTAGE 53,848 S.F.
 REQUIREMENT: 5 SPACES PER 1000 S.F.
 REQUIRED PARKING 269
 PROPOSED PARKING 278

LOADING STALLS
 1 SPACE FOR 5,000 S.F. OF BUILDING
 1 SPACE FOR EACH ADDITIONAL 20,000 S.F. OF BUILDING

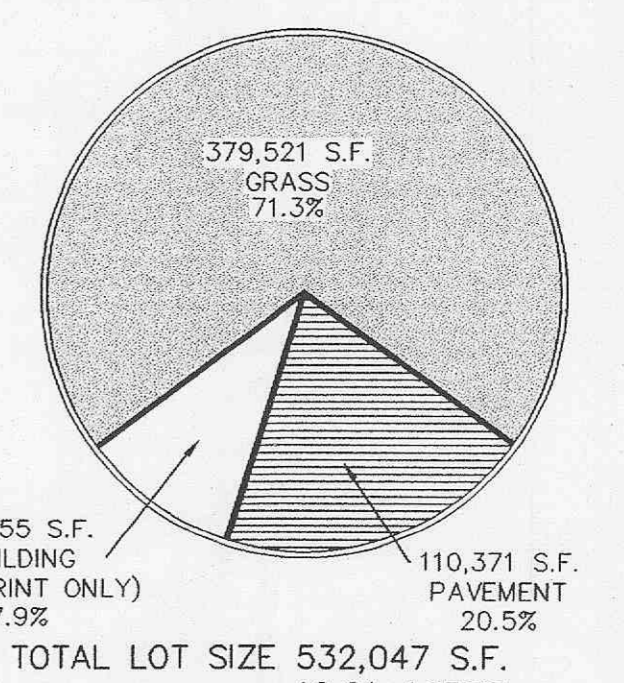
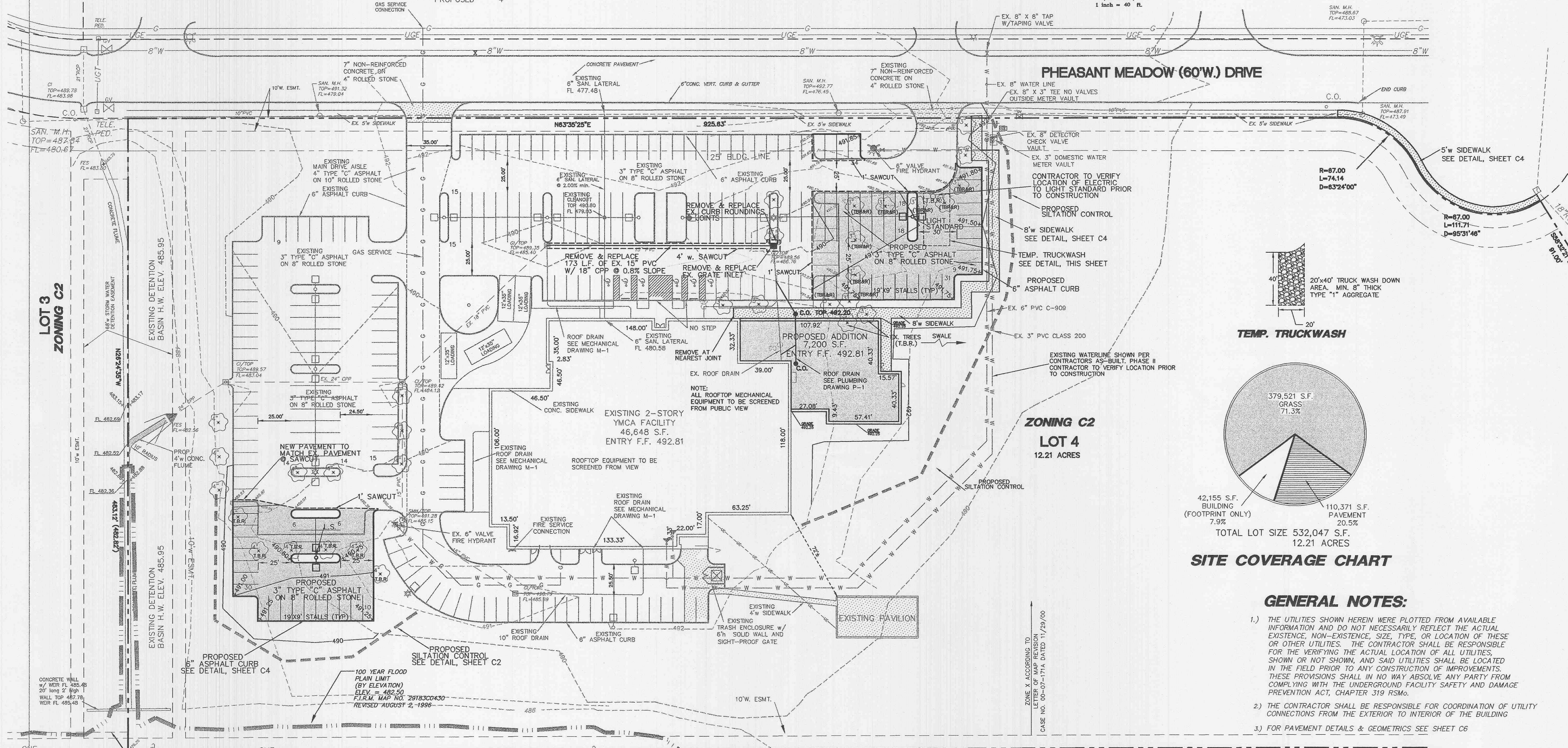
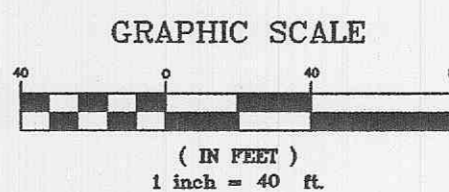
REQUIRED 4
 PROPOSED 4

ZONING C2

LOT 1



BASS OF BEARING IS
PHEASANT POINT SUBDIVISION



SITE COVERAGE CHART

GENERAL NOTES:

- 1.) THE UTILITIES SHOWN HEREIN WERE PLOTTED FROM AVAILABLE INFORMATION AND DO NOT NECESSARILY REFLECT THE ACTUAL EXISTENCE, NON-EXISTENCE, SIZE, TYPE, OR LOCATION OF THESE OR OTHER UTILITIES. THE CONTRACTOR SHALL BE RESPONSIBLE FOR THE VERIFYING THE ACTUAL LOCATION OF ALL UTILITIES, SHOWN OR NOT SHOWN, AND SAID UTILITIES SHALL BE LOCATED IN THE FIELD PRIOR TO ANY CONSTRUCTION OF IMPROVEMENTS. THESE PROVISIONS SHALL IN NO WAY ABSOLVE ANY PARTY FROM COMPLYING WITH THE UNDERGROUND FACILITY SAFETY AND DAMAGE PREVENTION ACT, CHAPTER 319 RSMo.
- 2.) THE CONTRACTOR SHALL BE RESPONSIBLE FOR COORDINATION OF UTILITY CONNECTIONS FROM THE EXTERIOR TO INTERIOR OF THE BUILDING
- 3.) FOR PAVEMENT DETAILS & GEOMETRICS SEE SHEET C6

**LOT 3
ZONING C2**

**ZONING C2
LOT 4
12.21 ACRES**

ZONING C2

UTILITIES

PHONE
GTE
680 PARR ROAD BLDG AA
WENTZVILLE, MO. 63385
(314) 332-7623

WATER/SEWER
WATER DISTRICT #2
100 WATER DR. P.O. BOX 967
O'FALLON, MO. 63366-0967
(314) 561-3737

ELECTRIC
AMEREN UE ST. CHARLES
2100 BLUESTONE
ST. CHARLES, MO.
800 552-7583

FIRE DISTRICT
O'FALLON FIRE PROTECTION DISTRICT
119 EAST ELM STREET
O'FALLON, MO. 63366
(314) 240-5312

GAS
ST. CHARLES GAS COMPANY
1 WESTBURY SQUARE BLDG D
ST. CHARLES, MO. 63301
(314) 946-8937

BENCH MARK

MODOT DATUM
 SQUARE IN NORTH BARRIER WALL, BRIDGE NO. A5064
 ELEVATION = 491.27

PREPARED FOR:
 Mackey Mitchell Associates
 800 St. Louis Union Station Suite 200
 St. Louis, Missouri 63103-2257
 PH 314 421 1815
 FAX 314 421 5206

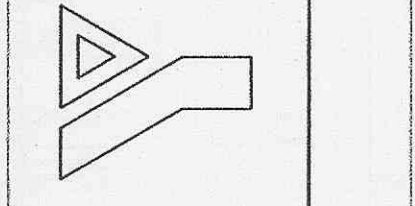
PROPERTY OWNER
YMCA of Greater St. Louis
 3451 Pheasant Meadows Drive
 O'Fallon, Missouri 63366

Alper Audi, Inc.
 Structural Engineer
 1804 Bowman Circle Drive
 St. Louis, MO 63116
 Ph (314) 422-8600 F (314) 422-8630

J.R. Grimes Consulting Engineers
 Civil Engineer
 12390 Old Tricon Road Suite 300D
 St. Louis, MO 63128
 Ph (314) 849-0100 F (314) 849-6010

Mackey Mitchell Associates
 Architects
 Planners
 Interiors
 800 St. Louis Union Station
 Suite 200
 St. Louis, Missouri
 63102-2257
 314 421 1815
 Fax 314 421 5206

YMCA of Greater St. Louis
 O'Fallon YMCA
 3451 Pheasant Meadows Drive
 O'Fallon, Missouri 63366



NO.	DATE	REVISIONS
1.	2/12/02	PER CITY
2.	3/04/02	PER CITY

DRAWN BY:	CHECKED BY:
DCM	JRG
JOB NO:	DATE:
333	01-04-02
SHEET NO.	

GRADING PLAN

C3