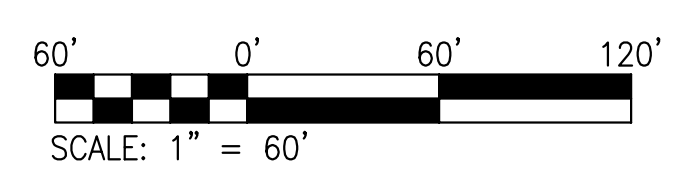
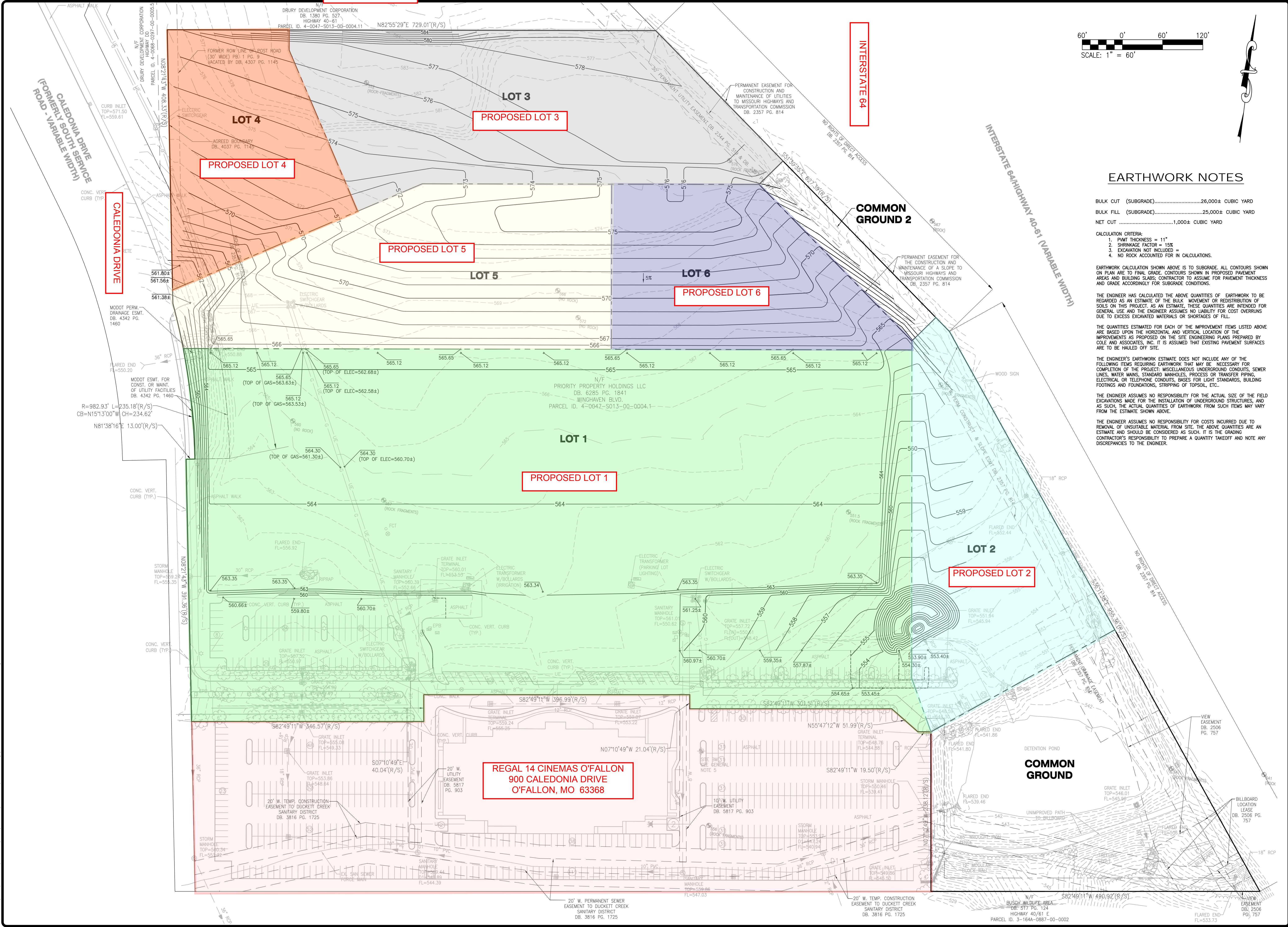


USER: Eric Morf TAB: Site
 DATE: March 31, 2017 10:55:04 PM
 DRAWING: S:\JOB\16-0042\CAD\16-0042\CAD\16-0042-1.dwg



EARTHWORK NOTES

BULK CUT (SUBGRADE).....26,000± CUBIC YARD
 BULK FILL (SUBGRADE).....25,000± CUBIC YARD
 NET CUT1,000± CUBIC YARD

CALCULATION CRITERIA:
 1. PAVT THICKNESS = 11"
 2. SHRINKAGE FACTOR = 15%
 3. EXCAVATION NOT INCLUDED =
 4. NO ROCK ACCOUNTED FOR IN CALCULATIONS.

EARTHWORK CALCULATION SHOWN ABOVE IS TO SUBGRADE. ALL CONTOURS SHOWN ON PLAN ARE TO FINAL GRADE. CONTOURS SHOWN IN PROPOSED PAVEMENT AREAS AND BUILDING SLABS; CONTRACTOR TO ASSUME FOR PAVEMENT THICKNESS AND GRADE ACCORDINGLY FOR SUBGRADE CONDITIONS.

THE ENGINEER HAS CALCULATED THE ABOVE QUANTITIES OF EARTHWORK TO BE REGARDED AS AN ESTIMATE OF THE BULK MOVEMENT OR REDISTRIBUTION OF SOILS ON THIS PROJECT. AS AN ESTIMATE, THESE QUANTITIES ARE INTENDED FOR GENERAL USE AND THE ENGINEER ASSUMES NO LIABILITY FOR COST OVERRUNS DUE TO EXCESS EXCAVATED MATERIALS OR SHORTAGES OF FILL.

THE QUANTITIES ESTIMATED FOR EACH OF THE IMPROVEMENT ITEMS LISTED ABOVE ARE BASED UPON THE HORIZONTAL AND VERTICAL LOCATION OF THE IMPROVEMENTS AS PROPOSED ON THE SITE ENGINEERING PLANS PREPARED BY COLE AND ASSOCIATES, INC. IT IS ASSUMED THAT EXISTING PAVEMENT SURFACES ARE TO BE HAULED OFF SITE.

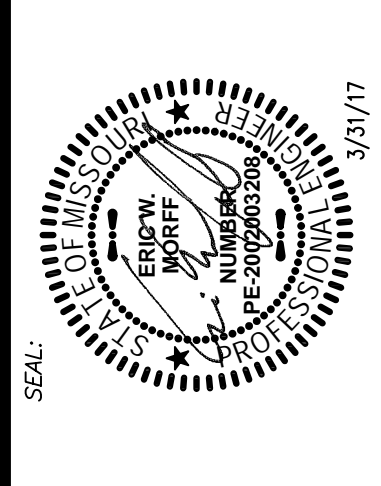
THE ENGINEER'S EARTHWORK ESTIMATE DOES NOT INCLUDE ANY OF THE FOLLOWING ITEMS REQUIRING EARTHWORK THAT MAY BE NECESSARY FOR COMPLETION OF THE PROJECT: MISCELLANEOUS UNDERGROUND CONDUITS, SEWER LINES, WATER MAINS, STANDARD MANHOLES, PROCESS OR TRANSFER PIPING, ELECTRICAL OR TELEPHONE CONDUITS, BASES FOR LIGHT STANDARDS, BUILDING FOOTINGS AND FOUNDATIONS, STRIPPING OF TOPSOIL, ETC..

THE ENGINEER ASSUMES NO RESPONSIBILITY FOR THE ACTUAL SIZE OF THE FIELD EXCAVATIONS MADE FOR THE INSTALLATION OF UNDERGROUND STRUCTURES, AND AS SUCH, THE ACTUAL QUANTITIES OF EARTHWORK FROM SUCH ITEMS MAY VARY FROM THE ESTIMATE SHOWN ABOVE.

THE ENGINEER ASSUMES NO RESPONSIBILITY FOR COSTS INCURRED DUE TO REMOVAL OF UNSUITABLE MATERIAL FROM SITE. THE ABOVE QUANTITIES ARE AN ESTIMATE AND SHOULD BE CONSIDERED AS SUCH. IT IS THE GRADING CONTRACTOR'S RESPONSIBILITY TO PREPARE A QUANTITY TAKEOFF AND NOTE ANY DISCREPANCIES TO THE ENGINEER.

NO.	REVISION DESCRIPTION	DATE

DEVELOPER/OWNER:
40 DD SPORTS, LLC
 4160 EHLMANN ROAD
 ST. PETERS, MO 63376
 636-359-0621



MISSOURI RUSH
 SOCCER COMPLEX
 MASS GRADING PLANS
 CALEDONIA DRIVE
 O'FALLON, MO 63366
MASS GRADING PLAN

+ ST. LOUIS
 115 1/2 South Street
 Suite 200
 St. Louis, MO 63103
 314.984.9887 tel
 www.colellc.com



DESIGN/CALC BY	BSJ
DRAWN BY	BSJ
CHECKED BY	EWM
DRAWING SCALE	AS SHOWN
DATE	3/31/17
Job Number	16-0042-A
Sheet Number	C4.0