

CONSTRUCTION SHALL CONFORM TO THE FOLLOWING CODES:

• THE INTERNATIONAL RESIDENTIAL CODE 2009 (IRC)

• ALL BRANCH CIRCUITS THAT SUPPLY 125 - VOLT, SINGLE PHASE, 15 - AND 20 - AMPERE OUTLETS INSTALLED IN DWELLING UNIT BEDROOMS SHALL BE PROTECTED BY AN ARC-FAULT CIRCUIT INTERRUPTER LISTED TO PROVIDE PROTECTION OF THE ENTIRE BRANCH CIRCUIT

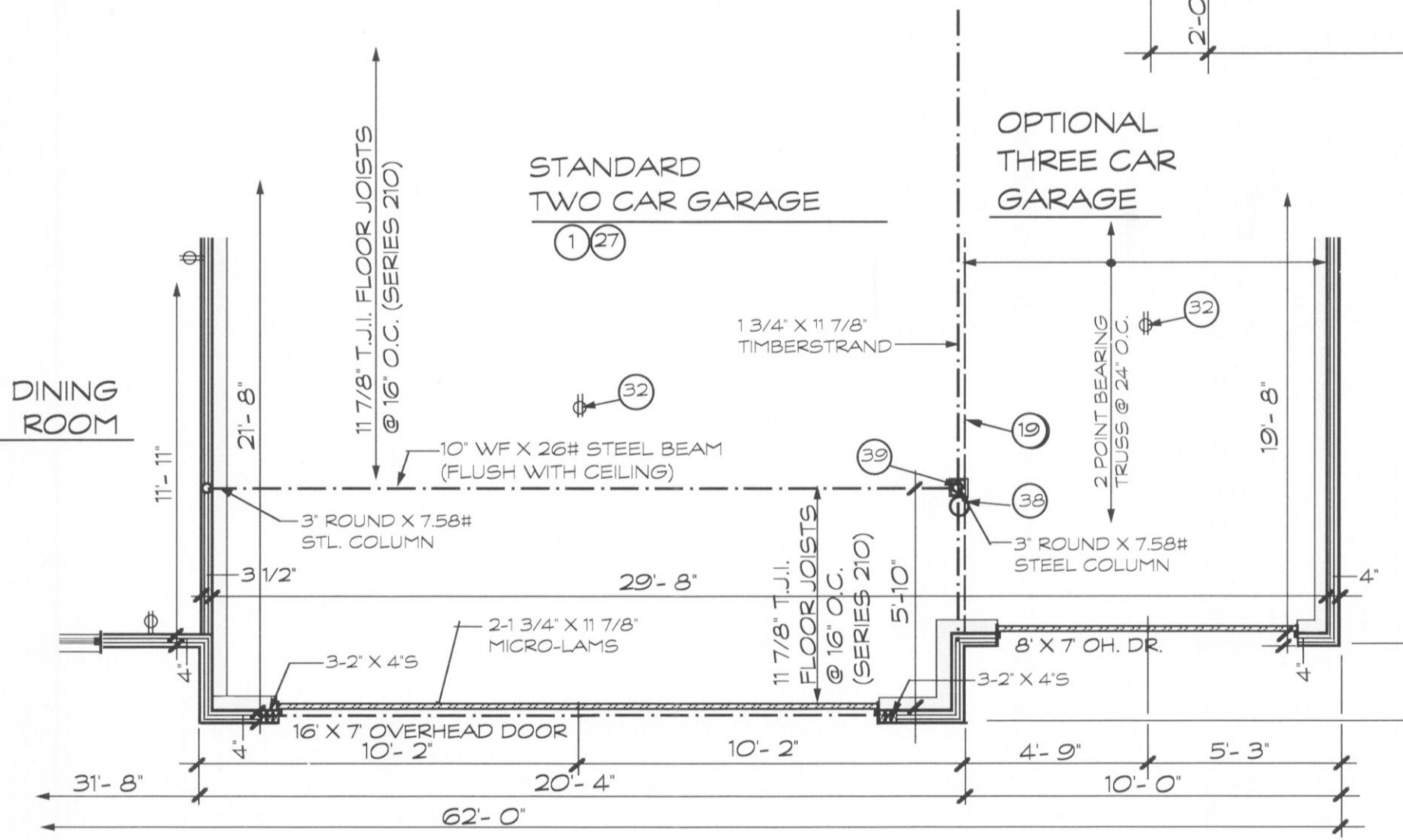
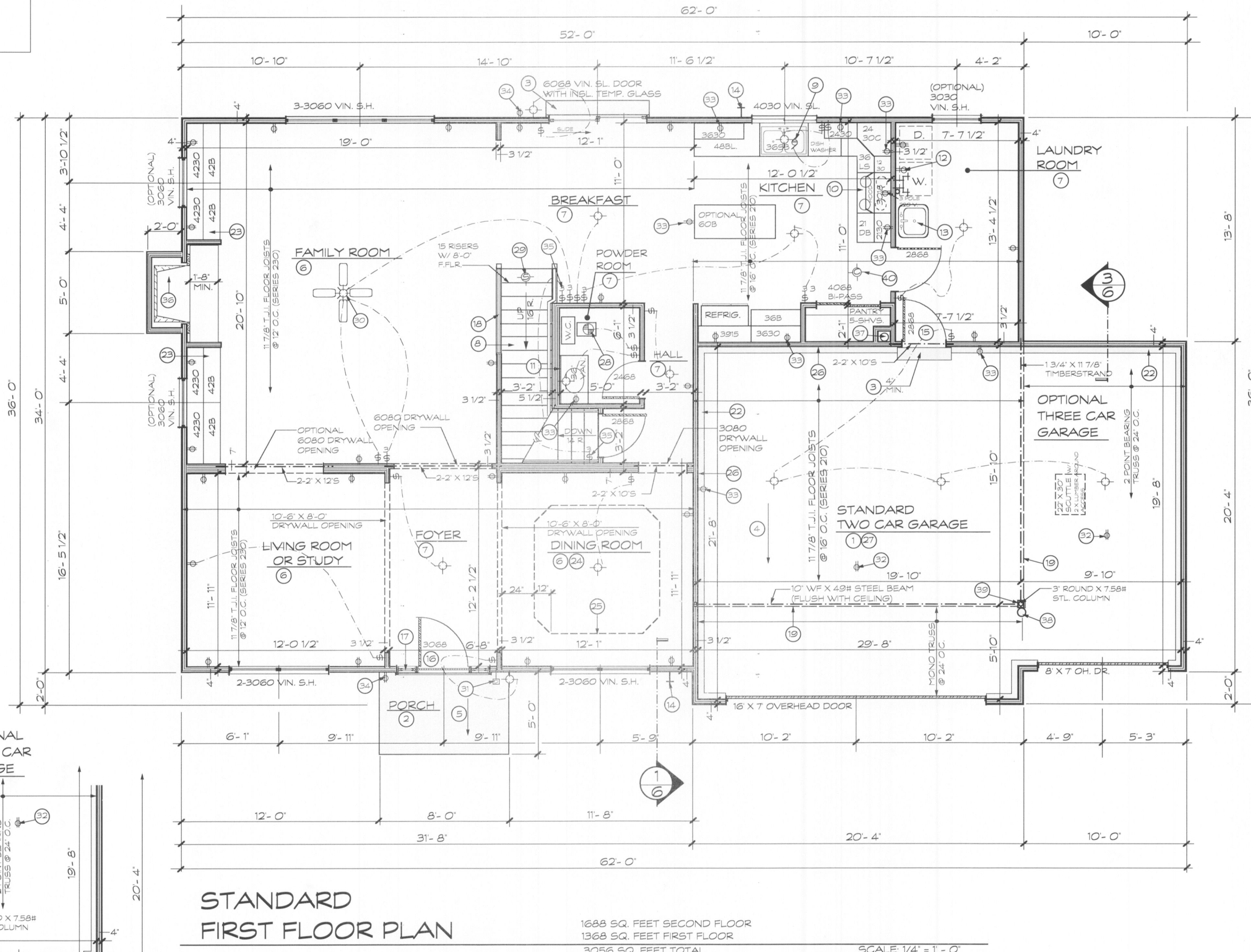
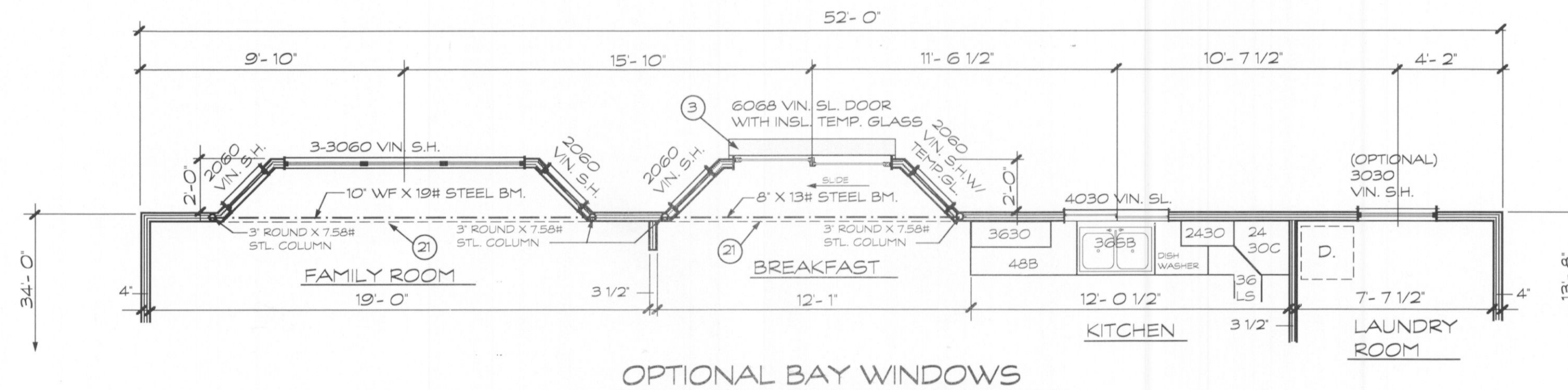
• USE GYPSUM WATER RESISTANT IN ALL WET AREAS OF BATH ROOMS (SEE GENERAL NOTES)

• RECEPTACLES INSTALLED IN KITCHEN TO SERVE COUNTERTOP SURFACES SHALL BE SUPPLIED BY NOT FEWER THAN TWO (2) SMALL APPLIANCES BRANCH CIRCUITS - SECTION 210.52(B)(3), NEC 2008

• ALL KITCHEN AND BATHROOM RECEPTACLES TO SERVE COUNTERTOP SURFACES SHALL BE GFCI - SECTION 210.9-B(4)(6), NEC 2008

NOTE:
Electrical Contractor shall provide grounding of foundation steel to meet 2008 National Electric Code

All electrical outlets unless noted otherwise should be an ARC FAULT INTERRUPTERS.



STANDARD FIRST FLOOR PLAN

1688 SQ. FEET SECOND FLOOR
1368 SQ. FEET FIRST FLOOR
3056 SQ. FEET TOTAL

SCALE: 1/4" = 1' - 0"

NOTE: (WINDOWS)
WHERE THE OPENING OF AN OPERABLE WINDOW IS LOCATED MORE THAN 72" ABOVE THE FINISHED GRADE OR SURFACE BELOW, THE LOWEST PART OF THE CLEAR OPENING OF THE WINDOW SHALL BE A MINIMUM OF 24" ABOVE THE FINISHED FLOOR OF THE ROOM IN WHICH THE WINDOW IS LOCATED.

FIRST FLOOR PLAN NOTES:

CONCRETE FLATWORK:

- 1 4" CONCRETE SLAB WITH 6" X 6" #10/10 WELDED WIRE FABRIC OVER 4" CRUSHED ROCK OVER COMPACTED FILL
- 2 4" CONCRETE SLAB OVER COMPACTED FILL
- 3 CONCRETE STEP
- 4 SLOPE GARAGE FLOOR MIN. 1/8" PER 1'-0" TO GARAGE DOOR
- 5 SLOPE PORCH FLOOR 1/4" TO 12"

FINISHED FLOORS:

- 6 CARPET FLOOR
- 7 VINYL YARD GOODS FLOOR
- 8 CARPET ENTIRE TREAD

KITCHEN & CABINETS CALL-OUTS:

- 9 DISPOSAL
- 10 30" SLIDE-IN COOK UNIT WITH HOOD ABOVE (VENT HOOD TO EXTERIOR) MIN. 100 C.F.M.

BATHROOM & PLUMBING CALL-OUTS:

- 11 1/4" PLATE MIRROR
- 12 PROVIDE LAUNDRY 'SPACE SAVER' HOT & COLD WATER.
- 13 2" ROUND LAUNDRY DRAIN; 120 V. & 220 V. ELECTRIC SERVICE FOR DRYER (VENT DRYER TO EXTERIOR)
- 14 OPTIONAL 1-PIECE FIBERGLASS LAUNDRY SINK
- 15 NO FREEZE HOSE BIBB

MILLWORK & SPECIAL CARPENTER WORK:

- 16 2868 6 PANEL INSULATED STEEL 20 MINUTE FIRE DOOR
- 17 3068 INSULATED STEEL DOOR
- 18 14" X 80" SIDELIGHTS WITH TEMPERED INSULATED GLASS
- 19 WOOD HANDRAIL (MIN. 36" HIGH & MAX. 4" BETWEEN SPINDLES)
- 20 OUTLINE OF SECOND FLOOR
- 21 DELETED NOTE
- 22 DROP SOFFIT
- 23 OUTLINE OF CONCRETE FOUNDATION
- 24 OPTIONAL CABINETS
- 25 OPTIONAL SCULPTURED CEILING @ OPTIONAL 9'-0" CEILING ONLY
- 26 OUTLINE OF OPTIONAL SCULPTURED CEILING

SPECIAL WALL CEILING FINISHES:

- 27 2" X 4" FULLY INSULATED (R-13) STUD WALL WITH 5/8" TYPE 'X' DRYWALL ON BOTH SIDES TO FINISHED CEILING
- 28 CEILING - 5/8" TYPE 'X' DRYWALL

ELECTRICAL WORK:

- 29 EXHAUST FAN MIN. 100 C.F.M. (VENT TO EXTERIOR)
- 30 A.C. POWERED I.R.C. APPROVED SMOKE DETECTOR (INTERCONNECTED) INSTALLED AS PER NFPA 72-07 WITH BATTERY BACK UP
- 31 OPTIONAL PADDLE FAN WITH LIGHT
- 32 DOORBELL
- 33 120 V. RECEPTACLE FOR GARAGE DOOR OPENER (OPTIONAL)
- 34 120 V. RECEPTACLE (GROUND FAULT INTERRUPTER)
- 35 WATERPROOF 120 V. RECEPTACLE (GROUND FAULT INTERRUPTER)
- 36 ILLUMINATED LIGHT SWITCH

MECHANICAL & FIREPLACE CALL-OUTS:

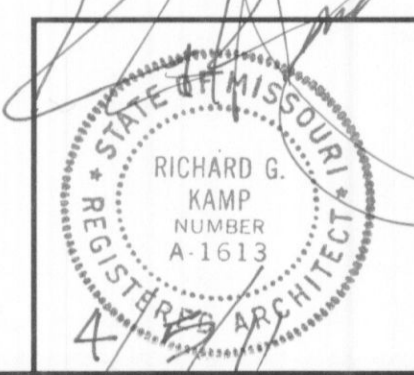
- 37 36" PRE-FAB FIREPLACE WITH MARBLE SURROUND AND COLONIAL MANTEL WITH FLUSH MARBLE HEARTH
- 38 METAL CLASS 'B' FURNACE FUEL

MISCELLANEOUS CALL-OUTS:

- 39 6" ROUND STEEL COLUMN 36" HIGH (FILL WITH CONCRETE)
- 40 ENCASE COLUMN WITH 2-LAYERS 1/2" TYPE 'X' DRYWALL
- 41 CARBON MONOXIDE DETECTOR TO COMPLY WITH UL#2034-2008

NOTE:
A. DRYWALL OPENINGS TO BE 7'-0" HIGH WITH STANDARD 8'-0" CEILINGS
B. STAIRS- 15 RISERS WITH STANDARD 8'-0" HIGH CEILINGS
C. RAISE ALL WINDOWS ON REAR WALL OF HOUSE TO HEADER HEIGHT.
D. RAISE ALL DRYWALL OPENINGS TO 8'-0" WITH 9'-0" CEILINGS.
E. RAISE WINDOWS TO 8'-0" WITH 9'-0" CEILING ON REAR WALL OF HOUSE.

REVISED DATE: 3/29/11



PROPOSED MASTER PLAN FOR:
McKELVEY HOMES, INC.
"CARLYLE"

RICHARD G. KAMP - ARCHITECT
PAUL TRENDLEY - CONSTRUCTION CONSULTANT
2568 RAYMOND DRIVE
ST. CHARLES, MO. 63301
PHONE : 636-946-7216

SHEET NO.
2
OF 10
PLAN NO.
11-5349
DATE: 1/16/02

Copyright 2002