

A TRACT OF LAND BEING PART OF
FRACTIONAL SECTION 33,
TOWNSHIP 47 NORTH, RANGE 3 EAST,
ST. CHARLES COUNTY, MISSOURI

N/F
MT ZION CEMETERY
937/1122
ZONED R-1

LOT 269

LOT 268

AUTUMN CHASE
PLAT 2
PB.31 PG.11
ZONED PUD

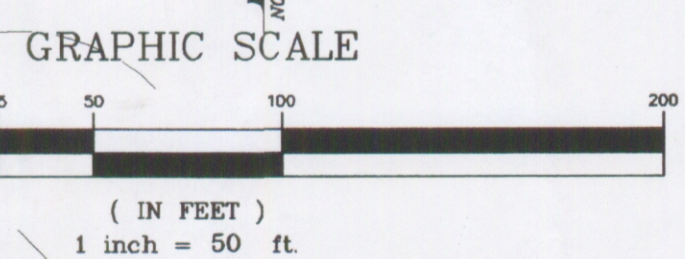
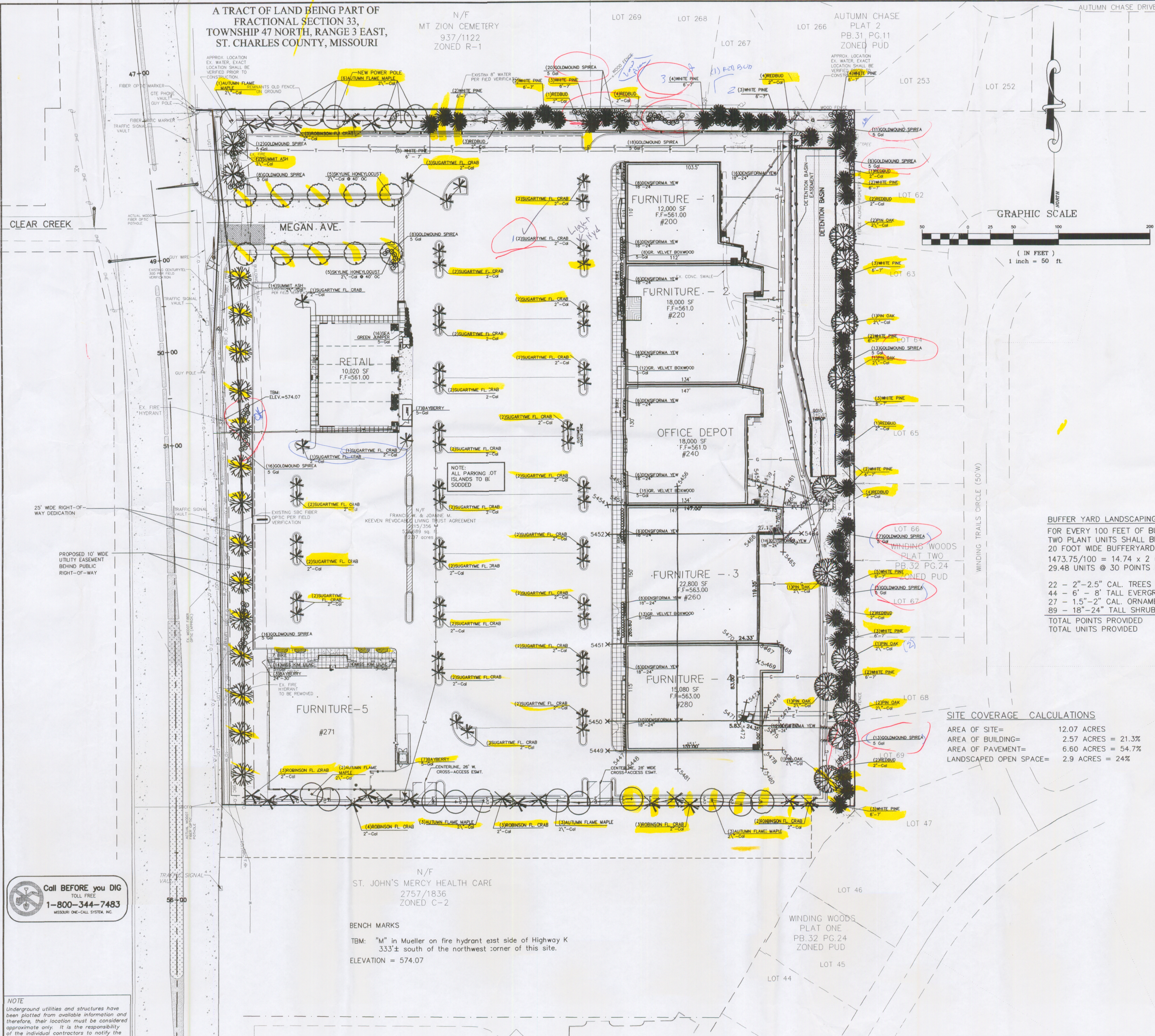
AUTUMN CHASE DRIVE (50'W)

PLANTING LIST

24	STELLA DE ORO DAYLILY Hemerocallis 'Stella de Oro'	1 Gallon
48	GREEN VELVET BOXWOOD Buxus microphylla 'Green Velvet'	5 Gallon
145	GOLDMOUND SPIREA Spiraea X japonica 'Goldmound'	5 Gallon
28	MISS KIM LILAC Syringa patula 'Miss Kim'	5 Gallon
38	SEA GREEN JUNIPER Juniperus chinensis 'Sea Green'	5 Gallon
18	CRIMSON PYGMY BARBERRY Berberis thunbergii 'Crimson Pymy'	5 Gallon
8	DWARF BURNING BUSH Euonymus alatus 'Compacta'	18"-24" B&B
110	DENSIFORMA YEW Taxus X media 'Densiformis'	18"-24" B&B
17	BAYBERRY Myrica pennsylvanica	24"-30" B&B
8	PURPLE SAND CHERRY Prunus X cistena	24"-30" B&B
46	WHITE PINE Pinus strobus	6'-7" B&B
24	REDBUD Cercis canadensis	2" Caliper
50	SUGARTIME FLOWERING CRAB Malus 'Sugartime'	2" Caliper
20	ROBINSON FLOWERING CRAB Malus 'Robinson'	2" Caliper
11	PIN OAK Quercus palustris	2.5" Caliper
16	SUMMIT ASH Fraxinus pennsylvanica 'Summit'	2.5" Caliper
10	SKYLINE HONEYLOCUST Gleditsia triacanthos 'Skyline'	2.5" Caliper
18	AUTUMN FLAME MAPLE Acer rubrum 'Autumn Flame'	2.5" Caliper

PICKETT RAY & SILVER
CIVIL ENGINEERS
PLANNERS
LAND SURVEYORS
333 Mid Rivers Mall Drive
St. Peters, MO 63376
Phone (636) 397-1211
Fax (636) 397-1104

MEGAN CROSSING
MISSOURI STATE HIGHWAY K
OF FALLON, MISSOURI
Prepared For:
G. J. GREWE, INC.
9109 WATSON ROAD
ST. LOUIS, MO 63114
(314) 962-6384



BUFFER YARD LANDSCAPING CALCULATIONS:
FOR EVERY 100 FEET OF BUFFERYARD FRONTAGE-A TOTAL OF TWO PLANT UNITS SHALL BE PROVIDED WITHIN A MINIMUM 20 FOOT WIDE BUFFERYARD AREA.
1473.75/100 = 14.74 x 2 = 29.48 UNITS REQUIRED
29.48 UNITS @ 30 POINTS EACH = 884 POINTS REQUIRED

22 - 2"-2.5" CAL. TREES @ 10 PTS. EA.	= 220 POINTS (7.33 UNITS)
44 - 6' - 8' TALL EVERGREENS @ 10 PTS. EA.	= 440 POINTS (14.67 UNITS)
27 - 1.5"-2" CAL. ORNAMENTAL TREES @ 5 PTS. EA.	= 135 POINTS (4.50 UNITS)
89 - 18"-24" TALL SHRUBS @ 1 PT. EA.	= 89 POINTS (2.97 UNITS)
TOTAL POINTS PROVIDED	= 884 POINTS
TOTAL UNITS PROVIDED	= 29.47 UNITS

SITE COVERAGE CALCULATIONS

AREA OF SITE=	12.07 ACRES
AREA OF BUILDING=	2.57 ACRES = 21.3%
AREA OF PAVEMENT=	6.60 ACRES = 54.7%
LANDSCAPED OPEN SPACE=	2.9 ACRES = 24%

Call BEFORE you DIG
TOLL FREE
1-800-344-7483
MISSOURI ONE-CALL SYSTEM, INC.

NOTE
Underground utilities and structures have been plotted from available information and therefore, their location must be considered approximate only. It is the responsibility of the individual contractors to notify the utility companies before actual construction.

REVISIONS

NO.	DATE	DESCRIPTION
01	05-05	PER CITY OF OTTAWA
02	05-05	PER DEVELOPER
03	05-05	PER CITY OF OTTAWA
04	05-05	PER DEVELOPER
05	05-05	EXISTING WATER PER FIELD LOCATION
06	05-05	PER WATER COMPANY
07	05-05	PER DEVELOPER
08	05-05	PER DEVELOPER

ENGINEERS AUTHENTICATION
The responsibility for professional engineering liability on this project is hereby limited to the set of plans authenticated by the seal, signature, and date hereunder attached. Responsibility is disclaimed for all other engineering plans involved in this project and specifically excludes revisions after this date unless reauthenticated.
PICKETT, RAY & SILVER, INC.

DRAWN D.STOSZ	DATE 12-15-04
CHECKED D.BYRD	DATE 12-15-04
PROJECT # 03043.GJGR.00C	FIELD BOOK

MEGAN CROSSING
LANDSCAPE PLAN
SHEET 13A OF 13
© Copyright 2004 by Pickett, Ray & Silver Inc.