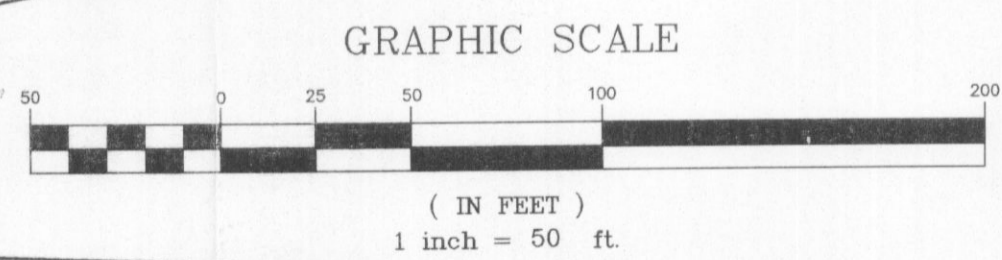
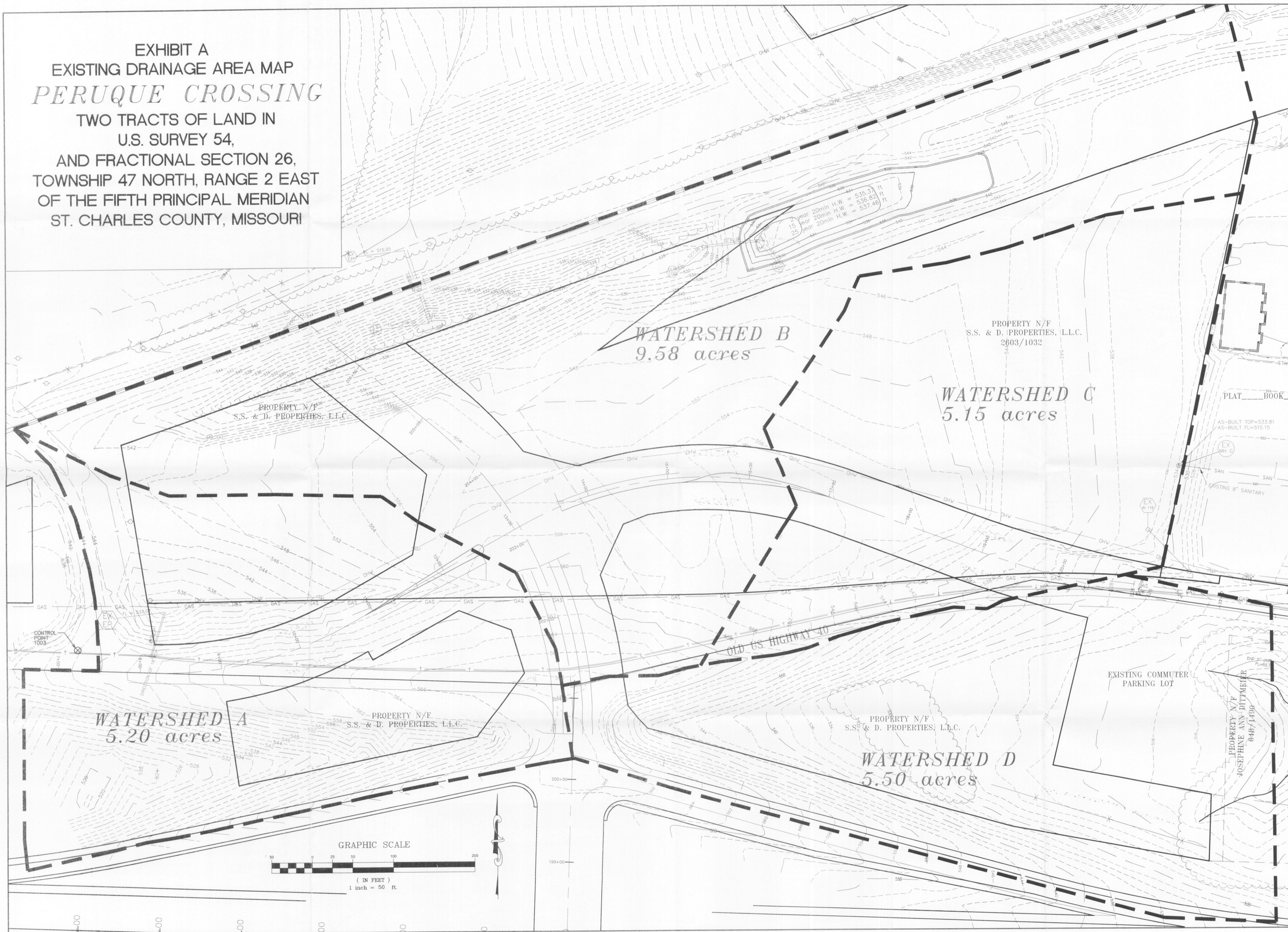


EXHIBIT A
 EXISTING DRAINAGE AREA MAP
PERUQUE CROSSING
 TWO TRACTS OF LAND IN
 U.S. SURVEY 54,
 AND FRACTIONAL SECTION 26,
 TOWNSHIP 47 NORTH, RANGE 2 EAST
 OF THE FIFTH PRINCIPAL MERIDIAN
 ST. CHARLES COUNTY, MISSOURI



PREPARED FOR: S.S.&D. PROPERTIES, L.L.C.
 501 FIRST CAPITOL DRIVE
 ST. CHARLES, MISSOURI 63301
 (636) 946-9753

DISCLAIMER OF RESPONSIBILITY
 I hereby specify that the documents intended to be authorized by my seal are limited to this sheet, and I hereby disclaim any responsibility for all other drawings, specifications, estimates, reports or other documents or instruments relating to or intended to be used for any part or parts of the architectural or engineering project or survey.

Copyright 2004
 Box Engineering Company, Inc.
 All Rights Reserved

REVISIONS
6-30-04 CITY COMMENTS

Box
 ENGINEERING
 PLANNING
 SURVEYING
 1052 South Cloverleaf Drive
 St. Peters, MO. 63376-6445
 636-928-5552
 FAX 928-1718

5-26-04
 DATE
 00-11282C
 PROJECT NUMBER
 1 OF 2
 SHEET OF
 11282CMODOT-UTILITY
 FILE NAME
 TCF
 DRAWN
 TCF RLF
 DESIGNED CHECKED