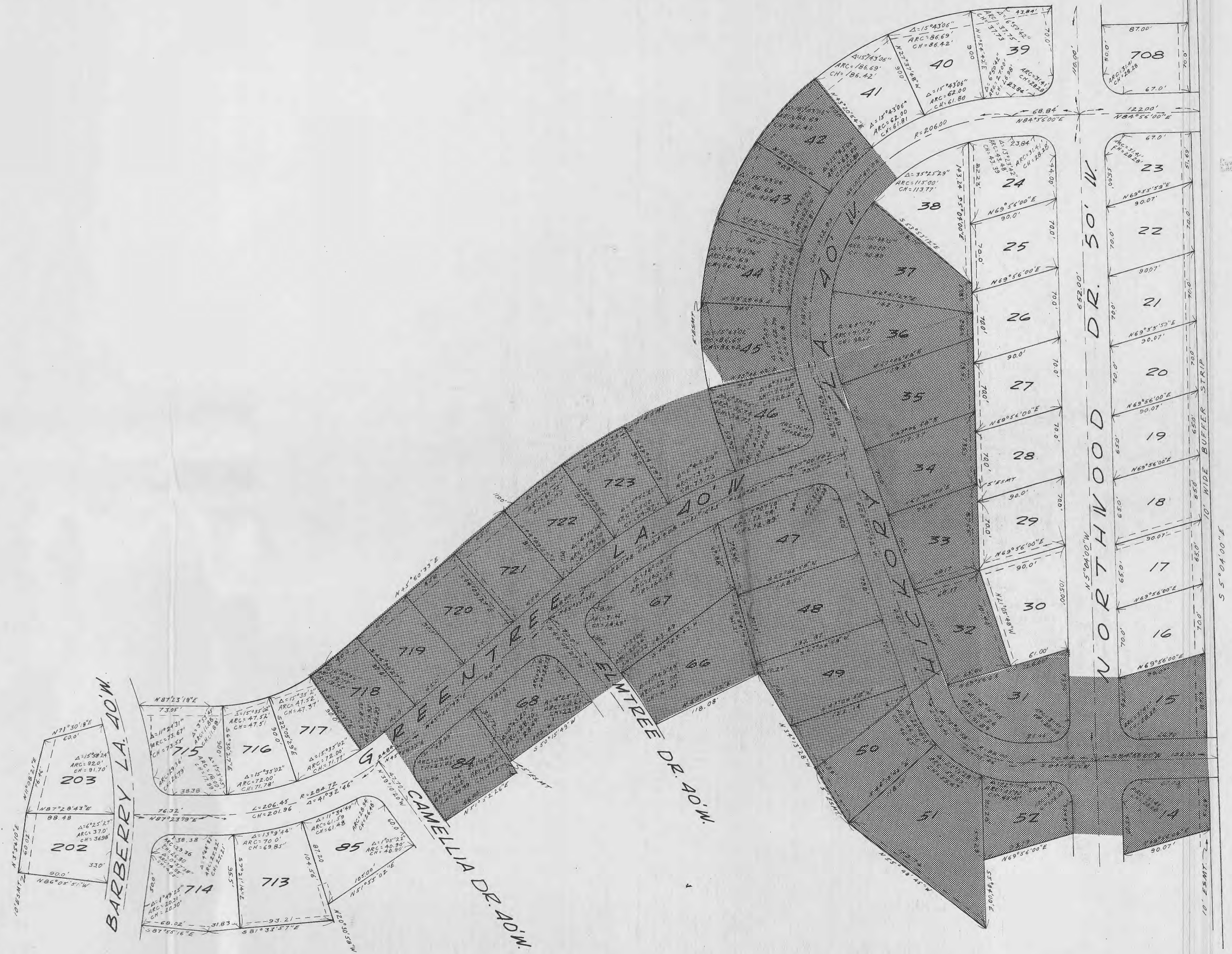
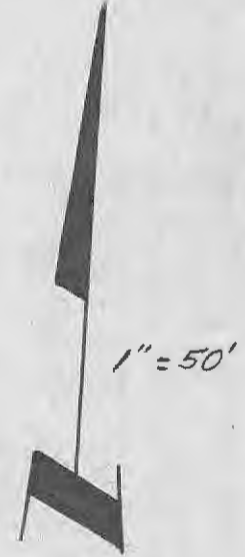


N 4° 04' 50" W
10' WIDE BUFFER STRIP

8' Area



Examined and Approved
 NOV 7 1966
Blair R. Berger
 SURVEYING ENGINEER
 LOS ANGELES COUNTY, CALIF.



This Plat was approved by the
 Los Angeles County Board of Supervisors
 on November 2, 1966
Walter H. ...
 County Clerk

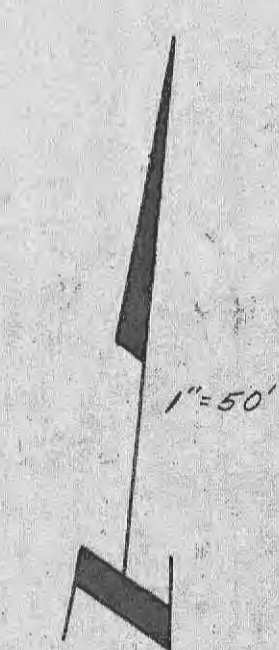
14°04'50"W 750.20
10' WIDE BUFFER STRIP

LOT 8
Recreational Area



Final Plat Approved by the State Engineer and Zoning
7/1984
Victor B. Baskin
Professional Surveyor

This Final Plat Approved by the State Engineer and Zoning
Victor B. Baskin
Professional Surveyor





Examined and Approved

1877

Handwritten signature

SE 1/4 SW 1/4 FRAC SEC 32 TWP 47N, R3E.
NE 1/4 NW 1/4 FRAC SEC. 5 TWP 46N, R3E.

OLD STONE MARKING SW CORNER OF SE 1/4 OF SW 1/4 SECTION 32

The Final Plat Approved by the
S.E. & S. Survey Platting and
County Commission, NOV 19 1960
Velo Brubaker
Secretary

1" = 50'