

ISSUE REMARKS/DATE

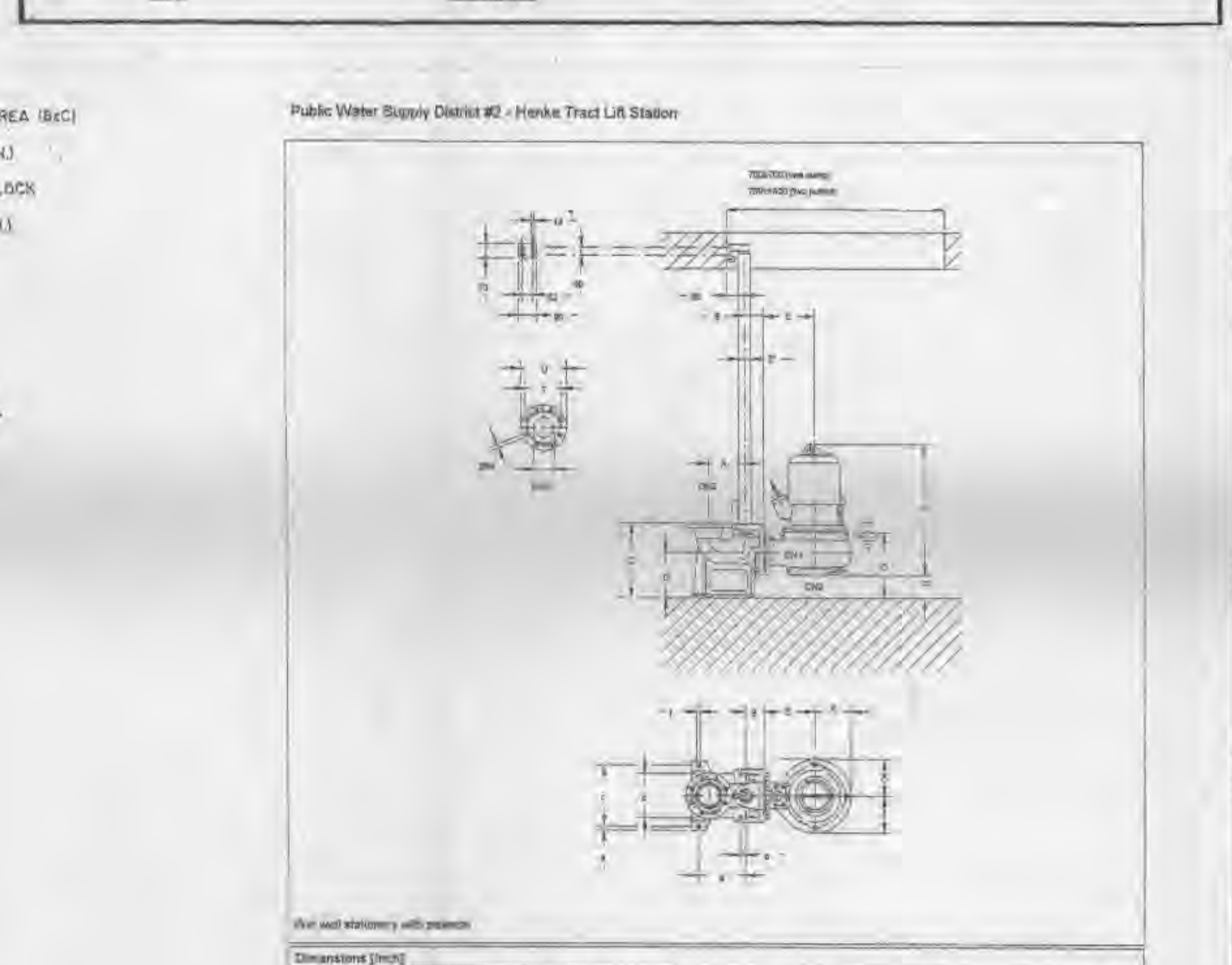
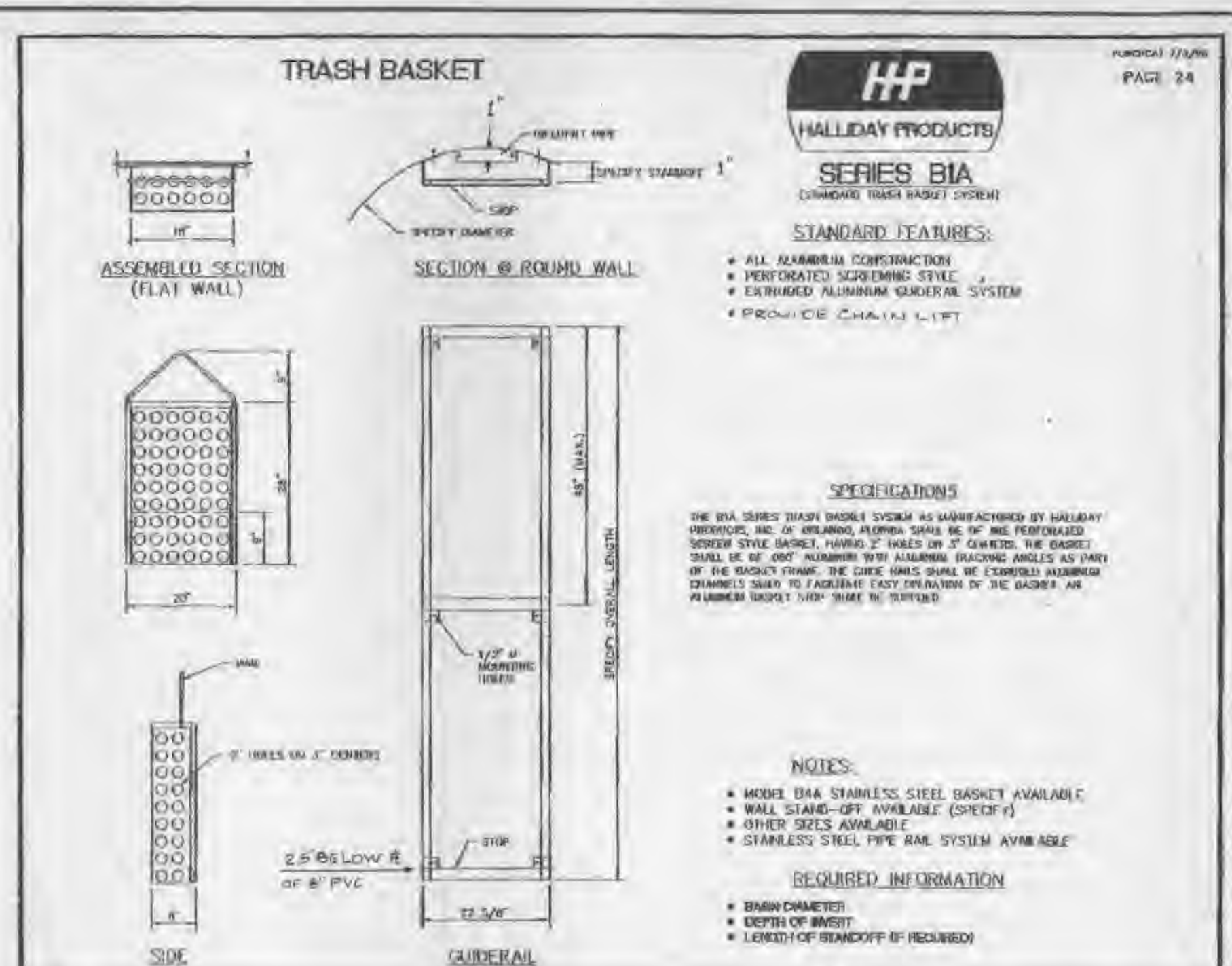
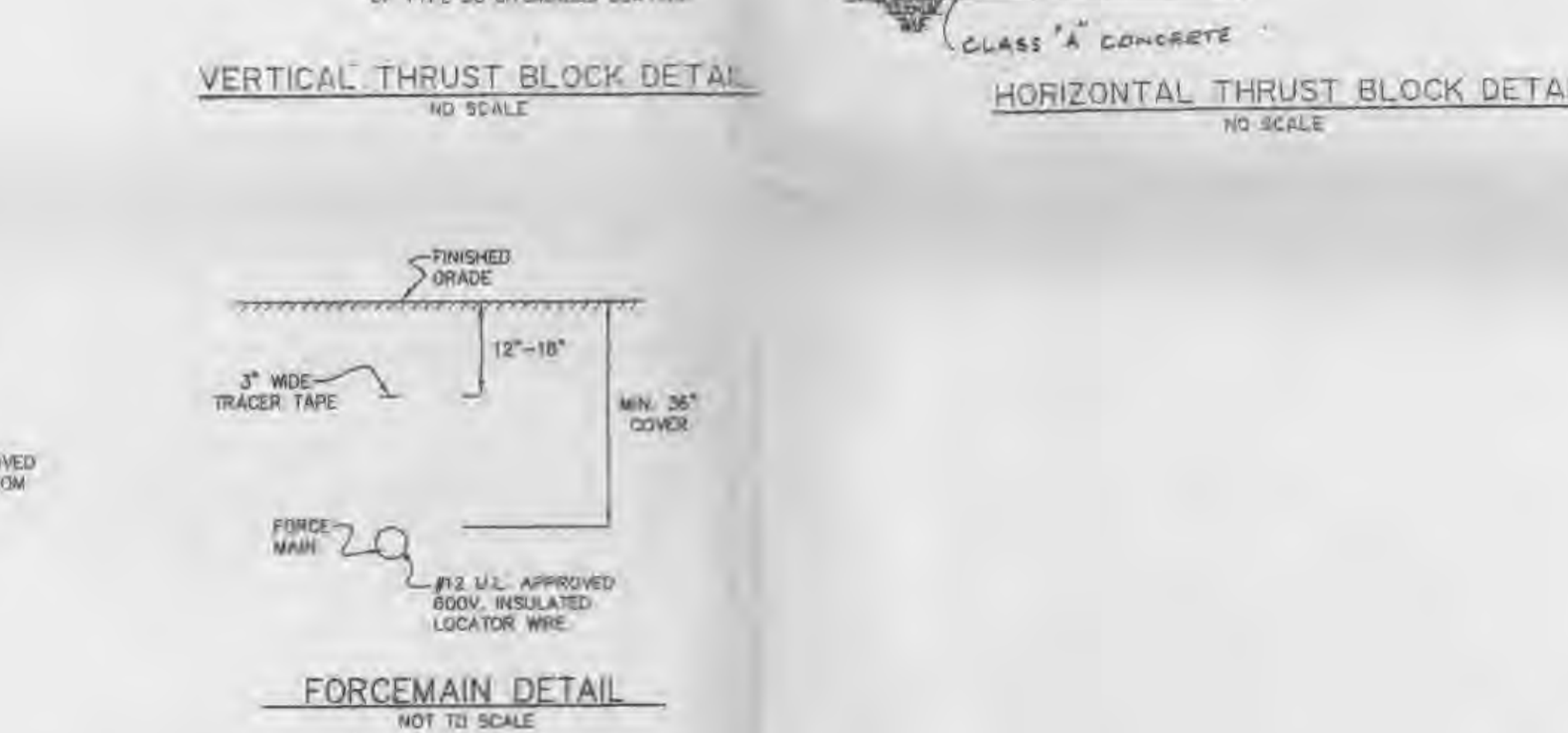
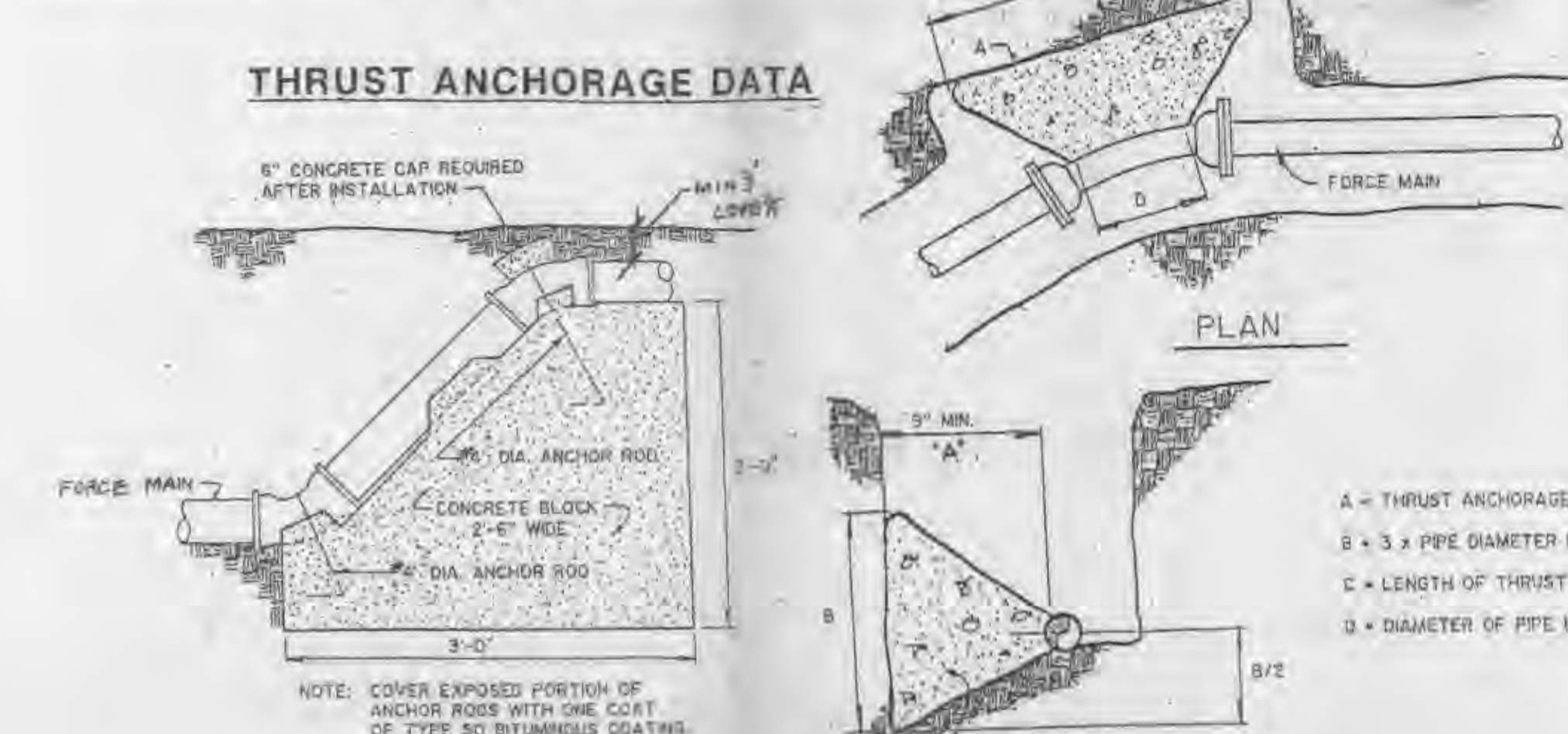
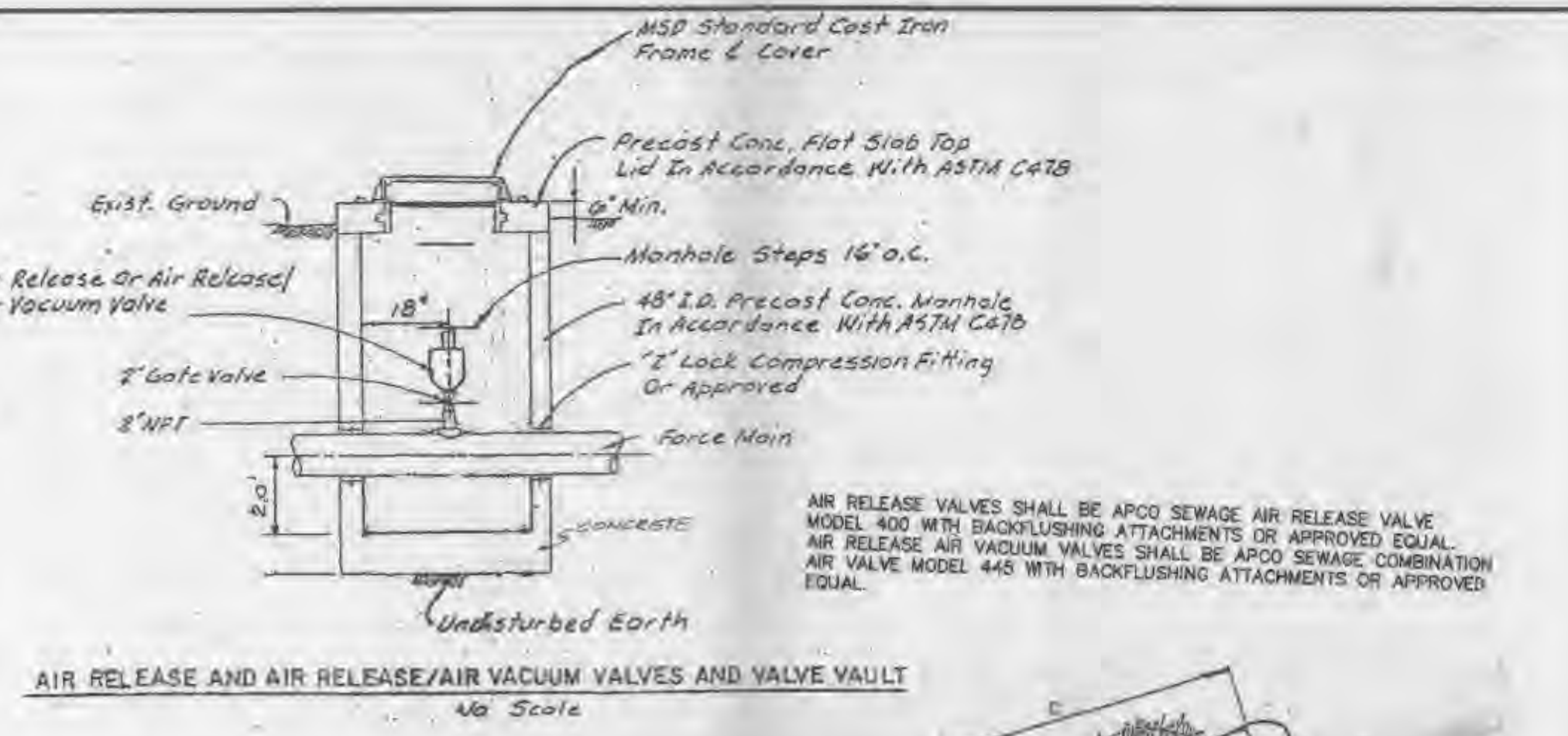
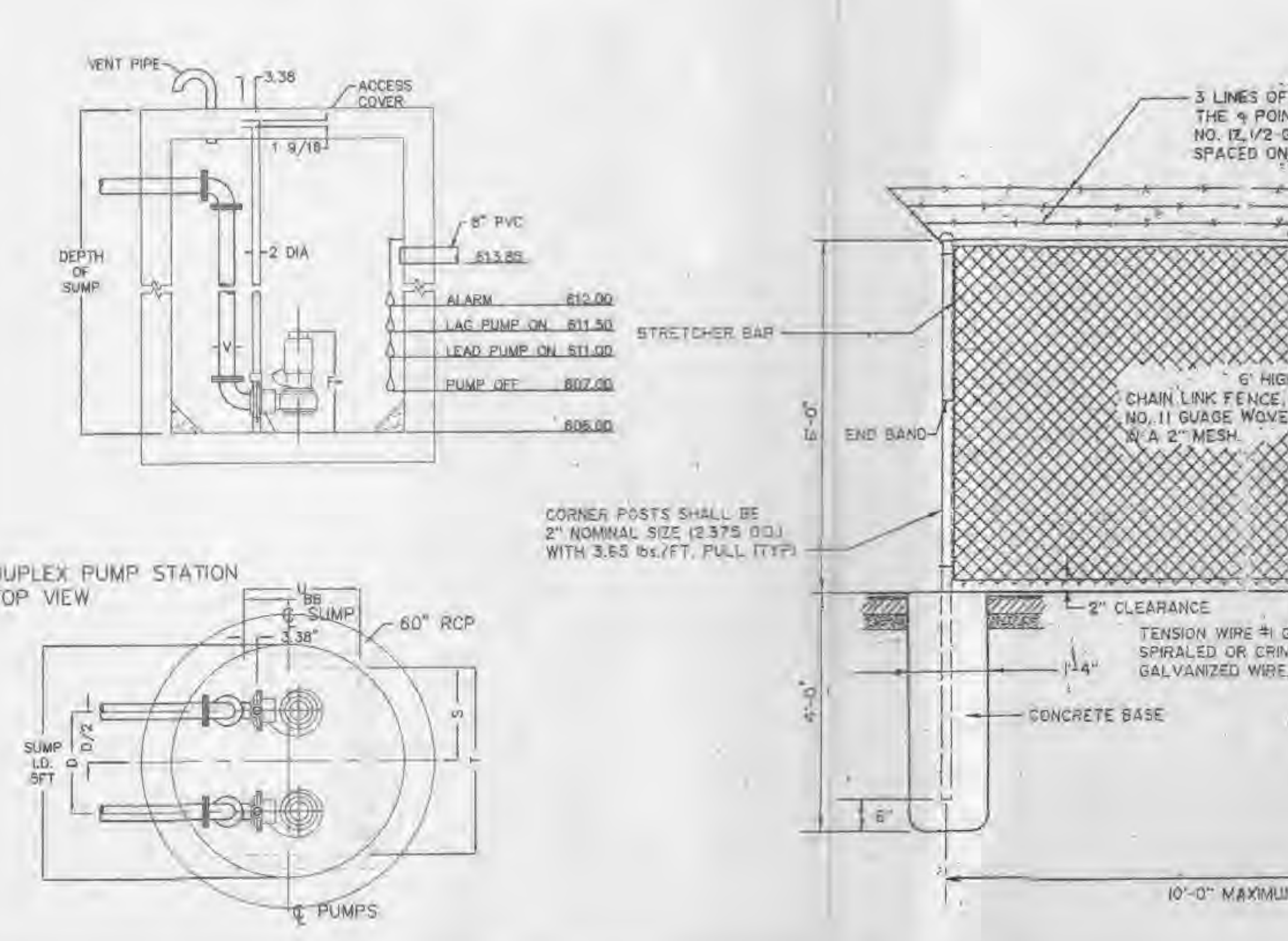
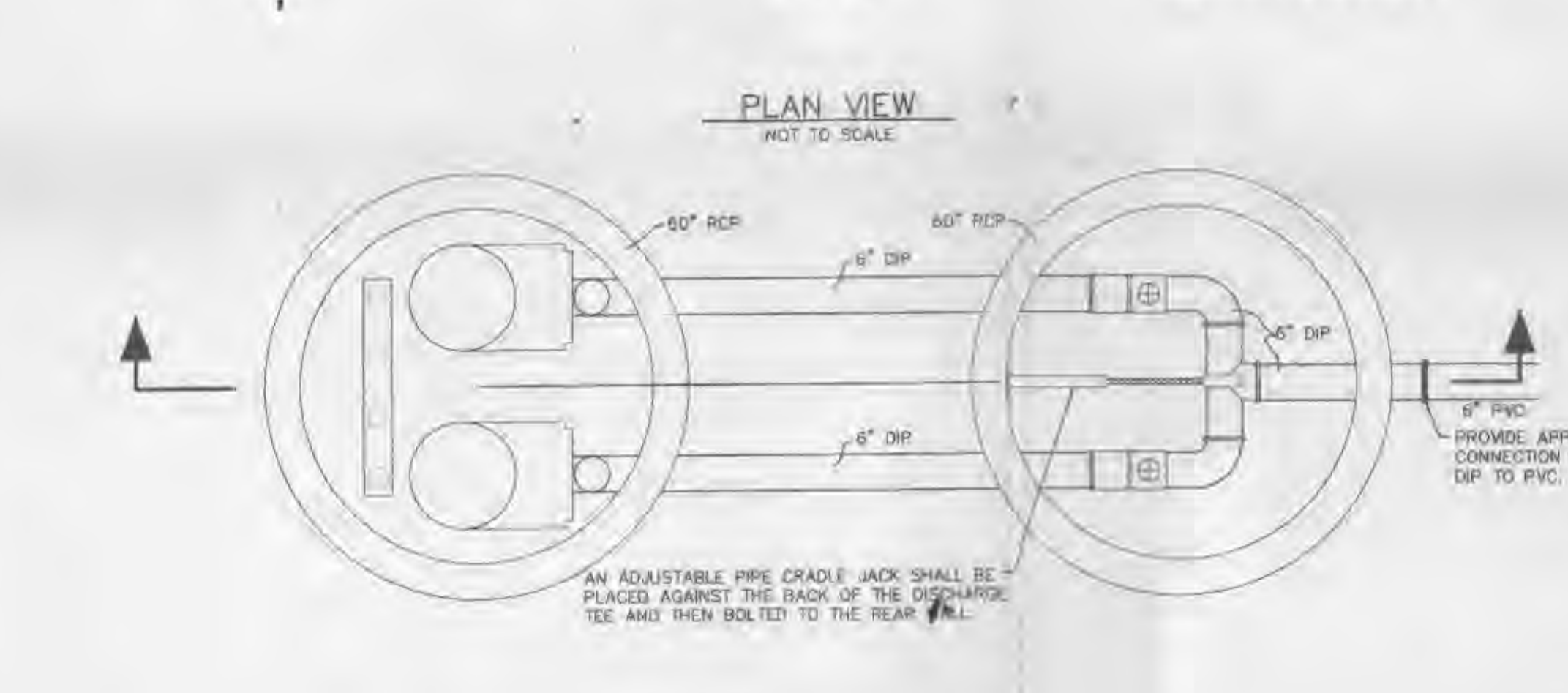
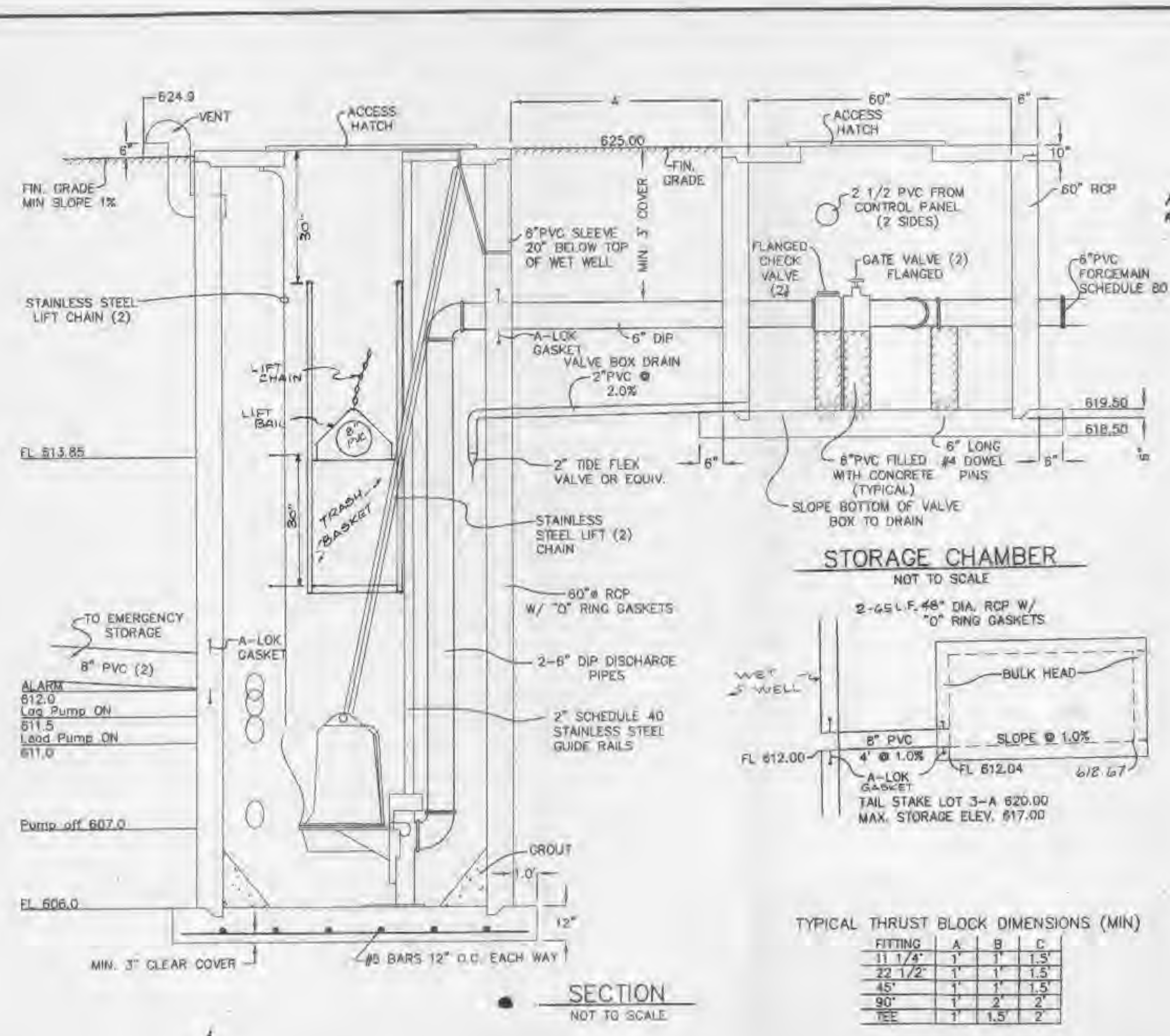
PREPARED FOR:
J.H.B. PROPERTIES, INC.
 5081 NEW BAUMGARTNER ROAD
 ST. LOUIS, MISSOURI 63129
 (314) 487-6717



PREPARED BY:
THE STERLING CO.
 ENGINEERS & SURVEYORS
 5081 NEW BAUMGARTNER ROAD
 ST. LOUIS, MISSOURI 63129
 (314) 487-0440 FAX 487-8844
 E-Mail: Sterling@icon-sll.net

PROJECT:	Village at Bainbridge	
DRAWN:	DESIGNED:	CHECKED:
SHEET TITLE: Force Main Plan and Profile		

NO.	99	08	195
M.S.D.	P#		SHEET
			2
DIGITAL FILE LOCATION:			OF
			3



TRASH BASKET

HP
HOLIDAY PRODUCTS
SERIES B1A
CORUGATED TRASH BASKET SYSTEM

STANDARD FEATURES:

- ALL ALUMINUM CONSTRUCTION
- PERFORATED STAINLESS STEEL
- EXTRUDED ALUMINUM GUIDERAIL SYSTEM
- PROMOTE CHAIN LIFT

SPECIFICATIONS

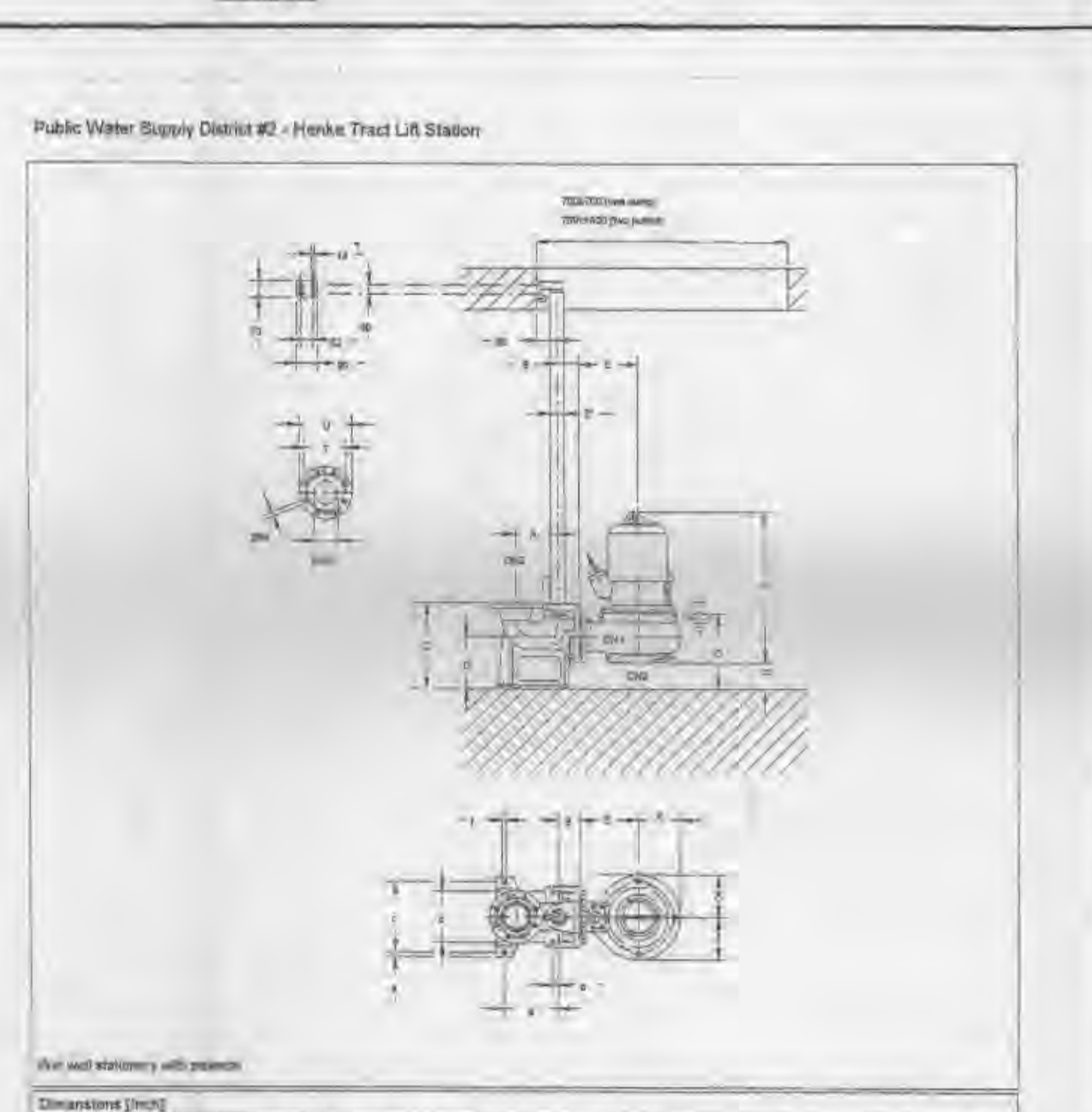
THE B1A SERIES TRASH BASKET SYSTEM IS MANUFACTURED BY HOLIDAY PRODUCTS, INC. OF HUNTSVILLE, ALABAMA. THIS IS NOT A PERFORATED STAINLESS STEEL BASKET, RATHER, IT IS MADE OF STAINLESS STEEL BASKET WITH PERFORATED ALUMINUM GUIDERAILS AS PART OF THE BASKET FRAME. THE GUIDERAILS SHOULD BE EXPOSED ALUMINUM CHANNELS SHOWN TO FACILITATE FOOT TRACTION BY THE BASKET AIR PLUMBER BASKET SHOULD BE COVERED.

NOTES:

- MODELS B1A STAINLESS STEEL BASKET AVAILABLE
- WALL STAND-OFF AVAILABLE (SPECIFY)
- OTHER SIZES AVAILABLE
- STAINLESS STEEL PIPE RAIL SYSTEM AVAILABLE

REQUIRED INFORMATION

- TRASH DIAMETER
- DEPTH OF BASKET
- LENGTH OF BASKET (IF REQUIRED)



ISSUE REMARKS DATE

PREPARED FOR: **J.M.B. Land Company, L.L.C.**
5091 NEW BAUMGARTNER ROAD
ST. LOUIS, MISSOURI 63129
(314) 487-6717

THE **STERLING** CO.
ENGINEERS & SURVEYORS
5095 NEW BAUMGARTNER ROAD
ST. LOUIS, MISSOURI 63129
(314) 487-0440 FAX 487-8944
E-Mail: Sterling@jcom-stl.net

PROJECT: **Villages at Bainbridge**

SHEET TITLE: **Lift Station Plans**

NO. **99 08 195**

M.S.D. SHEET **3**

DIGITAL FILE LOCATION: **3**

DATE: **3**

OF **3**