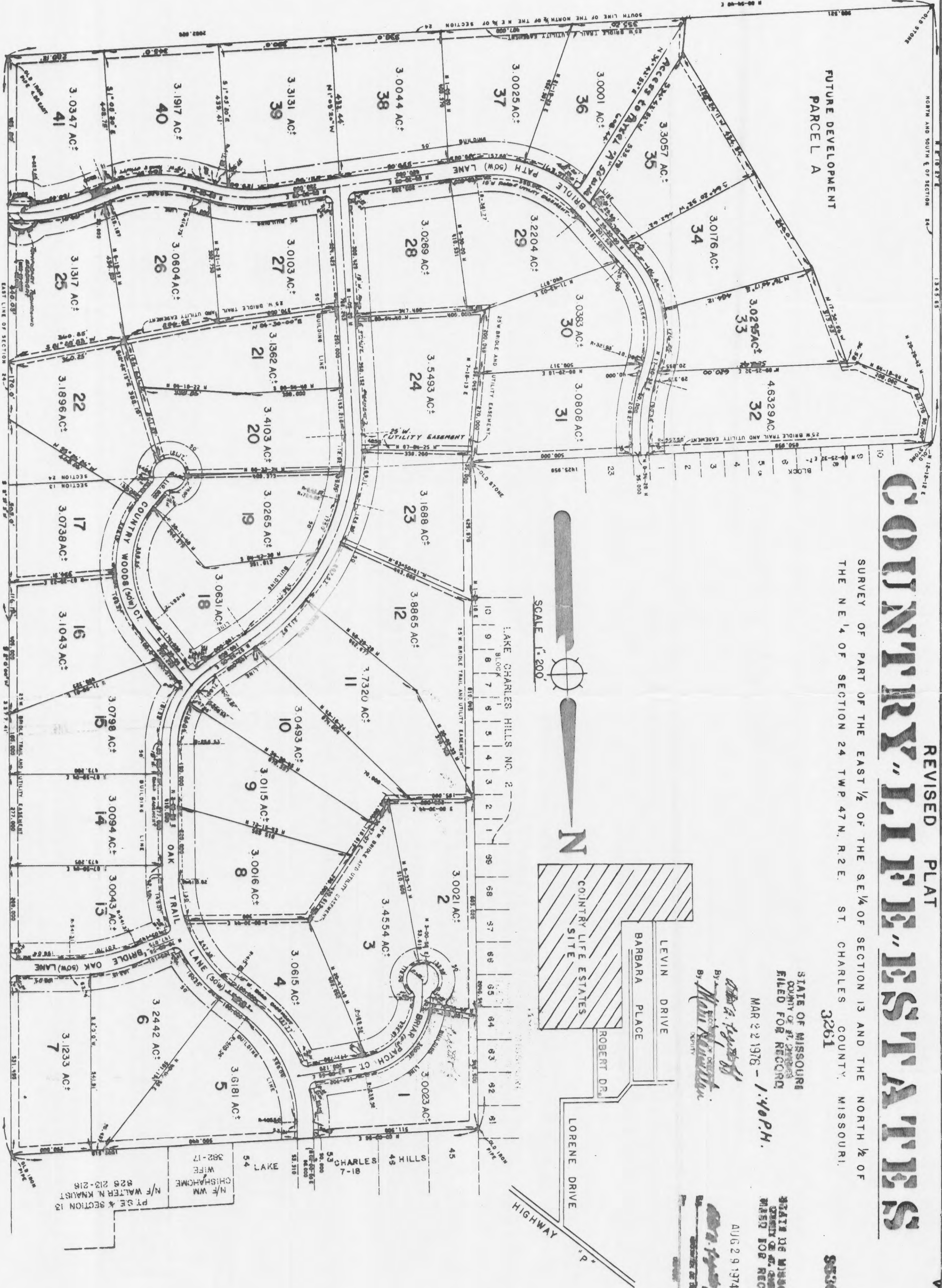


# COUNTRY LIFE ESTATES

REVISED PLAT  
 SURVEY OF PART OF THE EAST 1/2 OF THE SE 1/4 OF SECTION 13 AND THE NORTH 1/2 OF THE NE 1/4 OF SECTION 24 TWP 47 N. R 2 E. ST. CHARLES COUNTY, MISSOURI, 3261

5536



STATE OF MISSOURI  
 COUNTY OF ST. CHARLES  
 FILED FOR RECORD  
 MAR 22 1976 - 1:40 P.M.  
 BY *Neil Knaust*  
 DEPT. OF REVENUE  
 CLERK

Book 19 page 1093  
 OK 19 pg 25

ORDER NO 5739  
 JAMES ENGINEERING AND SURVEYING, INC.  
 32 A SOUTH CENTRAL  
 CLAYTON, MISSOURI  
 63105 727-4008  
 Surveyed by R. Van Boles

This is to certify that at the request of County Life Estates, Inc. we have, during the month of February, 1976, made a survey and plat of the part of the East 1/2 of Section 13 and the North 1/2 of Section 24 in St. Charles County, Missouri, and that the results of said survey are correctly represented upon this plat.



James Engineering & Surveying, Inc.  
*James L. Wurm*  
 James L. Wurm  
 No. Reg. L.S. # 402

The undersigned owner of the tract of land platted and described in the surveyor's certificate above, do hereby certify that the same has been surveyed and subdivided in the manner shown which plat shall hereafter be recorded in the public records of the County and State of Missouri, and that the same with boundary lines, are hereby dedicated to public use forever, and hereby designate the streets, together with sidewalks, and all other improvements shown hereon, as proposed, and that the same shall remain in effect until the streets are approved by the Board of Supervisors of said County, Missouri.

*James L. Wurm*  
 President

State of Missouri }  
 County of St. Charles }

On this 22nd day of July 1976 before me personally appeared Samuel Splanovic, the undersigned, being by me duly sworn, did say that he is the President of County Life Estates, Inc., a corporation duly organized and existing under the laws of the State of Missouri, and that he is the owner of the above described land, and that he is the owner of the same in common with the undersigned, and that he has authorized me to execute this instrument on behalf of said corporation and that said instrument was signed and sealed on behalf of said corporation and that this instrument is being presented to you for your approval and that this instrument is being recorded by the direction of the Board of Directors of said corporation.

*Samuel Splanovic*  
 Samuel Splanovic  
 Notary Public

In witness whereof, I have signed and sealed the foregoing this 22nd day of July 1976.  
 My commission expires November 14, 1977

THIS FINAL PLAT APPROVED BY THE ST. CHARLES COUNTY PLANNING & ZONING COMMISSION

APPROVED OCT 16 1975  
 ST. CHARLES COUNTY PLANNING & ZONING COMMISSION  
 DATE: *September 5, 1975*  
 SECY: *Franklin*

APPROVED  
 ST. CHARLES COUNTY PLANNING & ZONING COMMISSION  
 OCT 16 1975

APPROVED  
 ST. CHARLES COUNTY PLANNING & ZONING COMMISSION  
 DATE: *5/17/74*  
 SECY: *Bertly P. Kelly*

THIS FINAL PLAT APPROVED BY THE ST. CHARLES COUNTY COURT.  
 Date: *8-28-74*  
*Douglas B. Beahm*  
 Douglas B. Beahm  
 Recorder of Deeds

THIS FINAL PLAT APPROVED BY THE ST. CHARLES COUNTY COURT.

- Lot 184977 pg 521
- Lot 184977 pg 525
- Lot 38 pg 529
- Lot 38 pg 1332
- Lot 38 pg 1798
- Lot 38 pg 1800
- Lot 38 pg 1802
- Lot 38 pg 1803
- Lot 38 pg 1804
- Lot 38 pg 1805
- Lot 38 pg 1806
- Lot 38 pg 1807
- Lot 38 pg 1808
- Lot 38 pg 1809
- Lot 38 pg 1810
- Lot 38 pg 1811
- Lot 38 pg 1812
- Lot 38 pg 1813
- Lot 38 pg 1814
- Lot 38 pg 1815
- Lot 38 pg 1816
- Lot 38 pg 1817
- Lot 38 pg 1818
- Lot 38 pg 1819
- Lot 38 pg 1820
- Lot 38 pg 1821
- Lot 38 pg 1822
- Lot 38 pg 1823
- Lot 38 pg 1824
- Lot 38 pg 1825
- Lot 38 pg 1826
- Lot 38 pg 1827
- Lot 38 pg 1828
- Lot 38 pg 1829
- Lot 38 pg 1830
- Lot 38 pg 1831
- Lot 38 pg 1832
- Lot 38 pg 1833
- Lot 38 pg 1834
- Lot 38 pg 1835
- Lot 38 pg 1836
- Lot 38 pg 1837
- Lot 38 pg 1838
- Lot 38 pg 1839
- Lot 38 pg 1840
- Lot 38 pg 1841
- Lot 38 pg 1842
- Lot 38 pg 1843
- Lot 38 pg 1844
- Lot 38 pg 1845
- Lot 38 pg 1846
- Lot 38 pg 1847
- Lot 38 pg 1848
- Lot 38 pg 1849
- Lot 38 pg 1850
- Lot 38 pg 1851
- Lot 38 pg 1852
- Lot 38 pg 1853
- Lot 38 pg 1854
- Lot 38 pg 1855
- Lot 38 pg 1856
- Lot 38 pg 1857
- Lot 38 pg 1858
- Lot 38 pg 1859
- Lot 38 pg 1860
- Lot 38 pg 1861
- Lot 38 pg 1862
- Lot 38 pg 1863
- Lot 38 pg 1864
- Lot 38 pg 1865
- Lot 38 pg 1866
- Lot 38 pg 1867
- Lot 38 pg 1868
- Lot 38 pg 1869
- Lot 38 pg 1870
- Lot 38 pg 1871
- Lot 38 pg 1872
- Lot 38 pg 1873
- Lot 38 pg 1874
- Lot 38 pg 1875
- Lot 38 pg 1876
- Lot 38 pg 1877
- Lot 38 pg 1878
- Lot 38 pg 1879
- Lot 38 pg 1880
- Lot 38 pg 1881
- Lot 38 pg 1882
- Lot 38 pg 1883
- Lot 38 pg 1884
- Lot 38 pg 1885
- Lot 38 pg 1886
- Lot 38 pg 1887
- Lot 38 pg 1888
- Lot 38 pg 1889
- Lot 38 pg 1890
- Lot 38 pg 1891
- Lot 38 pg 1892
- Lot 38 pg 1893
- Lot 38 pg 1894
- Lot 38 pg 1895
- Lot 38 pg 1896
- Lot 38 pg 1897
- Lot 38 pg 1898
- Lot 38 pg 1899
- Lot 38 pg 1900

