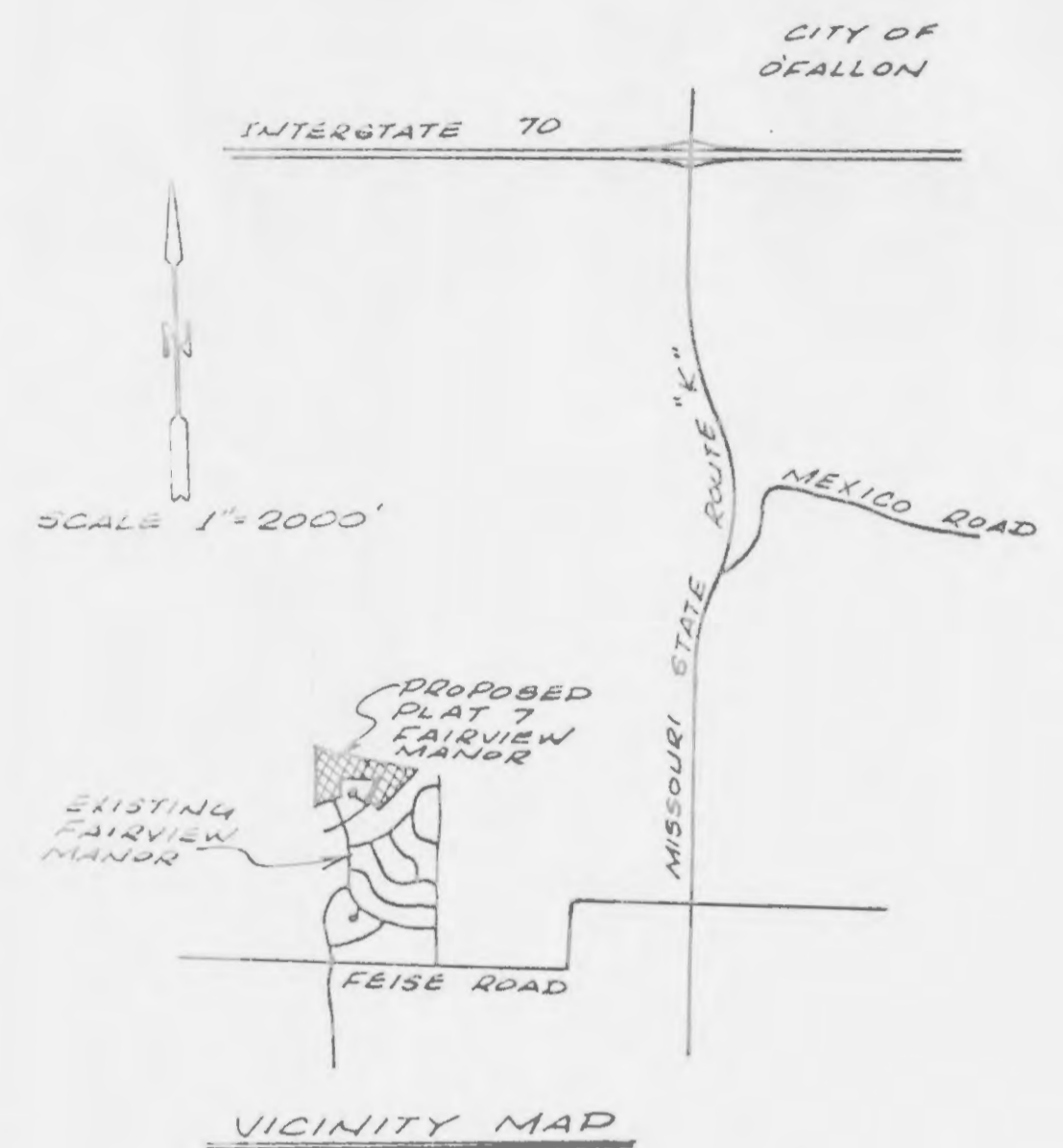
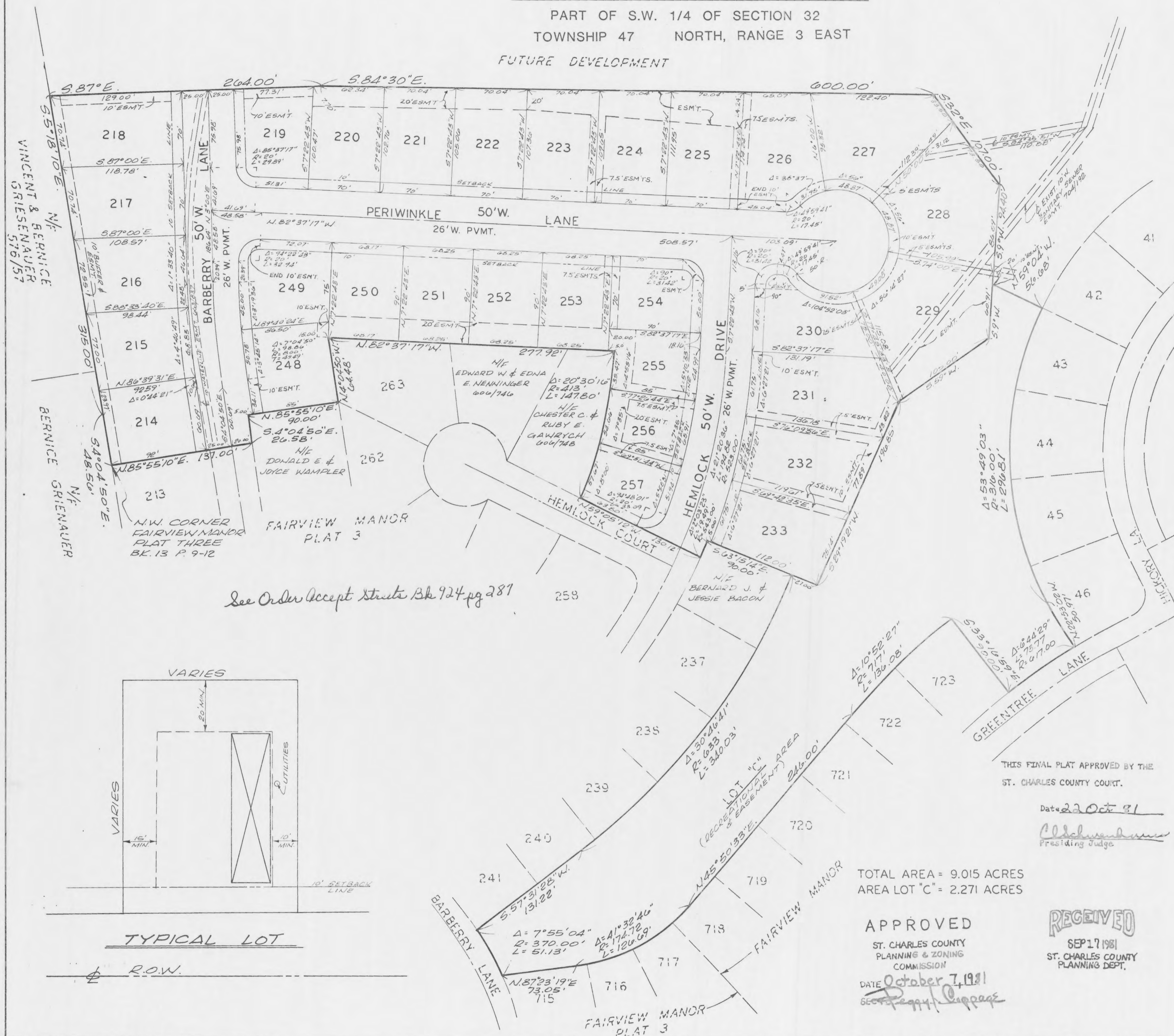


FAIRVIEW MANOR PLAT 7

PART OF S.W. 1/4 OF SECTION 32
TOWNSHIP 47 NORTH, RANGE 3 EAST
FUTURE DEVELOPMENT



10097
FILED FOR RECORD
OCT 23 1981
ST. CHARLES

This is to certify that we, Ingram-Kiethline-Wehmer, Inc., Consulting Engineers, during the month of September, 1981, surveyed and subdivided a part of a 167 acre tract of land which was surveyed by St. Charles County Engineering and Surveying and that the results of said subdivision are hereon correctly shown. Said subdivided tract of land is located in part of the southwest quarter of Section 32, T 47 N, R 3 E, St. Charles County, Missouri.

Ingram-Kiethline-Wehmer, Inc.
REGISTERED LAND SURVEYOR
INGRAM-KIETHLINE-WEHMER, INC.
Consulting Engineers
6 Westbury Drive
St. Charles, MO 63301

Boschert's Mobile Homes Estates, Inc., a Missouri Corporation, owner of the tract of land described in the attached certificate, has caused said tract of land to be subdivided in the manner shown on the annexed plat and said subdivision is hereafter to be known as "Fairview Manor Plat 7"; Barberrry Lane, Periwinkle Lane, Hemlock Drive and all roundings and intersections as shown on said plat are hereby dedicated to public use forever. The easements shown on said plat are hereby granted for the purpose of installing and maintaining public utilities, and for sewer and drainage purposes. The building lines shown on said plat are hereby established.

Boschert's Mobile Homes Estates, Inc., a Missouri Corporation, hereby agrees that County acceptance of the above mentioned roadways shall not be petitioned until said roadways are improved in such a manner as to comply with the required improvements section of Rules for Land Subdivision for St. Charles County and amendment thereto, adopted by the Planning and Zoning Commission of St. Charles County, Missouri, on November 2, 1959.

Said subdivision shall be subject to the conditions, reservations, restrictions, and protective covenants of Fairview Manor Plat 7, as set forth in an instrument dated October 1, 1981, and filed for record in Book 411, Page 605 in the office of the Recorder of Deeds for St. Charles County, Missouri.

In witness whereof, Boschert's Mobile Homes Estates, Inc., a Missouri Corporation, has caused these presents to be executed this 23rd day of October, 1981.

THIS FINAL PLAT APPROVED BY THE
ST. CHARLES COUNTY COURT.

BOSCHERT'S MOBILE HOMES ESTATES, INC.
By: *Arlic H. Meyer*
Arlic H. Meyer, President

STATE OF MISSOURI)
COUNTY OF ST. CHARLES) SS.

Date 23 Oct 81
Richard L. Krill
Presiding Judge

On this 23rd day of October, 1981, before me personally appeared Arlic H. Meyer, President of Boschert's Mobile Homes Estates, Inc., a Missouri Corporation, to me known to be the person described in and who executed the foregoing instrument, and acknowledged that he executed the same as his free act and deed.

In Testimony Whereof, I have hereunto set my hand and affixed my official seal in the County and State aforesaid, the day and year first above written.

My Notary Commission Expires July 16th 1984
Richard L. Krill
Notary Public RICHARD L. KRILL

APPROVED
ST. CHARLES COUNTY
PLANNING & ZONING
COMMISSION
DATE October 7, 1981
Scott J. Cripps

RECEIVED
SEP 17 1981
ST. CHARLES COUNTY
PLANNING DEPT.

This Final Plat
approved only upon conditions as set
forth by the Planning & Zoning Comm.

See Order Accept Streets Bk 924 pg 281