

HARVEST AT HOPEWELL PLAT ONE-B

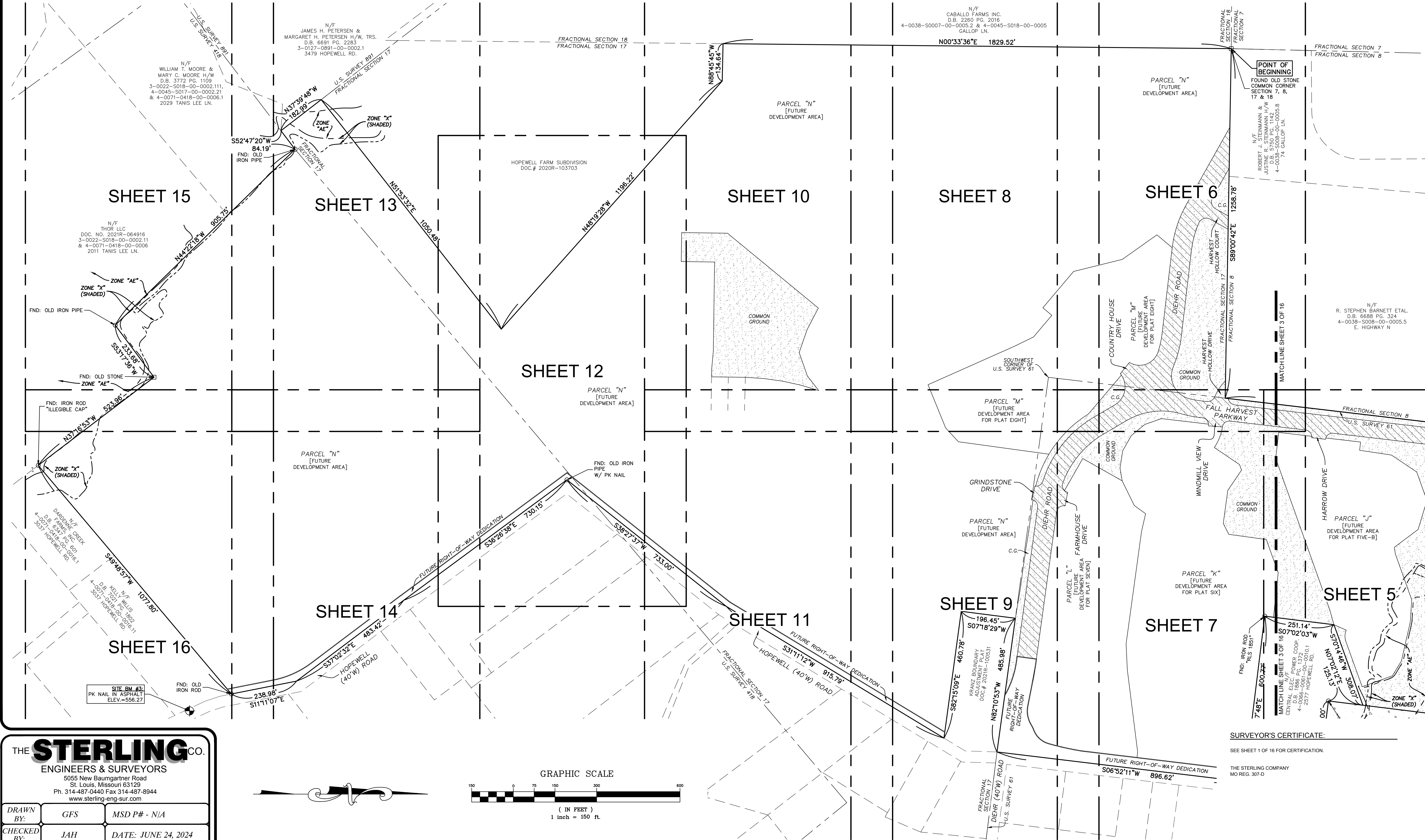
SITE OVERVIEW & SHEET INDEX

SYMBOL LEGEND:

- ⊕ = BENCHMARK
- = FOUND PERMANENT MONUMENT
- = FOUND SEMI-PERMANENT MONUMENT
- ⦿ = FOUND DISK MONUMENT

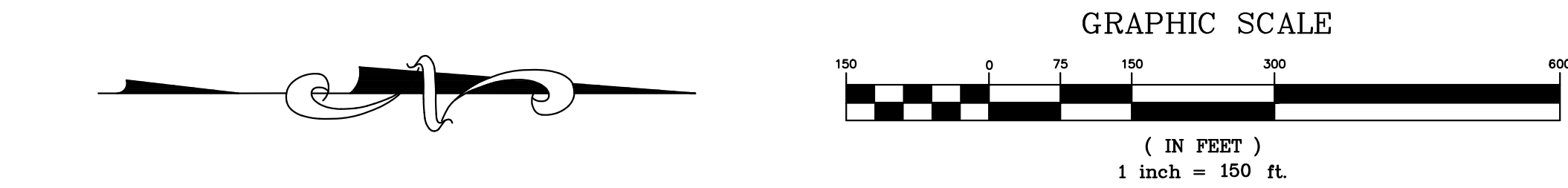
HATCHING LEGEND:

- PUBLIC RIGHT-OF-WAY
- PLAT ONE-A AREA
- PLAT ONE-B AREA



THE STERLING CO.
ENGINEERS & SURVEYORS
5055 New Baumgartner Road
St. Louis, Missouri 63129
Ph. 314-487-0440 Fax 314-487-8944
www.sterling-eng-sur.com

DRAWN BY:	GFS	MSD P# - N/A
CHECKED BY:	JAH	DATE: JUNE 24, 2024
JOB NO.:	20-09-327	HARVEST AT HOPEWELL



SURVEYOR'S CERTIFICATE:

SEE SHEET 1 OF 16 FOR CERTIFICATION.

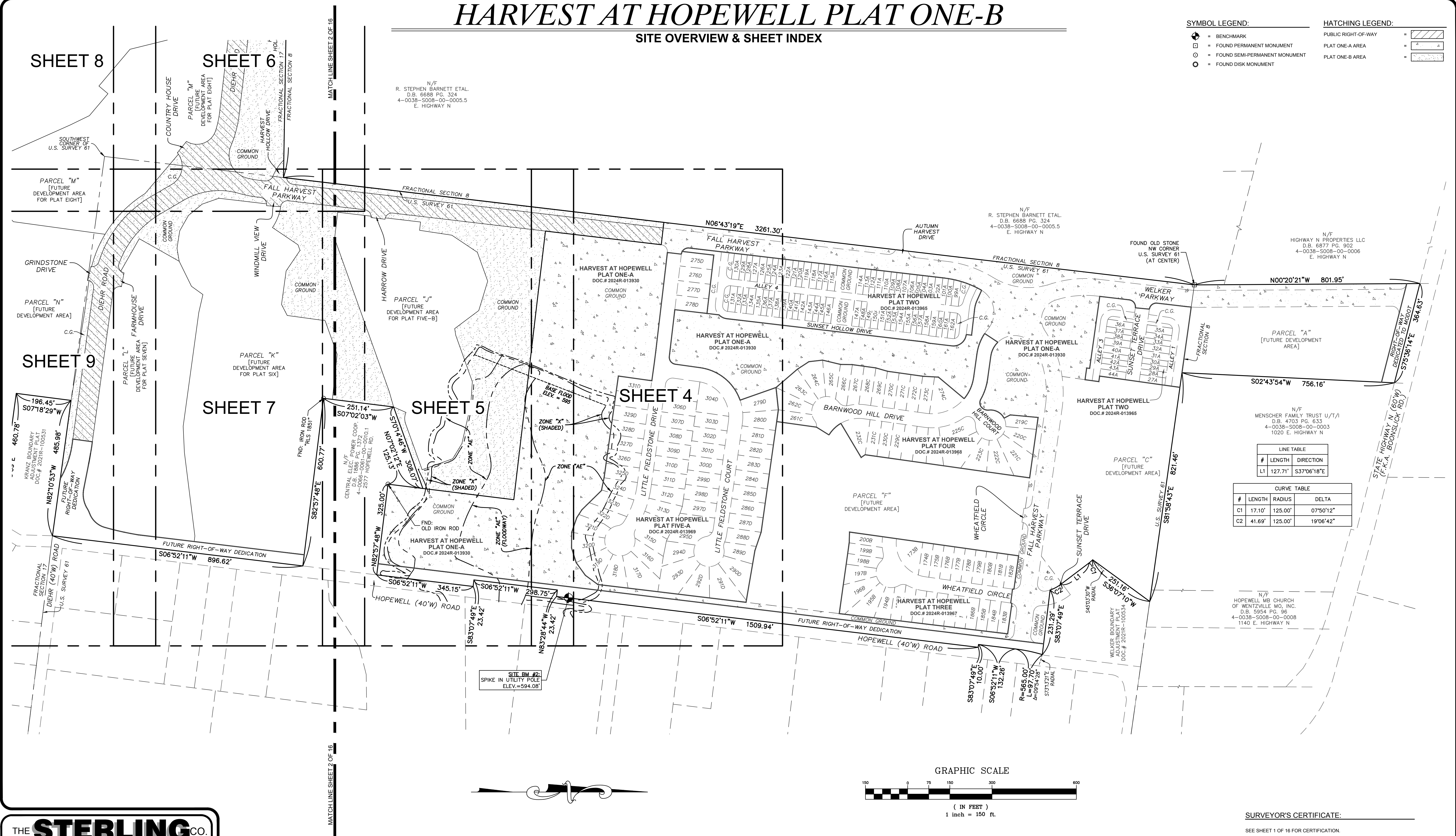
THE STERLING COMPANY
MO REG. 307-D

JAMEY A. HENSON, P.L.S. - VICE PRESIDENT
MO. REG. I.S. #2007017963

DATE

HARVEST AT HOPEWELL PLAT ONE-B

SITE OVERVIEW & SHEET INDEX



THE STERLING CO.
ENGINEERS & SURVEYORS
5055 New Baumgartner Road
St. Louis, Missouri 63129
Ph. 314-487-0440 Fax 314-487-8944
www.sterling-eng-sur.com

DRAWN BY:	GFS	MSD P# - N/A
CHECKED BY:	JAH	DATE: JUNE 24, 2024
JOB NO.:	20-09-327	HARVEST AT HOPEWELL

Drawing name: C:\Users\gsemon\appdata\local\temp\AcPublish_32992\9327\Fac1B.dwg Plotted on: Jun 24, 2024 - 2:33pm Plotted by: gsemon

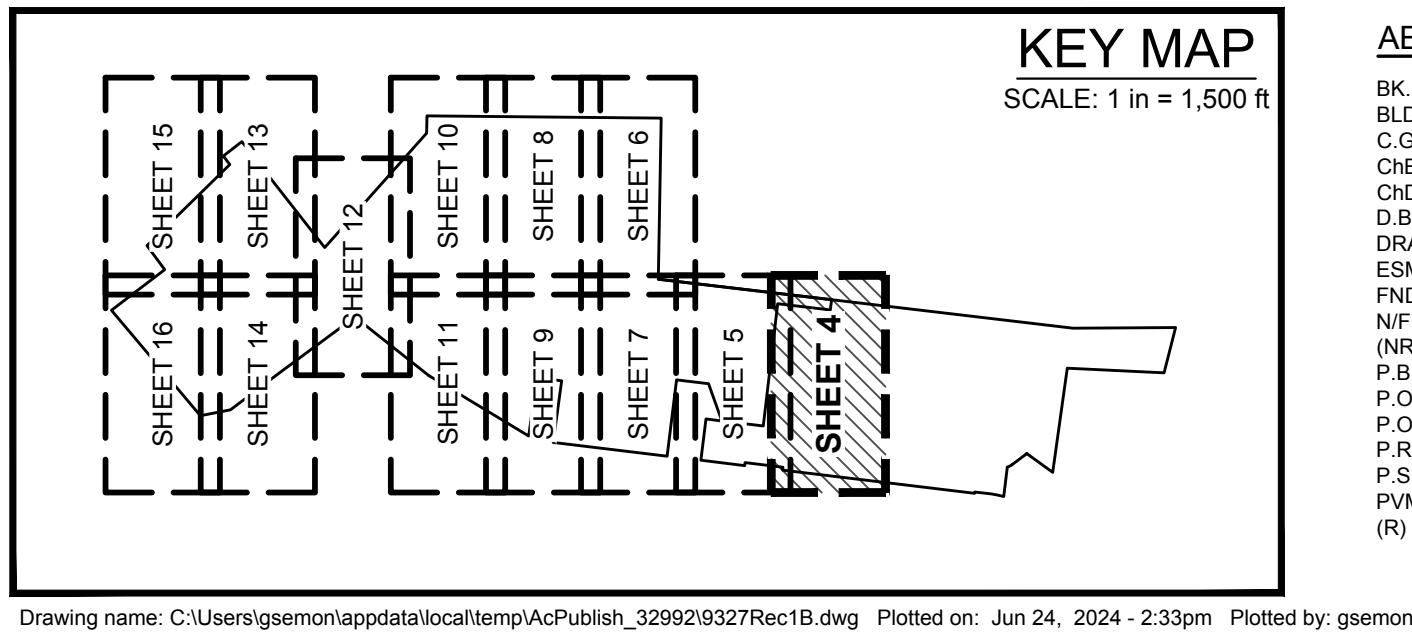
SURVEYOR'S CERTIFICATE:

SEE SHEET 1 OF 16 FOR CERTIFICATION.

THE STERLING COMPANY
MO REG. 307-D

JAMEY A. HENSON, P.L.S. - VICE PRESIDENT
MO. REG. I.S. #2007017963

DATE



ABBREVIATION LEGEND:

BK.	=	BOOK
BLDG.	=	BUILDING
C.G.	=	COMMON GROUND
CHB	=	CHORD BEARING
CHD	=	CHORD DISTANCE
D.B.	=	DEED BOOK
DRAIN.	=	DRAINAGE
ESMT.	=	EASEMENT
FND.	=	FOUND
N/F	=	NOW OR FORMERLY
(NR)	=	NON-RADIAL
P.B.	=	PLAT BOOK
P.O.B	=	POINT OF BEGINNING
P.O.C.	=	POINT OF COMMENCEMENT
P.R.M.E.	=	PRIVATE ROADWAY MAINTENANCE EASEMENT
P.S.E.	=	PRIVATE SIDEWALK EASEMENT
P.	=	PAVEMENT
(R)	=	RECORD

ABBREVIATION LEGEND:

R.O.W.	=	RIGHT-OF-WAY
(S)	=	SURVEYED
S.D.T.	=	SIGHT DISTANCE TRIANGLE
S.F.	=	SQUARE FEET
T.S.C.L.	=	TEMPORARY SLOPE AND CONSTRUCTION LICENSE
W	=	WIDTH

SYMBOL LEGEND:

▲	= SET PERMANENT MONUMENT IN ACCORDANCE WITH MISSOURI STANDARDS (5/8" I ROD W/ ALUMINUM CAP).
●	= SET SEMI-PERMANENT MONUMENT IN ACCORDANCE WITH MISSOURI STANDARDS. (1/2" I ROD W/ PLASTIC CAP OR CUT CROSS).
○	= SET PERMANENT MONUMENT IN PREVIOUS PLAT.
⚙	= SET SEMI-PERMANENT MONUMENT IN PREVIOUS PLAT.
□	= FOUND PERMANENT MONUMENT
○	= FOUND SEMI-PERMANENT MONUMENT
+	= FOUND CROSS
⚓	= FOUND ANCHOR
⬮	= BENCHMARK
⑤23	= ADDRESS
*	= LOT SUBJECT TO STREET CREEP

HATCHING LEGEND:

PUBLIC RIGHT-OF-WAY	=	
DRAINAGE EASEMENT	=	
DETENTION BASIN	=	
DEFEASIBLE ACCESS EASEMENT	=	

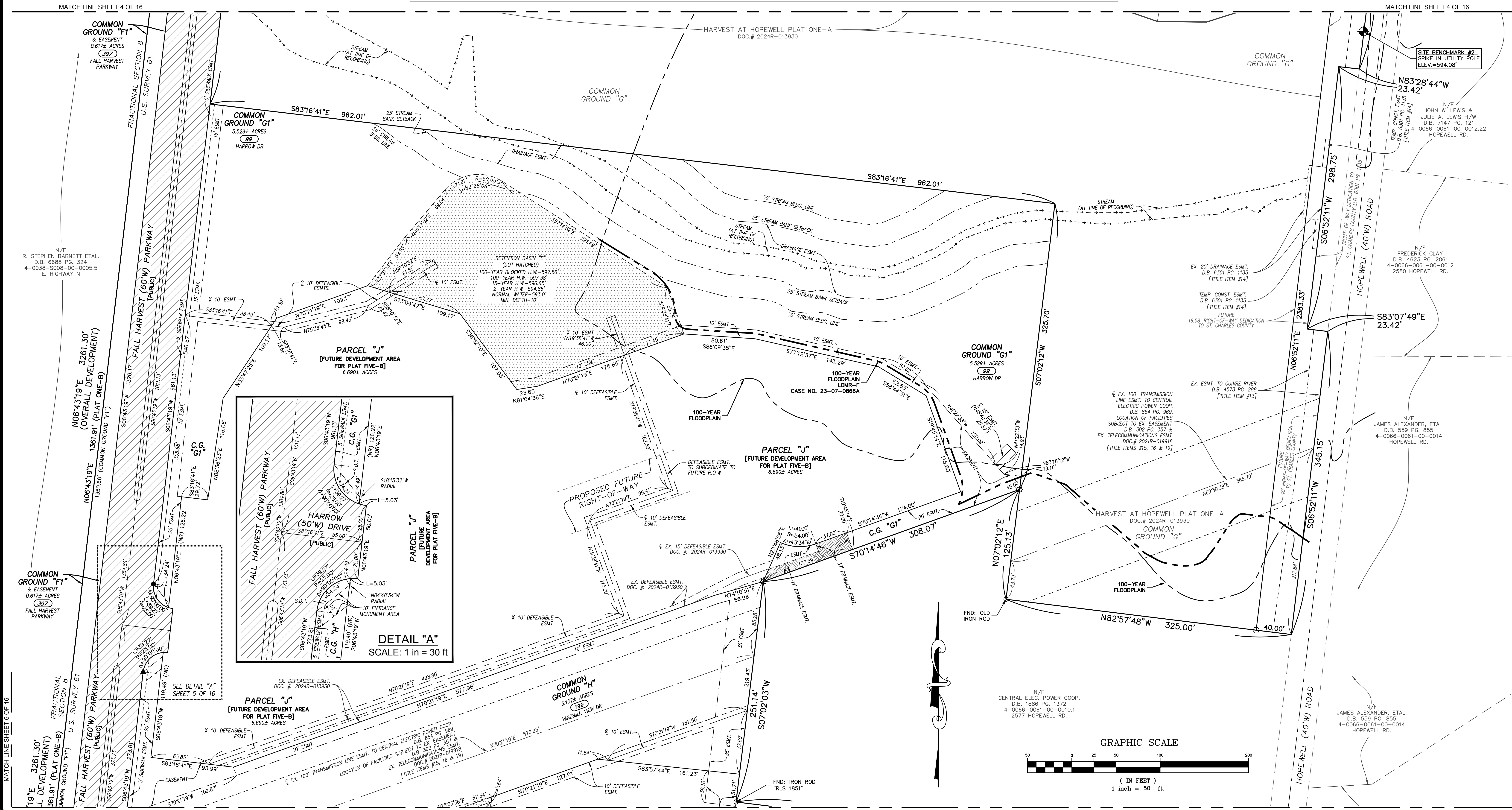
SURVEYOR'S CERTIFICATE:

SEE SHEET 1 OF 16 FOR CERTIFICATION.

THE STERLING COMPANY
MO REG. 307-D

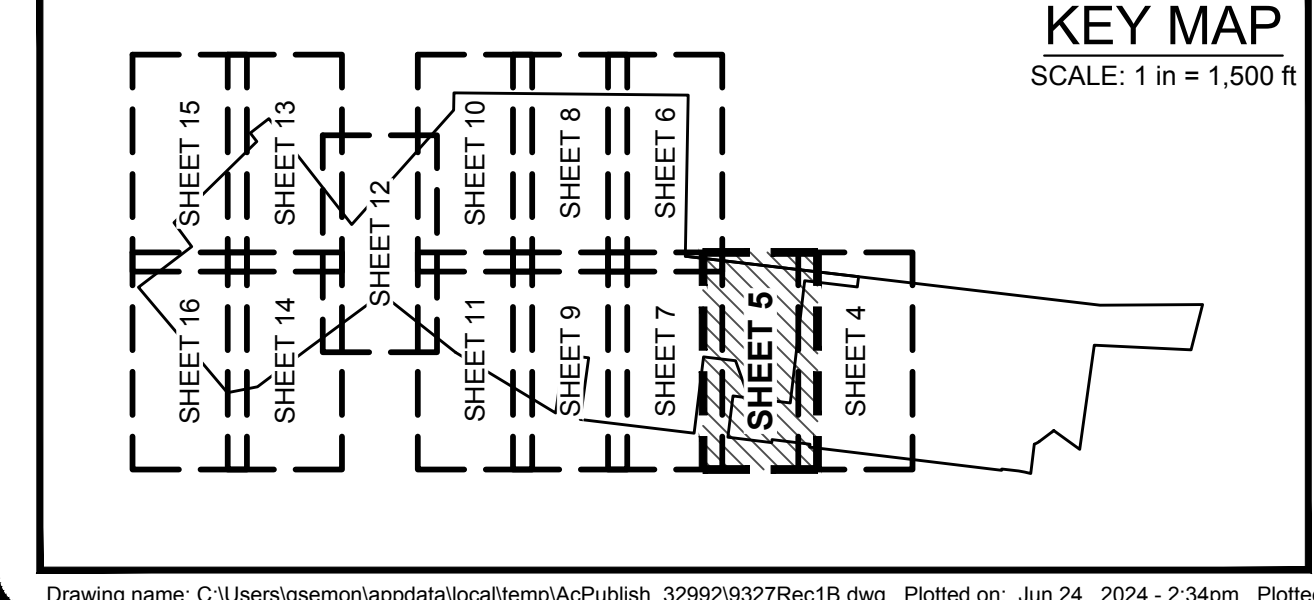
JAMEY A. HENSON, P.L.S. - VICE PRESIDENT	DATE
MO. REG. L.S. #2007017963	

HARVEST AT HOPEWELL PLAT ONE-B



THE STERLING CO.
ENGINEERS & SURVEYORS
5055 New Baumgartner Road
St. Louis, Missouri 63129
Ph. 314-487-0440 Fax 314-487-8944
www.sterling-eng-sur.com

DRAWN BY:	GFS	MSD P# - N/A
CHECKED BY:	JAH	DATE: JUNE 24, 2024
JOB NO.:	20-09-327	HARVEST AT HOPEWELL



- ABBREVIATION LEGEND:**
- BK. = BOOK
 - BLDG. = BUILDING
 - C.G. = COMMON GROUND
 - CHB. = CHORD BEARING
 - CHD. = CHORD DISTANCE
 - D.B. = DEED BOOK
 - DRAIN. = DRAINAGE
 - ESMT. = EASEMENT
 - FND. = FOUND
 - N/F. = NOW OR FORMERLY
 - (NR) = NON-RADIAL
 - P.B. = PLAT BOOK
 - P.O.B. = POINT OF BEGINNING
 - P.O.C. = POINT OF COMMENCEMENT
 - P.R.M.E. = PRIVATE ROADWAY MAINTENANCE EASEMENT
 - P.S.E. = PRIVATE SIDEWALK EASEMENT
 - P.V.M.T. = PAVEMENT
 - (R) = RECORD

- ABBREVIATION LEGEND:**
- R.O.W. = RIGHT-OF-WAY
 - (S) = SURVEYED
 - S.D.T. = SIGHT DISTANCE TRIANGLE
 - S.F. = SQUARE FEET
 - T.S.C.L. = TEMPORARY SLOPE AND CONSTRUCTION LICENSE
 - W. = WIDTH

- SYMBOL LEGEND:**
- ▲ = SET PERMANENT MONUMENT IN ACCORDANCE WITH MISSOURI STANDARDS (5/8" I ROD W/ ALUMINUM CAP).
 - = SET SEMI-PERMANENT MONUMENT IN ACCORDANCE WITH MISSOURI STANDARDS (1/2" I ROD W/ PLASTIC CAP OR CUT CROSS).
 - = SET PERMANENT MONUMENT IN PREVIOUS PLAT.
 - ☆ = SET SEMI-PERMANENT MONUMENT IN PREVIOUS PLAT.
 - = FOUND PERMANENT MONUMENT
 - ⊙ = FOUND SEMI-PERMANENT MONUMENT
 - ⊕ = FOUND CROSS
 - ⊙ = FOUND ANCHOR
 - ⊙ = BENCHMARK
 - 523 = ADDRESS
 - * = LOT SUBJECT TO STREET CREEP

- HATCHING LEGEND:**
- PUBLIC RIGHT-OF-WAY
 - DRAINAGE EASEMENT
 - DETENTION BASIN
 - DEFEASIBLE ACCESS EASEMENT

SURVEYOR'S CERTIFICATE:

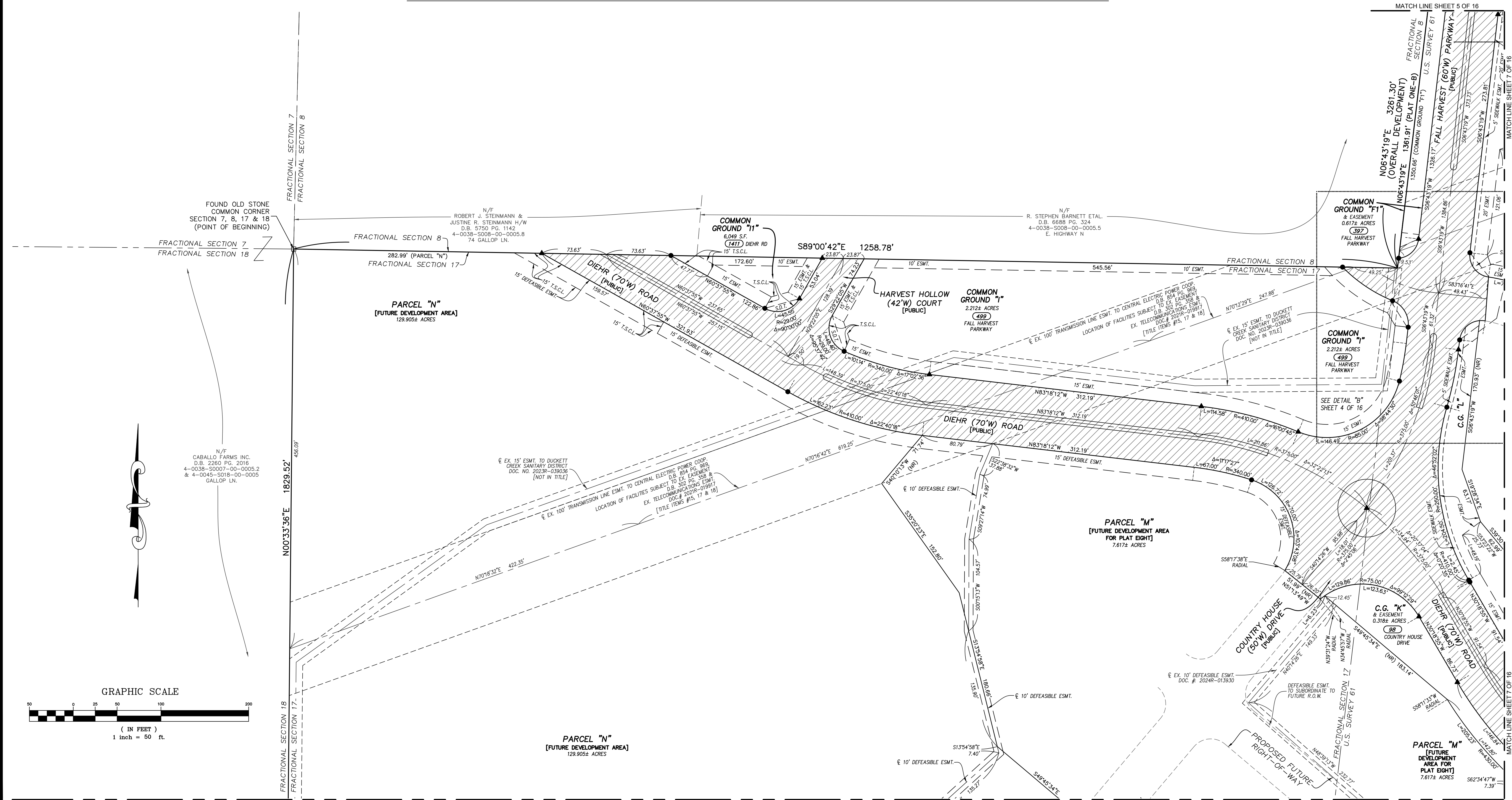
SEE SHEET 1 OF 16 FOR CERTIFICATION.

THE STERLING COMPANY
MO REG. 307-D

JAMEY A. HENSON, P.L.S. - VICE PRESIDENT
DATE
MO. REG. I.S. #2007017963

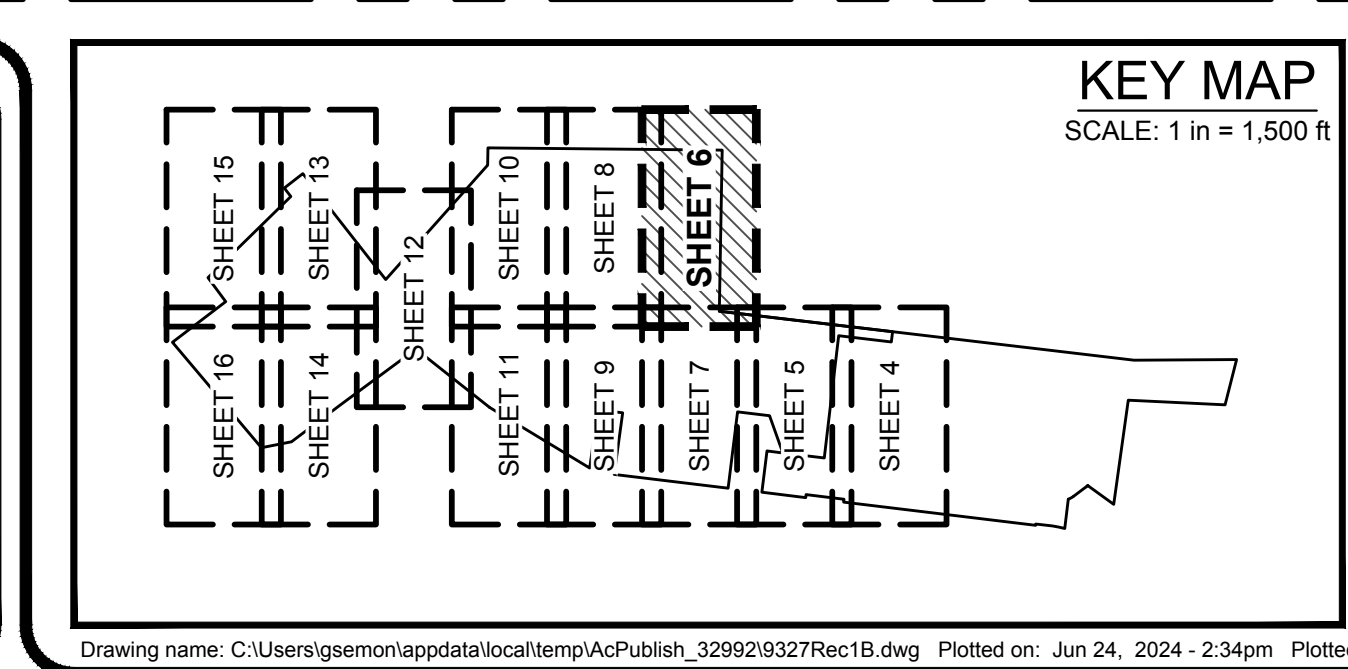
SHEET 5 OF 16

HARVEST AT HOPEWELL PLAT ONE-B



THE STERLING CO.
ENGINEERS & SURVEYORS
5055 New Baumgartner Road
St. Louis, Missouri 63129
Ph. 314-487-0440 Fax 314-487-8944
www.sterling-eng-sur.com

DRAWN BY:	GFS	MSD P# - N/A
CHECKED BY:	JAH	DATE: JUNE 24, 2024
JOB NO.:	20-09-327	HARVEST AT HOPEWELL



ABBREVIATION LEGEND:

BK.	= BOOK	R.O.W.	= RIGHT-OF-WAY
BLDG.	= BUILDING	(S)	= SURVEYED
C.G.	= COMMON GROUND	S.D.T.	= SIGHT DISTANCE TRIANGLE
CHB	= CHORD BEARING	S.F.	= SQUARE FEET
CHD	= CHORD DISTANCE	T.S.C.L.	= TEMPORARY SLOPE AND CONSTRUCTION LICENSE
D.B.	= DEED BOOK	W	= WIDTH
DRAIN	= DRAINAGE		
ESMT.	= EASEMENT		
FND.	= FOUND		
N/F	= NOW OR FORMERLY		
(NR)	= NON-RADIAL		
P.B.	= PLAT BOOK		
P.O.B.	= POINT OF BEGINNING		
P.O.C.	= POINT OF COMMENCEMENT		
P.R.M.E.	= PRIVATE ROADWAY MAINTENANCE EASEMENT		
P.S.E.	= PRIVATE SIDEWALK EASEMENT		
P.V.M.T.	= PAVEMENT		
(R)	= RECORD		

ABBREVIATION LEGEND:

R.O.W.	= RIGHT-OF-WAY
(S)	= SURVEYED
S.D.T.	= SIGHT DISTANCE TRIANGLE
S.F.	= SQUARE FEET
T.S.C.L.	= TEMPORARY SLOPE AND CONSTRUCTION LICENSE
W	= WIDTH

SYMBOL LEGEND:

▲	= SET PERMANENT MONUMENT IN ACCORDANCE WITH MISSOURI STANDARDS (5/8" I ROD W/ ALUMINUM CAP).
●	= SET SEMI-PERMANENT MONUMENT IN ACCORDANCE WITH MISSOURI STANDARDS (1/2" I ROD W/ PLASTIC CAP OR CUT CROSS).
○	= SET PERMANENT MONUMENT IN PREVIOUS PLAT.
☆	= SET SEMI-PERMANENT MONUMENT IN PREVIOUS PLAT.
□	= FOUND PERMANENT MONUMENT
⊙	= FOUND SEMI-PERMANENT MONUMENT
+	= FOUND CROSS
⬇	= FOUND ANCHOR
⊕	= BENCHMARK
523	= ADDRESS
*	= LOT SUBJECT TO STREET CREEP

HATCHING LEGEND:

PUBLIC RIGHT-OF-WAY	= [Hatching Pattern]
DRAINAGE EASEMENT	= [Hatching Pattern]
DETENTION BASIN	= [Hatching Pattern]
DEFEASIBLE ACCESS EASEMENT	= [Hatching Pattern]

SURVEYOR'S CERTIFICATE:

SEE SHEET 1 OF 16 FOR CERTIFICATION.

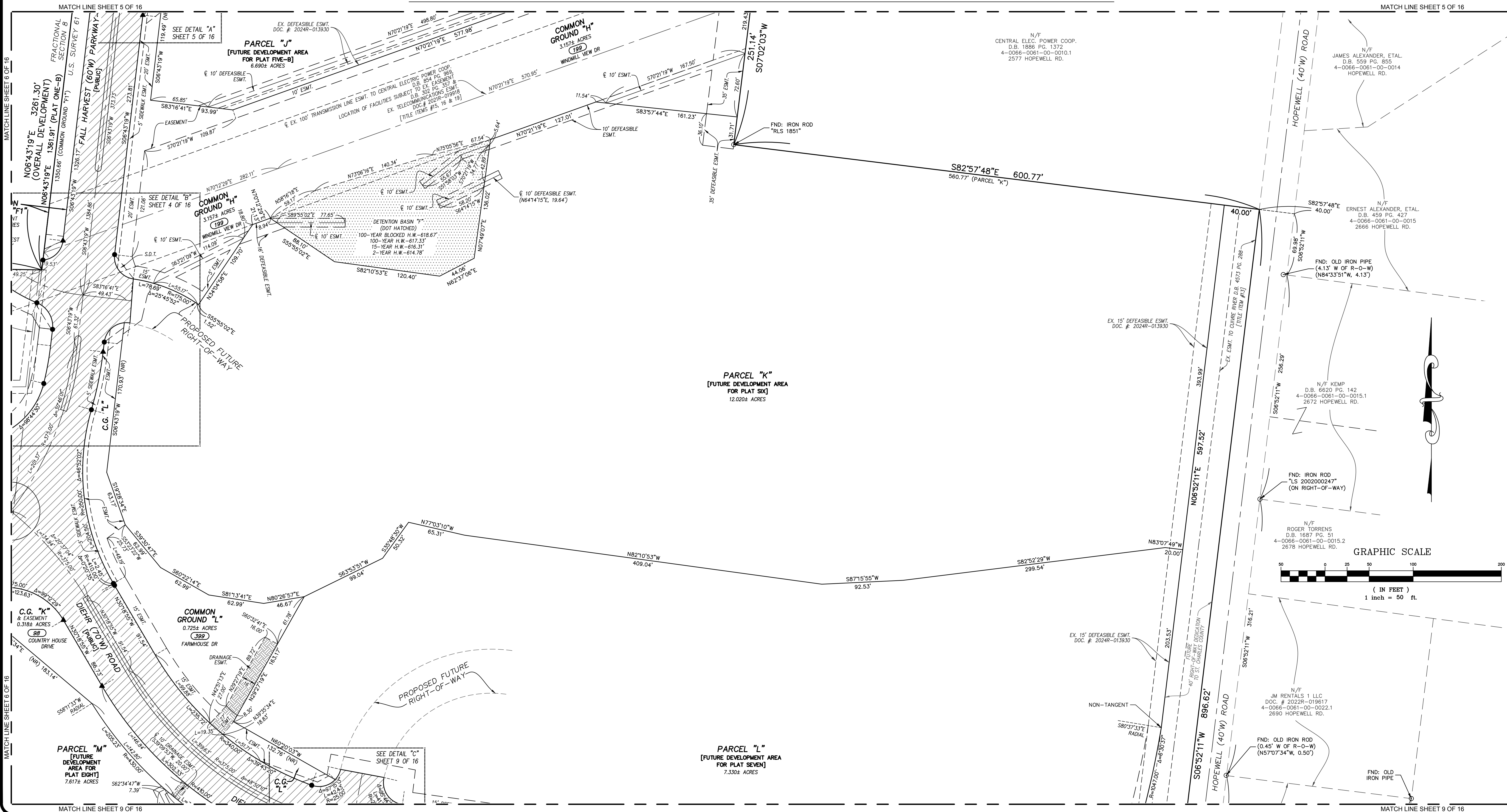
THE STERLING COMPANY
MO REG. 307-D

JAMEY A. HENSON, P.L.S. - VICE PRESIDENT
MO REG. I.S. #2007017963

DATE

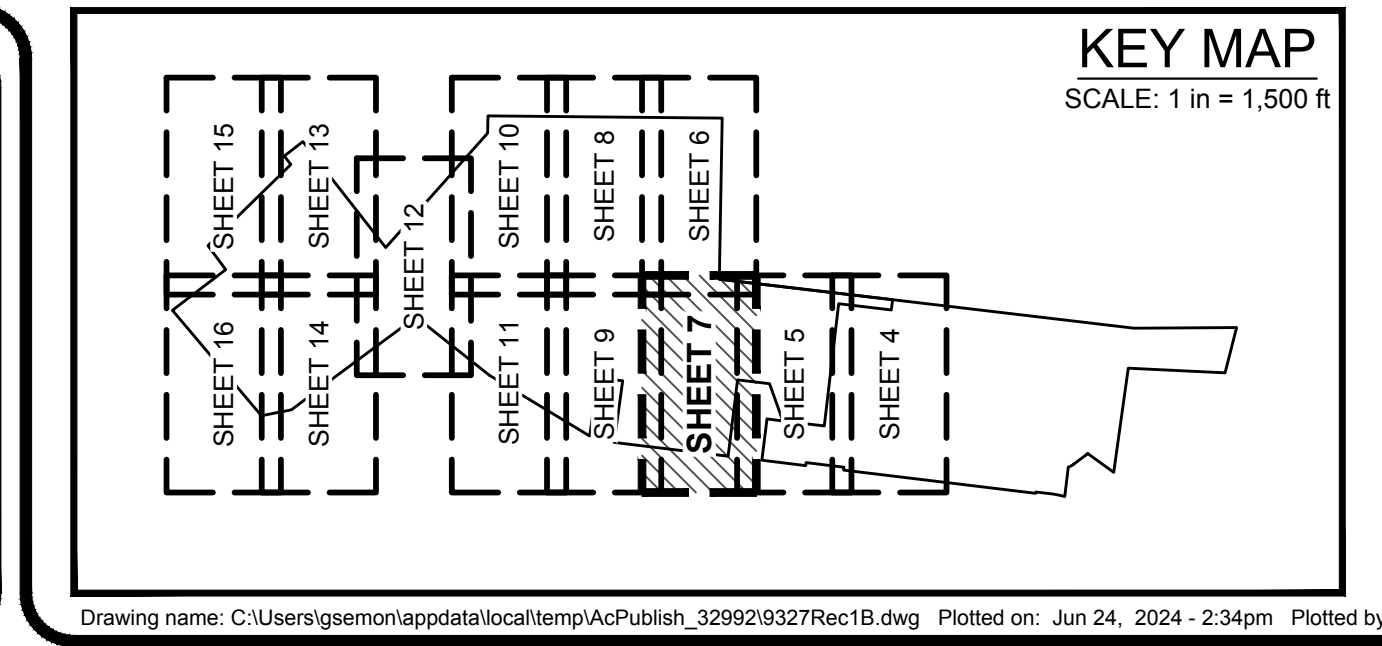
SHEET 6 OF 16

HARVEST AT HOPEWELL PLAT ONE-B



THE STERLING CO.
ENGINEERS & SURVEYORS
5055 New Baumgartner Road
St. Louis, Missouri 63129
Ph. 314-487-0440 Fax 314-487-8944
www.sterling-eng-sur.com

DRAWN BY:	GFS	MSD P# - N/A
CHECKED BY:	JAH	DATE: JUNE 24, 2024
JOB NO.:	20-09-327	HARVEST AT HOPEWELL



ABBREVIATION LEGEND:

BK.	BOOK
BLDG.	BUILDING
C.G.	COMMON GROUND
CHB	CHORD BEARING
CHD	CHORD DISTANCE
D.B.	DEED BOOK
DRAIN	DRAINAGE
ESMT.	EASEMENT
FND.	FOUND
N/F	NOW OR FORMERLY
(NR)	NON-RADIAL
P.B.	PLAT BOOK
P.O.B.	POINT OF BEGINNING
P.O.C.	POINT OF COMMENCEMENT
P.R.M.E.	PRIVATE ROADWAY MAINTENANCE EASEMENT
P.S.E.	PRIVATE SIDEWALK EASEMENT
P.V.M.T.	PAVEMENT
(R)	RECORD

ABBREVIATION LEGEND:

R.O.W.	RIGHT-OF-WAY
(S)	SURVEYED
S.D.T.	SIGHT DISTANCE TRIANGLE
S.F.	SQUARE FEET
T.S.C.L.	TEMPORARY SLOPE AND CONSTRUCTION LICENSE
W	WIDTH

SYMBOL LEGEND:

▲	SET PERMANENT MONUMENT IN ACCORDANCE WITH MISSOURI STANDARDS (5/8" I. ROD W/ ALUMINUM CAP).
●	SET SEMI-PERMANENT MONUMENT IN ACCORDANCE WITH MISSOURI STANDARDS (1/2" I. ROD W/ PLASTIC CAP OR CUT CROSS).
○	SET PERMANENT MONUMENT IN PREVIOUS PLAT.
☆	SET SEMI-PERMANENT MONUMENT IN PREVIOUS PLAT.
□	FOUND PERMANENT MONUMENT
⊙	FOUND SEMI-PERMANENT MONUMENT
+	FOUND CROSS
⬇	FOUND ANCHOR
⊕	BENCHMARK
523	ADDRESS
*	LOT SUBJECT TO STREET CREEP

HATCHING LEGEND:

PUBLIC RIGHT-OF-WAY	
DRAINAGE EASEMENT	
DETENTION BASIN	
DEFESIBLE ACCESS EASEMENT	

SURVEYOR'S CERTIFICATE:

SEE SHEET 1 OF 16 FOR CERTIFICATION.
THE STERLING COMPANY MO REG. 307-D
JAMEY A. HENSON, P.L.S. - VICE PRESIDENT MO. REG. I.S. #2007017963
DATE

HARVEST AT HOPEWELL PLAT ONE-B

MATCH LINE SHEET 6 OF 16

MATCH LINE SHEET 6 OF 16

FRACTIONAL SECTION 18
FRACTIONAL SECTION 17

N00°33'36"E 1829.52'

FRACTIONAL SECTION 18
FRACTIONAL SECTION 17

PARCEL "N"
[FUTURE DEVELOPMENT AREA]
129.905± ACRES

EX. 15' ESMT. TO DUCKETT
CREEK SANITARY DISTRICT
DOC. NO. 2023R-039036
[NOT IN TITLE]

N/F
CABALLO FARMS, INC.
D.B. 2260 PG. 2016
4-0038-S0007-00-0005.2
& 4-0045-S018-00-0005
GALLOP LN.



GRAPHIC SCALE



(IN FEET)
1 inch = 50 ft.

MATCH LINE SHEET 10 OF 16

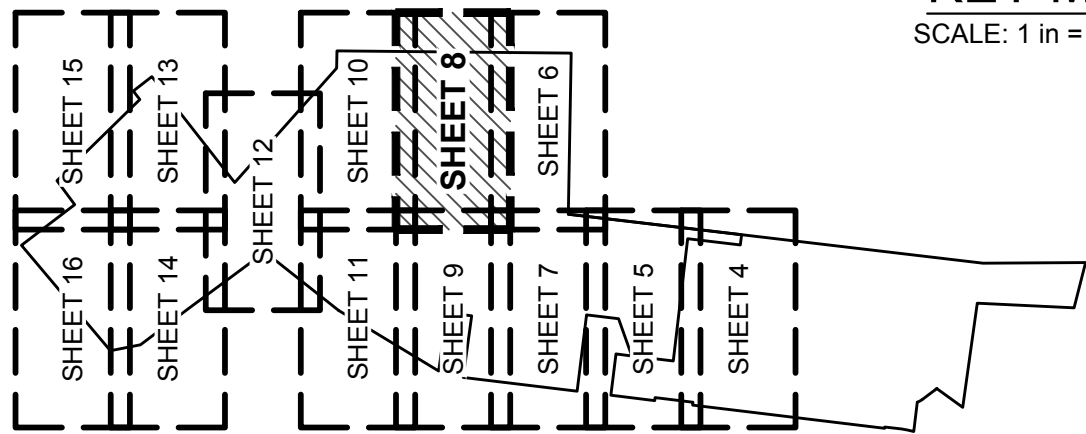
MATCH LINE SHEET 10 OF 16

EX. 15' ESMT. TO DUCKETT
CREEK SANITARY DISTRICT
DOC. NO. 2023R-039036
[NOT IN TITLE]

PARCEL "N"
[FUTURE DEVELOPMENT AREA]
129.905± ACRES

KEY MAP

SCALE: 1 in = 1,500 ft.



Drawing name: C:\Users\gsemon\appdata\local\temp\AcPublish_32992\9327Rec18.dwg Plotted on: Jun 24, 2024 - 2:34pm Plotted by: gsemon

ABBREVIATION LEGEND:

BK.	= BOOK
BLDG.	= BUILDING
C.G.	= COMMON GROUND
CHB	= CHORD BEARING
CHD	= CHORD DISTANCE
D.B.	= DEED BOOK
DRAIN.	= DRAINAGE
ESMT.	= EASEMENT
FND.	= FOUND
N/F	= NOW OR FORMERLY
(NR)	= NON-RADIAL
P.B.	= PLAT BOOK
P.O.B.	= POINT OF BEGINNING
P.O.C.	= POINT OF COMMENCEMENT
P.R.M.E.	= PRIVATE ROADWAY MAINTENANCE EASEMENT
P.S.E.	= PRIVATE SIDEWALK EASEMENT
PVMT.	= PAVEMENT
(R)	= RECORD

ABBREVIATION LEGEND:

R.O.W.	= RIGHT-OF-WAY
(S)	= SURVEYED
S.D.T.	= SIGHT DISTANCE TRIANGLE
S.F.	= SQUARE FEET
T.S.C.L.	= TEMPORARY SLOPE AND CONSTRUCTION LICENSE
W	= WIDTH

SYMBOL LEGEND:

▲	= SET PERMANENT MONUMENT IN ACCORDANCE WITH MISSOURI STANDARDS (5/8" I ROD W/ ALUMINUM CAP).
●	= SET SEMI-PERMANENT MONUMENT IN ACCORDANCE WITH MISSOURI STANDARDS. (1/2" I.ROD W/ PLASTIC CAP OR CUT CROSS).
○	= SET PERMANENT MONUMENT IN PREVIOUS PLAT.
☆	= SET SEMI-PERMANENT MONUMENT IN PREVIOUS PLAT.
□	= FOUND PERMANENT MONUMENT
⊙	= FOUND SEMI-PERMANENT MONUMENT
+	= FOUND CROSS
⬇	= FOUND ANCHOR
⬇	= BENCHMARK
523	= ADDRESS
*	= LOT SUBJECT TO STREET CREEP

HATCHING LEGEND:

PUBLIC RIGHT-OF-WAY	=	
DRAINAGE EASEMENT	=	
DETENTION BASIN	=	
DEFEASIBLE ACCESS EASEMENT	=	

SURVEYOR'S CERTIFICATE:

SEE SHEET 1 OF 16 FOR CERTIFICATION.

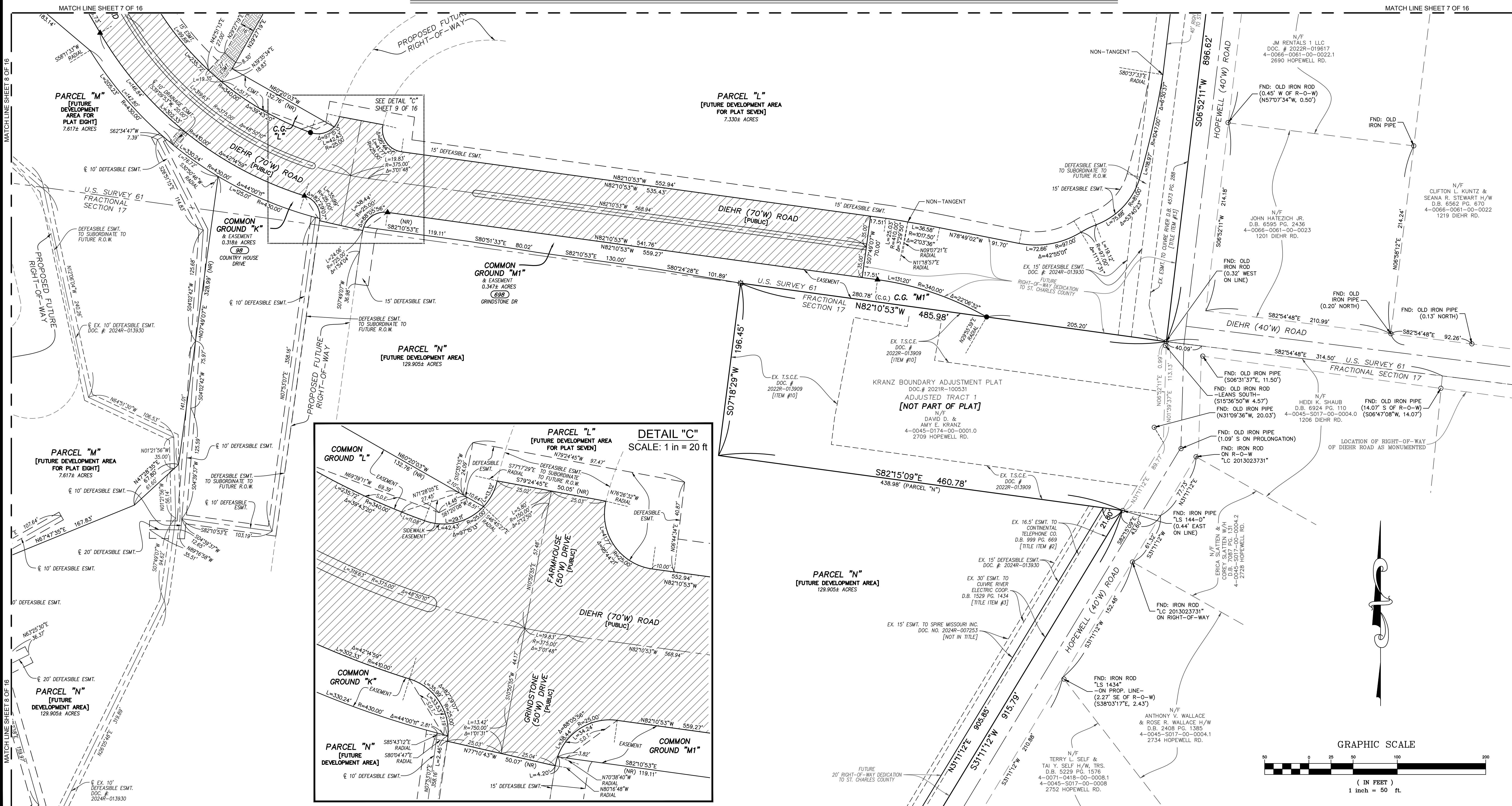
THE STERLING COMPANY
MO REG. 307-D

JAMEY A. HENSON, P.L.S. - VICE PRESIDENT
MO REG. I.S. #2007017963

DATE

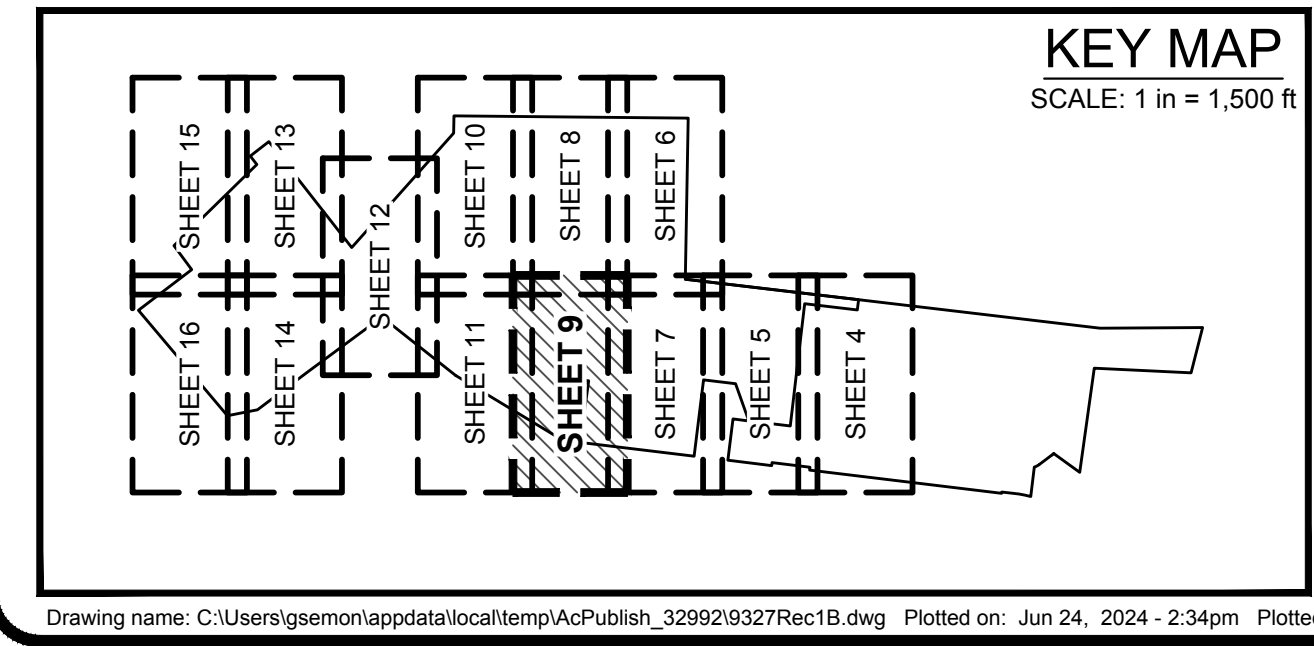
SHEET 8 OF 16

HARVEST AT HOPEWELL PLAT ONE-B



THE STERLING CO.
ENGINEERS & SURVEYORS
5055 New Baumgartner Road
St. Louis, Missouri 63129
Ph. 314-487-0440 Fax 314-487-8944
www.sterling-eng-sur.com

DRAWN BY:	GFS	MSD P# - N/A
CHECKED BY:	JAH	DATE: JUNE 24, 2024
JOB NO.:	20-09-327	HARVEST AT HOPEWELL



ABBREVIATION LEGEND:

BK.	BOOK
BLDG.	BUILDING
C.G.	COMMON GROUND
CHB.	CHORD BEARING
CHD.	CHORD DISTANCE
D.B.	DEED BOOK
DRAIN.	DRAINAGE
ESMT.	EASEMENT
FND.	FOUND
N/F.	NOW OR FORMERLY
(NR)	NON-RADIAL
P.B.	PLAT BOOK
P.O.B.	POINT OF BEGINNING
P.O.C.	POINT OF COMMENCEMENT
P.R.M.E.	PRIVATE ROADWAY MAINTENANCE EASEMENT
P.S.E.	PRIVATE SIDEWALK EASEMENT
P.V.M.T.	PAVEMENT
(R)	RECORD

ABBREVIATION LEGEND:

R.O.W.	RIGHT-OF-WAY
(S)	SURVEYED
S.D.T.	SIGHT DISTANCE TRIANGLE
S.F.	SQUARE FEET
T.S.C.L.	TEMPORARY SLOPE AND CONSTRUCTION LICENSE
W	WIDTH

SYMBOL LEGEND:

▲	SET PERMANENT MONUMENT IN ACCORDANCE WITH MISSOURI STANDARDS (5/8" I ROD W/ ALUMINUM CAP).
●	SET SEMI-PERMANENT MONUMENT IN ACCORDANCE WITH MISSOURI STANDARDS (1/2" I ROD W/ PLASTIC CAP OR CUT CROSS).
○	SET PERMANENT MONUMENT IN PREVIOUS PLAT.
☆	SET SEMI-PERMANENT MONUMENT IN PREVIOUS PLAT.
□	FOUND PERMANENT MONUMENT
⊙	FOUND SEMI-PERMANENT MONUMENT
+	FOUND CROSS
⬇	FOUND ANCHOR
⬇	BENCHMARK
523	ADDRESS
*	LOT SUBJECT TO STREET CREEP

HATCHING LEGEND:

PUBLIC RIGHT-OF-WAY	
DRAINAGE EASEMENT	
DETENTION BASIN	
DEFEASIBLE ACCESS EASEMENT	

SURVEYOR'S CERTIFICATE:

SEE SHEET 1 OF 16 FOR CERTIFICATION.

THE STERLING COMPANY
MO REG. 307-D

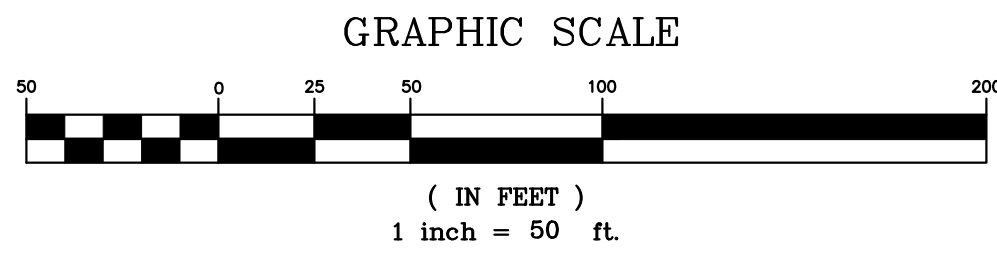
JAMEY A. HENSON, P.L.S. - VICE PRESIDENT
DATE
MO. REG. I.S. #2007017963

SHEET 9 OF 16

HARVEST AT HOPEWELL PLAT ONE-B

MATCH LINE SHEET 8 OF 16

MATCH LINE SHEET 8 OF 16



N/F
CABALLO FARMS INC.
D.B. 2260 P.G. 2016
4-0038-S0007-00-0005.2
& 4-0045-S018-00-0005
GALLOP LN.

FRACTIONAL SECTION 18
FRACTIONAL SECTION 17

N00°33'36"E 1829.52'

FRACTIONAL SECTION 18
FRACTIONAL SECTION 17

EX. 15' ESMT. TO DUCKETT
CREEK SANITARY DISTRICT
DOC. NO. 2023R-039036
[NOT IN TITLE]

PARCEL "N"
[FUTURE DEVELOPMENT AREA]
129.905± ACRES

FND: SQUARE
IRON BAR
(0.11" WEST)

HOPEWELL FARM SUBDIVISION
DOC. # 2020R-103703
LOT A
N/F
DUCKETT CREEK SEWER DISTRICT
DOC. # 2020R-103705
4-0045-D027-00-000A
HOPEWELL RD.

N48°19'28"W 1196.22'

PARCEL "N"
[FUTURE DEVELOPMENT AREA]
129.905± ACRES

PARCEL "N"
[FUTURE DEVELOPMENT AREA]
129.905± ACRES

PARCEL "N"
[FUTURE DEVELOPMENT AREA]
129.905± ACRES

**COMMON
GROUND "O"**
3.593± ACRES
(417)

OAK BARREL DR
EX. 10' PRIVATE SEWER
LATERAL ESMT.
(S78°54'26"E, 23.56')

FUTURE
LOT 804E

FUTURE
LOT 803E

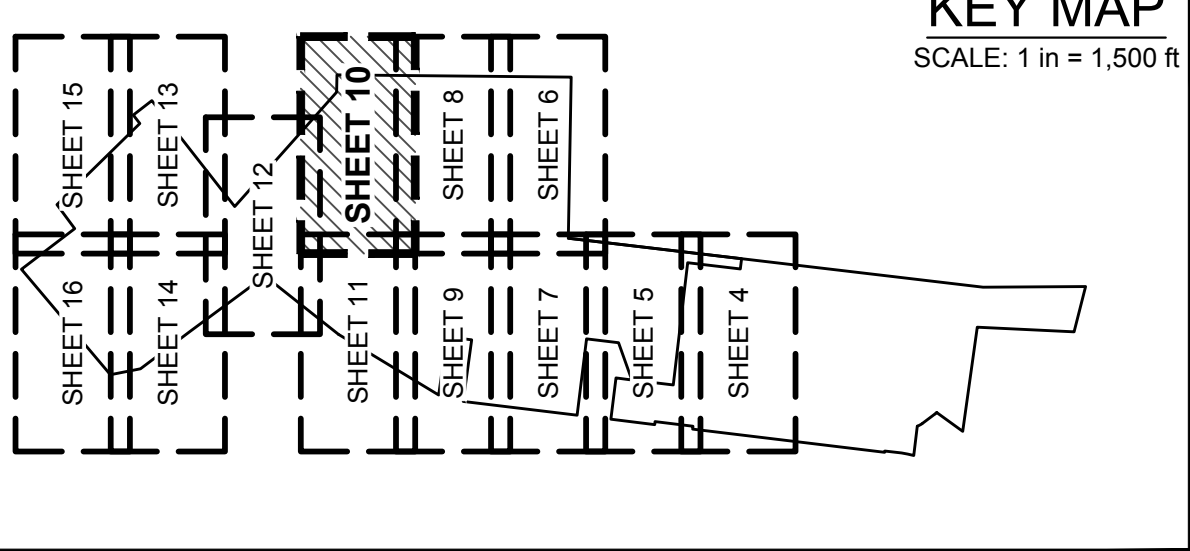
MATCH LINE SHEET 12 OF 16

MATCH LINE SHEET 12 OF 16

THE **STERLING** CO.
ENGINEERS & SURVEYORS

5055 New Baumgartner Road
St. Louis, Missouri 63129
Ph. 314-487-0440 Fax 314-487-8944
www.sterling-eng-sur.com

DRAWN BY:	GFS	MSD P# - N/A
CHECKED BY:	JAH	DATE: JUNE 24, 2024
JOB NO.:	20-09-327	HARVEST AT HOPEWELL



ABBREVIATION LEGEND:

BK. = BOOK
BLDG. = BUILDING
C.G. = COMMON GROUND
CHB = CHORD BEARING
CHD = CHORD DISTANCE
D.B. = DEED BOOK
DRAIN = DRAINAGE
ESMT. = EASEMENT
FND. = FOUND
N/F = NOW OR FORMERLY
(NR) = NON-RADIAL
P.B. = PLAT BOOK
P.O.B. = POINT OF BEGINNING
P.O.C. = POINT OF COMMENCEMENT
P.R.M.E. = PRIVATE ROADWAY MAINTENANCE EASEMENT
P.S.E. = PRIVATE SIDEWALK EASEMENT
P.V.M.T. = PAVEMENT
(R) = RECORD

ABBREVIATION LEGEND:

R.O.W. = RIGHT-OF-WAY
(S) = SURVEYED
S.D.T. = SIGHT DISTANCE TRIANGLE
S.F. = SQUARE FEET
T.S.C.L. = TEMPORARY SLOPE AND CONSTRUCTION LICENSE
W = WIDTH

SYMBOL LEGEND:

▲ = SET PERMANENT MONUMENT IN ACCORDANCE WITH MISSOURI STANDARDS (5/8" I.ROD W/ ALUMINUM CAP).
● = SET SEMI-PERMANENT MONUMENT IN ACCORDANCE WITH MISSOURI STANDARDS. (1/2" I.ROD W/ PLASTIC CAP OR CUT CROSS).
○ = SET PERMANENT MONUMENT IN PREVIOUS PLAT.
⊕ = SET SEMI-PERMANENT MONUMENT IN PREVIOUS PLAT.
□ = FOUND PERMANENT MONUMENT
⊙ = FOUND SEMI-PERMANENT MONUMENT
+ = FOUND CROSS
⊕ = FOUND ANCHOR
⊕ = BENCHMARK
523 = ADDRESS
* = LOT SUBJECT TO STREET CREEP

HATCHING LEGEND:

PUBLIC RIGHT-OF-WAY
DRAINAGE EASEMENT
DETENTION BASIN
DEFEASIBLE ACCESS EASEMENT

SURVEYOR'S CERTIFICATE:

SEE SHEET 1 OF 16 FOR CERTIFICATION.

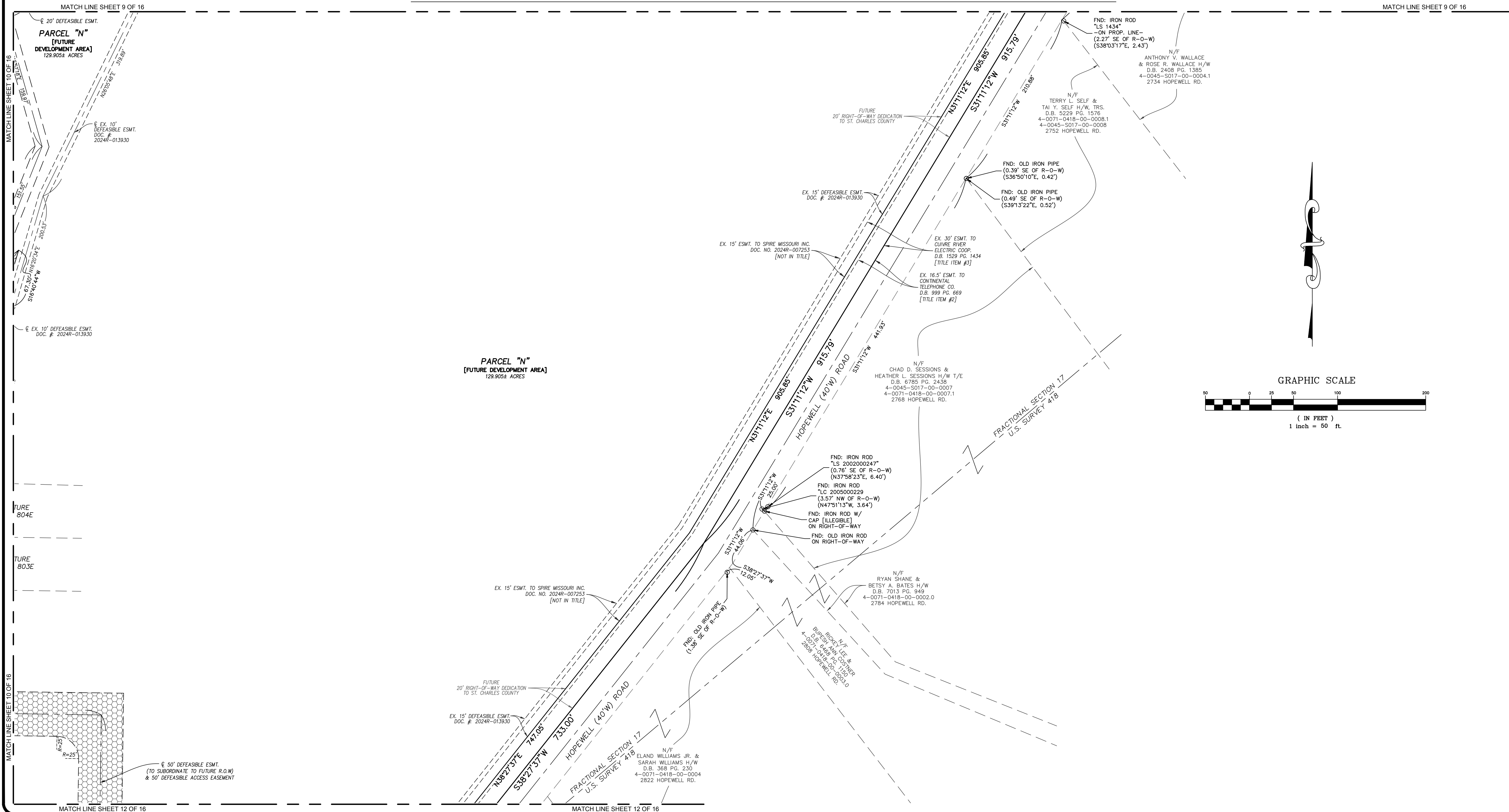
THE STERLING COMPANY
MO REG. 307-D

JAMEY A. HENSON, P.L.S. - VICE PRESIDENT
MO REG. I.S. #2007017963

DATE

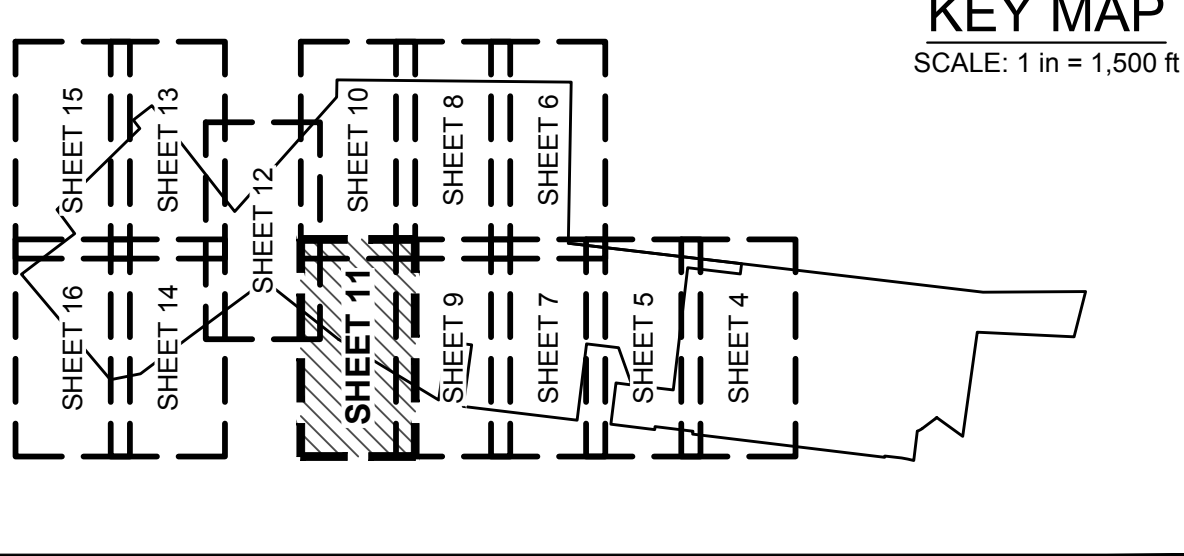
SHEET 10 OF 16

HARVEST AT HOPEWELL PLAT ONE-B



THE **STERLING** CO.
ENGINEERS & SURVEYORS
5055 New Baumgartner Road
St. Louis, Missouri 63129
Ph. 314-487-0440 Fax 314-487-8944
www.sterling-eng-sur.com

DRAWN BY:	GFS	MSD P# - N/A
CHECKED BY:	JAH	DATE: JUNE 24, 2024
JOB NO.:	20-09-327	HARVEST AT HOPEWELL



KEY MAP
SCALE: 1 in = 1,500 ft

ABBREVIATION LEGEND:

BK.	= BOOK
BLDG.	= BUILDING
C.G.	= COMMON GROUND
CHB.	= CHORD BEARING
CHD.	= CHORD DISTANCE
D.B.	= DEED BOOK
DRAIN.	= DRAINAGE
ESMT.	= EASEMENT
FND.	= FOUND
N/F.	= NOW OR FORMERLY
(NR)	= NON-RADIAL
P.B.	= PLAT BOOK
P.O.B.	= POINT OF BEGINNING
P.O.C.	= POINT OF COMMENCEMENT
P.R.M.E.	= PRIVATE ROADWAY MAINTENANCE EASEMENT
P.S.E.	= PRIVATE SIDEWALK EASEMENT
P.V.M.T.	= PAVEMENT
(R)	= RECORD

ABBREVIATION LEGEND:

R.O.W.	= RIGHT-OF-WAY
(S)	= SURVEYED
S.D.T.	= SIGHT DISTANCE TRIANGLE
S.F.	= SQUARE FEET
T.S.C.L.	= TEMPORARY SLOPE AND CONSTRUCTION LICENSE
W	= WIDTH

SYMBOL LEGEND:

▲	= SET PERMANENT MONUMENT IN ACCORDANCE WITH MISSOURI STANDARDS (5/8" I ROD W/ ALUMINUM CAP).
●	= SET SEMI-PERMANENT MONUMENT IN ACCORDANCE WITH MISSOURI STANDARDS. (1/2" I ROD W/ PLASTIC CAP OR CUT CROSS).
○	= SET PERMANENT MONUMENT IN PREVIOUS PLAT.
☆	= SET SEMI-PERMANENT MONUMENT IN PREVIOUS PLAT.
□	= FOUND PERMANENT MONUMENT
⊙	= FOUND SEMI-PERMANENT MONUMENT
+	= FOUND CROSS
⬇	= FOUND ANCHOR
⊕	= BENCHMARK
523	= ADDRESS
*	= LOT SUBJECT TO STREET CREEP

HATCHING LEGEND:

PUBLIC RIGHT-OF-WAY	=	[Hatched Pattern]
DRAINAGE EASEMENT	=	[Hatched Pattern]
DETENTION BASIN	=	[Hatched Pattern]
DEFEASIBLE ACCESS EASEMENT	=	[Hatched Pattern]

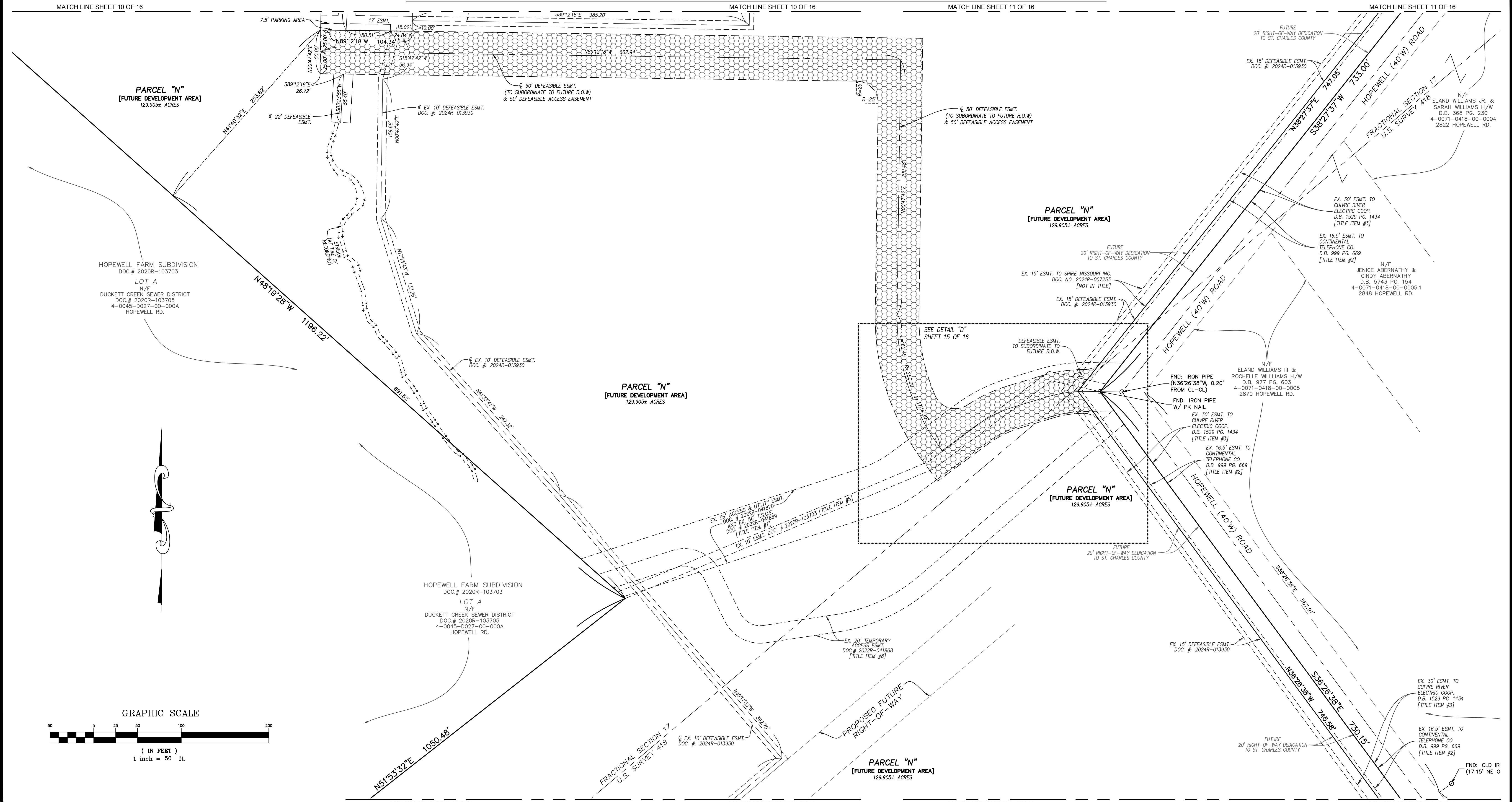
SURVEYOR'S CERTIFICATE:

SEE SHEET 1 OF 16 FOR CERTIFICATION.

THE STERLING COMPANY
MO REG. 307-D

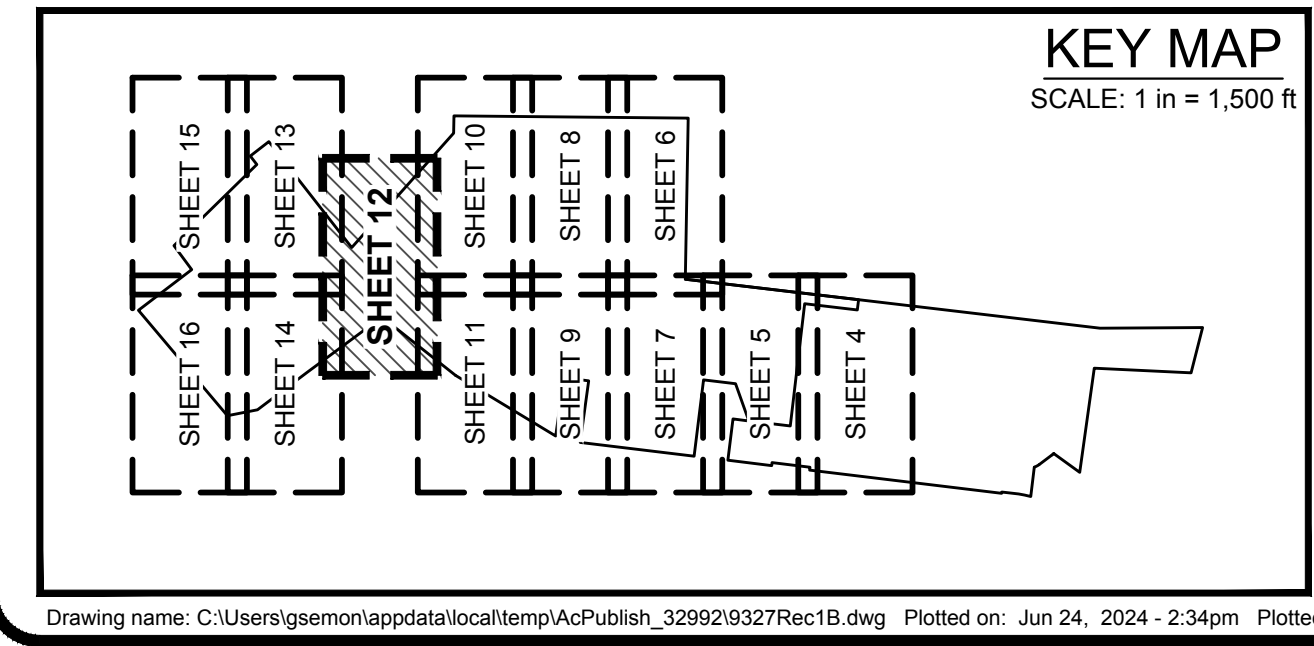
JAMEY A. HENSON, P.L.S. - VICE PRESIDENT DATE
MO. REG. I.S. #2007017963

HARVEST AT HOPEWELL PLAT ONE-B



THE STERLING CO.
ENGINEERS & SURVEYORS
5055 New Baumgartner Road
St. Louis, Missouri 63129
Ph. 314-487-0440 Fax 314-487-8944
www.sterling-eng-sur.com

DRAWN BY:	GFS	MSD P# - N/A
CHECKED BY:	JAH	DATE: JUNE 24, 2024
JOB NO.:	20-09-327	HARVEST AT HOPEWELL



- ABBREVIATION LEGEND:**
- | | |
|----------|--------------------------------------|
| BK. | BOOK |
| BLDG. | BUILDING |
| C.G. | COMMON GROUND |
| CHB. | CHORD BEARING |
| CHD. | CHORD DISTANCE |
| D.B. | DEED BOOK |
| DRAIN. | DRAINAGE |
| ESMT. | EASEMENT |
| FND. | FOUND |
| N/F. | NOW OR FORMERLY |
| (NR) | NON-RADIAL |
| P.B. | PLAT BOOK |
| P.O.B. | POINT OF BEGINNING |
| P.O.C. | POINT OF COMMENCEMENT |
| P.R.M.E. | PRIVATE ROADWAY MAINTENANCE EASEMENT |
| P.S.E. | PRIVATE SIDEWALK EASEMENT |
| P.V.M.T. | PAVEMENT |
| (R) | RECORD |

- ABBREVIATION LEGEND:**
- | | |
|----------|--|
| R.O.W. | RIGHT-OF-WAY |
| (S) | SURVEYED |
| S.D.T. | SIGHT DISTANCE TRIANGLE |
| S.F. | SQUARE FEET |
| T.S.C.L. | TEMPORARY SLOPE AND CONSTRUCTION LICENSE |
| W | WIDTH |

- SYMBOL LEGEND:**
- | | |
|-----|---|
| ▲ | SET PERMANENT MONUMENT IN ACCORDANCE WITH MISSOURI STANDARDS (5/8" I.R.O.D W/ ALUMINUM CAP). |
| ● | SET SEMI-PERMANENT MONUMENT IN ACCORDANCE WITH MISSOURI STANDARDS (1/2" I.R.O.D W/ PLASTIC CAP OR CUT CROSS). |
| ○ | SET PERMANENT MONUMENT IN PREVIOUS PLAT. |
| ☆ | SET SEMI-PERMANENT MONUMENT IN PREVIOUS PLAT. |
| □ | FOUND PERMANENT MONUMENT |
| ⊙ | FOUND SEMI-PERMANENT MONUMENT |
| + | FOUND CROSS |
| ⬇ | FOUND ANCHOR |
| ⊕ | BENCHMARK |
| 523 | ADDRESS |
| * | LOT SUBJECT TO STREET CREEP |

- HATCHING LEGEND:**
- | | |
|----------------------------|--|
| PUBLIC RIGHT-OF-WAY | |
| DRAINAGE EASEMENT | |
| DETENTION BASIN | |
| DEFEASIBLE ACCESS EASEMENT | |

SURVEYOR'S CERTIFICATE:

SEE SHEET 1 OF 16 FOR CERTIFICATION.

THE STERLING COMPANY
MO REG. 307-D

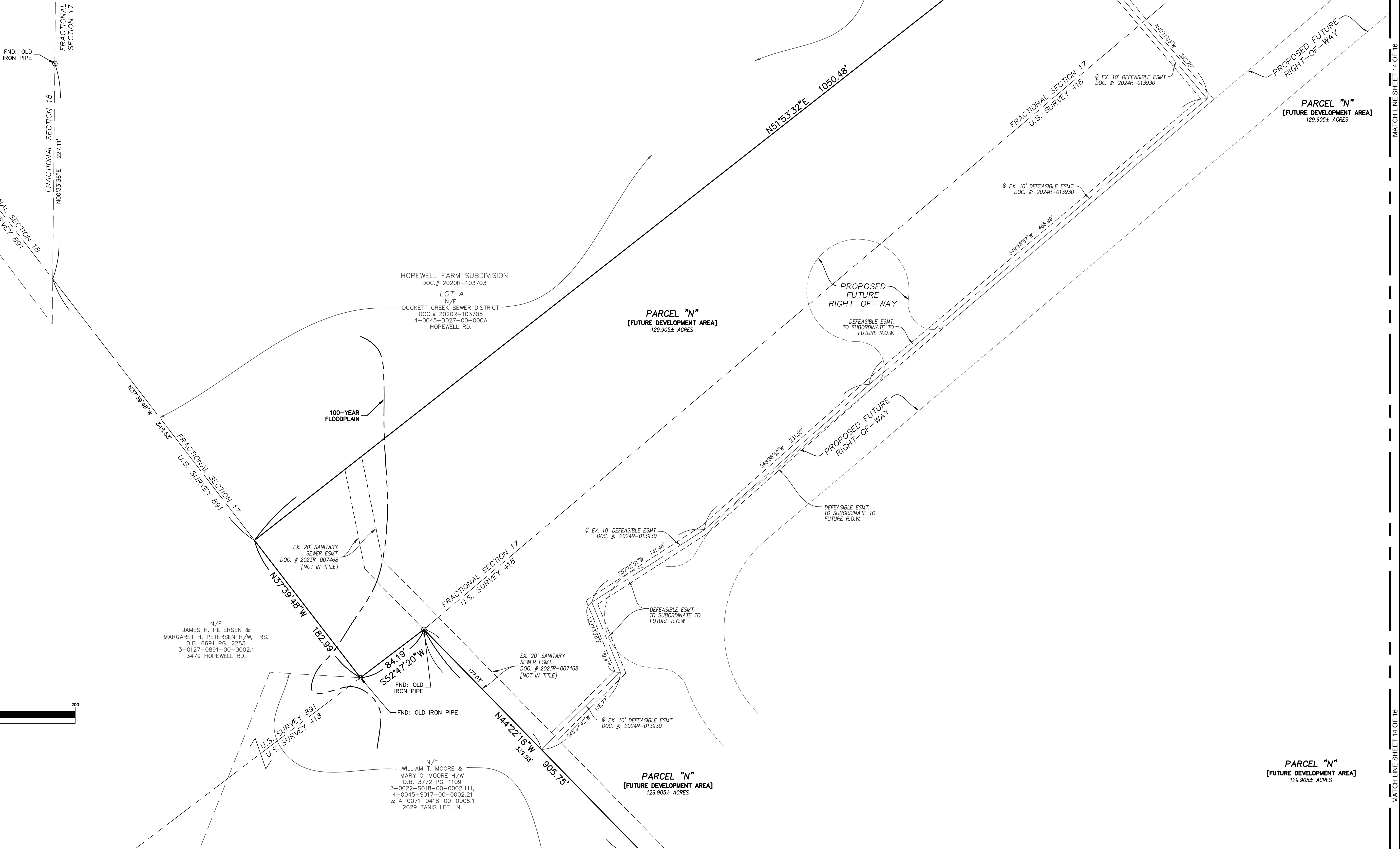
JAMEY A. HENSON, P.L.S. - VICE PRESIDENT DATE
MO. REG. I.S. #2007017963

SHEET 12 OF 16

HARVEST AT HOPEWELL PLAT ONE-B

MATCH LINE SHEET 12 OF 16

MATCH LINE SHEET 12 OF 16



GRAPHIC SCALE



(IN FEET)
1 inch = 50 ft.

MATCH LINE SHEET 15 OF 16

MATCH LINE SHEET 15 OF 16

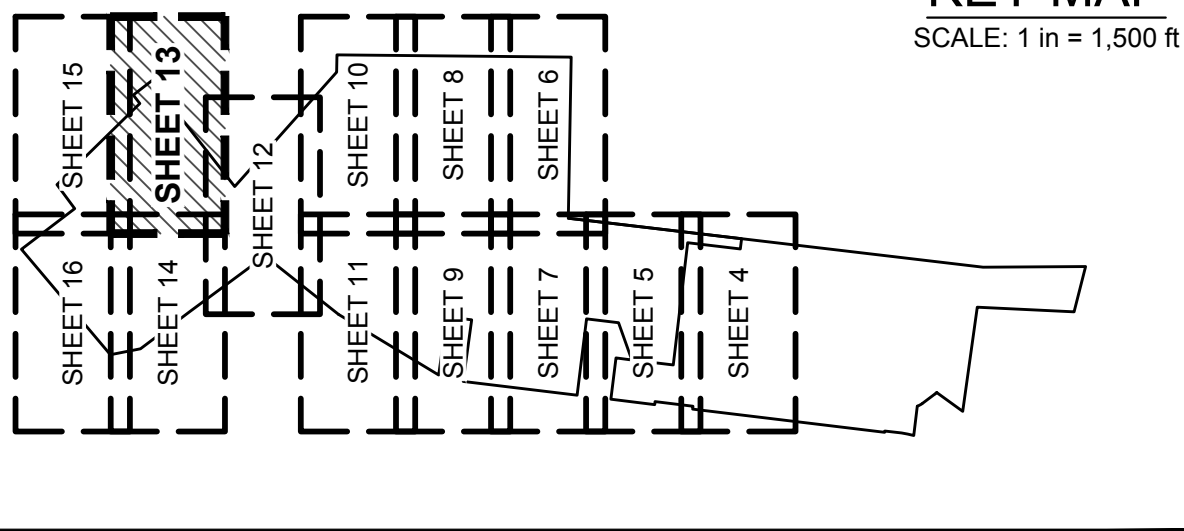
THE **STERLING** CO.
ENGINEERS & SURVEYORS

5055 New Baumgartner Road
St. Louis, Missouri 63129
Ph. 314-487-0440 Fax 314-487-8944
www.sterling-eng-sur.com

DRAWN BY:	GFS	MSD P# - N/A
CHECKED BY:	JAH	DATE: JUNE 24, 2024
JOB NO.:	20-09-327	HARVEST AT HOPEWELL

KEY MAP

SCALE: 1 in = 1,500 ft.



ABBREVIATION LEGEND:

BK.	= BOOK
BLDG.	= BUILDING
C.G.	= COMMON GROUND
CHB	= CHORD BEARING
CHD	= CHORD DISTANCE
D.B.	= DEED BOOK
DRAIN	= DRAINAGE
ESMT.	= EASEMENT
FND.	= FOUND
N/F	= NOW OR FORMERLY
(NR)	= NON-RADIAL
P.B.	= PLAT BOOK
P.O.B.	= POINT OF BEGINNING
P.O.C.	= POINT OF COMMENCEMENT
P.R.M.E.	= PRIVATE ROADWAY MAINTENANCE EASEMENT
P.S.E.	= PRIVATE SIDEWALK EASEMENT
PVMT.	= PAVEMENT
(R)	= RECORD

ABBREVIATION LEGEND:

R.O.W.	= RIGHT-OF-WAY
(S)	= SURVEYED
S.D.T.	= SIGHT DISTANCE TRIANGLE
S.F.	= SQUARE FEET
T.S.C.L.	= TEMPORARY SLOPE AND CONSTRUCTION LICENSE
W	= WIDTH

SYMBOL LEGEND:

▲	= SET PERMANENT MONUMENT IN ACCORDANCE WITH MISSOURI STANDARDS (5/8" I.ROD W/ ALUMINUM CAP).
●	= SET SEMI-PERMANENT MONUMENT IN ACCORDANCE WITH MISSOURI STANDARDS. (1/2" I.ROD W/ PLASTIC CAP OR CUT CROSS).
○	= SET PERMANENT MONUMENT IN PREVIOUS PLAT.
☆	= SET SEMI-PERMANENT MONUMENT IN PREVIOUS PLAT.
□	= FOUND PERMANENT MONUMENT
⊙	= FOUND SEMI-PERMANENT MONUMENT
+	= FOUND CROSS
⬇	= FOUND ANCHOR
⊕	= BENCHMARK
523	= ADDRESS
*	= LOT SUBJECT TO STREET CREEP

HATCHING LEGEND:

PUBLIC RIGHT-OF-WAY	=	
DRAINAGE EASEMENT	=	
DETENTION BASIN	=	
DEFEASIBLE ACCESS EASEMENT	=	

SURVEYOR'S CERTIFICATE:

SEE SHEET 1 OF 16 FOR CERTIFICATION.

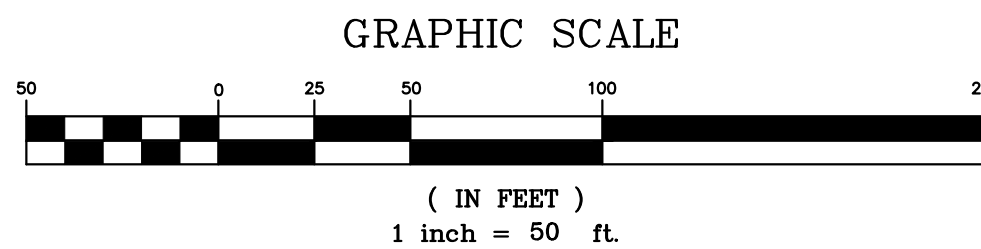
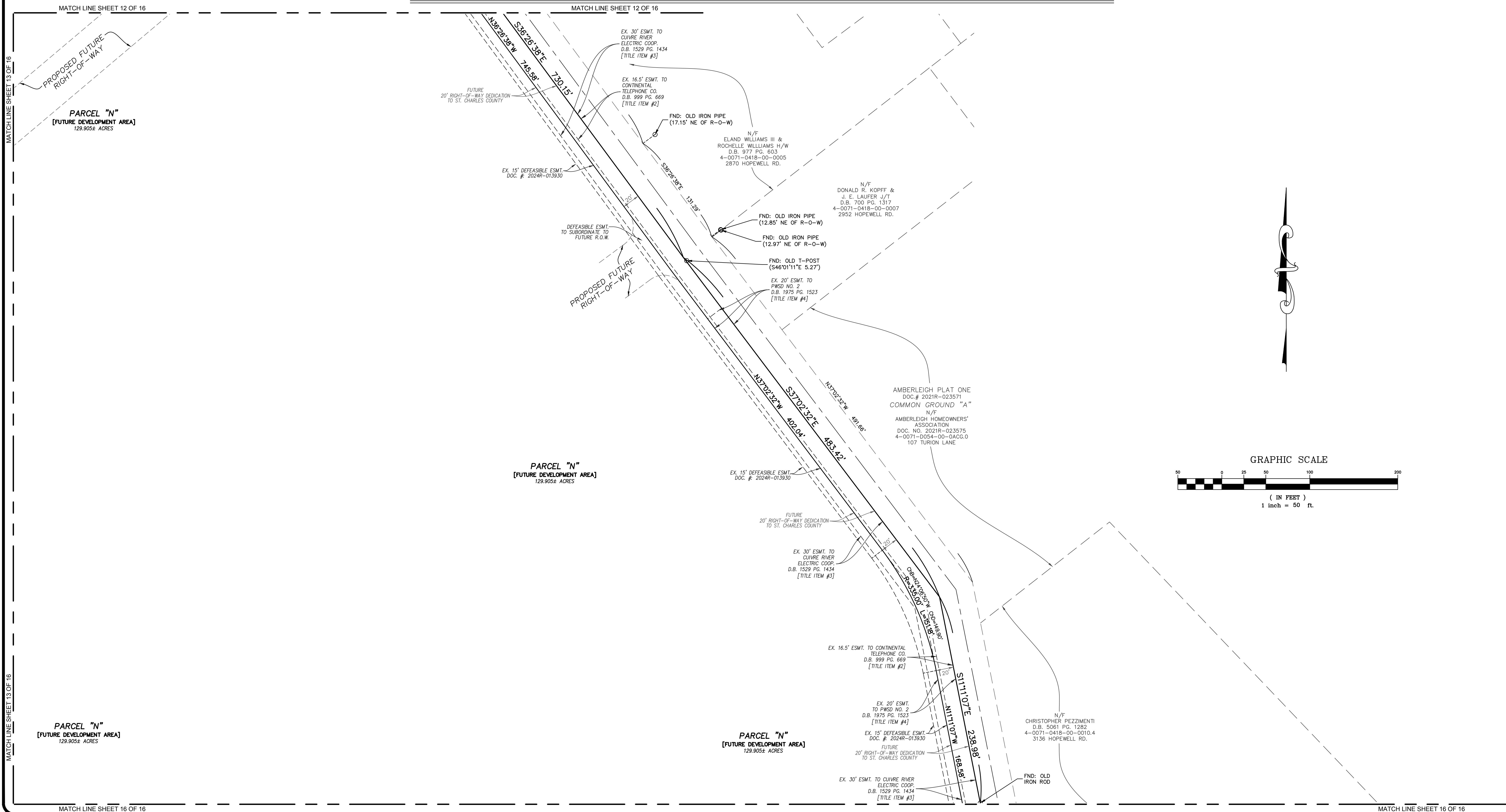
THE STERLING COMPANY
MO REG. 307-D

JAMEY A. HENSON, P.L.S. - VICE PRESIDENT
MO. REG. I.S. #2007017963

DATE

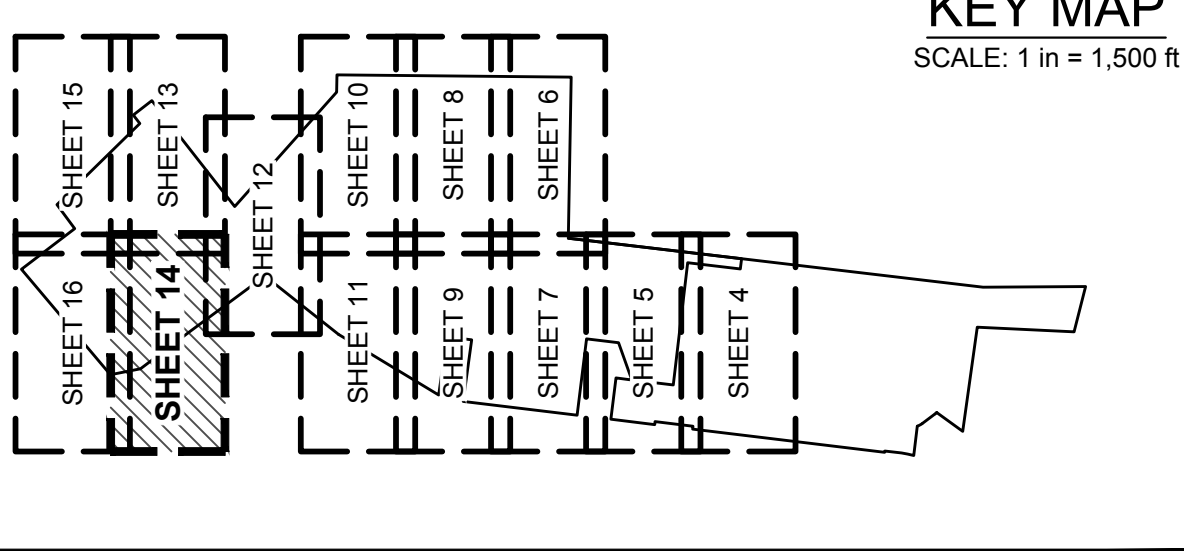
SHEET 13 OF 16

HARVEST AT HOPEWELL PLAT ONE-B



THE **STERLING** CO.
ENGINEERS & SURVEYORS
5055 New Baumgartner Road
St. Louis, Missouri 63129
Ph. 314-487-0440 Fax 314-487-8944
www.sterling-eng-sur.com

DRAWN BY:	GFS	MSD P# - N/A
CHECKED BY:	JAH	DATE: JUNE 24, 2024
JOB NO.:	20-09-327	HARVEST AT HOPEWELL



ABBREVIATION LEGEND:

BK.	=	BOOK
BLDG.	=	BUILDING
C.G.	=	COMMON GROUND
CHB	=	CHORD BEARING
CHD	=	CHORD DISTANCE
D.B.	=	DEED BOOK
DRAIN	=	DRAINAGE
ESMT.	=	EASEMENT
FND.	=	FOUND
N/F	=	NOW OR FORMERLY
(NR)	=	NON-RADIAL
P.B.	=	PLAT BOOK
P.O.B	=	POINT OF BEGINNING
P.O.C.	=	POINT OF COMMENCEMENT
P.R.M.E.	=	PRIVATE ROADWAY MAINTENANCE EASEMENT
P.S.E.	=	PRIVATE SIDEWALK EASEMENT
P.V.M.T.	=	PAVEMENT
(R)	=	RECORD

ABBREVIATION LEGEND:

R.O.W.	=	RIGHT-OF-WAY
(S)	=	SURVEYED
S.D.T.	=	SIGHT DISTANCE TRIANGLE
S.F.	=	SQUARE FEET
T.S.C.L.	=	TEMPORARY SLOPE AND CONSTRUCTION LICENSE
W	=	WIDTH

SYMBOL LEGEND:

▲	=	SET PERMANENT MONUMENT IN ACCORDANCE WITH MISSOURI STANDARDS (5/8" I ROD W/ ALUMINUM CAP).
●	=	SET SEMI-PERMANENT MONUMENT IN ACCORDANCE WITH MISSOURI STANDARDS. (1/2" I.ROD W/ PLASTIC CAP OR CUT CROSS).
○	=	SET PERMANENT MONUMENT IN PREVIOUS PLAT.
☆	=	SET SEMI-PERMANENT MONUMENT IN PREVIOUS PLAT.
□	=	FOUND PERMANENT MONUMENT
⊙	=	FOUND SEMI-PERMANENT MONUMENT
+	=	FOUND CROSS
⊕	=	FOUND ANCHOR
⊗	=	BENCHMARK
523	=	ADDRESS
*	=	LOT SUBJECT TO STREET CREEP

HATCHING LEGEND:

PUBLIC RIGHT-OF-WAY	=	
DRAINAGE EASEMENT	=	
DETENTION BASIN	=	
DEFEASIBLE ACCESS EASEMENT	=	

SURVEYOR'S CERTIFICATE:

SEE SHEET 1 OF 16 FOR CERTIFICATION.

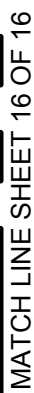
THE STERLING COMPANY
MO REG. 307-D

JAMEY A. HENSON, P.L.S. - VICE PRESIDENT
MO. REG. I.S. #2007017963

DATE

MATCH LINE SHEET 13 OF 16

MATCH LINE SHEET 13 OF 16



MATCH LINE SHEET 16 OF 16

KEY MAP
SCALE: 1 in = 1,500 ft




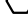




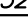


The key map shows a grid of 16 sheets, labeled SHEET 4 through SHEET 16. The sheets are arranged in a 4x4 grid. A large, irregular, white-shaded area is overlaid on the grid, representing the project area. The area covers most of the grid, with some sheets (SHEET 15, SHEET 16, SHEET 13, SHEET 14, SHEET 11, SHEET 12) partially or fully within the shaded area. The sheets are labeled as follows:

- SHEET 15 (top-left, hatched)
- SHEET 16 (top-left, hatched)
- SHEET 13 (top-left, hatched)
- SHEET 14 (top-left, hatched)
- SHEET 11 (top-left, hatched)
- SHEET 12 (top-left, hatched)
- SHEET 10 (top-left, hatched)
- SHEET 8 (top-left, hatched)
- SHEET 6 (top-left, hatched)
- SHEET 9 (top-left, hatched)
- SHEET 7 (top-left, hatched)
- SHEET 5 (top-left, hatched)
- SHEET 4 (top-left, hatched)

Drawing name: C:\Users\gsemon\appdata\local\temp\AcPublish_32992\9327\Rec1B.dwg Plotted on: Jun 24, 2024 - 2:34pm Plotted by: gsemon

- ### ABBREVIATION LEGEND:
- | | | |
|----------|---|--------------------------------------|
| BLK. | = | BOOK |
| BUD. | = | BUILDING |
| C.G. | = | COMMON GROUND |
| CHB | = | CHORD BEARING |
| CHD | = | CHORD DISTANCE |
| D.B. | = | DEED BOOK |
| DRAIN. | = | DRAINAGE |
| ESMT. | = | EASEMENT |
| FND. | = | FOUND |
| NIF | = | NOW OR FORMERLY |
| (NR) | = | NON-RADIAL |
| P.B. | = | PLAT BOOK |
| P.O.B | = | POINT OF BEGINNING |
| P.O.C. | = | POINT OF COMMENCEMENT |
| P.R.M.E. | = | PRIVATE ROADWAY MAINTENANCE EASEMENT |
| P.R.E. | = | PRIVATE SIDEWALK EASEMENT |
| PWMT | = | PAVEMENT |
| (R) | = | RECORD |

- ABBREVIATION LEGEND:**
- | | | |
|----------|---|--|
| R.O.W. | = | RIGHT-OF-WAY |
| (S) | = | SURVEYED |
| S.D.T. | = | SIGHT DISTANCE TRIANGLE |
| S.F. | = | SQUARE FEET |
| T.S.C.L. | = | TEMPORARY SLOPE AND CONSTRUCTION LICENSE |
| W | = | WIDTH |

- ### SYMBOL LEGEND:
- | | |
|---|---|
|  | = SET PERMANENT MONUMENT IN ACCORDANCE WITH MISSOURI STANDARDS (5/8" I ROD W/ ALUMINUM CAP). |
|  | = SET SEMI- PERMANENT MONUMENT IN ACCORDANCE WITH MISSOURI STANDARDS. (1/2" I ROD W/ PLASTIC CAP OR CUT CROSS). |
|  | = SET PERMANENT MONUMENT IN PREVIOUS PLAT. |
|  | = SET SEMI-PERMANENT MONUMENT IN PREVIOUS PLAT. |
|  | = FOUND PERMANENT MONUMENT |
|  | = FOUND SEMI-PERMANENT MONUMENT |
|  | = FOUND CROSS |
|  | = FOUND ANCHOR |
|  | = BENCHMARK |
|  | = ADDRESS |
|  | = LOT SUBJECT TO STREET CREEP |

- ### HATCHING LEGEND:
- | | | |
|----------------------------|---|--|
| PUBLIC RIGHT-OF-WAY | = | |
| DRAINAGE EASEMENT | = | |
| DETENTION BASIN | = | |
| DEFEASIBLE ACCESS EASEMENT | = | |

- SURVEYOR'S CERTIFICATE:
- SEE SHEET 1 OF 16 FOR CERTIFICATION.
- THE STERLING COMPANY
MO REG. 307-D
- JAMEY A. HENSON, P.L.S. - VICE PRESIDENT DATE
MO. REG. L.S. #2007017963
- SHEET 15 OF 16*

