

HARVEST AT HOPEWELL PLAT TWO

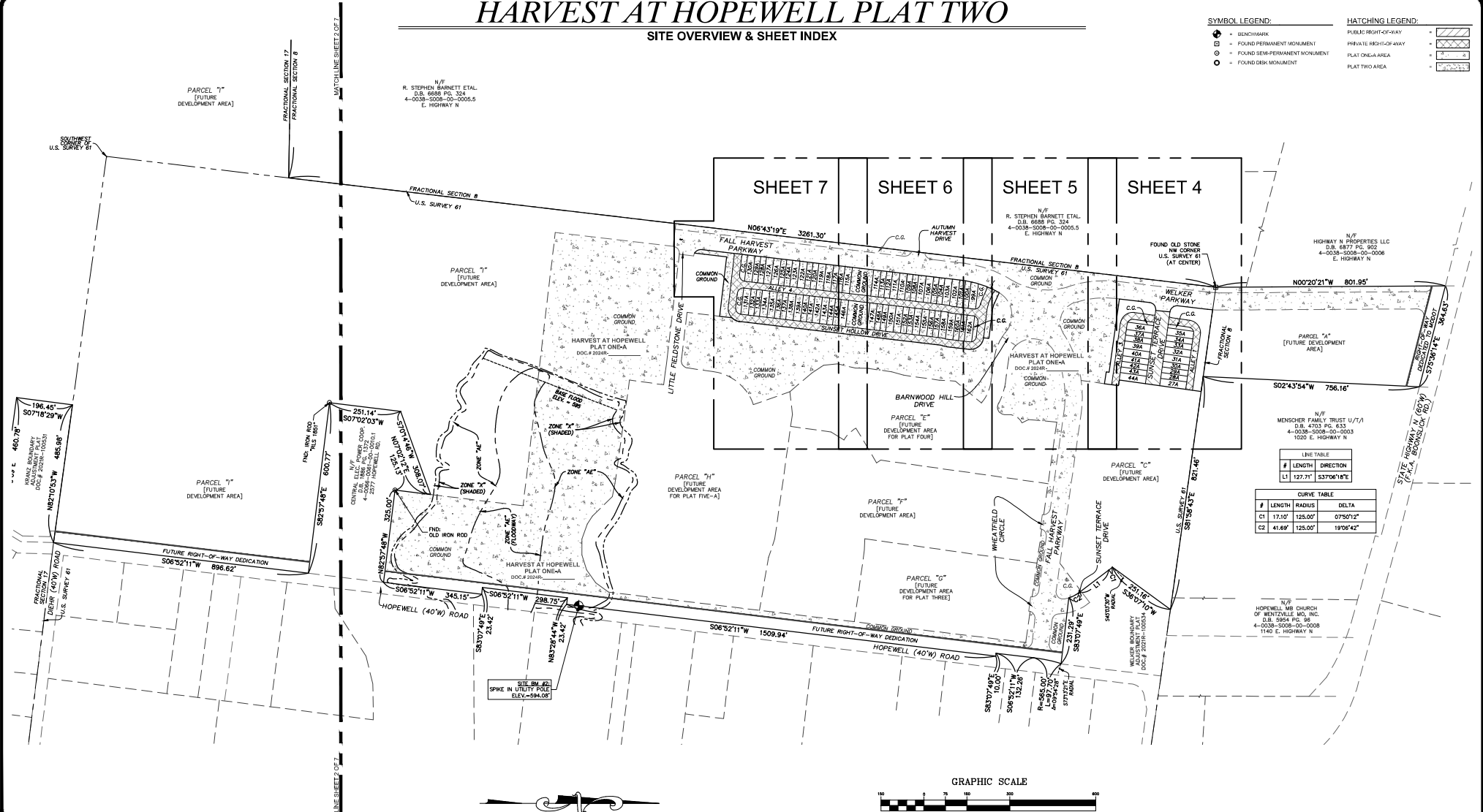
SITE OVERVIEW & SHEET INDEX

SYMBOL LEGEND:

- BENCHMARK
- FOUND PERMANENT MONUMENT
- FOUND SEMI-PERMANENT MONUMENT
- FOUND DISK MONUMENT

HATCHING LEGEND:

- PUBLIC RIGHT-OF-WAY
- PRIVATE RIGHT-OF-WAY
- PLAT ONE-A AREA
- PLAT TWO-A AREA

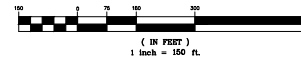


| LINE TABLE | | |
|------------|---------|-------------|
| # | LENGTH | DIRECTION |
| 1 | 127.71' | S37°06'19"E |

| CURVE TABLE | | |
|-------------|--------|---------|
| # | LENGTH | RADIUS |
| C1 | 17.10' | 125.00' |
| C2 | 41.69' | 125.00' |

| CURVE TABLE | | |
|-------------|--------|---------|
| # | LENGTH | RADIUS |
| C1 | 17.10' | 125.00' |
| C2 | 41.69' | 125.00' |

GRAPHIC SCALE



STERLING CO.

ENGINEERS & SURVEYORS

5055 New Baumgartner Road
St. Louis, Missouri 63129
Ph. 314-487-2040 Fax 314-487-4844
www.sterling-eng-sur.com

| | | |
|-------------|-----------|---------------------|
| DRAWN BY: | GFS | MSD P# - N/A |
| CHECKED BY: | JAH | DATE: MAR 20, 2024 |
| JOB NO.: | 20-09-327 | HARVEST AT HOPEWELL |

SURVEYOR'S CERTIFICATE:

SEE SHEET 1 OF 7 FOR CERTIFICATION.

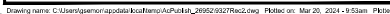
THE STERLING COMPANY
MO REG. 30742

JANEY A. HENSON, P.L.S. - VICE PRESIDENT
MO REG. L.S. 9200191963

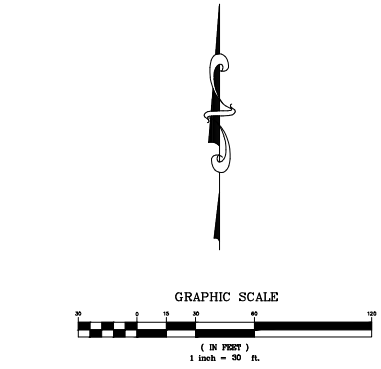
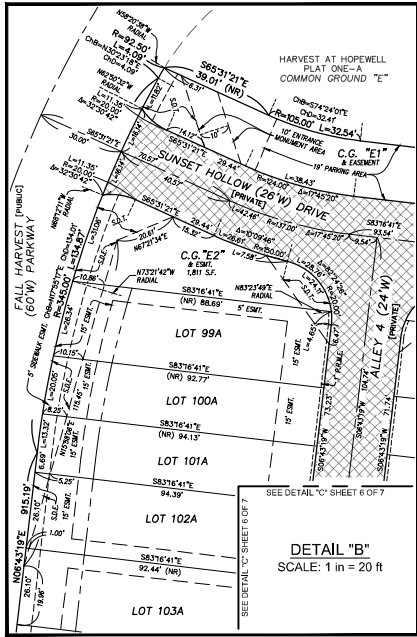
DATE

SHEET 3 OF 7

Drawing name: C:\Users\jasonr\appdata\local\temp\AsP\Plot_20240320\Harvest2.dwg Plotted on: Mar 20, 2024 9:53am Plotted by: gfs

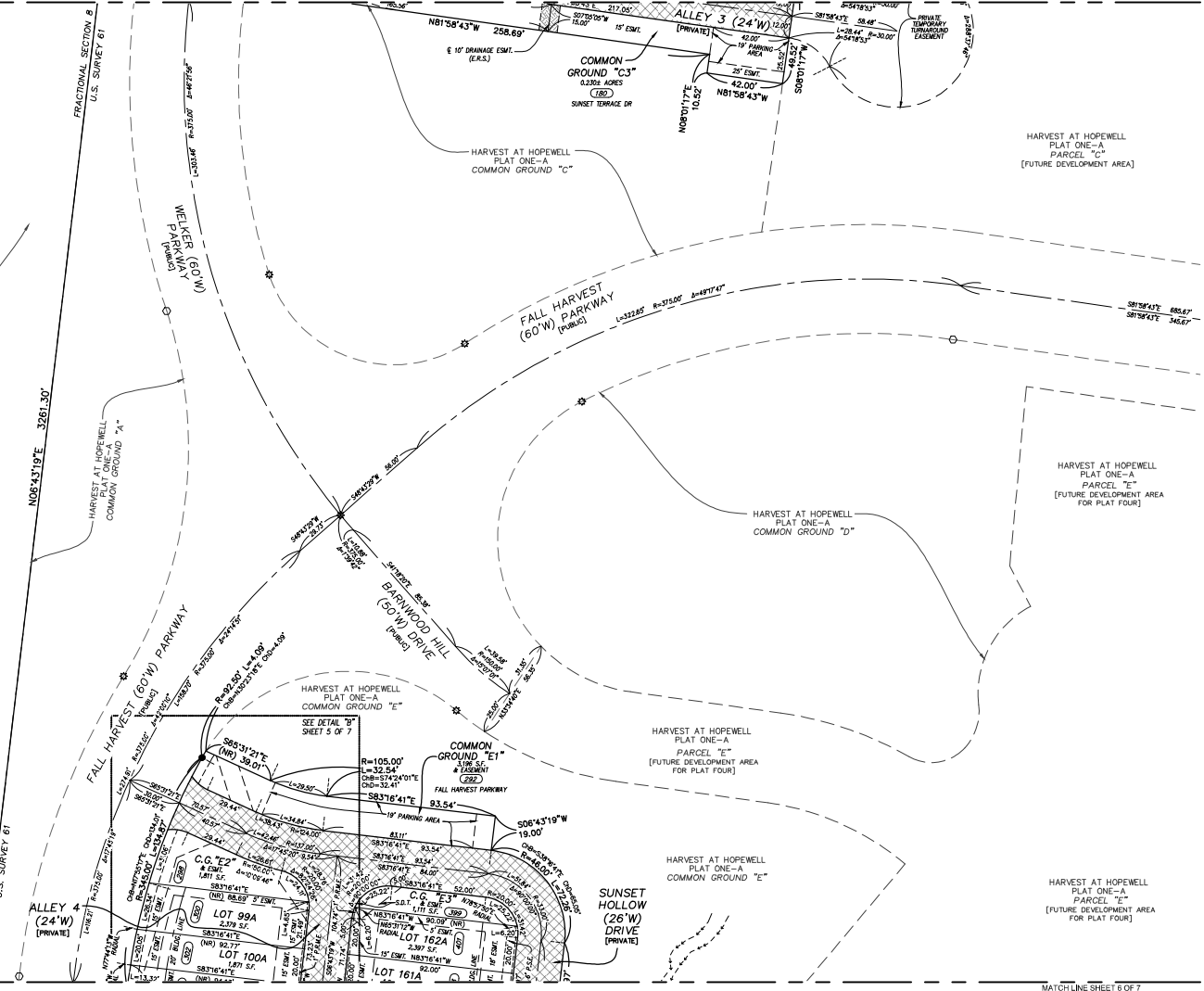
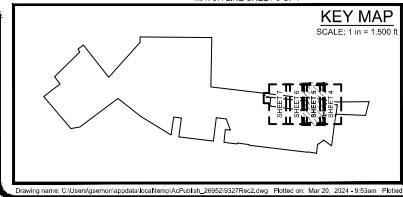


HARVEST AT HOPEWELL PLAT TWO



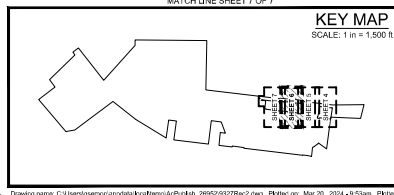
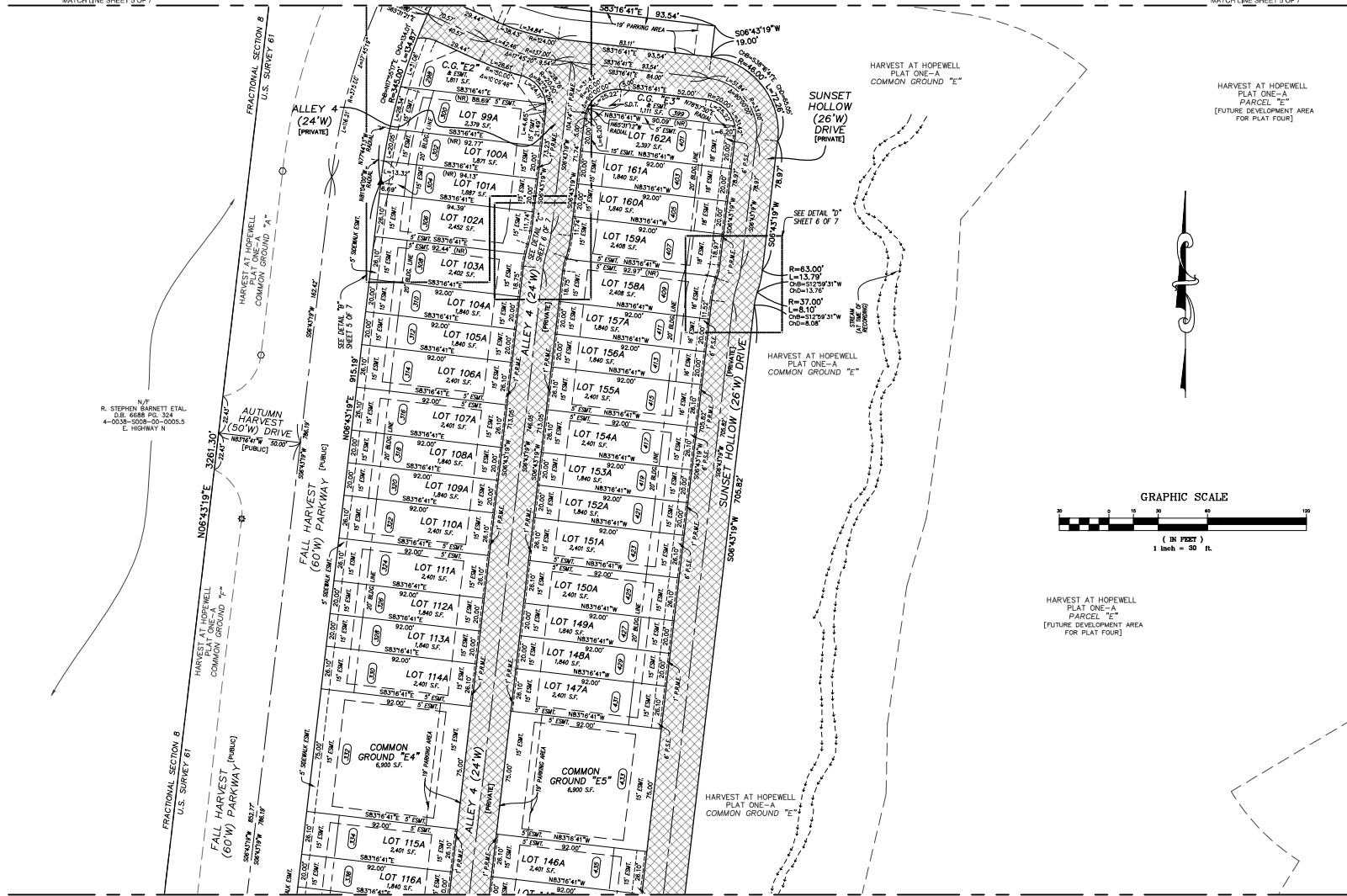
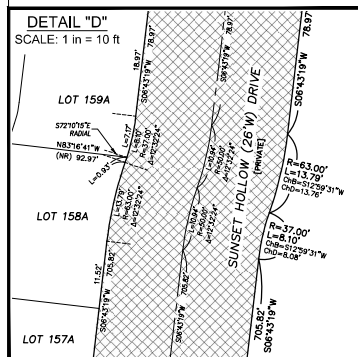
THE STERLING CO.
ENGINEERS & SURVEYORS
5585 New Baumgartner Road
St. Louis, Missouri 63129
Ph. 314-487-2040 Fax 314-487-4844
www.sterling-eng-sur.com

| | | |
|-------------|-----------|---------------------|
| DRAWN BY: | GFS | MSD P# - N/A |
| CHECKED BY: | JAH | DATE: MAR. 20, 2024 |
| JOB NO.: | 20-09-327 | HARVEST AT HOPEWELL |



| | | | | |
|--|--|--|---|---|
| <p>ABBREVIATION LEGEND:</p> <ul style="list-style-type: none"> BL. = BOOK BLDG. = BUILDING C.G. = COMMON GROUND COR. = CORNER CHORD BEARING CHORD DISTANCE D.B. = DEED BOOK DRM. = DRAINAGE E.R.S. = EMERGENCY RELIEF SWALE FAS. = FASSETT FND. = FOUND F.S.M. = FOUND INF. = NOW OR FORMERLY INT. = INTERIOR PL. = PLAT BOOK P.O.B. = POINT OF BEGINNING P.O.C. = POINT OF COMMENCEMENT P.A.M. = PRIVATE ROADWAY MAINTENANCE EASEMENT P.S.E. = PRIVATE EASEMENT P.M.T. = PAVEMENT R. = RECORD | <p>ABBREVIATION LEGEND:</p> <ul style="list-style-type: none"> R.O.W. = RIGHT-OF-WAY (S) = SURVEYED S.D.T. = RIGHT DISTANCE TRIANGLE S.F. = SQUARE FOOT T.B.C. = TEMPORARY EASEMENT AND CONSTRUCTION LICENSE W. = WIDTH | <p>SYMBOL LEGEND:</p> <ul style="list-style-type: none"> ▲ = SET PERMANENT MONUMENT IN ACCORDANCE WITH MISSOURI STANDARDS (SPL. LOCK W/ ALUMINUM CAPS) ● = SET SEMI-PERMANENT MONUMENT IN ACCORDANCE WITH MISSOURI STANDARDS (1/2" LOCK W/ PLASTIC CAP OR CUT CROSS) ○ = SET SEMI-PERMANENT MONUMENT IN PREVIOUS PLAT. □ = FOUND PERMANENT MONUMENT ⊗ = FOUND SEMI-PERMANENT MONUMENT ⊕ = FOUND CROSS ⊙ = FOUND MEASUR ⊙ = BRANCHMARK ⊙ = ADDRESS ⊙ = LOT SUBJECT TO STREET CREEP | <p>HATCHING LEGEND:</p> <ul style="list-style-type: none"> Public Right-of-Way Private Right-of-Way Drainage Easement <p>GENERAL NOTES:</p> <ol style="list-style-type: none"> ALL PRIVATE RIGHT-OF-WAYS ARE TO BE MAINTAINED BY THE HOPEWELL HOMEOWNERS ASSOCIATION, THEIR SUCCESSORS AND ASSIGNS. | <p>SURVEYOR'S CERTIFICATE:</p> <p>SEE SHEET 1 OF 7 FOR CERTIFICATION.</p> <p>THE STERLING COMPANY NO. REG. 30742</p> <p>JANEY A. HENSON, P.L.S. - VICE PRESIDENT NO. REG. L.S. 202011963</p> <p>DATE: _____ SHEET 5 OF 7</p> |
|--|--|--|---|---|

MATCH LINE SHEET 5 OF 7



THE STERLING CO.
ENGINEERS & SURVEYORS
5055 New Baumgartner Road
St. Louis, Missouri 63129
Ph. 314-487-0440 Fax 314-487-8944
www.sterling-eng-sur.com

| | | |
|-------------|-----------|------------------------|
| DRAWN BY: | GFS | MSD P# - N/A |
| CHECKED BY: | JAH | DATE: MAR. 20, 2024 |
| JOB NO.: | 20-09-327 | HARVEST AT HOPEWELL |

KEY MAP
SCALE: 1 in = 1,500 ft

ABBREVIATION LEGEND

| | | |
|----------|---|--------------------------------------|
| BK. | = | BOOK |
| BLDG. | = | BUILDING |
| C.G. | = | COMMON GROUND |
| CHB | = | CHORD BEARING |
| CHD | = | CHORD DISTANCE |
| D.B. | = | DEED BOOK |
| DRAIN | = | DRAINAGE |
| E.R.S. | = | EMERGENCY RELIEF SWALE |
| ESMT. | = | EASEMENT |
| FND. | = | FOUND |
| NP | = | NOW OR FORMERLY |
| NRJ | = | NON-RESIDENTIAL |
| P.B. | = | PLAT BOOK |
| P.O.B. | = | POINT OF BEGINNING |
| P.O.C. | = | POINT OF COMMENCEMENT |
| P.R.M.E. | = | PRIVATE ROADWAY MAINTENANCE EASEMENT |
| P.S.E. | = | PRIVATE SIDEWALK EASEMENT |
| P.V.M.T. | = | PAVEMENT |
| R. | = | RECORD |




ABBREVIATION LEGEND:

R.O.V. = RIGHT-OF-WAY
(S) = SURVEYED
S.D.T. = SIGHT DISTANCE TRIANGLE
S.F. = SQUARE FEET
T.S.C.L. = TEMPORARY SLOPE AND CONSTRUCTION LICENSE
"W" = WIDTH

SYMBOL LEGEND:

- ▲ = SET PERMANENT MONUMENT IN ACCORDANCE WITH MISSOURI STANDARDS (5/8" UNOD W/ ALUMINUM CAP).
- = SET SEMI-PERMANENT MONUMENT IN ACCORDANCE WITH MISSOURI STANDARDS (1/2" UNOD W/ PLASTIC CAP OR CROSS).
- = SET PERMANENT MONUMENT IN PREVIOUS PLAT.
- ⚙ = SET SEMI-PERMANENT MONUMENT IN PREVIOUS PLAT.
- = FOUND PERMANENT MONUMENT
- ⊙ = FOUND SEMI-PERMANENT MONUMENT
- ✚ = FOUND CROSS
- ⚓ = FOUND ANCHOR
- ⬮ = BENCHMARK
- ⑤21 = ADDRESS
- ★ = LOT SUBJECT TO STREET CREEP

HATCHING LEGEND:

| | | |
|----------------------|---|---|
| PUBLIC RIGHT-OF-WAY | = |  |
| PRIVATE RIGHT-OF-WAY | = |  |
| DRAINAGE EASEMENT | = |  |

GENERAL NOTES:

- ALL PRIVATE RIGHT-OF-WAYS ARE TO BE MAINTAINED BY THE HOPEWELL HOMEOWNERS' ASSOCIATION, THEIR SUCCESSORS AND ASSIGNS.

SURVEYOR'S CERTIFICATE:

SEE SHEET 1 OF 7 FOR CERTIFICATION.

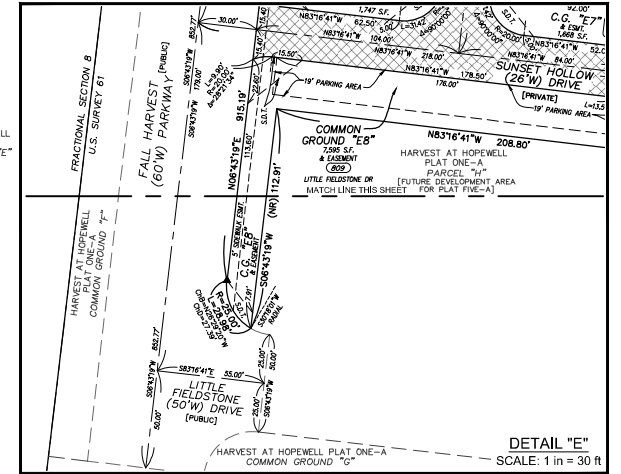
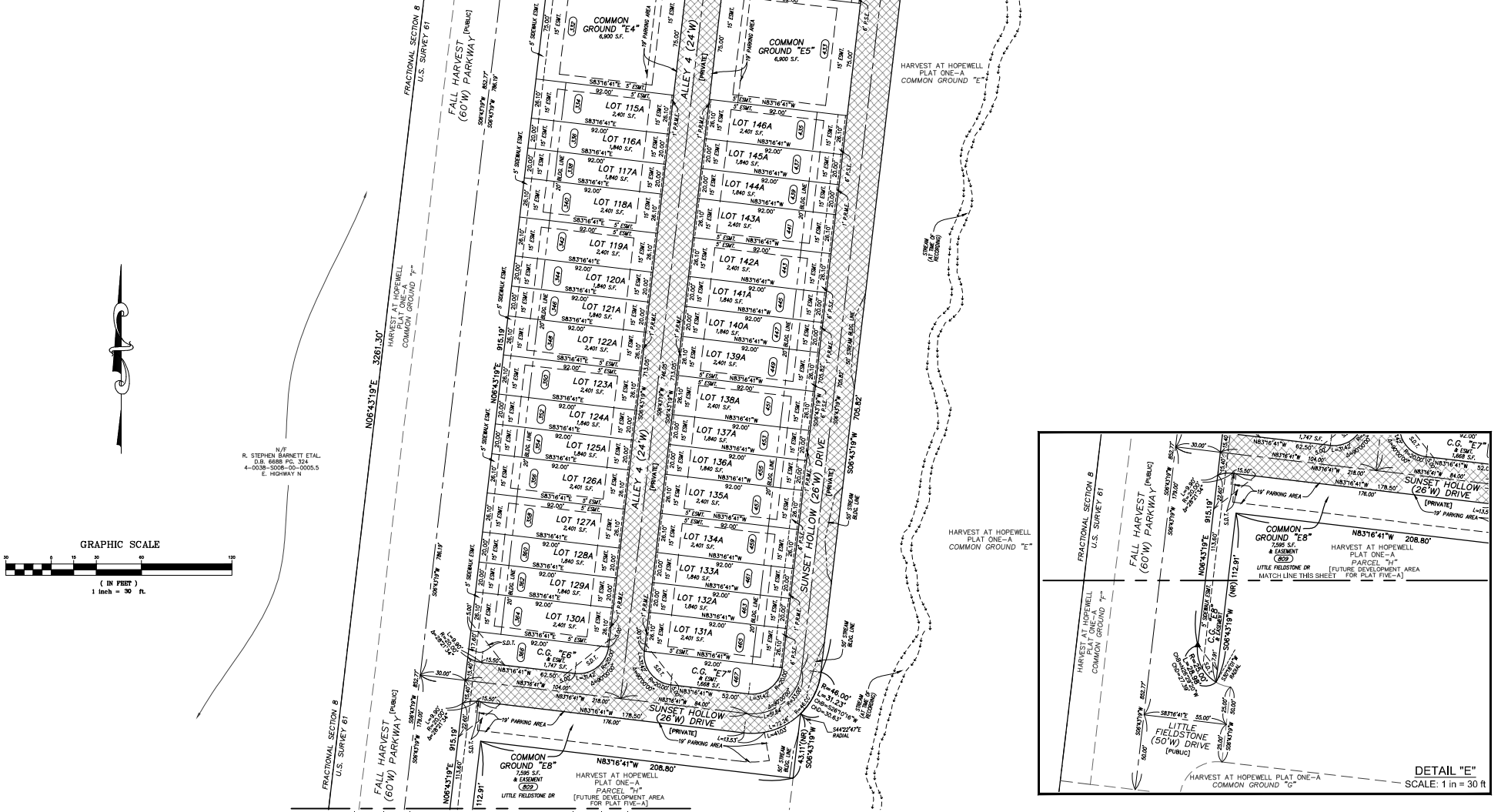
THE STERLING COMPANY
MO REG. 387-D

JANEY A. HENSON, P.L.S. - VICE PRESIDENT DATE
MO. REG. L.S. #2007017963

HARVEST AT HOPEWELL PLAT TWO

MATCH LINE SHEET 6 OF 7

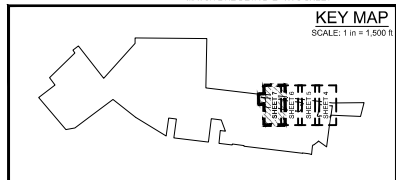
MATCH LINE SHEET 6 OF 7



THE STERLING CO.
ENGINEERS & SURVEYORS

5555 New Baumgartner Road
St. Louis, Missouri 63129
Ph. 314-487-2040 Fax 314-487-4844
www.sterling-eng-survey.com

| | | |
|-------------|-----------|---------------------|
| DRAWN BY: | GFS | MSD P# - N/A |
| CHECKED BY: | JAH | DATE: MAR. 20, 2024 |
| JOB NO.: | 20-09-327 | HARVEST AT HOPEWELL |



ABBREVIATION LEGEND:

BL. = BOOK
BLDG. = BUILDING
C.G. = COMMON GROUND
CHD. = CHORD BEARING
C.D. = CHORD DISTANCE
D.B. = DEED BOOK
D.M. = DRAINAGE
E.R.S. = EMERGENCY RELIEF SWALE
F.A. = FASSETT
F.D. = FOUND
F.M. = FOUND FORMERLY
F.P. = FOUND PLAT BOOK
F.O.B. = POINT OF BEGINNING
F.O.C. = POINT OF COMMENCEMENT
F.M.E. = PRIVATE ROADWAY MAINTENANCE EASEMENT
F.M.T. = FASSETT
F.M.T. = FASSETT
F.M.T. = FASSETT
F.M.T. = FASSETT

ABBREVIATION LEGEND:

R.O.W. = RIGHT-OF-WAY
S. = SURVEYED
S.D.T. = RIGHT DISTANCE TRIANGLE
S.F. = SQUARE FEET
T.C.L. = TEMPORARY SLOPE AND CONSTRUCTION LICENSE
W. = WIDTH

SYMBOL LEGEND:

▲ = SET PERMANENT MONUMENT IN ACCORDANCE WITH MEASURE STANDARDS (S.F. LINED W/ ALUMINUM CAPS)
● = SET SEMI-PERMANENT MONUMENT IN ACCORDANCE WITH MEASURE STANDARDS (S.F. LINED W/ PLASTIC CAP OR CUT CROSS)
○ = SET PERMANENT MONUMENT IN PREVIOUS PLAT.
○ = SET SEMI-PERMANENT MONUMENT IN PREVIOUS PLAT.
○ = FOUND PERMANENT MONUMENT
○ = FOUND SEMI-PERMANENT MONUMENT
○ = FOUND CORNER
○ = FOUND INCHOR
○ = BRANCHMARK
○ = ADDRESS
○ = LOT SUBJECT TO STREET CREEP

HATCHING LEGEND:

PUBLIC RIGHT-OF-WAY
PRIVATE RIGHT-OF-WAY
DRAINAGE EASEMENT
GENERAL NOTES:
1. ALL PRIVATE RIGHT-OF-WAYS ARE TO BE MAINTAINED BY THE HOPEWELL HOMEOWNERS ASSOCIATION, THEIR SUCCESSORS AND ASSIGNS.

SURVEYOR'S CERTIFICATE:

SEE SHEET 1 OF 7 FOR CERTIFICATION.
THE STERLING COMPANY
NO. REG. 30720
JANEY A. HENSON, P.L.S. - VICE PRESIDENT
NO. REG. L.S. 2201911963
DATE
SHEET 7 OF 7