



# HARVEST AT HOPEWELL PLAT FOUR

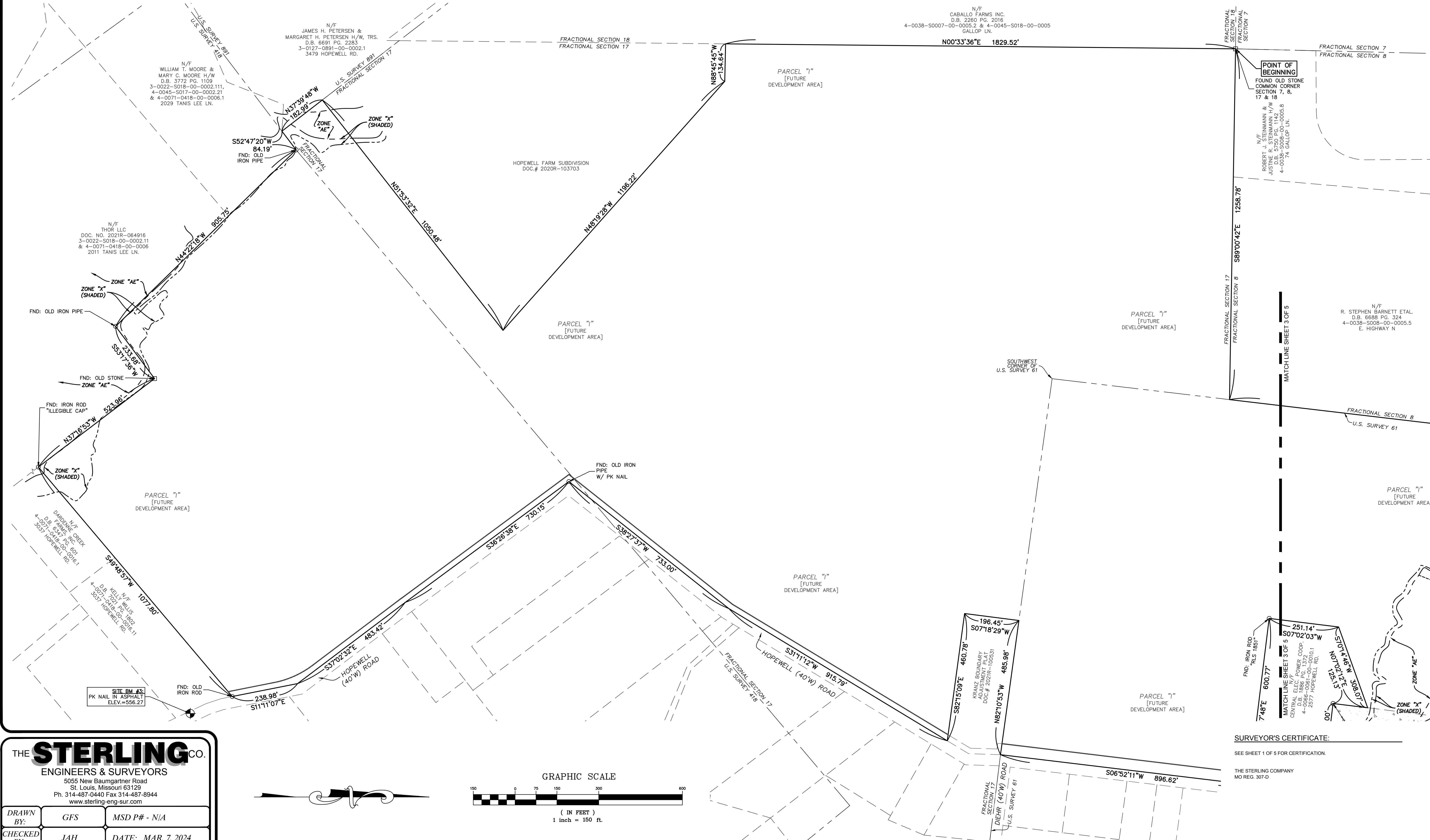
## SITE OVERVIEW & SHEET INDEX

### SYMBOL LEGEND:

- BENCHMARK
- FOUND PERMANENT MONUMENT
- FOUND SEMI-PERMANENT MONUMENT
- FOUND DISK MONUMENT

### HATCHING LEGEND:

- PUBLIC RIGHT-OF-WAY
- PLAT ONE-A AREA
- PLAT FOUR AREA



**THE STERLING CO.**  
ENGINEERS & SURVEYORS  
5055 New Baumgartner Road  
St. Louis, Missouri 63129  
Ph. 314-487-0440 Fax 314-487-8944  
www.sterling-eng-sur.com

DRAWN BY:	GFS	MSD P# - N/A
CHECKED BY:	JAH	DATE: MAR. 7, 2024
JOB NO.:	20-09-327	HARVEST AT HOPEWELL



**SURVEYOR'S CERTIFICATE:**  
SEE SHEET 1 OF 5 FOR CERTIFICATION.  
THE STERLING COMPANY  
MO REG. 307-D  
JAMEY A. HENSON, P.L.S. - VICE PRESIDENT  
MO REG. I.S. #2007017963  
DATE  
SHEET 2 OF 5



# HARVEST AT HOPEWELL PLAT FOUR

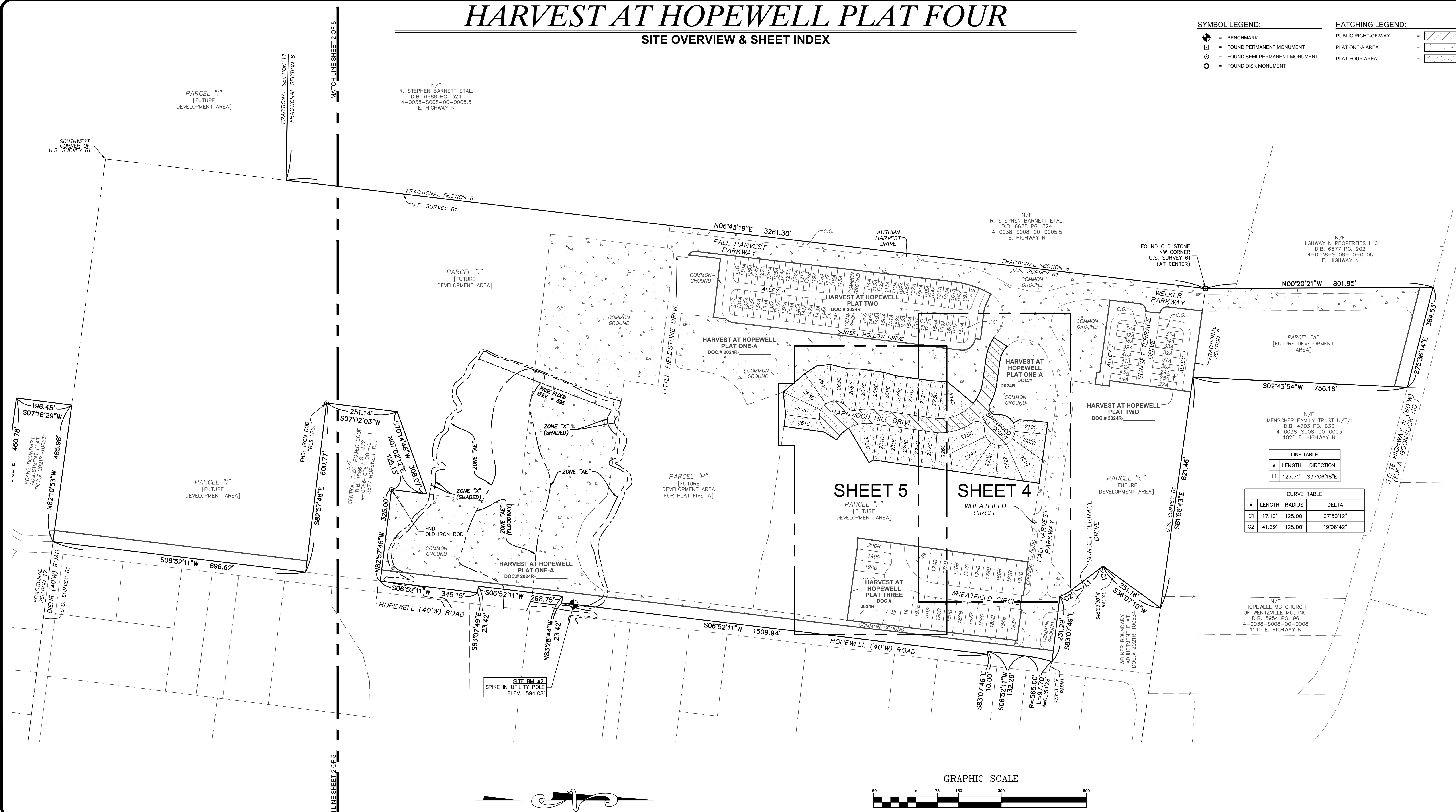
## SITE OVERVIEW & SHEET INDEX

### SYMBOL LEGEND:

- BENCHMARK
- FOUND PERMANENT MONUMENT
- FOUND SEMI-PERMANENT MONUMENT
- FOUND DISK MONUMENT

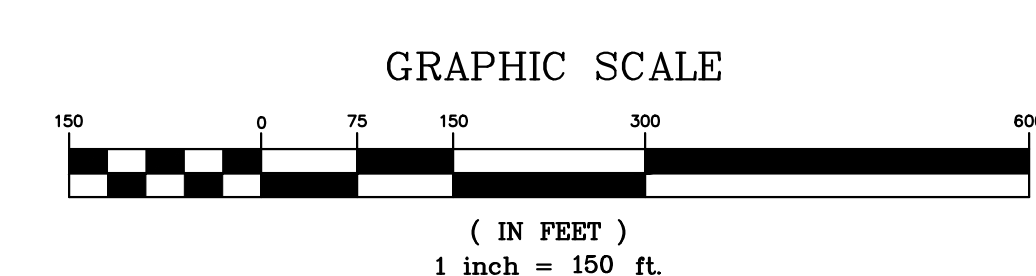
### HATCHING LEGEND:

- PUBLIC RIGHT-OF-WAY
- PLAT ONE-A AREA
- PLAT FOUR AREA



LINE TABLE		
#	LENGTH	DIRECTION
L1	127.71'	S37°06'18"E

CURVE TABLE			
#	LENGTH	RADIUS	DELTA
C1	17.10'	125.00'	07°50'12"
C2	41.69'	125.00'	19°06'42"



**THE STERLING CO.**  
ENGINEERS & SURVEYORS  
5055 New Baumgartner Road  
St. Louis, Missouri 63129  
Ph. 314-487-0440 Fax 314-487-8944  
www.sterling-eng-sur.com

DRAWN BY:	GFS	MSD P# - N/A
CHECKED BY:	JAH	DATE: MAR. 7, 2024
JOB NO.:	20-09-327	HARVEST AT HOPEWELL

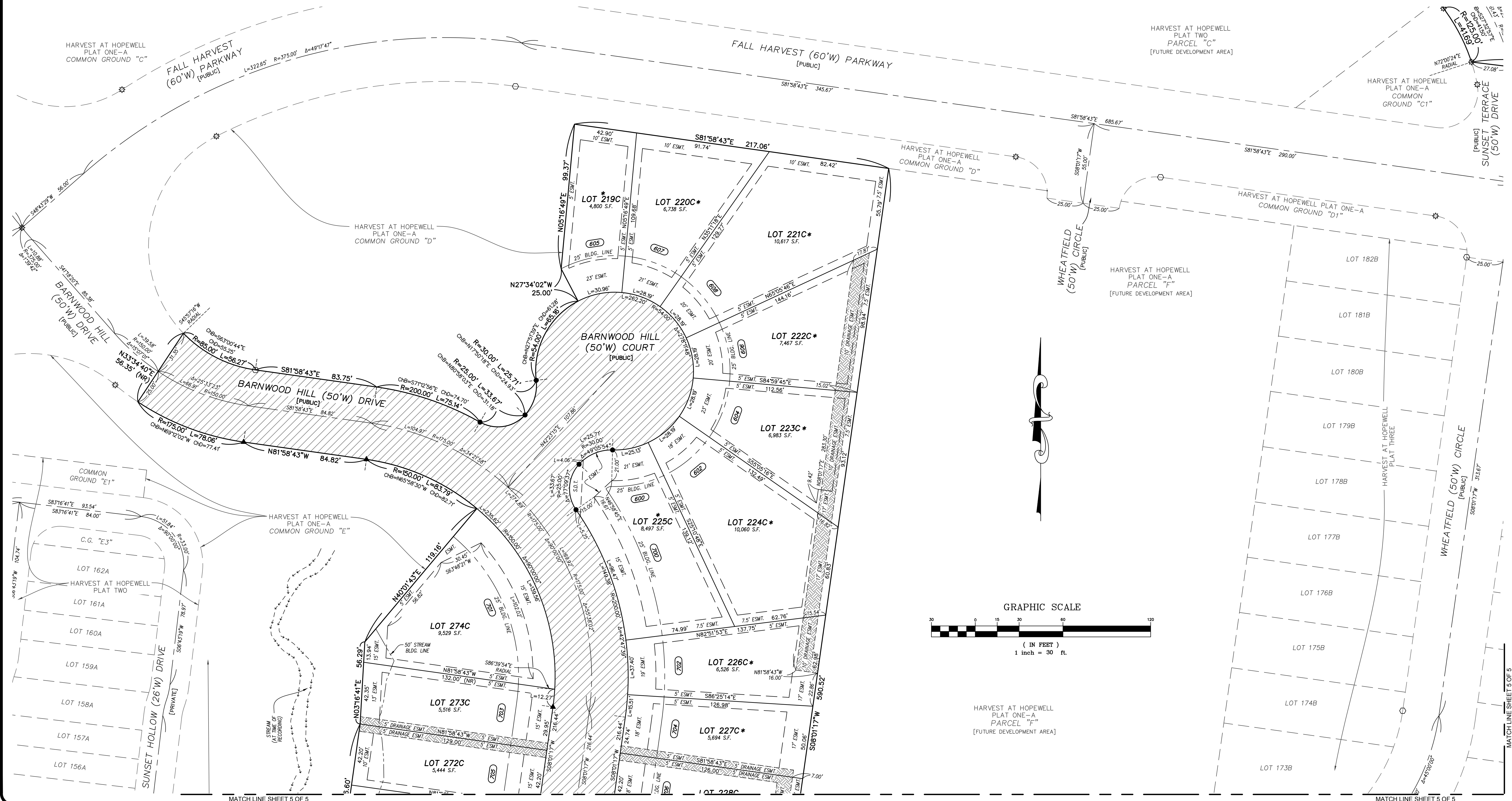
**SURVEYOR'S CERTIFICATE:**  
SEE SHEET 1 OF 5 FOR CERTIFICATION.

THE STERLING COMPANY  
MO REG. 307-D

JAMEY A. HENSON, P.L.S. - VICE PRESIDENT DATE  
MO. REG. I.S. #200717963

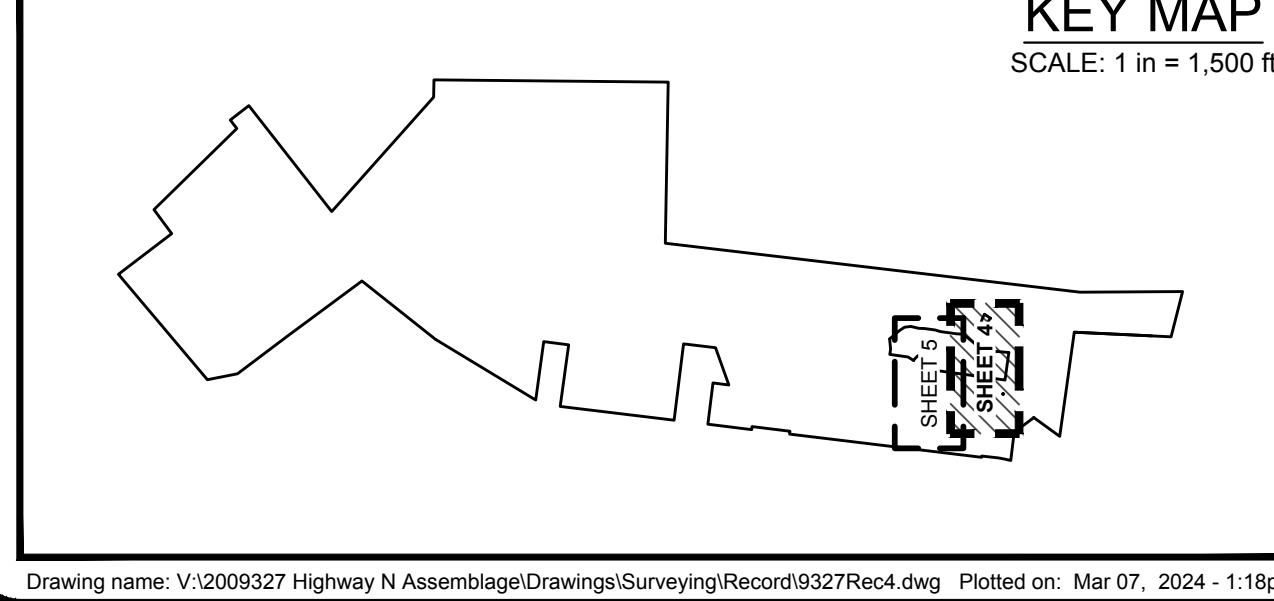
**SHEET 3 OF 5**

# HARVEST AT HOPEWELL PLAT FOUR



**THE STERLING CO.**  
ENGINEERS & SURVEYORS  
5055 New Baumgartner Road  
St. Louis, Missouri 63129  
Ph. 314-487-0440 Fax 314-487-8944  
www.sterling-eng-sur.com

DRAWN BY:	GFS	MSD P# - N/A
CHECKED BY:	JAH	DATE: MAR. 7, 2024
JOB NO.:	20-09-327	HARVEST AT HOPEWELL



- ABBREVIATION LEGEND:**
- BK. = BOOK
  - BLDG. = BUILDING
  - C.G. = COMMON GROUND
  - CHB = CHORD BEARING
  - CHD = CHORD DISTANCE
  - D.B. = DEED BOOK
  - DRAIN = DRAINAGE
  - ESMT. = EASEMENT
  - FND. = FOUND
  - NF = NOW OR FORMERLY
  - (NR) = NON-RADIAL
  - P.B. = PLAT BOOK
  - P.O.B. = POINT OF BEGINNING
  - P.O.C. = POINT OF COMMENCEMENT
  - P.R.M.E. = PRIVATE ROADWAY MAINTENANCE EASEMENT
  - P.S.E. = PRIVATE SIDEWALK EASEMENT
  - P.V.M.T. = PAVEMENT
  - (R) = RECORD

- ABBREVIATION LEGEND:**
- R.O.W. = RIGHT-OF-WAY
  - (S) = SURVEYED
  - S.D.T. = SIGHT DISTANCE TRIANGLE
  - S.F. = SQUARE FEET
  - T.S.C.L. = TEMPORARY SLOPE AND CONSTRUCTION LICENSE
  - W = WIDTH

- SYMBOL LEGEND:**
- ▲ = SET PERMANENT MONUMENT IN ACCORDANCE WITH MISSOURI STANDARDS (5/8" I ROD W/ ALUMINUM CAP).
  - = SET SEMI-PERMANENT MONUMENT IN ACCORDANCE WITH MISSOURI STANDARDS (1/2" I ROD W/ PLASTIC CAP OR CUT CROSS).
  - = SET PERMANENT MONUMENT IN PREVIOUS PLAT.
  - ☆ = SET SEMI-PERMANENT MONUMENT IN PREVIOUS PLAT.
  - = FOUND PERMANENT MONUMENT
  - ⊙ = FOUND SEMI-PERMANENT MONUMENT
  - ⊕ = FOUND CROSS
  - ⊙ = FOUND ANCHOR
  - ⊙ = BENCHMARK
  - 523 = ADDRESS
  - \* = LOT SUBJECT TO STREET CREEP

- HATCHING LEGEND:**
- PUBLIC RIGHT-OF-WAY
  - DRAINAGE EASEMENT

**SURVEYOR'S CERTIFICATE:**

SEE SHEET 1 OF 5 FOR CERTIFICATION.

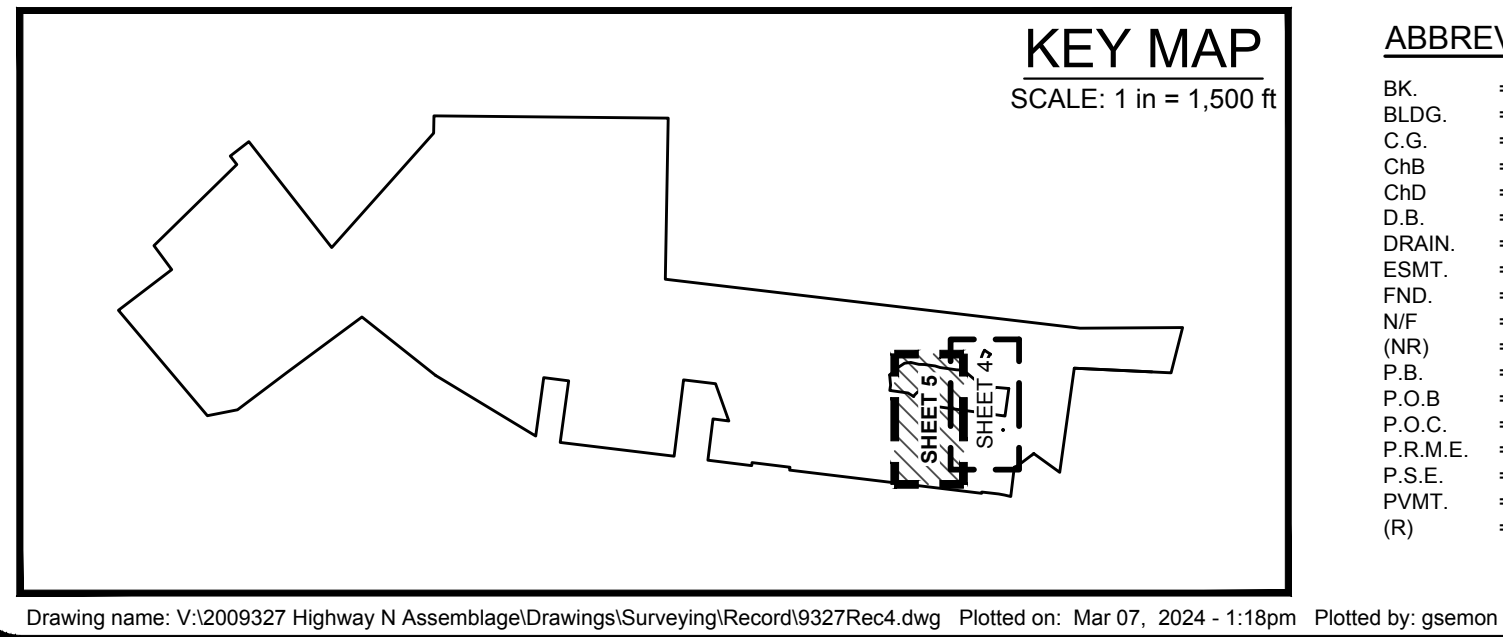
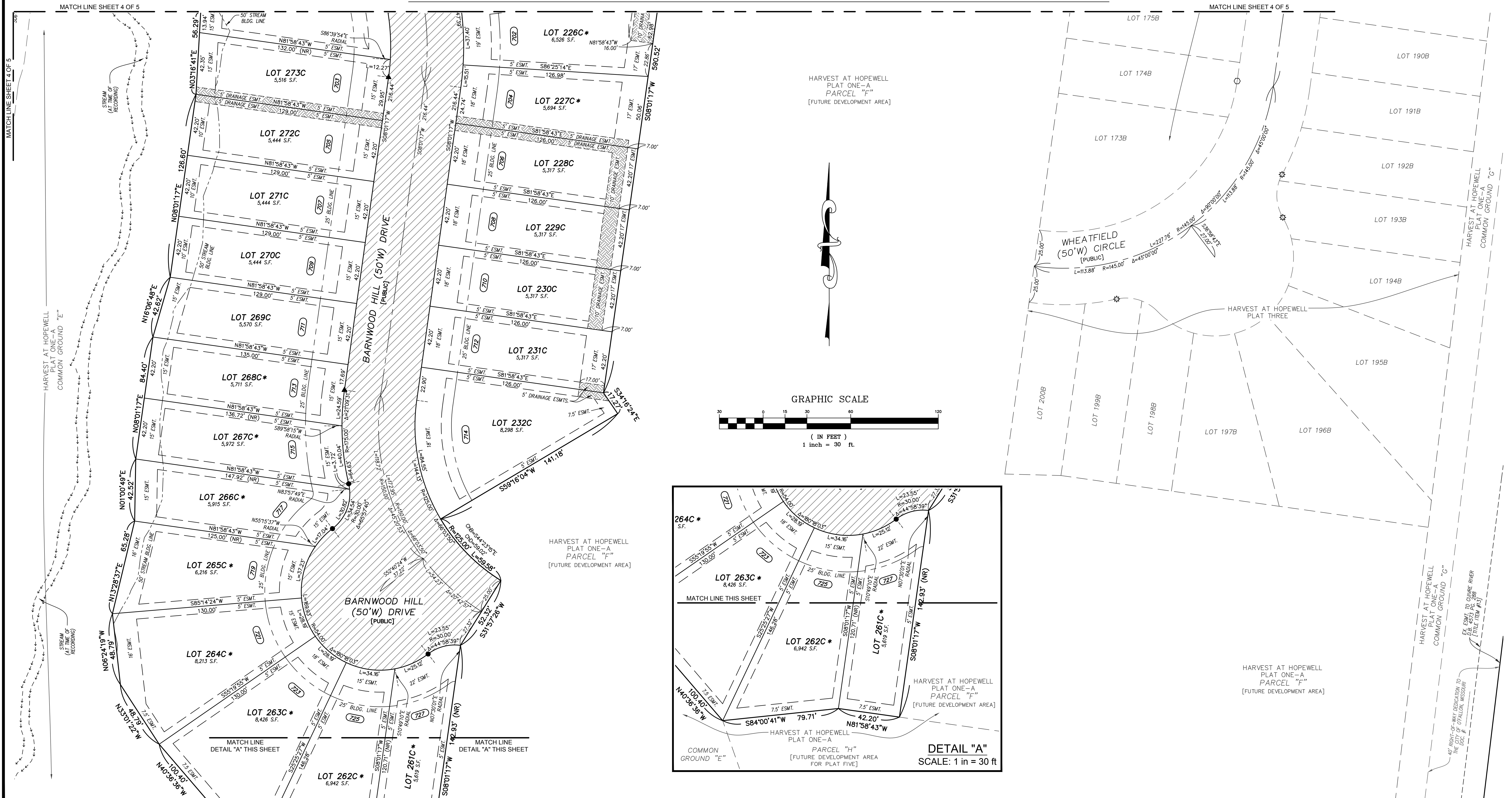
THE STERLING COMPANY  
MO REG. 307-D

JAMEY A. HENSON, P.L.S. - VICE PRESIDENT DATE  
MO REG. I.S. #2007017963

**SHEET 4 OF 5**



## *HARVEST AT HOPEWELL PLAT FOUR*



## ABBREVIATION LEGEND:

BLK.	=	BOOK
BLDG.	=	BUILDING
C.G.	=	COMMON GROUND
CHB	=	CHORD BEARING
CHD	=	CHORD DISTANCE
D.B.	=	DEED BOOK
DRAIN.	=	DRAINAGE
ESMT.	=	EASEMENT
FND.	=	FOUND
N/R	=	NOW OR FORMERLY
(NR)	=	NON-RADIAL
P.R.	=	PLAT BOOK
P.O.B	=	POINT OF BEGINNING
P.O.C.	=	POINT OF COMMENCEMENT
P.R.M.E.	=	PRIVATE ROADWAY MAINTENANCE EASEMENT
P.S.	=	PRIVATE SIDEWALK EASEMENT
P.V.MT.	=	PAVEMENT
(R)	=	RECORD



**ABBREVIATION LEGEND:**

R.O.W.	=	RIGHT-OF-WAY
(S)	=	SURVEYED
S.D.T.	=	SIGHT DISTANCE TRIANGLE
S.F.	=	SQUARE FEET
S.C.S.L.	=	TEMPORARY SLOPE AND CONSTRUCTION LICENSE
W	=	WIDTH

### SYMBOL LEGEND:

▲	SET PERMANENT MONUMENT IN ACCORDANCE WITH MISSOURI STANDARDS (5/8" I. ROD W/ ALUMINUM CAP).
●	SET SEMI- PERMANENT MONUMENT IN ACCORDANCE WITH MISSOURI STANDARDS. (1/2" I. ROD W/ PLASTIC CAP OR CUT CROSS).
○	SET PERMANENT MONUMENT IN PREVIOUS PLAT.
⊗	SET SEMI-PERMANENT MONUMENT IN PREVIOUS PLAT.
□	FOUND PERMANENT MONUMENT
○	FOUND SEMI-PERMANENT MONUMENT
+	FOUND CROSS
⬇	FOUND ANCHOR
⊙	BENCHMARK
523	ADDRESS
*	LOT SUBJECT TO STREET CREEP

**HATCHING LEGEND:**

PUBLIC RIGHT-OF-WAY	■	
DRAINAGE EASEMENT	■	

**SURVEYOR'S CERTIFICATE:**

SEE SHEET 1 OF 5 FOR CERTIFICATION.

THE STERLING COMPANY  
MO REG. 307-D

JAMEY A. HENSON, P.L.S. - VICE PRESIDENT DATE  
MO. REG. L.S. #2007017963