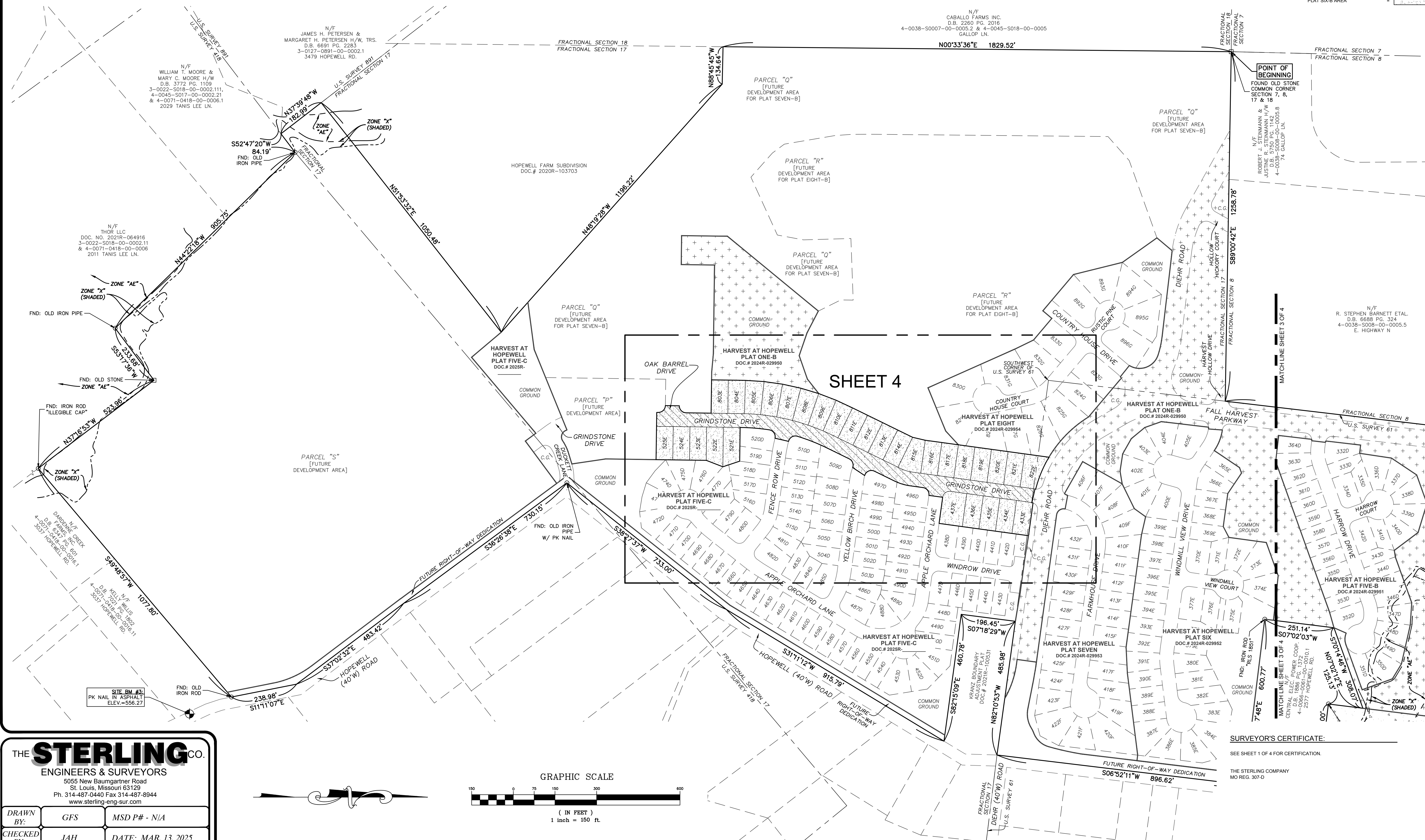


HARVEST AT HOPEWELL PLAT SIX-B

SITE OVERVIEW & SHEET INDEX



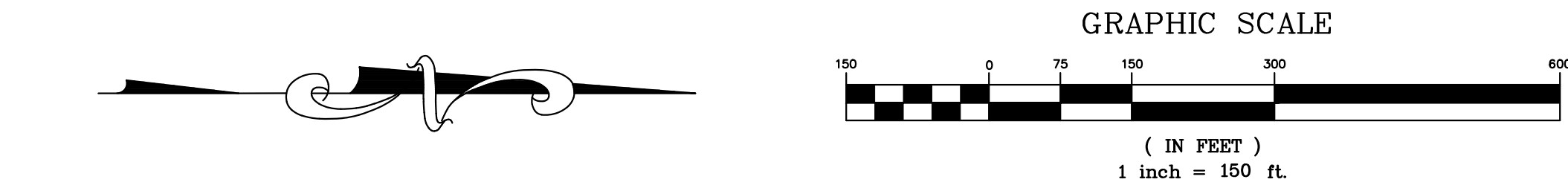
SYMBOL LEGEND:		HATCHING LEGEND:	
	BENCHMARK		PUBLIC RIGHT-OF-WAY
	FOUND PERMANENT MONUMENT		PLAT ONE-A AREA
	FOUND SEMI-PERMANENT MONUMENT		PLAT ONE-B AREA
	FOUND DISK MONUMENT		PLAT SIX-B AREA

THE **STERLING** CO.

ENGINEERS & SURVEYORS

5055 New Baumgartner Road
St. Louis, Missouri 63129
Ph. 314-487-0440 Fax 314-487-8944
www.sterling-eng-sur.com

DRAWN BY:	GFS	MSD P# - N/A
CHECKED BY:	JAH	DATE: MAR. 13, 2025
JOB NO.:	20-09-327	HARVEST AT HOPEWELL



SURVEYOR'S CERTIFICATE:

SEE SHEET 1 OF 4 FOR CERTIFICATION.

THE STERLING COMPANY
MO REG. 307-D

JAMEY A. HENSON, P.L.S. - VICE PRESIDENT

DATE

SHEET 2 OF 4

HARVEST AT HOPEWELL PLAT SIX-B

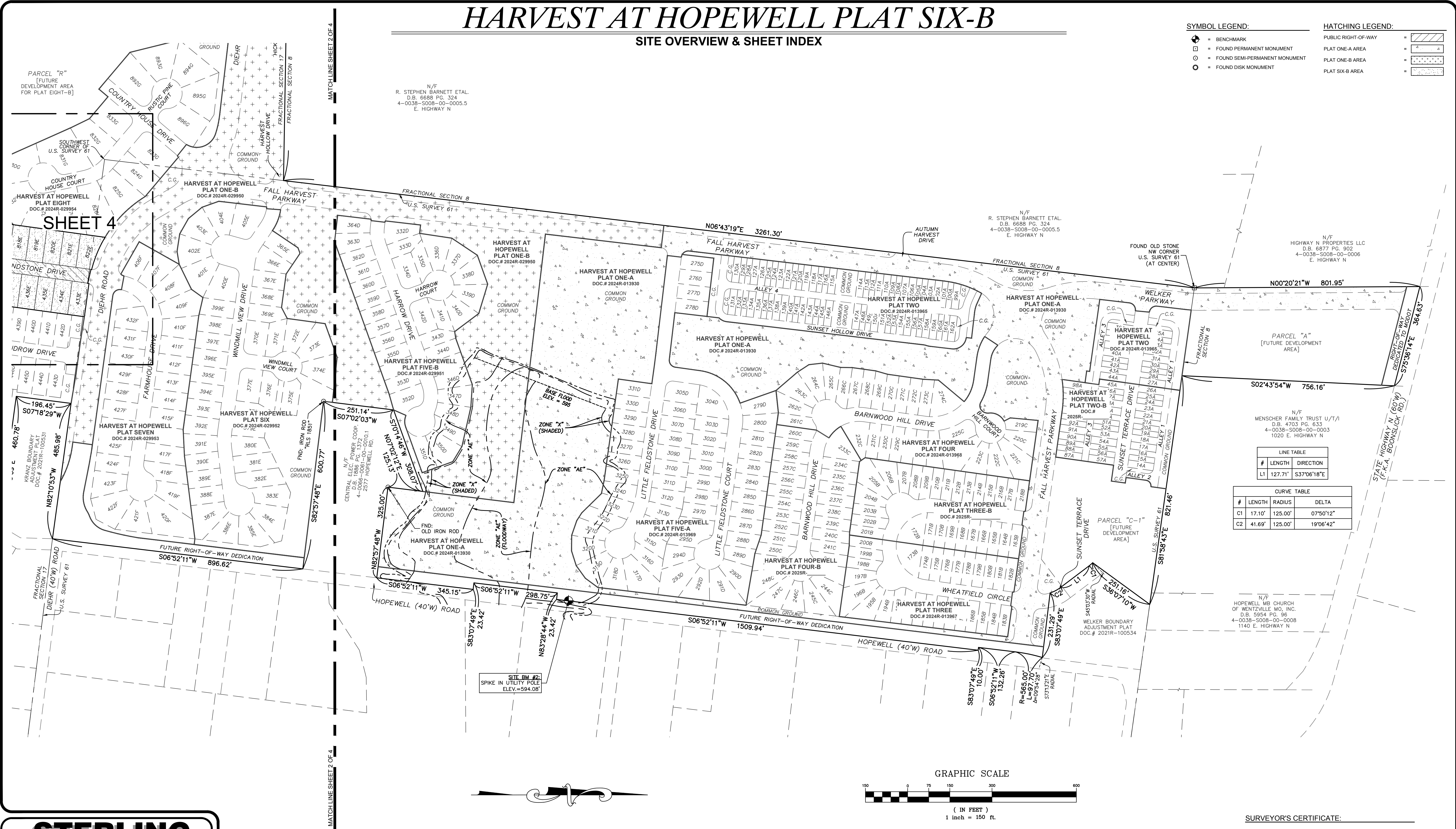
SITE OVERVIEW & SHEET INDEX

SYMBOL LEGEND:

- BENCHMARK
- FOUND PERMANENT MONUMENT
- FOUND SEMI-PERMANENT MONUMENT
- FOUND DISK MONUMENT

HATCHING LEGEND:

- PUBLIC RIGHT-OF-WAY
- PLAT ONE-A AREA
- PLAT ONE-B AREA
- PLAT SIX-B AREA



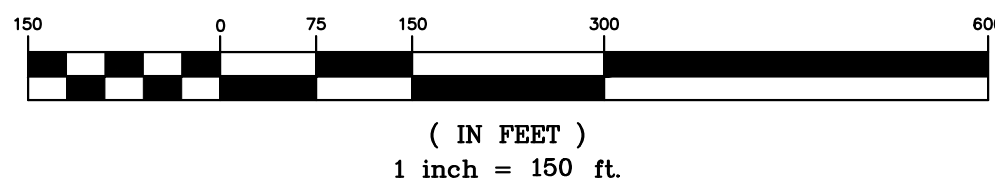
N/F
MENSCHER FAMILY TRUST U/T/I
D.B. 4703 PG. 633
4-0038-5008-00-0003
1020 E. HIGHWAY N

LINE TABLE		
#	LENGTH	DIRECTION
L1	127.71'	S37°06'18"E

CURVE TABLE			
#	LENGTH	RADIUS	DELTA
C1	17.10'	125.00'	07°50'12"
C2	41.69'	125.00'	19°06'42"

N/F
HOPEWELL MB CHURCH
OF WENTZVILLE MO, INC.
D.B. 5954 PG. 96
4-0038-5008-00-0008
1140 E. HIGHWAY N

GRAPHIC SCALE



SURVEYOR'S CERTIFICATE:

SEE SHEET 1 OF 4 FOR CERTIFICATION.

THE STERLING COMPANY
MO REG. 307-D

JAMEY A. HENSON, P.L.S. - VICE PRESIDENT
DATE
MO. REG. I.S. #2007017963

SHEET 3 OF 4

THE **STERLING** CO.

ENGINEERS & SURVEYORS

5055 New Baumgartner Road
St. Louis, Missouri 63129
Ph. 314-487-0440 Fax 314-487-8944
www.sterling-eng-sur.com

DRAWN BY:	GFS	MSD P# - N/A
CHECKED BY:	JAH	DATE: MAR. 13, 2025
JOB NO.:	20-09-327	HARVEST AT HOPEWELL

Drawing name: V:\2009327 Highway N Assemblage\Drawings\Surveying\Record\9327Rec6B.dwg Plotted on: Mar 13, 2025 - 12:18pm Plotted by: gsemon

HARVEST AT HOPEWELL PLAT SIX-B

