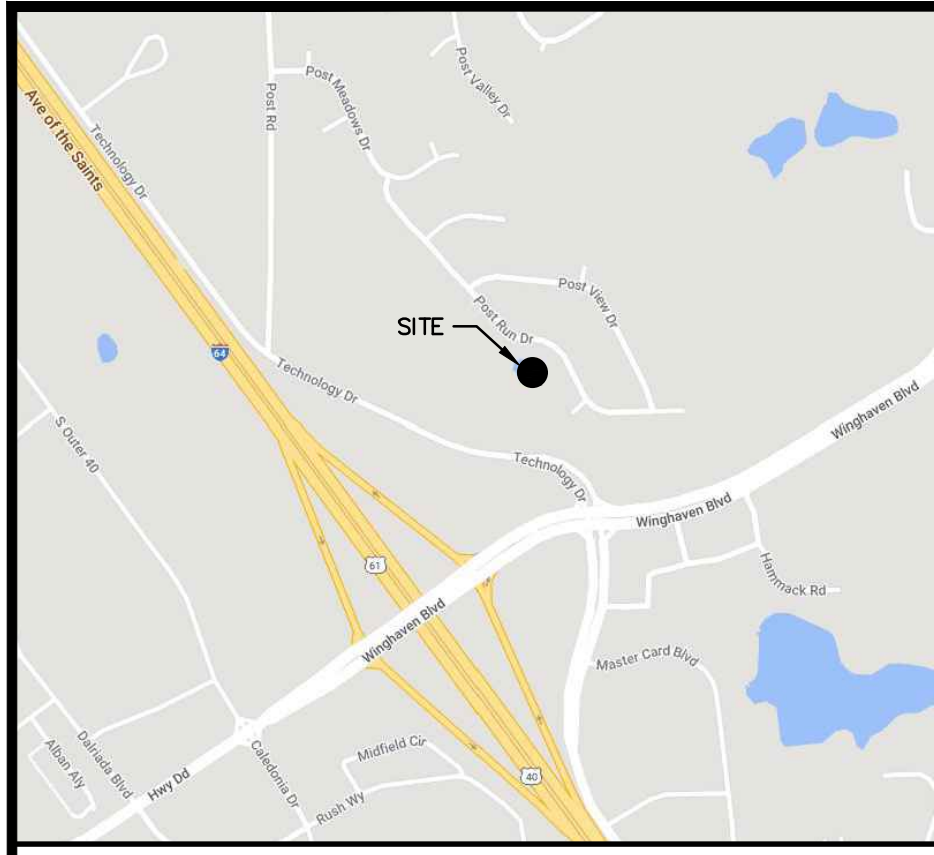
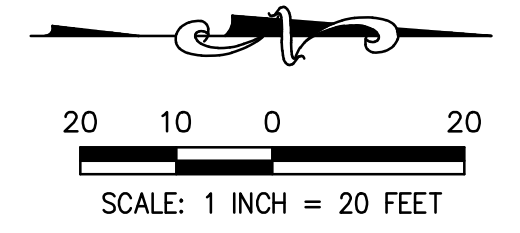
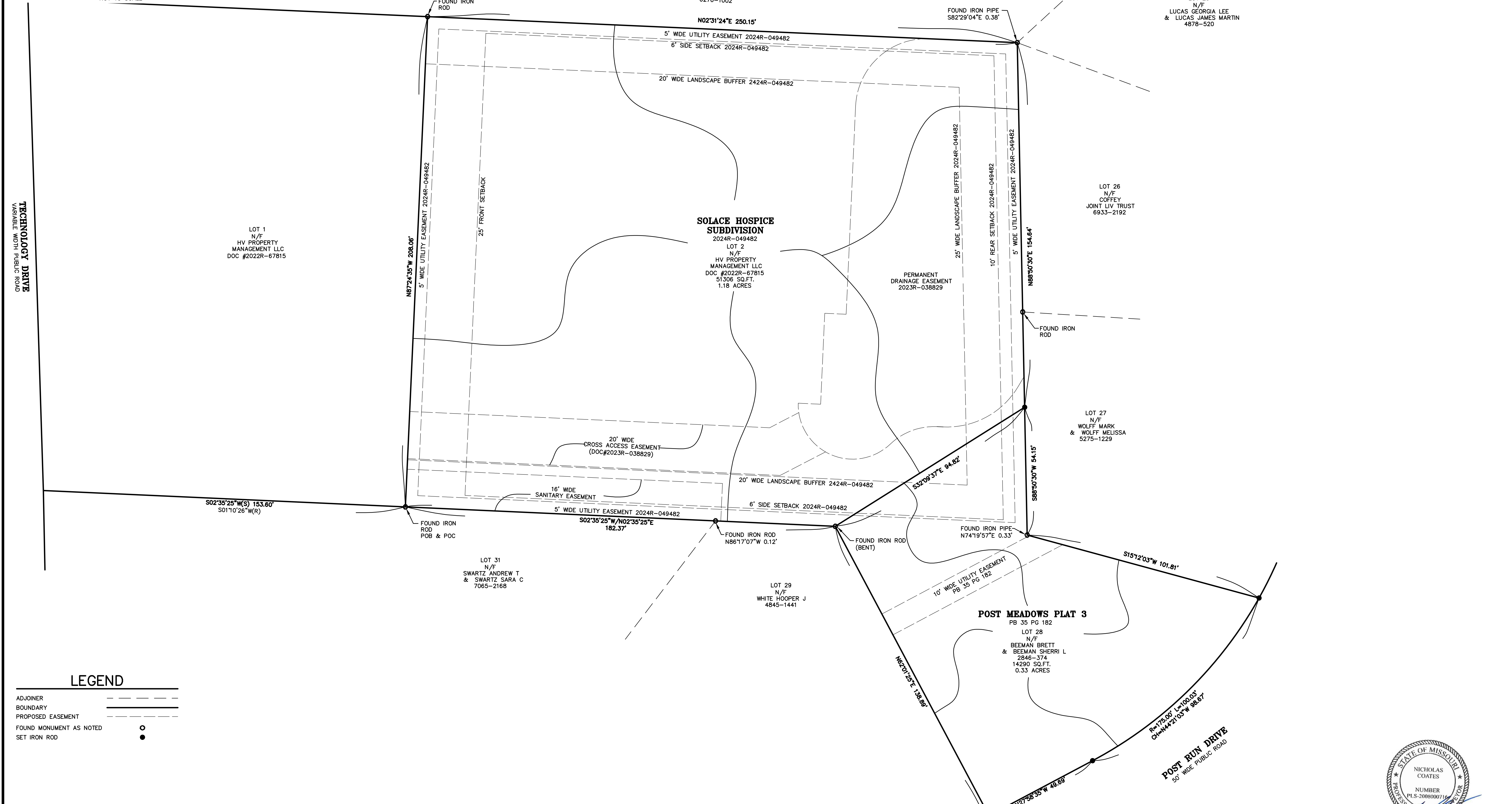


BOUNDARY ADJUSTMENT OF LOT 2 OF SOLACE HOSPICE AND LOT 28 OF POST MEADOWS PLAT 3

PART OF SECTION 12, TOWNSHIP 46 NORTH, RANGE 2
EAST OF THE FIFTH PRINCIPAL MERIDIAN, ST. CHARLES
COUNTY, MISSOURI

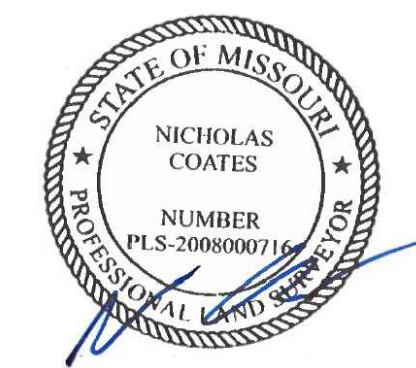


VICINITY MAP
NOT TO SCALE



LEGEND	
ADJOINER	---
BOUNDARY	---
PROPOSED EASEMENT	---
FOUND MONUMENT AS NOTED	○
SET IRON ROD	●

JULIE VERMILYE
SOLACE HOSPICE CARE
636-220-4052
jvermilye@solacehospicecare.com



636-332-4574 (tel.)
636-327-0760 (fax)
westfall@ochran.com

COCHRAN

- Civil Engineering
- Land Surveying
- Architecture
- Site Development
- General Consulting
- Master Planning

North Office
8 East Main St.
Wentzville, Missouri 63385

Missouri State Certificate of Authority Numbers:
Survey: 20080118460
Engineering: 2010000046

SOLACE HOSPICE SUBDIVISION
2300 TECHNOLOGY DRIVE
O'FALLON MISSOURI 63368

DATE	BY	REVISION
10-14-25	NC	REVISED CITY CERTIFICATION

DATE:	OCT 8, 2025
SCALE:	1"=20'
PROJ. NO.:	M22-8498D
DWG. NO.:	2 of 2