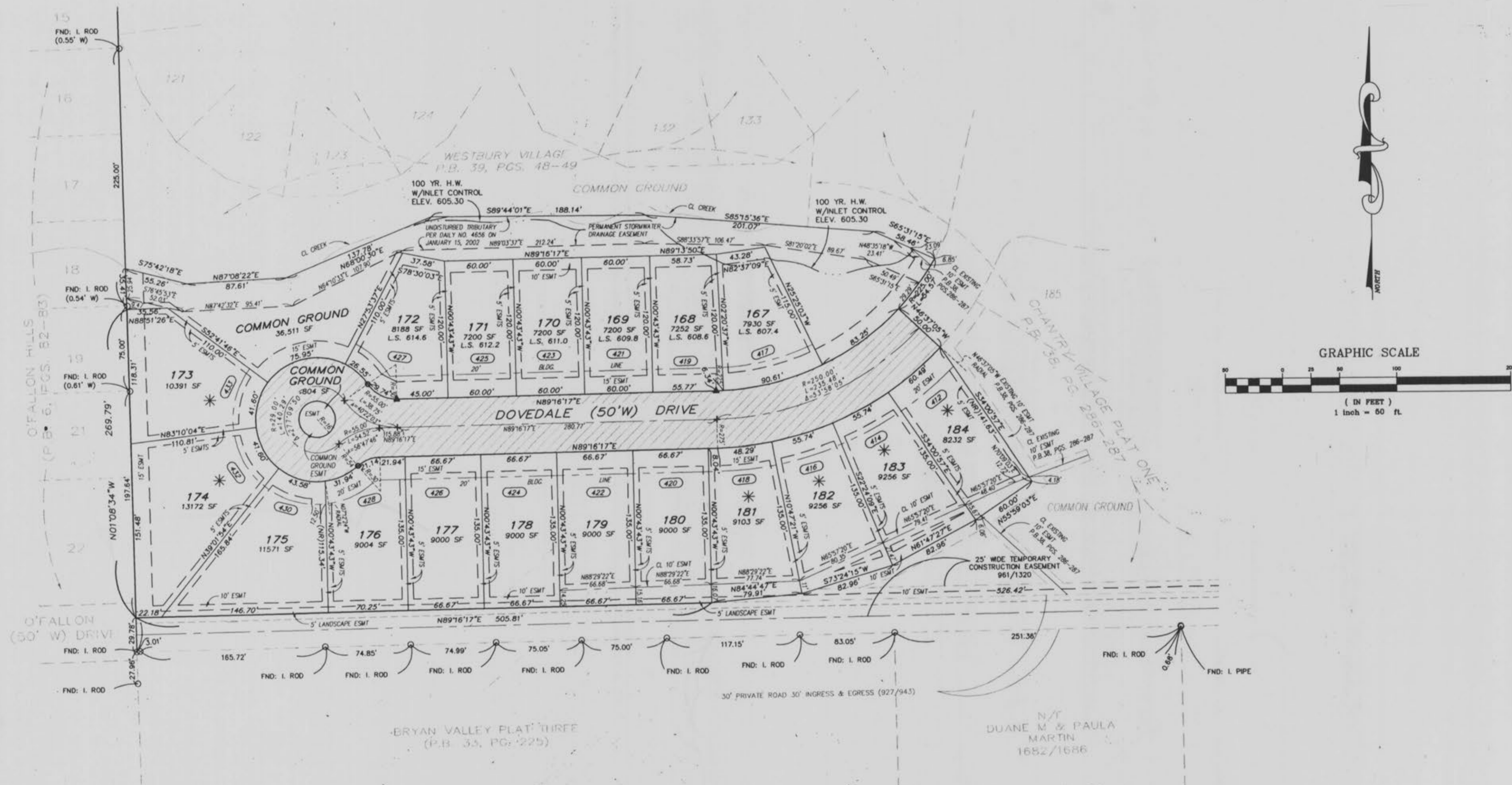


# CHANTRY VILLAGE AT THORNBURY PLAT TWO

A TRACT OF LAND BEING A PART OF U.S. SURVEY 1780  
TOWNSHIP 47 NORTH, RANGE 2 EAST, CITY OF O'FALLON,  
ST. CHARLES COUNTY, MISSOURI



THE **STERLING** CO.

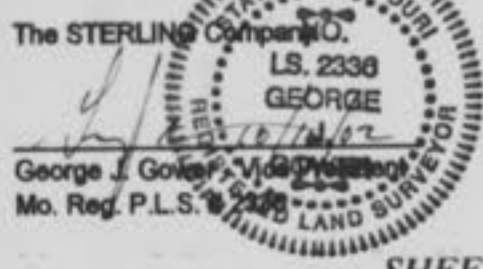
ENGINEERS & SURVEYORS  
5055 NEW BAUMGARTNER ROAD  
ST. LOUIS, MISSOURI 63129  
(314) 487-0440, FAX 487-8944  
E-Mail: Sterling@sterling-eng-sur.com

DRAWN BY:	BJB	MSD P# -
CHECKED BY:	GFW	DATE: 10/16/02
JOB NO.:	00-11-289	RECORD PLAT

## LEGEND

- ▲ PERMANENT MONUMENT (IN ACCORDANCE WITH MISSOURI MINIMUM STANDARDS)-(5/8" I. ROD W/ ALUMINUM CAP 24" IN LENGTH)
- SEMI-PERMANENT MONUMENT (IN ACCORDANCE WITH MISSOURI MINIMUM STANDARDS)-(1/2" I. ROD W/ PLASTIC CAP 18" IN LENGTH)
- + CROSSES
- \* STREET CREEP LOTS
- L.S. LOW SILL ELEVATION

SEE SHEET 2 OF 2 FOR CERTIFICATION AND NOTES



SHEET 1 OF 2

Thornbury  
Chantry Village, Plat 2 Book 39  
pg 195 1/2

Thornbury  
Chantry Village, Pl 2 Book 39  
P/ 195 24