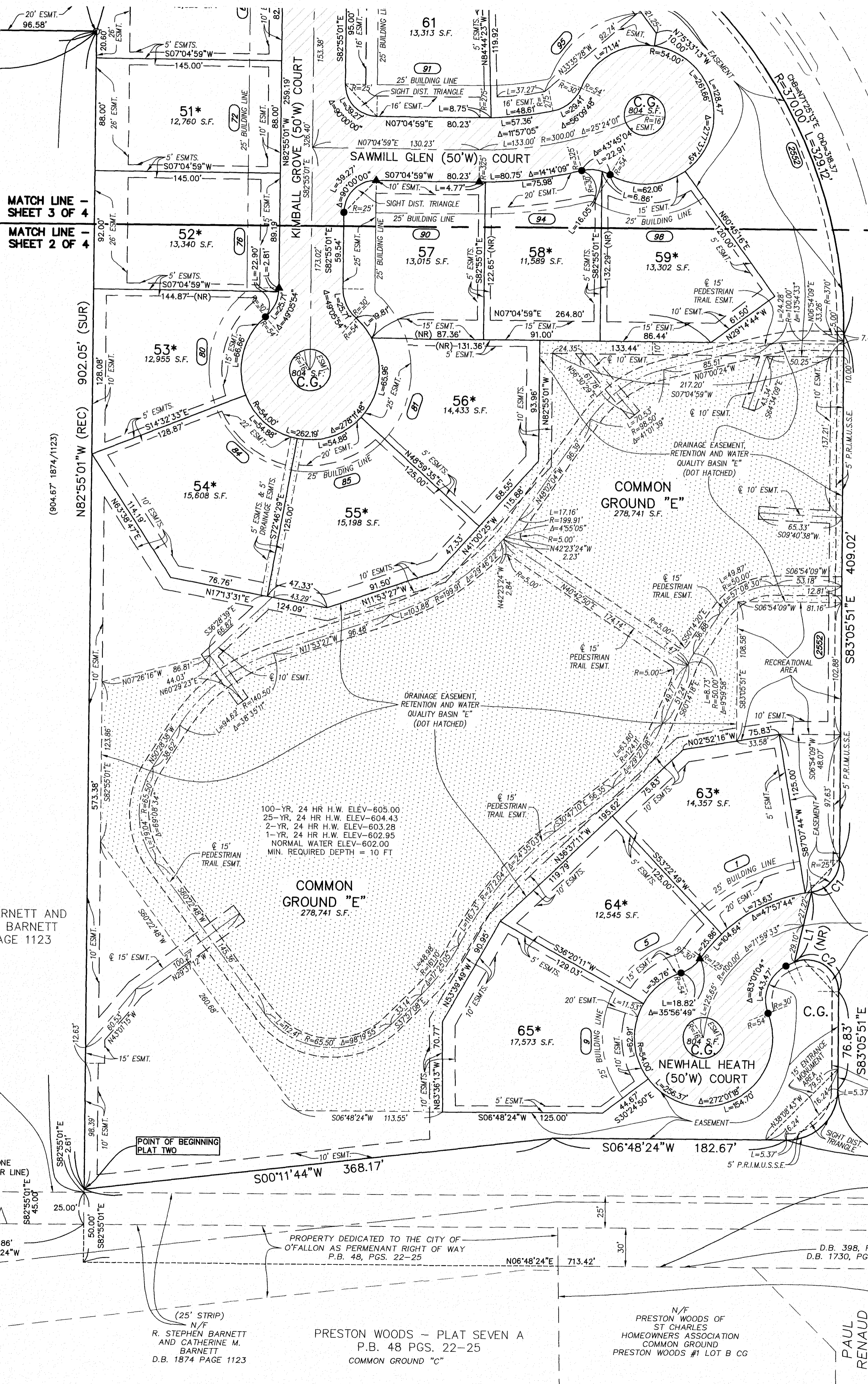
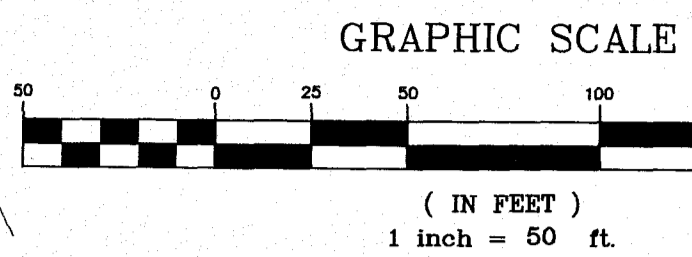
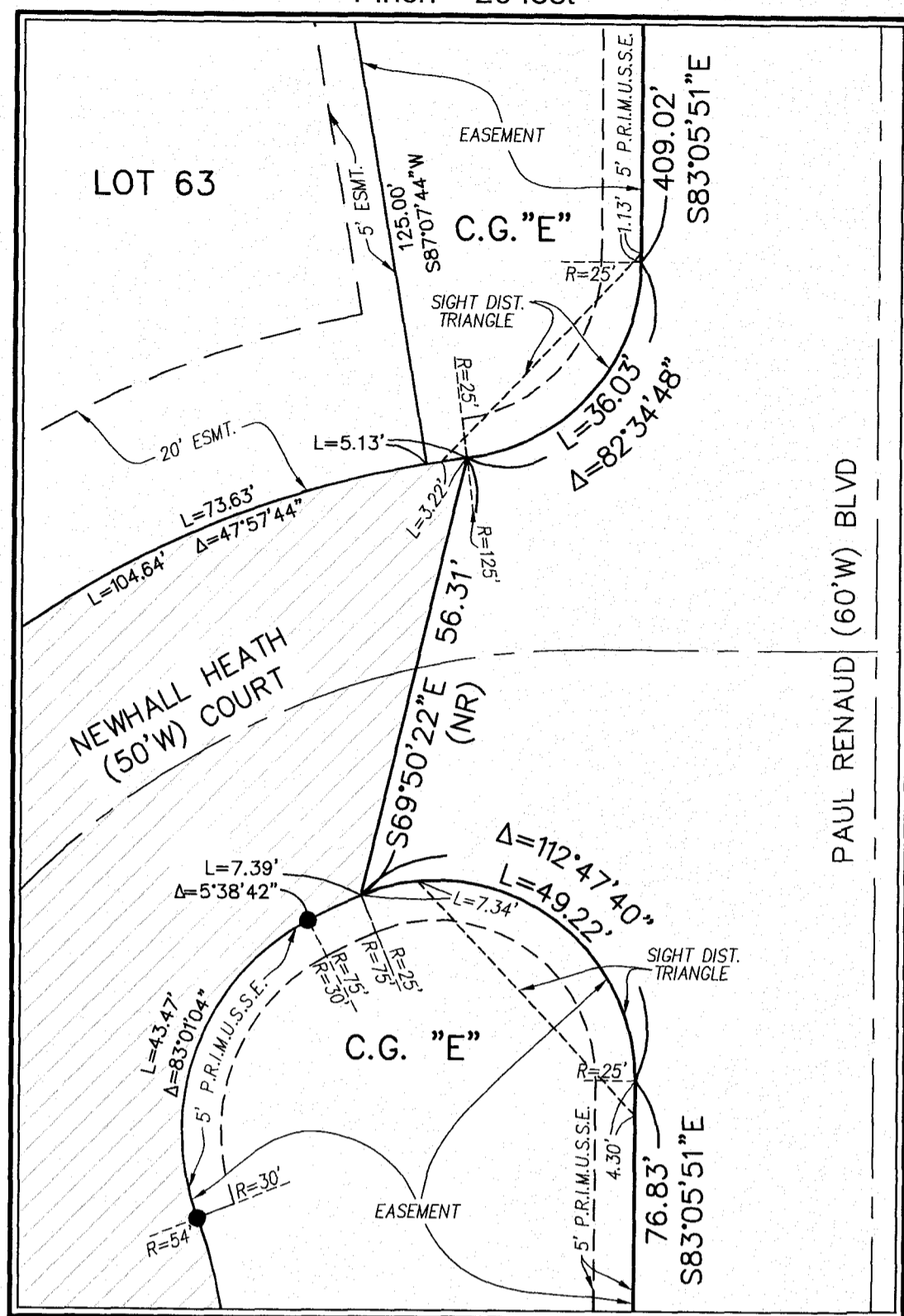


THE VILLAGES AT SHADY CREEK PLAT TWO

1:40000
Bk: PL 49 Pg: 52

DETAIL VIEW "A"
1 inch = 20 feet



MATCH LINE - SHEET 3 OF 4
MATCH LINE - SHEET 2 OF 4

PROPERTY DESCRIPTION (PLAT TWO):
PART OF U.S. SURVEY 931, TOWNSHIP 46 NORTH, RANGE 2 EAST OF THE FIFTH PRINCIPAL MERIDIAN, ST. CHARLES COUNTY, BEING MORE PARTICULARLY DESCRIBED AS FOLLOWS:
COMMENCING AT THE SOUTHWEST CORNER OF SAID SURVEY 931 SAID POINT ALSO BEING ON A NORTHERN CORNER OF FRACTIONAL SECTION 16, TOWNSHIP 46 NORTH, RANGE 2 EAST; SAID POINT ALSO BEING ON THE EAST LINE OF WYNDGATE VILLAGE E PLAT TWO (PLAT BOOK PL 42 PAGES 370-374) AND THE EAST LINE OF WYNDGATE VILLAGE D PLAT ONE (PLAT BOOK PL 43 PAGES 38-102), WYNDGATE VILLAGE C PLAT ONE (PLAT BOOK PL 43 PAGES 38-37), WYNDGATE VILLAGE B PLAT ONE (PLAT BOOK PL 47, PAGES 330-331) AND (PLAT BOOK PL 43 PAGES 38-37), WYNDGATE VILLAGE A PLAT ONE (PLAT BOOK PL 47, PAGES 330-331) AND WYNDGATE VILLAGE B PLAT ONE (PLAT BOOK PL 42 PAGES 364-368) RECORDS OF ST. CHARLES COUNTY, MISSOURI; THENCE ALONG THE WEST LINE OF SAID U.S. SURVEY 931 AND EAST LINE OF SAID FRACTIONAL SECTION 16; (NOTE FRACTIONAL SECTION 16 ENDS AND U.S. SURVEY 61 BEGINS WITHIN THIS CALL) NORTH 08°20'10" EAST A DISTANCE OF 308.24 FEET TO A POINT; THENCE LEAVING THE WEST LINE OF SAID U.S. SURVEY 931; AND PROCEEDING NORTH 89°56'40" EAST, 1978.41 FEET TO A POINT LOCATED ON THE WEST LINE OF 25 FOOT WIDE STRIP OF LAND DECEDED TO R. STEPHEN AND CATHERINE M. BARNETT IN DEED BOOK 1874 PAGE 123, RECORDS OF ST. CHARLES COUNTY, MISSOURI; THENCE ALONG THE WEST LINE OF SAID 25 FOOT WIDE STRIP SOUTH 06°47'41" WEST, 567.50 FEET TO A POINT; THENCE CONTINUING ALONG THE WEST LINE OF SAID 25 FOOT WIDE STRIP SOUTH 06°48'24" WEST, A DISTANCE OF 1943.23 FEET TO THE NORTHEAST CORNER OF A TRACT OF LAND DESCRIBED IN A FOREMENTIONED DEED TO BARNETT; THENCE ALONG THE NORTH LINE OF SAID BARNETT TRACT NORTH 82°55'01" WEST, 2.61 FEET TO THE POINT OF BEGINNING OF THE HEREIN DESCRIBED TRACT OF LAND; THENCE CONTINUING ALONG SAID NORTHERN LINE, NORTH 82°55'01" WEST, 902.05 FEET TO THE NORTHWEST CORNER OF SAID BARNETT TRACT; THENCE ALONG THE WEST LINE OF SAID BARNETT TRACT SOUTH 06°48'44" WEST, 979.93 FEET TO A POINT; THENCE LEAVING SAID WESTERN LINE, AND PROCEEDING THE FOLLOWING COURSES, DISTANCES, AND CURVES: THENCE NORTH 79°12'32" WEST, 58.17 FEET TO A POINT; THENCE NORTH 10°47'28" EAST, 125.00 FEET TO A POINT; THENCE NORTH 79°12'32" WEST, 548.25 FEET TO A POINT; THENCE NORTH 83°39'50" WEST, 88.00 FEET TO A POINT; THENCE NORTH 06°20'10" EAST, 86.00 FEET TO A POINT; THENCE NORTH 56°38'18" EAST, 121.24 FEET TO A POINT; THENCE ALONG A NON-RADIAL ARC TO THE RIGHT, AN ARC LENGTH OF 76.18 FEET, A RADIUS OF 54.00 FEET, THE CHORD OF WHICH BEARS SOUTH 88°32'37" EAST, 70.02 FEET TO A POINT; THENCE ALONG A NON-RADIAL ARC TO THE RIGHT, AN ARC LENGTH OF 235.69 FEET, A RADIUS OF 780.00 FEET, THE CHORD OF WHICH BEARS NORTH 54°35'39" EAST, 234.79 FEET TO A POINT; THENCE NORTH 07°40'07" EAST, 107.82 FEET TO A POINT; THENCE NORTH 09°28'30" WEST, 50.00 FEET TO A POINT; THENCE NORTH 42°52'09" WEST, 208.24 FEET TO A POINT; THENCE NORTH 26°44'58" WEST, 186.34 FEET TO A POINT; THENCE NORTH 68°15'02" WEST, 156.14 FEET TO A POINT; THENCE ALONG A NON-RADIAL ARC TO THE RIGHT, AN ARC LENGTH OF 36.24 FEET, A RADIUS OF 25.00 FEET, THE CHORD OF WHICH BEARS NORTH 24°01'08" EAST, 31.82 FEET TO A POINT OF TANGENCY; THENCE NORTH 63°15'02" EAST, 121.22 FEET TO A POINT OF CURVATURE; THENCE ALONG AN ARC TO THE LEFT, AN ARC LENGTH OF 235.69 FEET, A RADIUS OF 780.00 FEET, THE CHORD OF WHICH BEARS NORTH 54°35'39" EAST, 234.79 FEET TO A POINT OF TANGENCY; THENCE NORTH 48°58'18" EAST, 88.18 FEET TO A POINT; THENCE NORTH 44°03'44" WEST, 60.00 FEET TO A POINT; THENCE ALONG A RADIAL ARC TO THE RIGHT, AN ARC LENGTH OF 34.24 FEET, A RADIUS OF 25.00 FEET, THE CHORD OF WHICH BEARS NORTH 06°42'23" EAST, 31.82 FEET TO A POINT; THENCE ALONG A NON-RADIAL ARC TO THE RIGHT, AN ARC LENGTH OF 300.00 FEET, A RADIUS OF 300.00 FEET, THE CHORD OF WHICH BEARS NORTH 44°03'44" WEST, 58.73 FEET TO A POINT; THENCE NORTH 70°25'44" WEST, 84.02 FEET TO A POINT; THENCE NORTH 43°16'57" WEST, 102.31 FEET TO A POINT; THENCE NORTH 65°49'58" WEST, 23.60 FEET TO A POINT; THENCE NORTH 06°20'10" EAST, 112.58 FEET TO A POINT; THENCE NORTH 12°49'09" EAST, 88.57 FEET TO A POINT; THENCE NORTH 49°14'47" EAST, 82.82 FEET TO A POINT; THENCE SOUTH 79°14'03" EAST, 88.85 FEET TO A POINT; THENCE NORTH 45°56'16" EAST, 117.84 FEET TO A POINT; THENCE ALONG A NON-RADIAL ARC TO THE LEFT, AN ARC LENGTH OF 1.94 FEET, A RADIUS OF 250.00 FEET, THE CHORD OF WHICH BEARS NORTH 53°29'15" WEST, 1.94 FEET TO A POINT; THENCE ALONG A RADIAL LINE, NORTH 36°17'23" EAST, 50.00 FEET TO A POINT; THENCE ALONG A RADIAL ARC TO THE RIGHT, AN ARC LENGTH OF 8.57 FEET, A RADIUS OF 300.00 FEET, THE CHORD OF WHICH BEARS SOUTH 52°53'32" EAST, 8.57 FEET TO A POINT; THENCE ALONG A NON-RADIAL ARC, NORTH 30°40'47" EAST, 118.71 FEET TO A POINT; THENCE NORTH 36°03'08" EAST, 88.86 FEET TO A POINT; THENCE SOUTH 74°10'58" EAST, 193.74 FEET TO A POINT; THENCE SOUTH 69°04'44" EAST, 70.21 FEET TO A POINT; THENCE SOUTH 28°07'44" EAST, 72.81 FEET TO A POINT; THENCE SOUTH 13°56'30" EAST, 108.96 FEET TO A POINT; THENCE SOUTH 45°56'16" WEST, 212.41 FEET TO A POINT; THENCE ALONG A NON-RADIAL ARC TO THE RIGHT, AN ARC LENGTH OF 95.03 FEET, A RADIUS OF 25.00 FEET, THE CHORD OF WHICH BEARS NORTH 49°49'09" WEST, 5.03 FEET TO A POINT; THENCE SOUTH 45°56'16" WEST, 209.53 FEET TO A POINT OF CURVATURE; THENCE ALONG AN ARC TO THE RIGHT AN ARC LENGTH OF 329.12 FEET, A RADIUS OF 370.00 FEET, THE CHORD OF WHICH BEARS NORTH 71°25'13" EAST, 318.37 FEET TO A POINT OF TANGENCY; THENCE SOUTH 83°05'51" EAST, 409.02 FEET TO A POINT OF CURVATURE; THENCE ALONG AN ARC TO THE RIGHT, AN ARC LENGTH OF 36.69 FEET, A RADIUS OF 25.00 FEET, THE CHORD OF WHICH BEARS NORTH 45°56'16" EAST, 209.53 FEET TO A POINT OF CURVATURE; THENCE ALONG AN INVERSE TANGENT LINE, SOUTH 44°03'44" EAST, 110.00 FEET TO A POINT OF INVERSE CURVATURE; THENCE ALONG AN INVERSE TANGENT ARC TO THE RIGHT, AN ARC LENGTH OF 39.27, A RADIUS OF 25.00 FEET, THE CHORD OF WHICH BEARS NORTH 05°16'40" EAST, 35.36 FEET TO A POINT OF TANGENCY; THENCE NORTH 45°56'16" EAST, 209.53 FEET TO A POINT OF CURVATURE; THENCE ALONG AN INVERSE TANGENT LINE, SOUTH 44°03'44" EAST, 110.00 FEET TO A POINT OF INVERSE CURVATURE; THENCE ALONG AN ARC TO THE RIGHT, AN ARC LENGTH OF 62.78 FEET, A RADIUS OF 40.00 FEET, THE CHORD OF WHICH BEARS SOUTH 38°08'49" EAST, 56.52 FEET TO A POINT OF TANGENCY; THENCE SOUTH 06°48'24" WEST, 182.67 FEET TO A POINT; THENCE SOUTH 00°11'44" WEST, 368.17 FEET TO THE POINT OF BEGINNING, CONTAINING 1,292,483 SQUARE FEET (29.6708 ACRES, MORE OR LESS), ACCORDING TO A SURVEY PERFORMED DURING JUNE 2014, UNDER ORDER NUMBER 14-03-06.

- LEGEND**
- ▲ PERMANENT MONUMENT (IN ACCORDANCE WITH MO MINIMUM STANDARDS) (5/8" I.R.O.D. W/ ALUMINUM CAP)
 - SEMI-PERMANENT MONUMENT (IN ACCORDANCE WITH MO MINIMUM STANDARDS) (1/2" I.R.O.D. W/ PLASTIC CAP)
 - C.G. COMMON GROUND
 - ESMT. EASEMENT
 - FND. FOUND
 - P.W.M. PAVEMENT
 - BLDG. BUILDING
 - 523 ADDRESS
 - ⊕ FOUND CROSS
 - ⚡ FOUND ANCHOR

CURVE #	LENGTH	RADIUS	CHORD BEARING	CHORD LENGTH	DELTA
C1	36.03'	25.00'	S41°48'27"E	32.99'	082°34'48"
C2	49.22'	25.00'	N40°30'19"E	41.64'	112°47'40"

LINE #	LENGTH	DIRECTION
L1	56.31'	S69°50'22"E

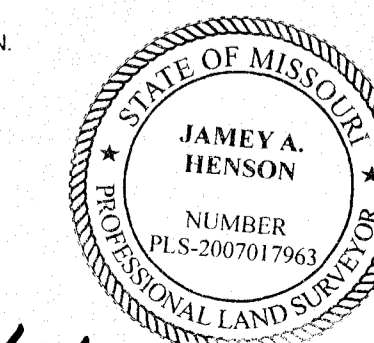
THE STERLING CO.
ENGINEERS & SURVEYORS
5055 New Baumgartner Road
St. Louis, Missouri 63129
Ph. 314-487-0440 Fax 314-487-8944
www.sterling-eng-survey.com

DRAWN BY:	GFS	MSD P# -	N/A
CHECKED BY:	JAH	DATE:	JULY 21, 2016
JOB NO.:	14-03-087	THE VILLAGES AT SHADY CREEK	

SURVEYOR'S CERTIFICATE:

SEE SHEET 1 OF 4 FOR CERTIFICATION.

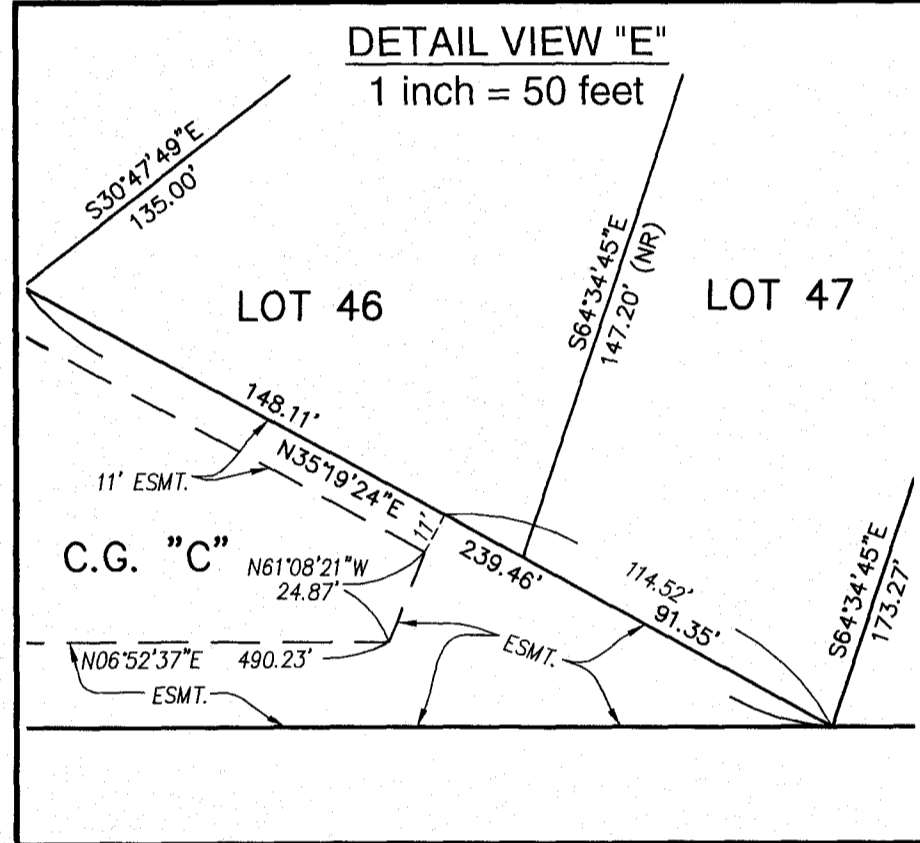
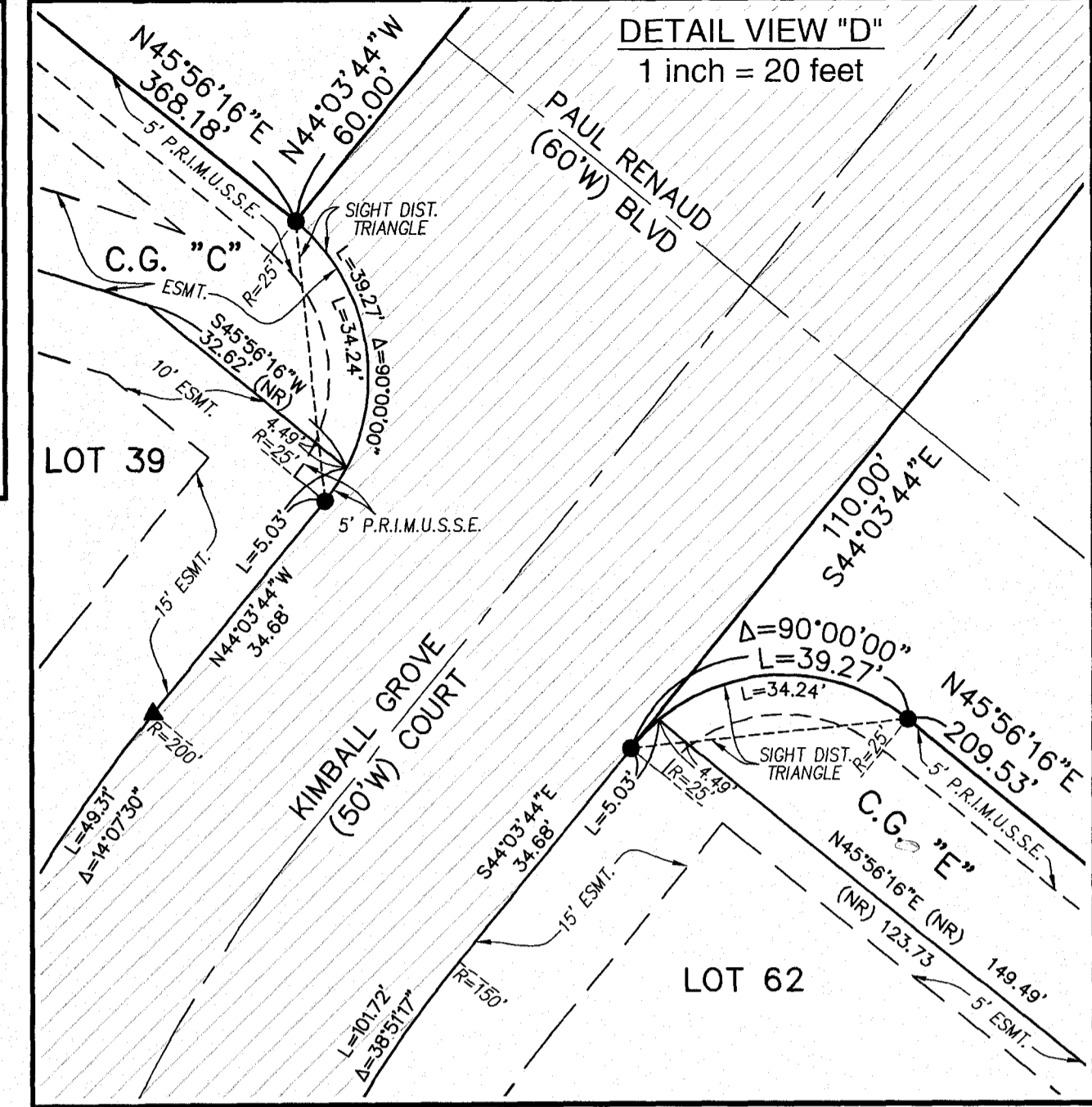
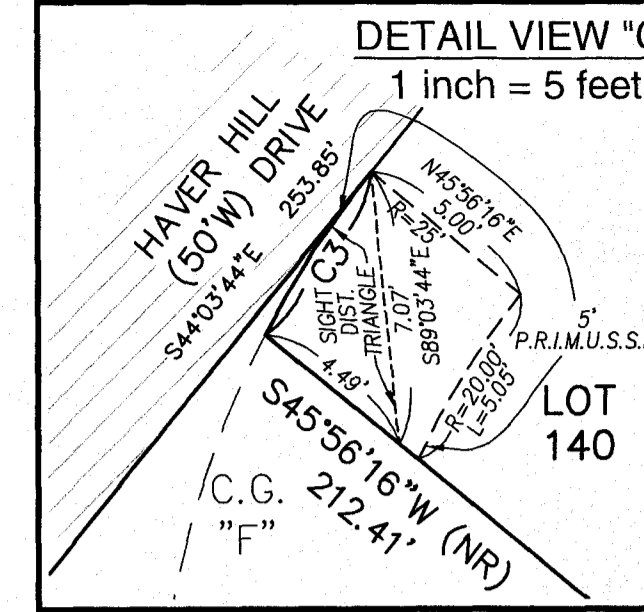
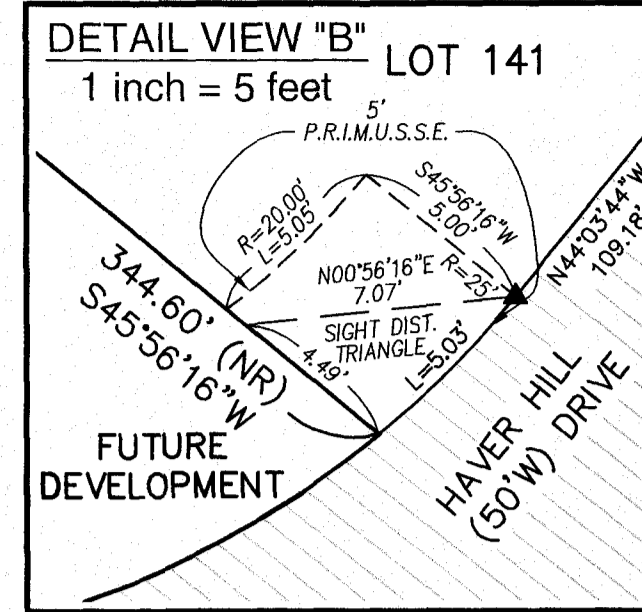
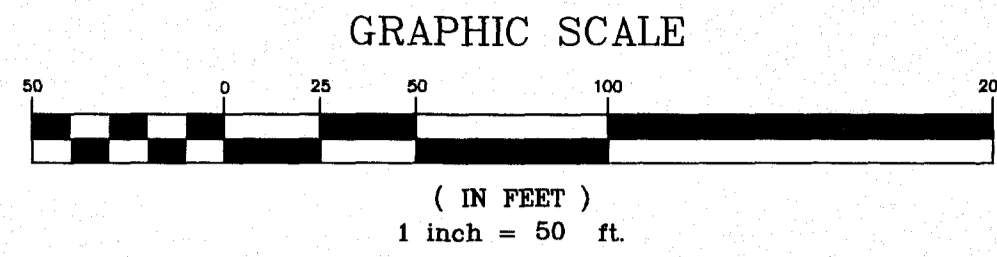
THE STERLING COMPANY
MO REG. 307-0



JAMEY A. HENSON, PLS
MO REG. L.S. #2007017963

THE VILLAGES AT SHADY CREEK PLAT TWO

2016020300171314
Bk. PL49 Pg. 53

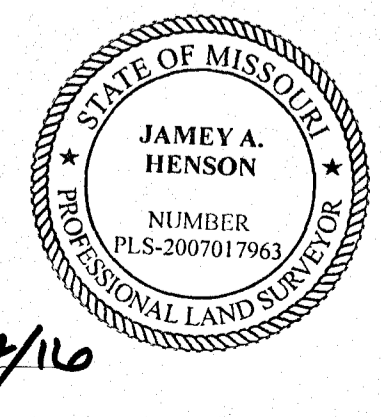


Curve Table				
CURVE #	LENGTH	RADIUS	CHORD BEARING	DELTA
C1	39.27'	25.00'	N00°56'16"E	090°00'00"
C2	34.24'	25.00'	N06°42'23"E	078°27'47"
C3	5.03'	25.00'	N49°49'50"W	011°32'13"
C4	24.12'	375.00'	S47°46'49"W	24.11'
C5	11.45'	325.00'	N46°56'50"E	002°01'09"



- LEGEND**
- ▲ PERMANENT MONUMENT (IN ACCORDANCE WITH MO MINIMUM STANDARDS) (5/8" ROD W/ ALUMINUM CAP)
 - SEMI-PERMANENT MONUMENT (IN ACCORDANCE WITH MO MINIMUM STANDARDS) (1/2" ROD W/ PLASTIC CAP)
 - C.G. COMMON GROUND
 - ESMT. EASEMENT
 - FRD. FOUND
 - P.W.M. PAVEMENT
 - BLDG. BUILDING
 - (523) ADDRESS
 - ⊕ FOUND CROSS
 - ⊕ FOUND ANCHOR

SURVEYOR'S CERTIFICATE:
SEE SHEET 1 OF 4 FOR CERTIFICATION.



THE STERLING COMPANY
MO REG. 307-D

J.A.H.
JAMEY A. HENSON, PLS
MO REG. L.S. #2007017963
7/22/16

THE STERLING CO.
ENGINEERS & SURVEYORS
5055 New Baumgartner Road
St. Louis, Missouri 63129
Ph. 314-487-0440 Fax 314-487-8944
www.sterling-eng-sur.com

DRAWN BY:	GFS	MSD P# -	N/A
CHECKED BY:	JAH	DATE:	JULY 21, 2016
JOB NO.:	14-03-087	THE VILLAGES AT SHADY CREEK	

N/F
R. STEPHEN BARNETT AND
CATHERINE M. BARNETT
D.B. 1874 PAGE 1123

MATCH LINE - SHEET 3 OF 4
MATCH LINE - SHEET 2 OF 4

MATCH LINE - SHEET 3 OF 4
MATCH LINE - SHEET 2 OF 4

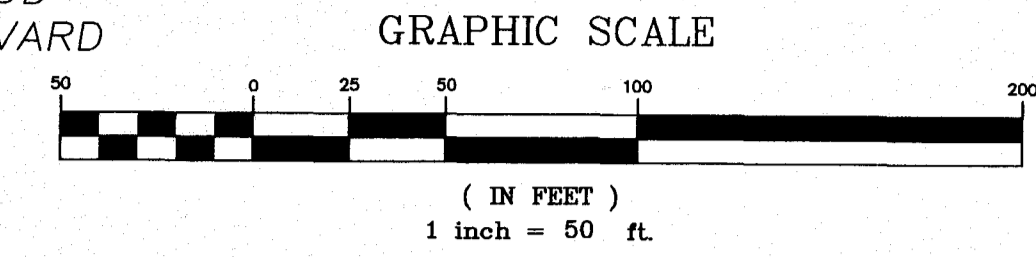
THE VILLAGES AT SHADY CREEK PLAT TWO

COMMON GROUND AREA "N"
DRAINAGE ESMT. & DUCKETT
CREEK SEWER ESMT.
WYNDGATE VILLAGE E PLAT TWO
(P.B. PL42 Pg. 370-374)
WYNDGATE VALLEY
(50'W) DRIVE

COMMON GROUND AREA "O"
UTILITY AND DRAINAGE ESMT.
WYNDGATE VILLAGE E PLAT TWO
(P.B. PL42 Pg. 370-374)

LOT 549 OF
WYNDGATE VILLAGE D PLAT ONE
(P.B. PL43 Pg. 98-102)
COMMON GROUND AREA "R"
AND UTILITY
WYNDGATE VILLAGE D PLAT ONE
(P.B. PL43 Pg. 98-102)

PAUL RENAUD
(60'W) BOULEVARD



FUTURE DEVELOPMENT

COMMON GROUND "C"
214,152 S.F.

FUTURE DEVELOPMENT

COMMON GROUND "C"
214,152 S.F.

FUTURE DEVELOPMENT

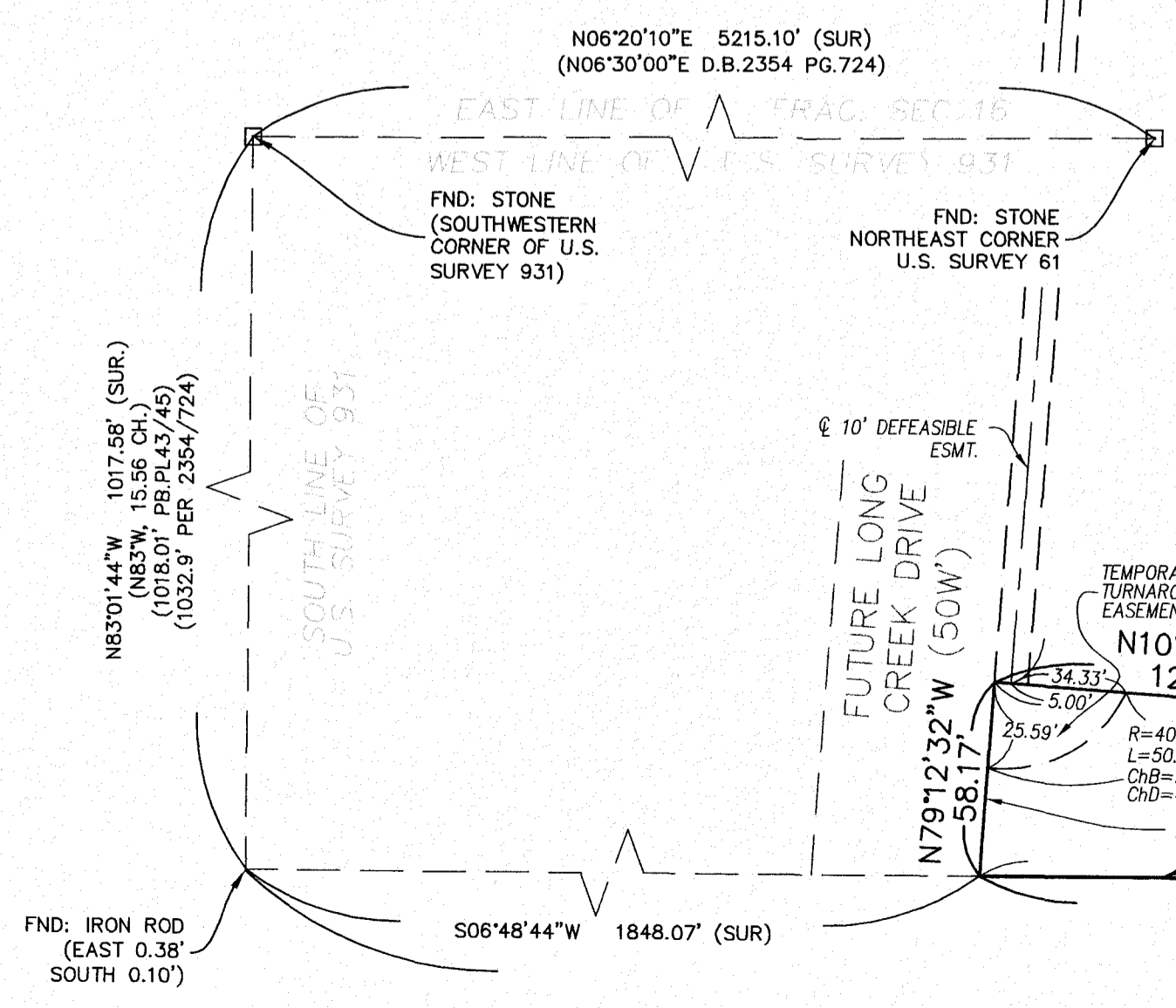
COMMON GROUND "C"
214,152 S.F.

BRISCOE GLEN (50'W) COURT

- LEGEND**
- ▲ PERMANENT MONUMENT
(IN ACCORDANCE WITH MO MINIMUM STANDARDS)
(5/8" I.R.O.D W/ ALUMINUM CAP)
 - SEMI-PERMANENT MONUMENT
(IN ACCORDANCE WITH MO MINIMUM STANDARDS)
(1/2" I.R.O.D W/ PLASTIC CAP)
 - C.G. COMMON GROUND
 - ESMT. EASEMENT
 - FND. FOUND
 - PVMT. PAVEMENT
 - BLDG. BUILDING
 - 523 ADDRESS
 - + FOUND CROSS
 - ⊥ FOUND ANCHOR

THE STERLING CO.
ENGINEERS & SURVEYORS
5055 New Baumgartner Road
St. Louis, Missouri 63129
Ph. 314-487-0440 Fax 314-487-8944
www.sterling-eng-sur.com

DRAWN BY:	GFS	MSD P# -	N/A
CHECKED BY:	JAH	DATE:	JULY 21, 2016
JOB NO.:	14-03-087	THE VILLAGES AT SHADY CREEK	

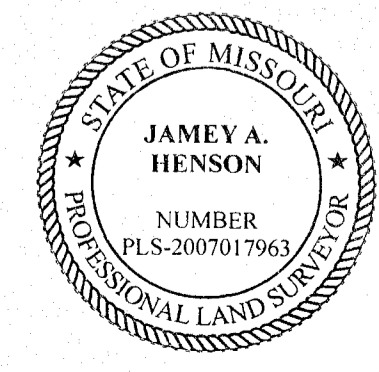


N/F
R. STEPHEN BARNETT AND
CATHERINE M. BARNETT
D.B. 1874 PAGE 1123

(2814.24' PER 2354/724)
(57W, 42.64 CH./2814.24')

SURVEYOR'S CERTIFICATE:
SEE SHEET 1 OF 4 FOR CERTIFICATION.

THE STERLING COMPANY
MO REG. 307-D



JAMES A. HENSON
PLS-2007017963
MO REG. L.S. #2007017963