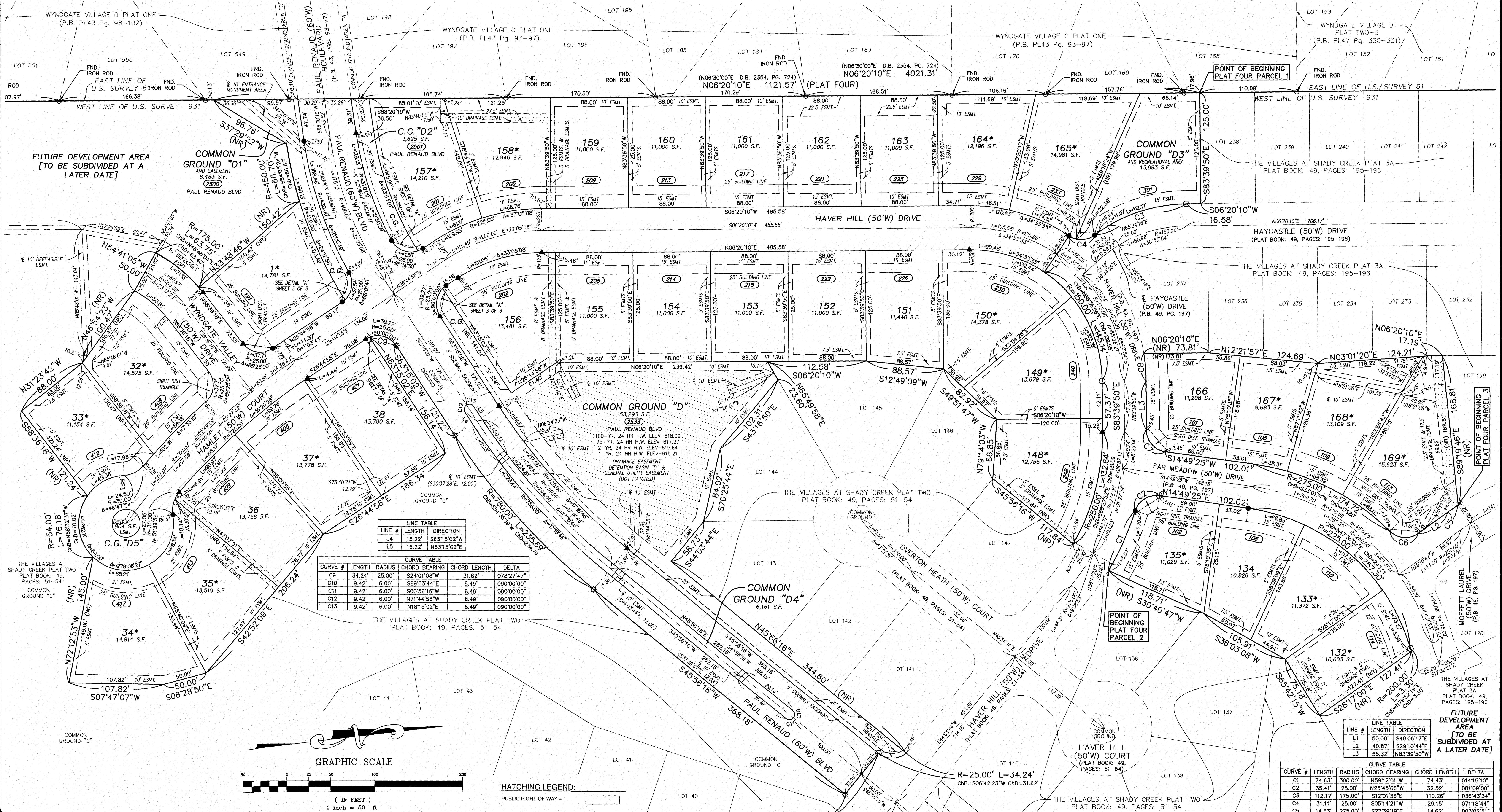
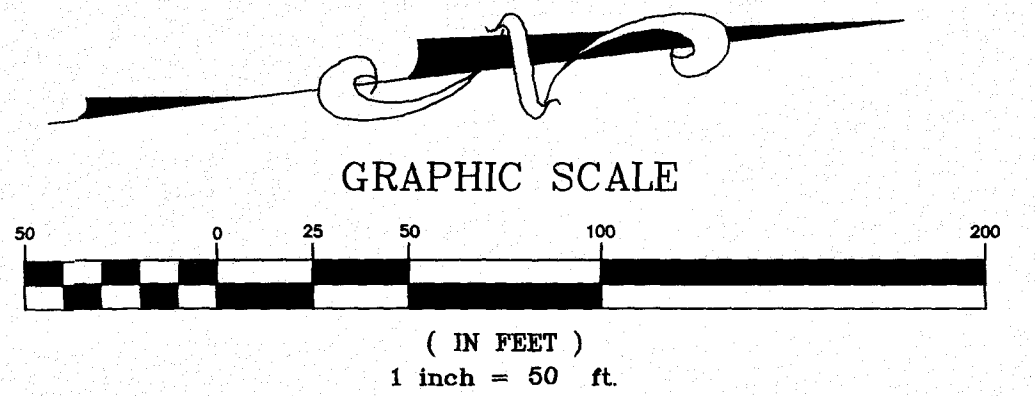


THE VILLAGES AT SHADY CREEK PLAT FOUR



LINE #	LENGTH	DIRECTION
L4	15.22'	S63°15'02"W
L5	15.22'	N63°15'02"E

CURVE #	LENGTH	RADIUS	CHORD BEARING	CHORD LENGTH	DELTA
C9	34.24'	25.00'	S24°01'08"W	31.62'	078°27'47"
C10	9.42'	6.00'	S89°03'44"E	8.49'	090°00'00"
C11	9.42'	6.00'	S00°56'18"W	8.49'	090°00'00"
C12	9.42'	6.00'	N71°44'58"W	8.49'	090°00'00"
C13	9.42'	6.00'	N18°15'02"E	8.49'	090°00'00"



HATCHING LEGEND:
 PUBLIC RIGHT-OF-WAY = [Hatched pattern]
 DETENTION BASIN DRAINAGE EASEMENT = [Hatched pattern]

LEGEND:
 ▲ = PERMANENT MONUMENT (IN ACCORDANCE WITH MO MINIMUM STANDARDS) (5/8" I.R.O.D W/ ALUMINUM CAP)
 ● = SEMI-PERMANENT MONUMENT (IN ACCORDANCE WITH MO MINIMUM STANDARDS) (1/2" I.R.O.D W/ ALUMINUM CAP)
 ⊕ = FOUND PERMANENT MONUMENT
 ⊙ = FOUND SEMI-PERMANENT MONUMENT
 ⊖ = SET PERMANENT MONUMENT IN PREVIOUS PLAT
 ⊕ = SET SEMI-PERMANENT MONUMENT IN PREVIOUS PLAT

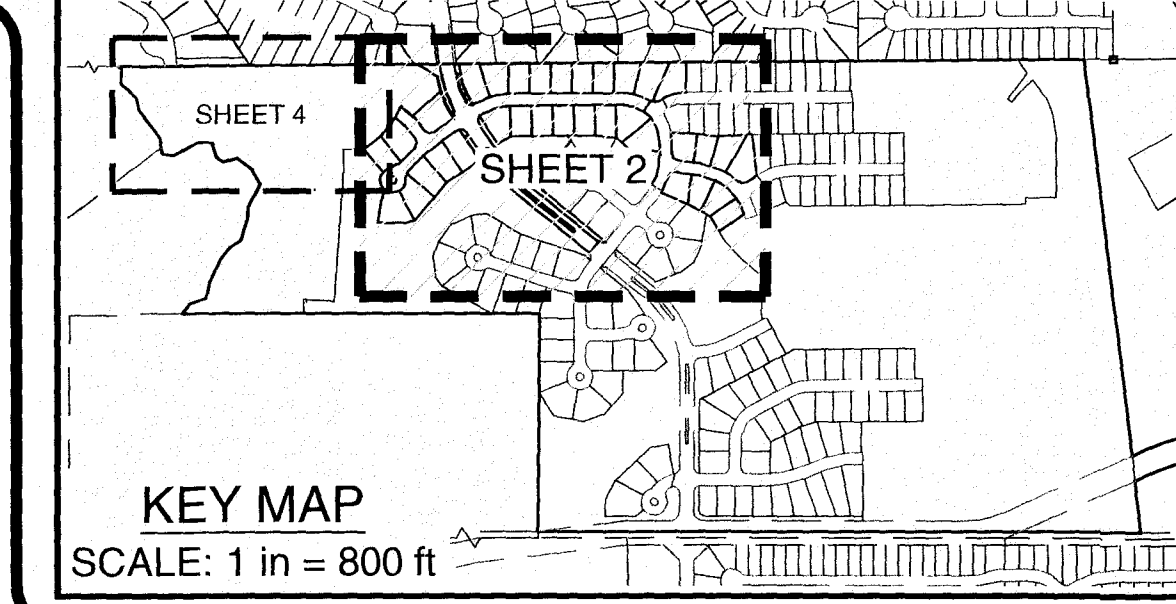
③23 = ADDRESS
 ⊕ = FOUND CROSS
 ⊕ = BENCHMARK
 C.G. = COMMON GROUND
 FND. = FOUND
 PAVT. = PAVEMENT
 ESMT. = EASEMENT
 BLDG. = BUILDING
 S.F. = SQUARE FEET

CURVE #	LENGTH	RADIUS	CHORD BEARING	CHORD LENGTH	DELTA
C1	74.63'	300.00'	N59°12'01"W	74.43'	014°15'10"
C2	35.41'	25.00'	N25°45'06"W	32.52'	081°09'00"
C3	112.17'	175.00'	S12°01'36"E	110.26'	036°43'34"
C4	31.11'	25.00'	S05°14'21"W	29.15'	071°16'44"
C5	14.63'	275.00'	S27°39'19"E	14.62'	003°02'51"
C6	35.08'	25.00'	S11°01'26"W	32.27'	080°24'21"
C7	35.57'	25.00'	S55°34'47"W	32.64'	081°30'45"
C8	31.05'	200.00'	N88°06'39"W	31.01'	008°53'38"

SURVEYOR'S CERTIFICATE:
 SEE SHEET 1 OF 3 FOR CERTIFICATION.
 THE STERLING COMPANY
 MO REG. 307-D
 JAMES A. HENSON, PLS
 MO REG. L.S. #2007017963
 10/3/17
 SHEET 2 OF 3

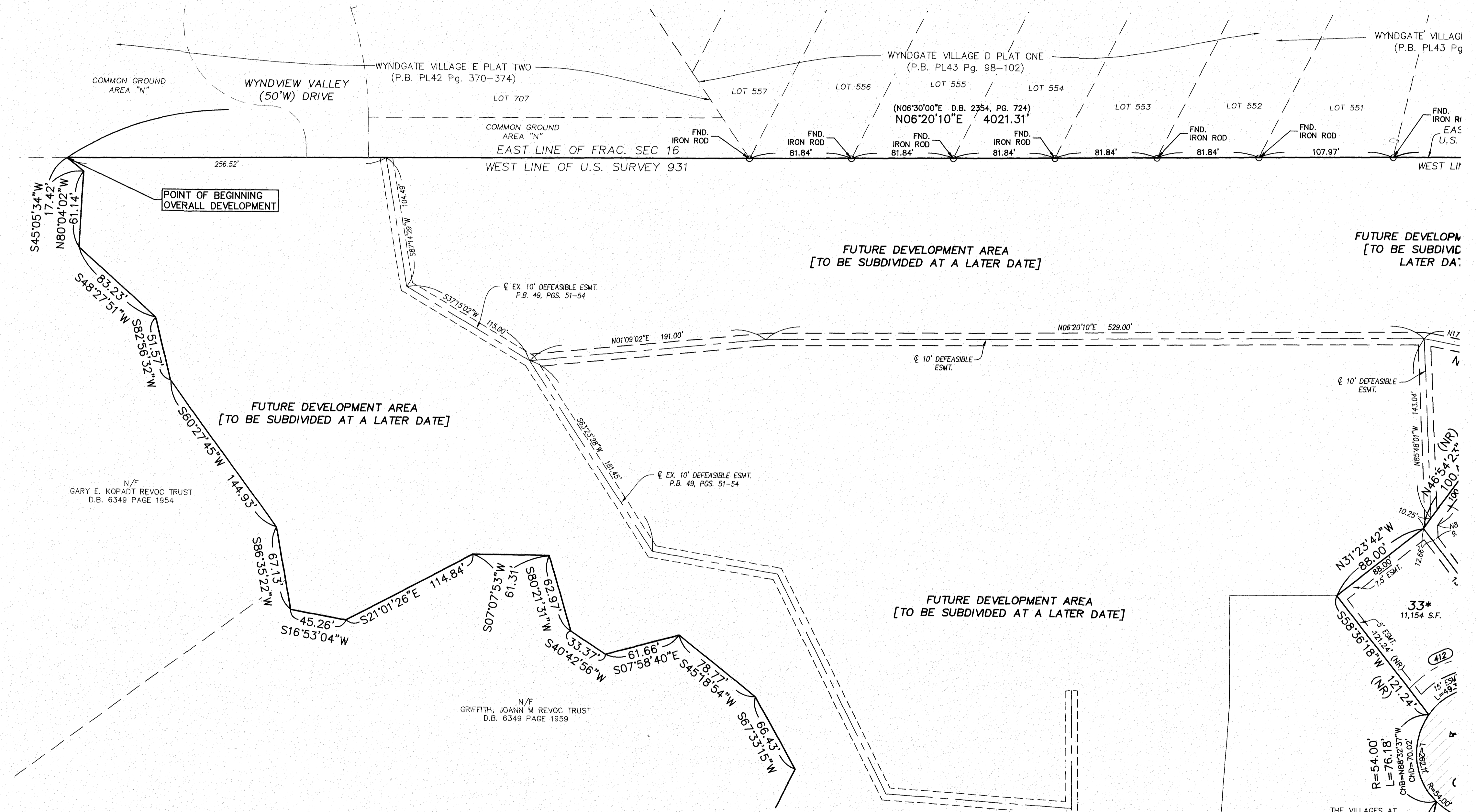
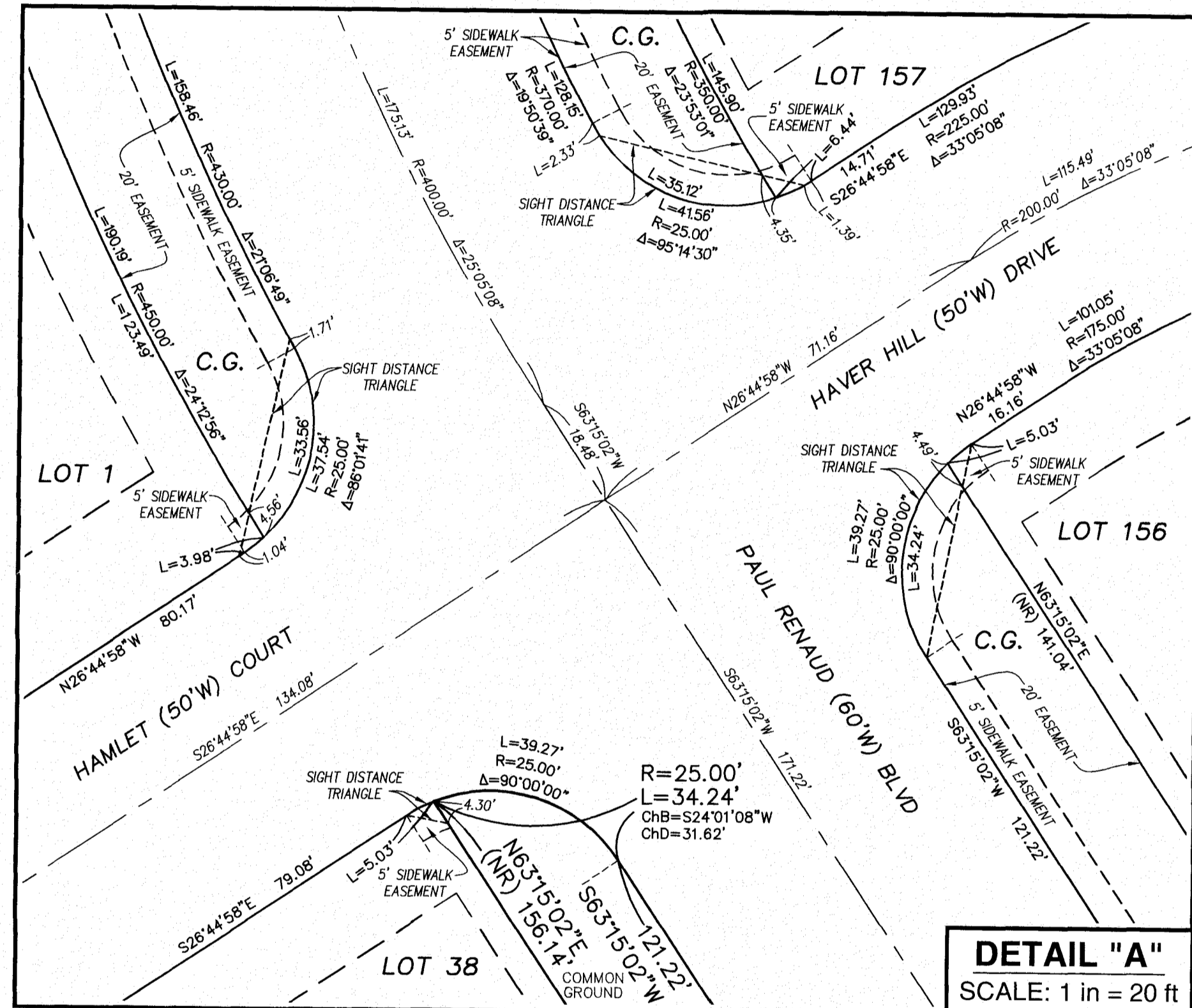
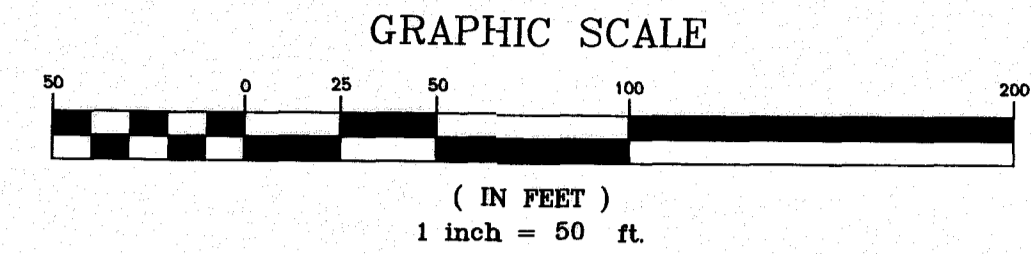
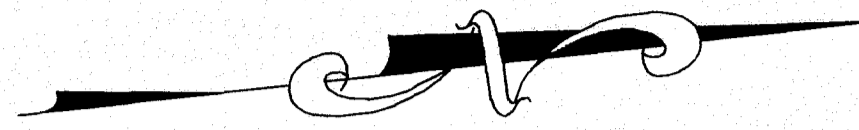
THE STERLING CO.
ENGINEERS & SURVEYORS
 5055 New Baumgartner Road
 St. Louis, Missouri 63129
 Ph. 314-487-0440 Fax 314-487-8944
 www.sterling-eng-sur.com

DRAWN BY:	GFS	MSD P#:	N/A
CHECKED BY:	JAH	DATE:	OCT. 3, 2017
JOB NO.:	14-03-087	THE VILLAGES AT SHADY CREEK	

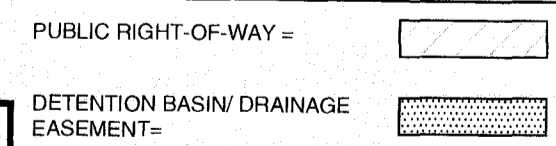


Drawing name: Y:\1403087\GRIFFITH\Drawings\Surveying\PlatBook\PlatBook.dwg Plotted on: Oct 03, 2017, 7:33am. Plotted by: gmsm

THE VILLAGES AT SHADY CREEK PLAT FOUR

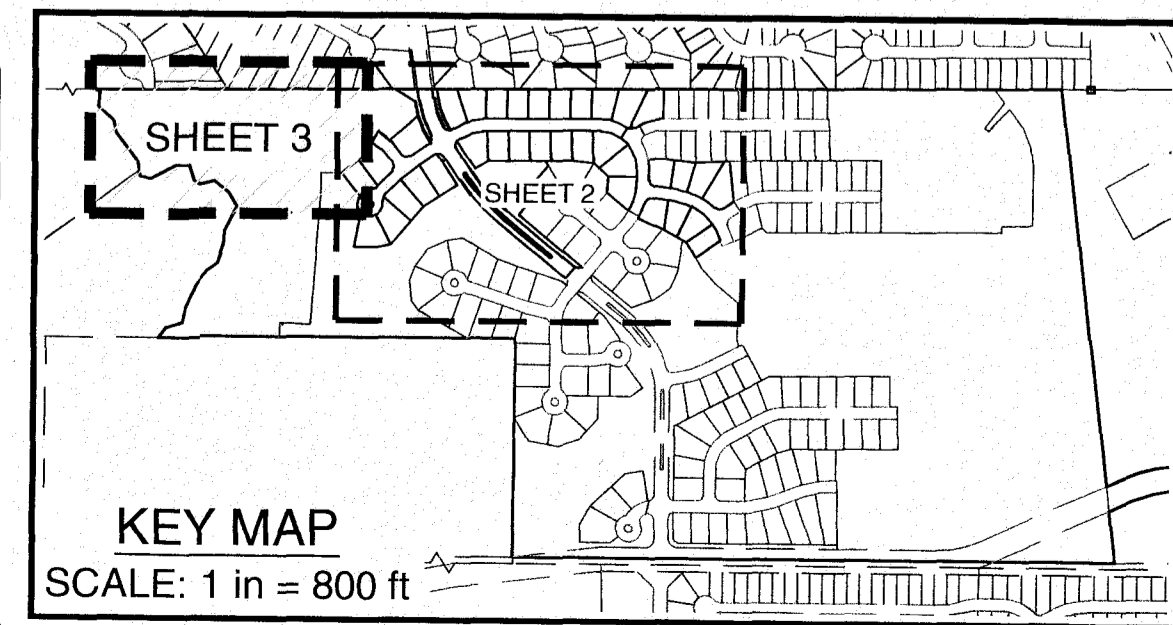


HATCHING LEGEND:



LEGEND:

- ▲ = PERMANENT MONUMENT (IN ACCORDANCE WITH MO MINIMUM STANDARDS) (5/8" I. ROD W/ ALUMINUM CAP)
- = SEMI-PERMANENT MONUMENT (IN ACCORDANCE WITH MO MINIMUM STANDARDS) (1/2" I. ROD W/ ALUMINUM CAP)
- = FOUND PERMANENT MONUMENT
- = FOUND SEMI-PERMANENT MONUMENT
- = SET PERMANENT MONUMENT IN PREVIOUS PLAT
- ⊛ = SET SEMI-PERMANENT MONUMENT IN PREVIOUS PLAT
- (523) = ADDRESS
- + = FOUND CROSS
- ⊕ = BENCH-MARK
- C.C. = COMMON GROUND
- FND. = FOUND
- P.W.T. = PAVEMENT
- ESMT. = EASEMENT
- BLDG. = BUILDING
- S.F. = SQUARE FEET



THE STERLING CO.
ENGINEERS & SURVEYORS
5055 New Baumgartner Road
St. Louis, Missouri 63129
Ph. 314-487-0440 Fax 314-487-8944
www.sterling-eng-sur.com

DRAWN BY:	GFS	MSD P# - N/A
CHECKED BY:	JAH	DATE: OCT. 3, 2017
JOB NO.:	14-03-087	THE VILLAGES AT SHADY CREEK

SURVEYOR'S CERTIFICATE:

SEE SHEET 1 OF 3 FOR CERTIFICATION.

THE STERLING COMPANY
MO REG. 307-D

J. A. Henson
JAMEY A. HENSON, PLS
MO REG. L.S. #2007017963

