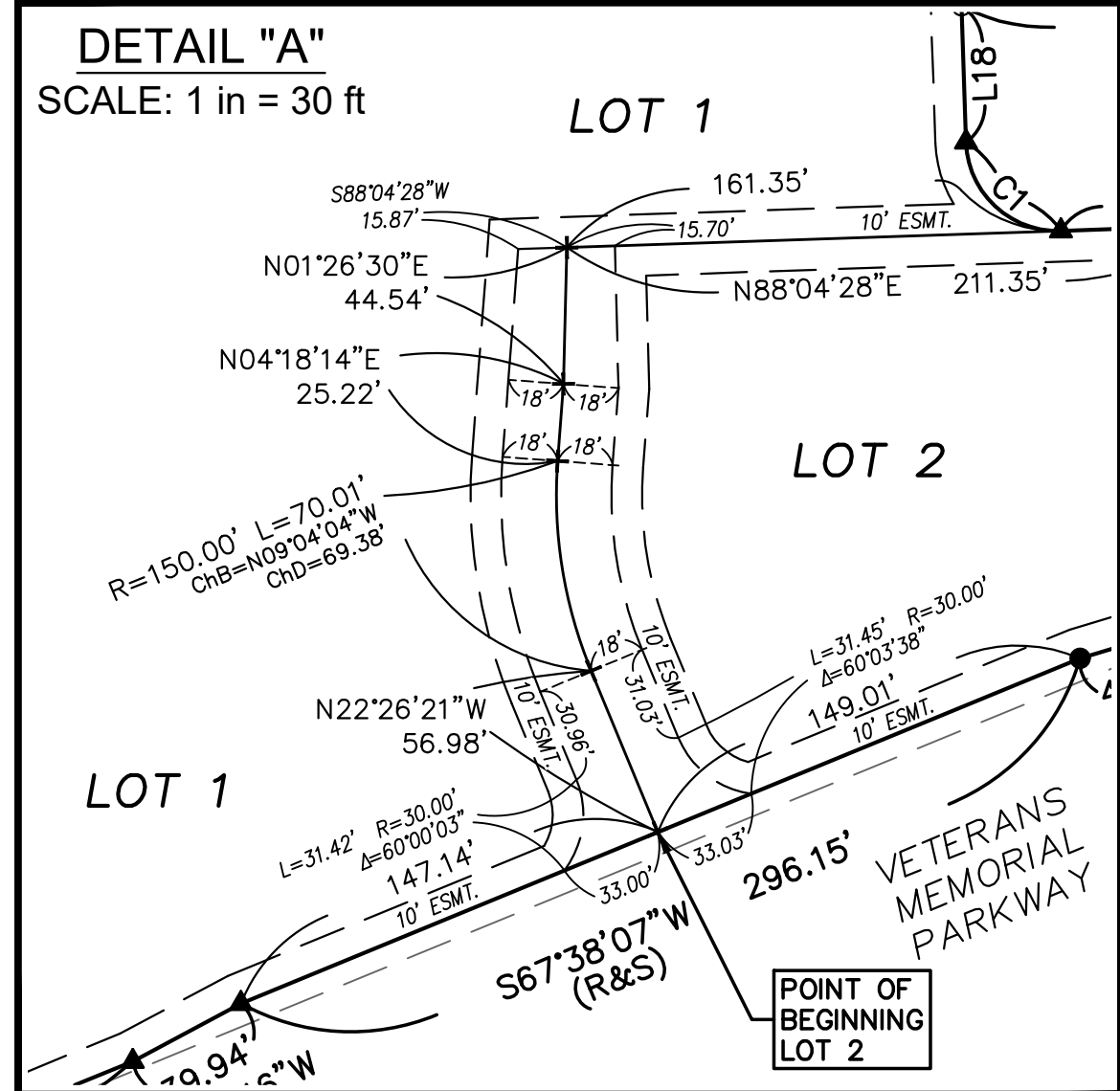


VILLAGES OF ARAGON

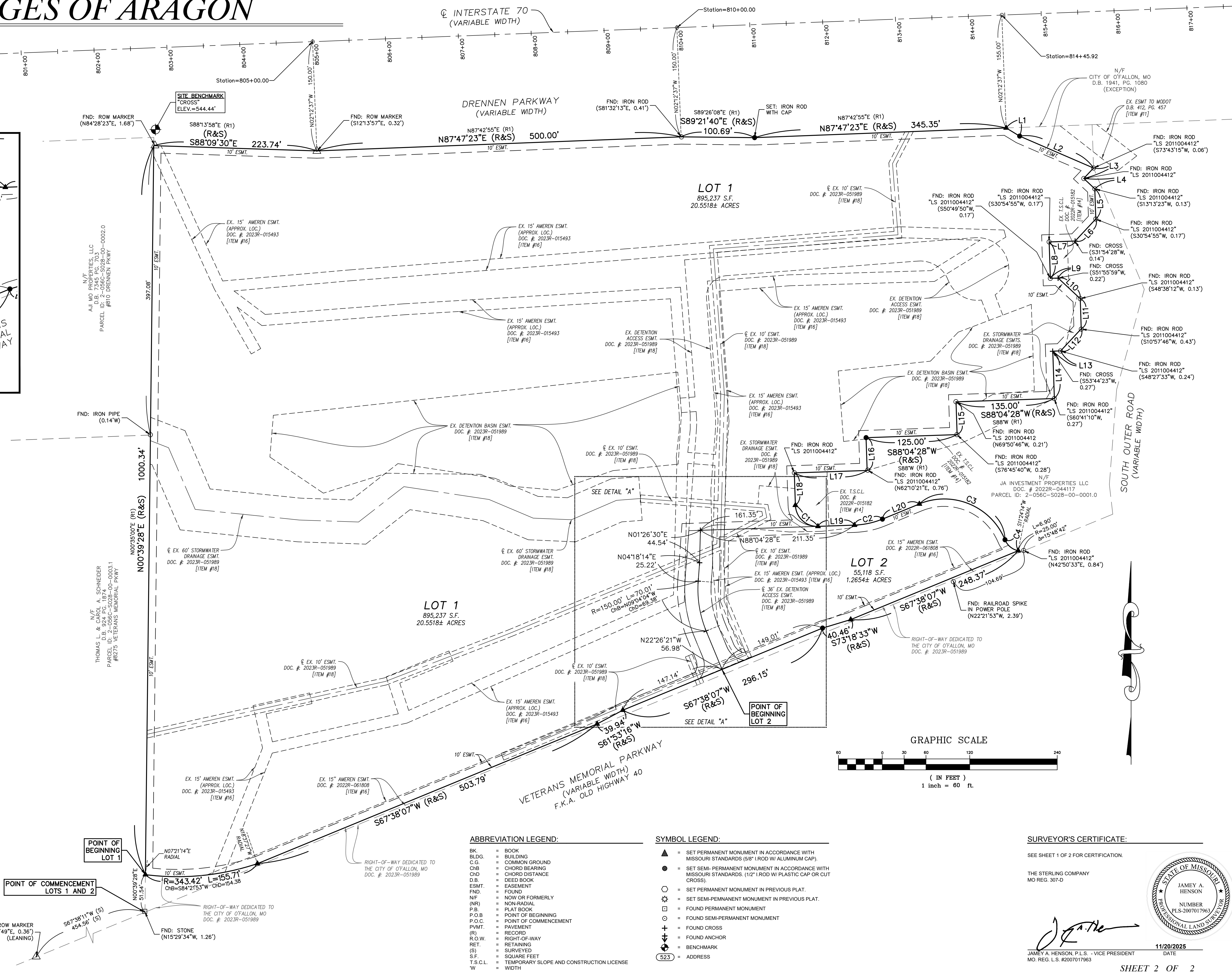


LINE TABLE		
#	LENGTH (R&S)	DIRECTION (R&S)
L1	21.56'	S58°41'23"E / S58°37'04"E (R2)
L2	110.49' (R2&S) 21.56' (R)	S66°41'23"E (S) S58°41'23"E (R) S66°37'04"E (R2)
L3	19.71'	S43°04'28"W / S43°W (R1)
L4	20.70'	S46°55'32"E / S47°E (R1)
L5	41.42'	S01°55'32"E / S02°E (R1)
L6	41.42'	S43°04'28"W / S43°W (R1)
L7	35.72'	S88°04'28"W / S88°W (R1)
L8	50.00'	S01°55'32"E / S02°E (R1)
L9	10.71'	N88°04'28"E / N88°E (R1)
L10	41.42' (R1&S) 41.40' (R)	S46°55'32"E (S) S47°00'00"E (R) S47°E (R1)
L11	41.42'	S01°55'32"E / S02°E (R1)
L12	41.42'	S43°04'28"W / S43°W (R1)
L13	10.71'	S88°04'28"W / S88°W (R1)
L14	65.00' (R1&S) 41.42' (R1)	S01°55'32"E / S02°E (R1)
L15	45.00'	S01°55'32"E / S02°E (R1)
L16	45.00'	S01°55'32"E / S02°E (R1)
L17	100.00'	S88°04'28"W / S88°W (R1)
L18	44.40'	S01°55'32"E / S02°E (R1)
L19	50.00'	N88°04'28"E / N88°E (R1)
L20	54.80' (S&R1) 51.80' (R)	N67°42'28"E N67°38'E (R1)

CURVE TABLE (R&S)				
#	LENGTH	RADIUS	Ch. BEARING	DELTA
C1	47.12'	30.00'	S46°55'32"E	42.43°
C2	39.46'	111.01'	N77°53'28"E	39.25°
C3	141.37'	90.00'	S67°17'32"E	127.28°
C4	24.57'	25.00'	S50°26'39"E	23.59°

THE STERLING CO.
ENGINEERS & SURVEYORS
5055 New Baumgartner Road
St. Louis, Missouri 63129
Ph. 314-487-0440 Fax 314-487-8944
www.sterling-eng-sur.com

DRAWN BY:	GFS	MSD P# - N/A
CHECKED BY:	JAH	DATE: NOV. 20, 2025
JOB NO.:	20-09-342	MINOR SUBDIVISION PLAT



ABBREVIATION LEGEND:

BK. = BOOK
BLDG. = BUILDING
C.G. = COMMON GROUND
CHB. = CHORD BEARING
CHD. = CHORD DISTANCE
D.B. = DEED BOOK
ESMT. = EASEMENT
FND. = FOUND
N/F. = NOW OR FORMERLY
(NR) = NON-RADIAL
P.B. = PLAT BOOK
P.O.B. = POINT OF BEGINNING
P.O.C. = POINT OF COMMENCEMENT
P.V.M.T. = PAVEMENT
(R) = RECORD
R.O.W. = RIGHT-OF-WAY
RET. = RETAINING
(S) = SURVEYED
S.F. = SQUARE FEET
T.S.C.L. = TEMPORARY SLOPE AND CONSTRUCTION LICENSE
W. = WIDTH

SYMBOL LEGEND:

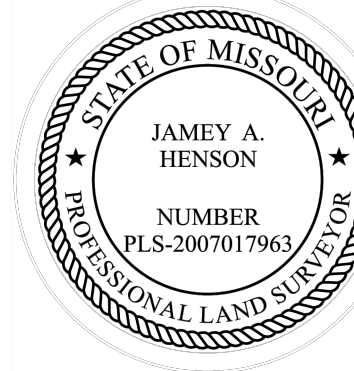
▲ = SET PERMANENT MONUMENT IN ACCORDANCE WITH MISSOURI STANDARDS (5/8" I.R.O.D W/ ALUMINUM CAP).
● = SET SEMI-PERMANENT MONUMENT IN ACCORDANCE WITH MISSOURI STANDARDS (1/2" I.R.O.D W/ PLASTIC CAP OR CUT CROSS).
○ = SET PERMANENT MONUMENT IN PREVIOUS PLAT.
⊕ = SET SEMI-PERMANENT MONUMENT IN PREVIOUS PLAT.
□ = FOUND PERMANENT MONUMENT
⊙ = FOUND SEMI-PERMANENT MONUMENT
+ = FOUND CROSS
⬇ = FOUND ANCHOR
⬆ = BENCHMARK
523 = ADDRESS

SURVEYOR'S CERTIFICATE:

SEE SHEET 1 OF 2 FOR CERTIFICATION.

THE STERLING COMPANY
MO REG. 307-D

JAMEY A. HENSON, P.L.S. - VICE PRESIDENT
MO REG. L.S. #2007017963



11/20/2025
DATE
SHEET 2 OF 2