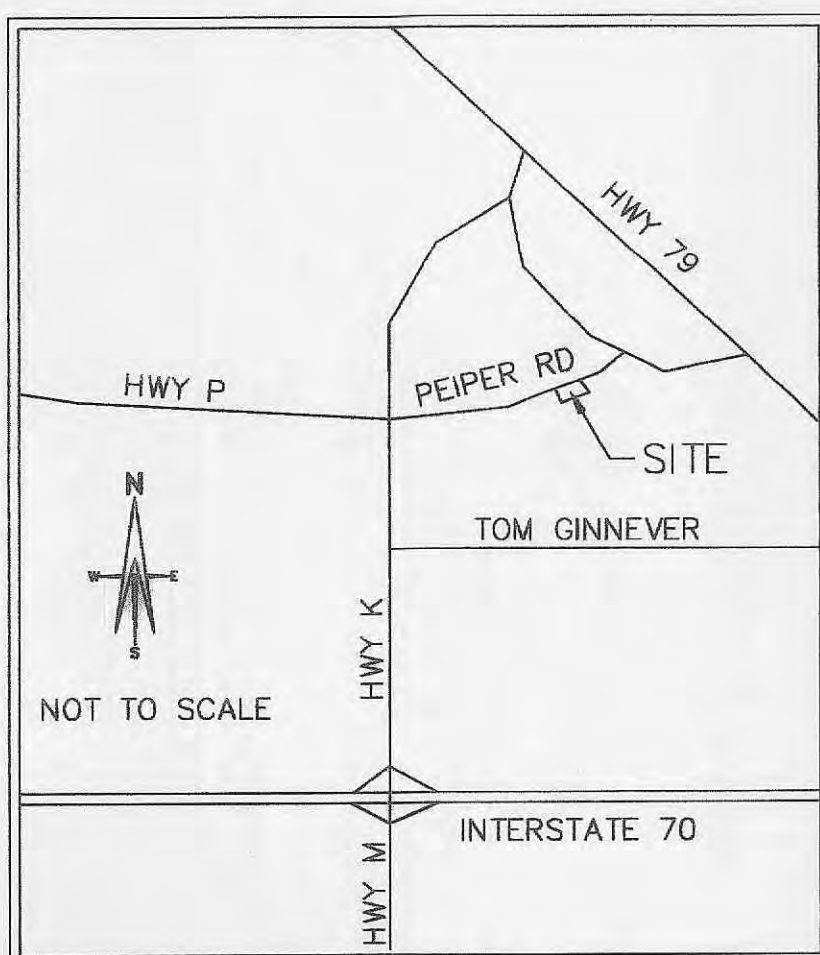


AS-BUILTS FOR HOMEFIELD SQUARE - VILLAGE P

A TRACT OF LAND IN FRACTIONAL SECTION 16,
TOWNSHIP 47 NORTH, RANGE 3 EAST
ST. CHARLES COUNTY, MISSOURI



LOCATION MAP

DEVELOPMENT NOTES

1. AREA OF TRACT 12.23 ACRES
2. SITE SERVED BY:

CITY OF O'FALLON SEWER DISTRICT
AMERENUE ELECTRIC COMPANY
ST. CHARLES GAS COMPANY
CITY OF O'FALLON WATER
VERISON TELEPHONE COMPANY
FORT ZUMWALT SCHOOL DISTRICT
O'FALLON FIRE PROTECTION DISTRICT

BENCHMARK

U.S.G.S.
Chiseled L on concrete hub rail at southwest corner of State Hwy
79 bridge over Peruque Creek.
Elev = 458.14

SITE
Old stone at the northeast corner of Lot 16 of "Lakeside Manor,"
as recorded in Plat Book 33, Pages 216-217.
Elev. = 515.07

SHEET INDEX

COVER SHEET	1
FLAT PLAN	2
SANITARY SEWER PROFILES	3
STORM SEWER PROFILES	4

PREPARED FOR:

T.R. HUGHES INC.
239 FOX HILL ROAD
ST. CHARLES, MO. 63301

5/14/05
File Copy
APPROVED
ABC

THE EXISTING SEWER LENGTHS, SIZES, FLOWLINES, DEPTHS OF
STRUCTURES AND SEWERS AND LOCATIONS WITH RESPECT TO
EXISTING OR PROPOSED EASEMENTS HAVE BEEN MEASURED. THE
RESULTS OF THOSE MEASUREMENTS ARE SHOWN ON THIS SET OF
AS-BUILT PLANS. SINCE THE WYE LOCATIONS HAVE BEEN PLOTTED
FROM INFORMATION PROVIDED BY THE SEWER CONTRACTOR OR
OTHER SOURCES, I DISCLAIM ANY RESPONSIBILITY FOR THAT
SPECIFIC INFORMATION.

ST. CHARLES ENGINEERING AND SURVEYING, INC.

Michael W. Meiners 5/14/02

MICHAEL NEWELL MEINERS
MISSOURI PROFESSIONAL ENGINEER NUMBER E-22483

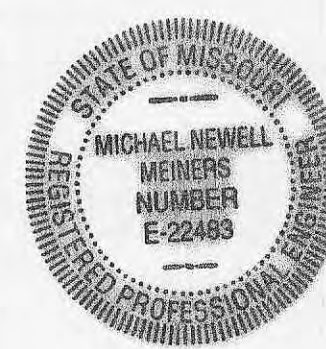
REVISED PER CITY COMMENTS

5-6-02

AS-BUILTS FOR
HOMEFIELD SQUARE
VILLAGE "P"

ST. CHARLES ENGINEERING & SURVEYING, INC.
801 S. FIFTH STREET, SUITE 202
ST. CHARLES, MO 63301
TEL: (636) 947-0607 FAX: (636) 947-2446

SE



ORDER NO.

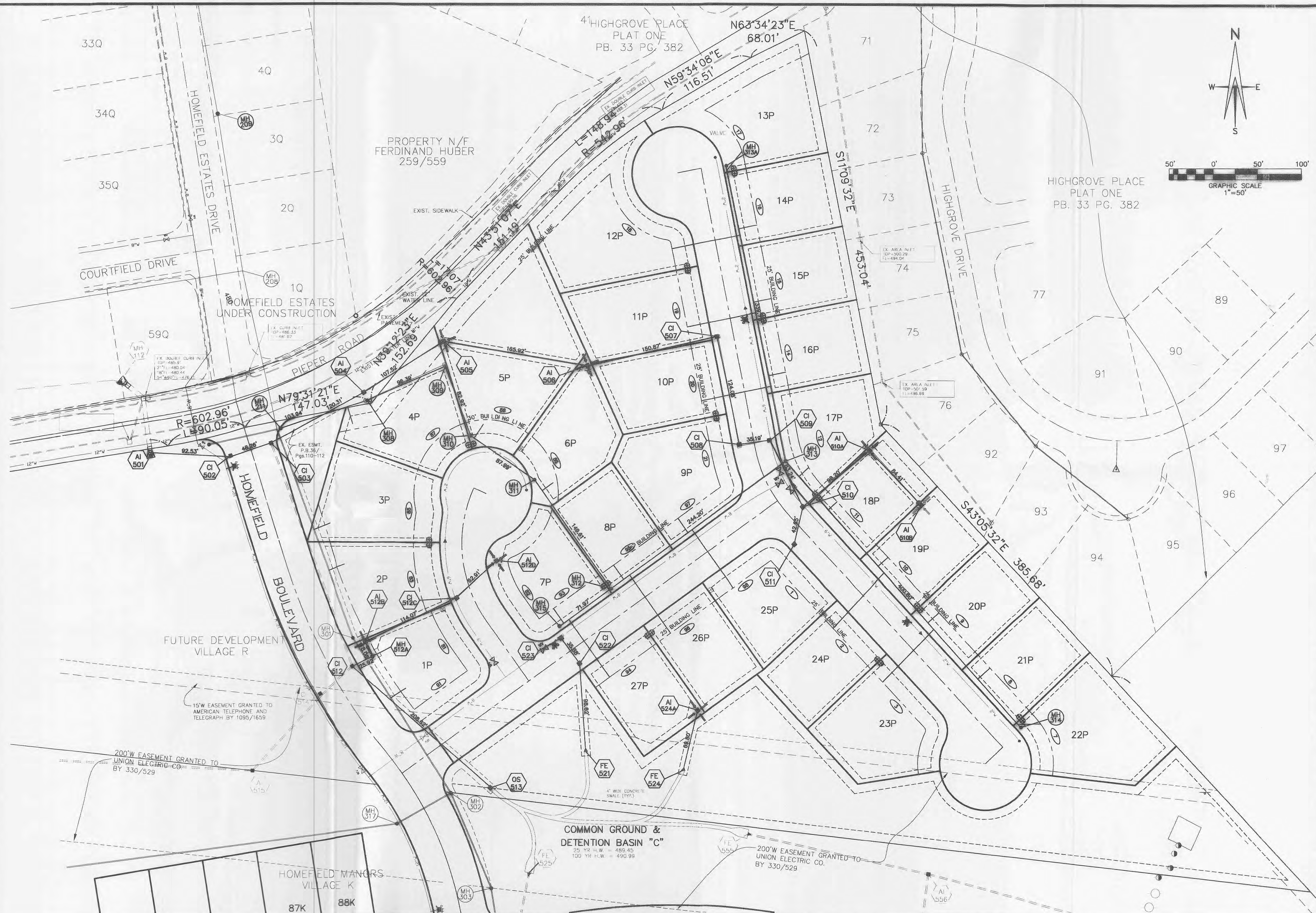
01-0428

DATE

10/1/01

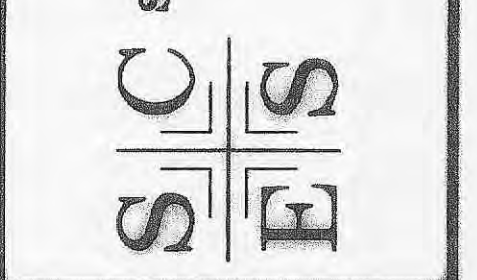
1 of 4

RECEIVED
APR 13 2005

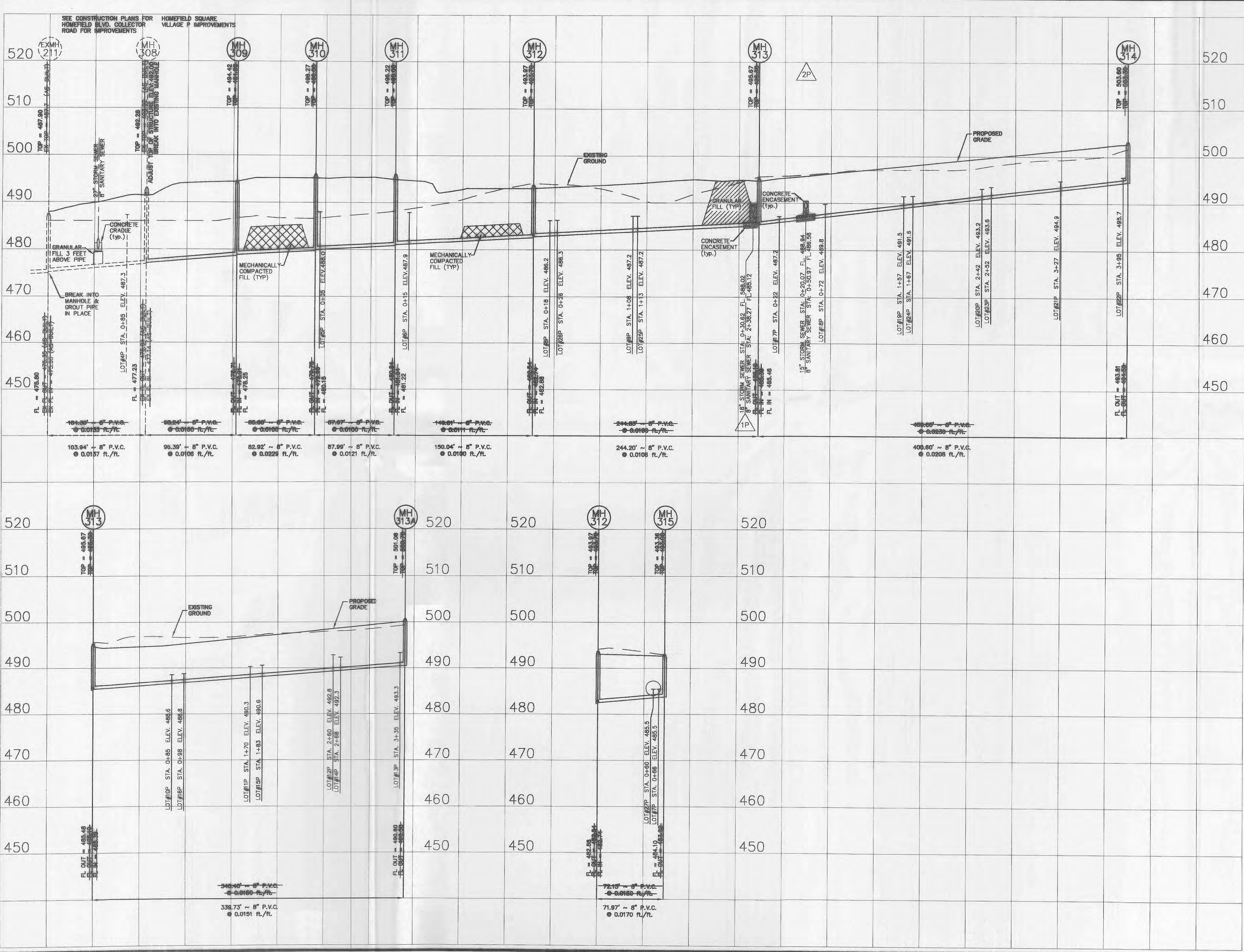


AS-BUILTS FOR
HOMEFIELD SQUARE
VILLAGE "P" SANITARY
AND STORM SEWERS

ST. CHARLES ENGINEERING & SURVEYING, INC.
801 S. FIFTH STREET, SUITE 202
ST. CHARLES, MO 63301
TEL: (636) 947-0607 FAX: (636) 947-2448



ORDER NO. 01-0428
DATE 10/1/01
2 of 4



SCALE:
1" = 10' VERTICAL
1" = 50' HORIZONTAL

5-6-02

REVISED PER CITY COMMENTS

AS-BUILTS FOR
HOMEFIELD SQUARE
VILLAGE "P"
SANITARY SEWERS

ST. CHARLES ENGINEERING & SURVEYING, INC.
801 S. FIFTH STREET, SUITE 202
ST. CHARLES, MO 63301
TEL: (636) 947-0607 FAX: (636) 947-2448

S

C

E

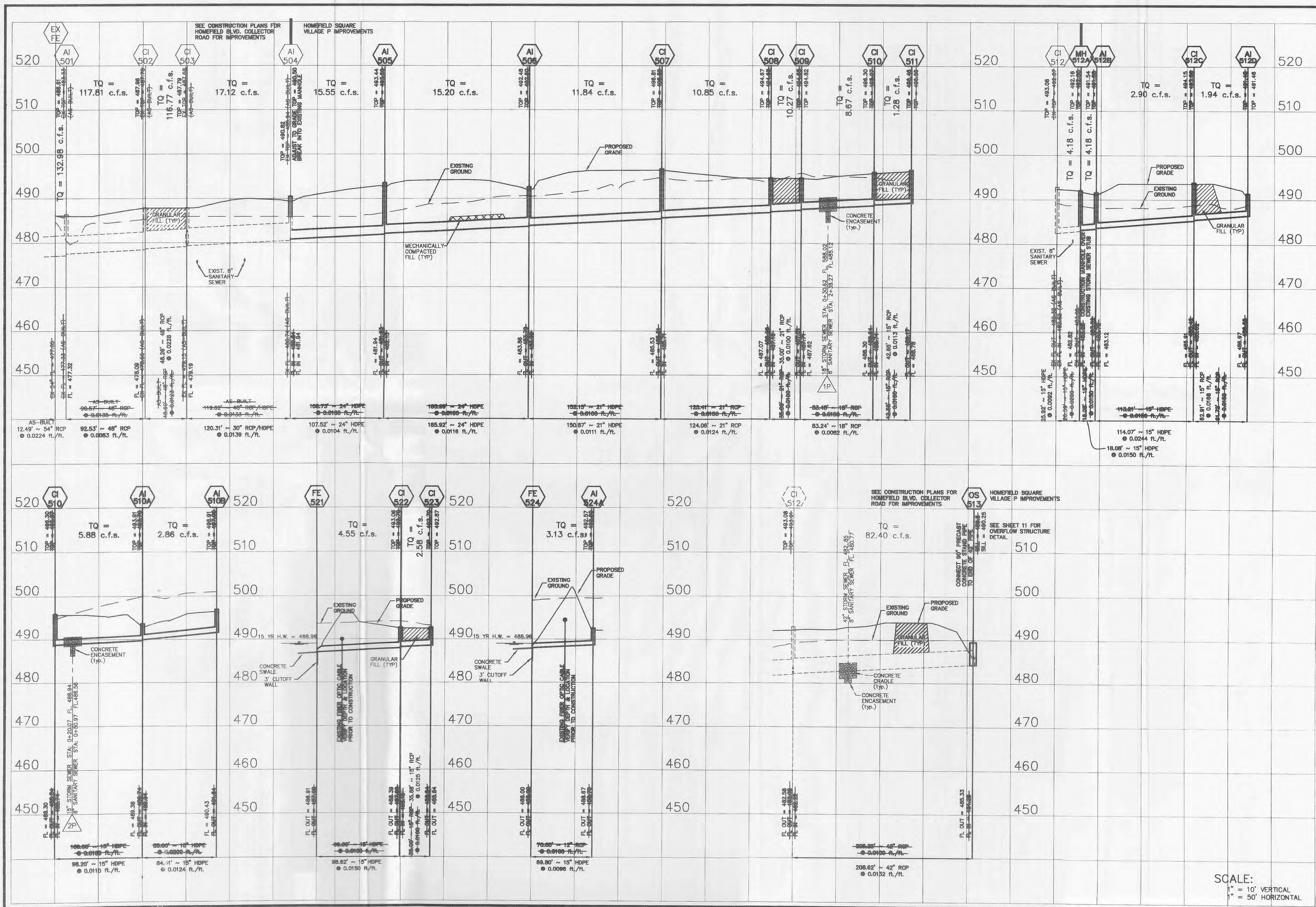
S

STATE OF MISSOURI
MICHAEL NEWELL
ENGINEER
NUMBER
E-22483

ORDER NO.
01-0428

DATE
09/06/01

3 of 4



5-4-02 REVISED PER CITY COMMENTS

AS-BUILTS FOR HOMEFIELD SQUARE VILLAGE "P" STORM SEWERS

ST. CHARLES ENGINEERING & SURVEYING, INC.
801 S. FIFTH STREET, SUITE 202
ST. CHARLES, MO 63301
TEL: (636) 947-0607 FAX: (636) 947-2448



ORDER NO.
01-0428
DATE
09/06/01
4 of 4

SCALE:
1" = 10' VERTICAL
1" = 50' HORIZONTAL