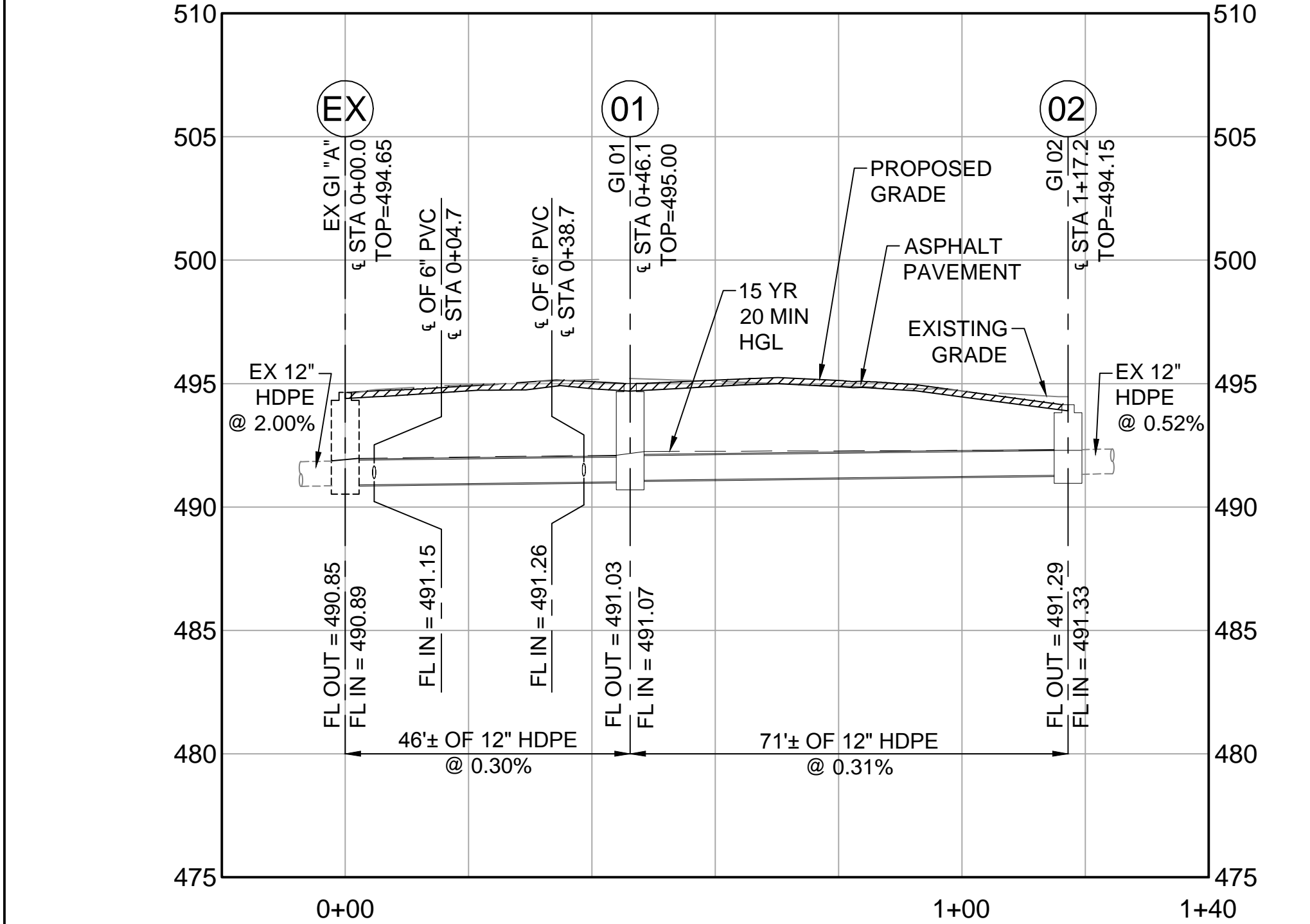
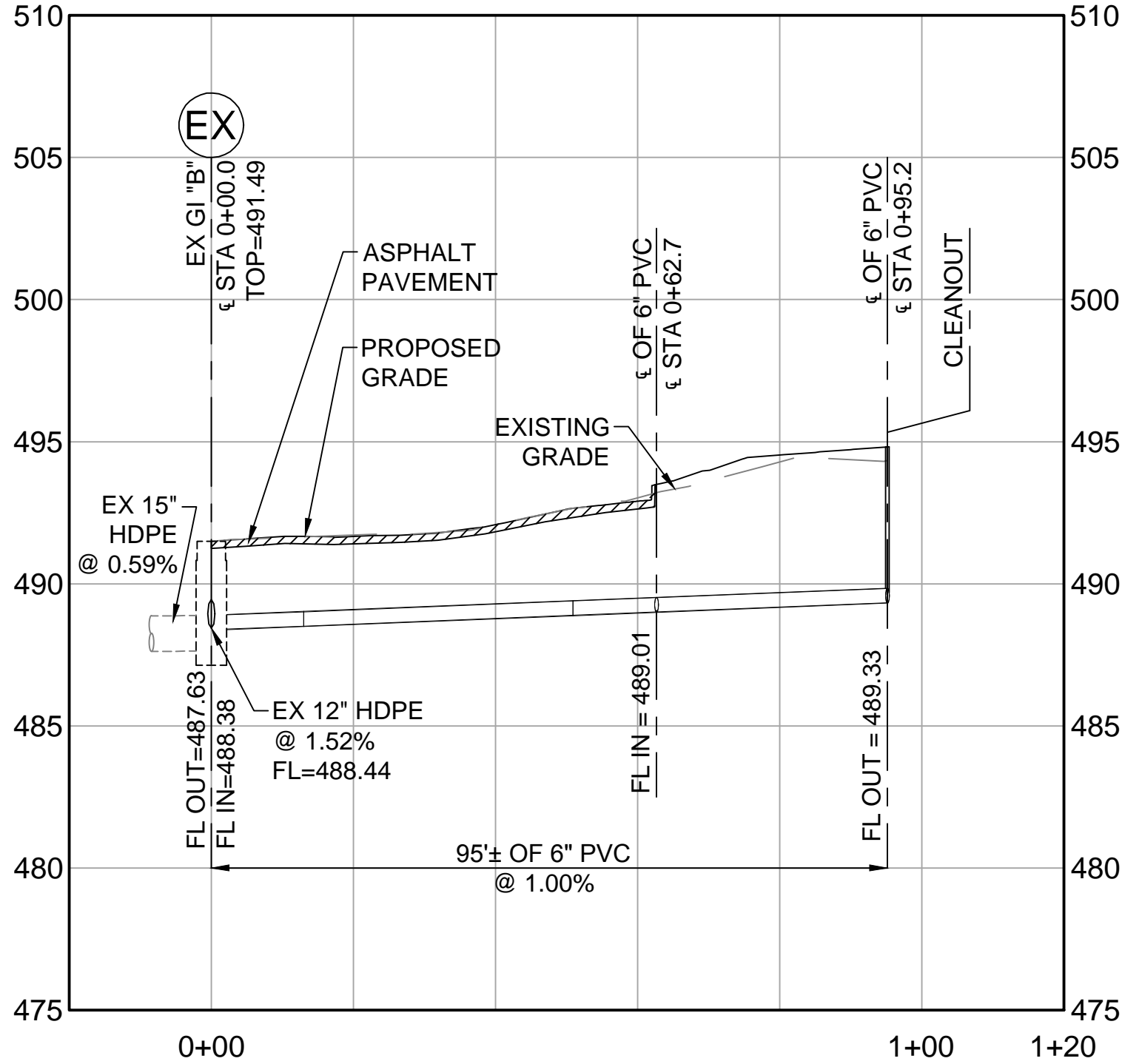


THIS DRAWING IS THE PROPERTY OF BILFINGER INDUSTRIAL SERVICES, INC. AND IS NOT TO BE REPRODUCED OR TRANSMITTED IN ANY FORM OR BY ANY MEANS, ELECTRONIC OR MECHANICAL, WITHOUT THE WRITTEN PERMISSION OF BILFINGER INDUSTRIAL SERVICES, INC. ANY UNAUTHORIZED REPRODUCTION OR TRANSMISSION OF THIS DRAWING IS PROHIBITED. THE USER SHALL BE RESPONSIBLE FOR OBTAINING ALL NECESSARY PERMITS AND FOR THE PROPER FORM AND CONTENT OF ANY SUBMITTALS. IT SHALL NOT BE USED FOR ANY OTHER PROJECTS WITHOUT THE WRITTEN PERMISSION OF BILFINGER INDUSTRIAL SERVICES, INC. EXCEPT IN ACCORDANCE WITH THE TERMS OF ANY AGREEMENT UNDER WHICH IT WAS SUPPLIED OR WITH THE WRITTEN CONSENT OF THE COMPANY, AND SHALL BE RETURNED UPON REQUEST.



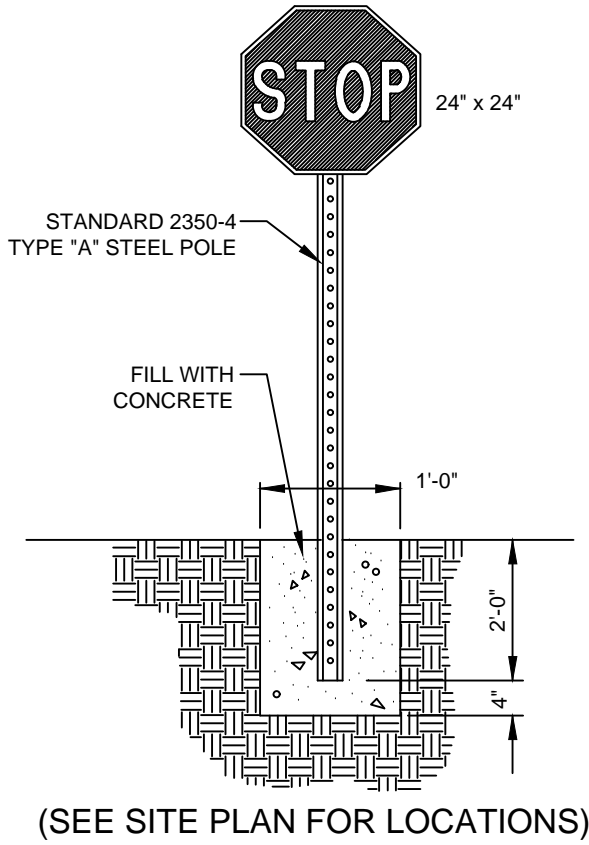
**STORM BRANCH 01 PROFILE
(PRIVATE)**

HORIZ: 1" = 20'
VERT: 1" = 5'



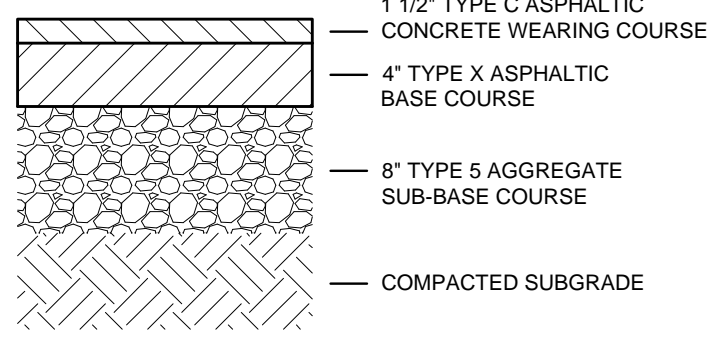
**STORM BRANCH 02 PROFILE
(PRIVATE)**

HORIZ: 1" = 20'
VERT: 1" = 5'



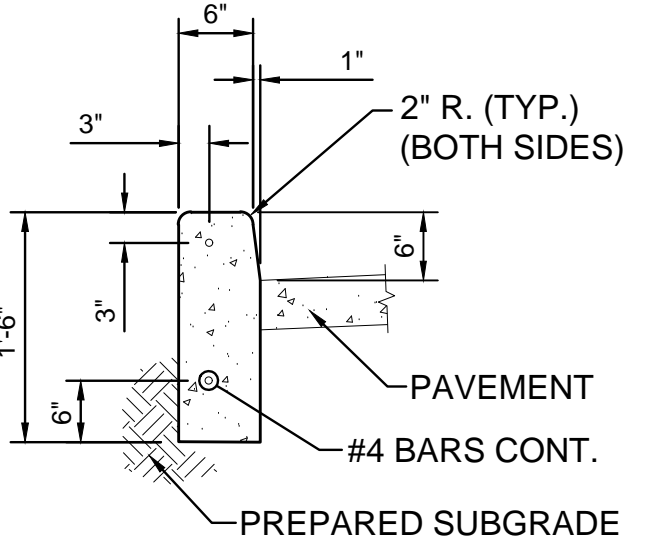
STOP SIGN TO BE INSTALLED PER THE 2009 MANUAL OF UNIFORM TRAFFIC CONTROL DEVICES. THE POST AND BACK OF SIGN ARE TO BE PAINTED BLACK.

**RELOCATED STOP SIGN
NOT TO SCALE**



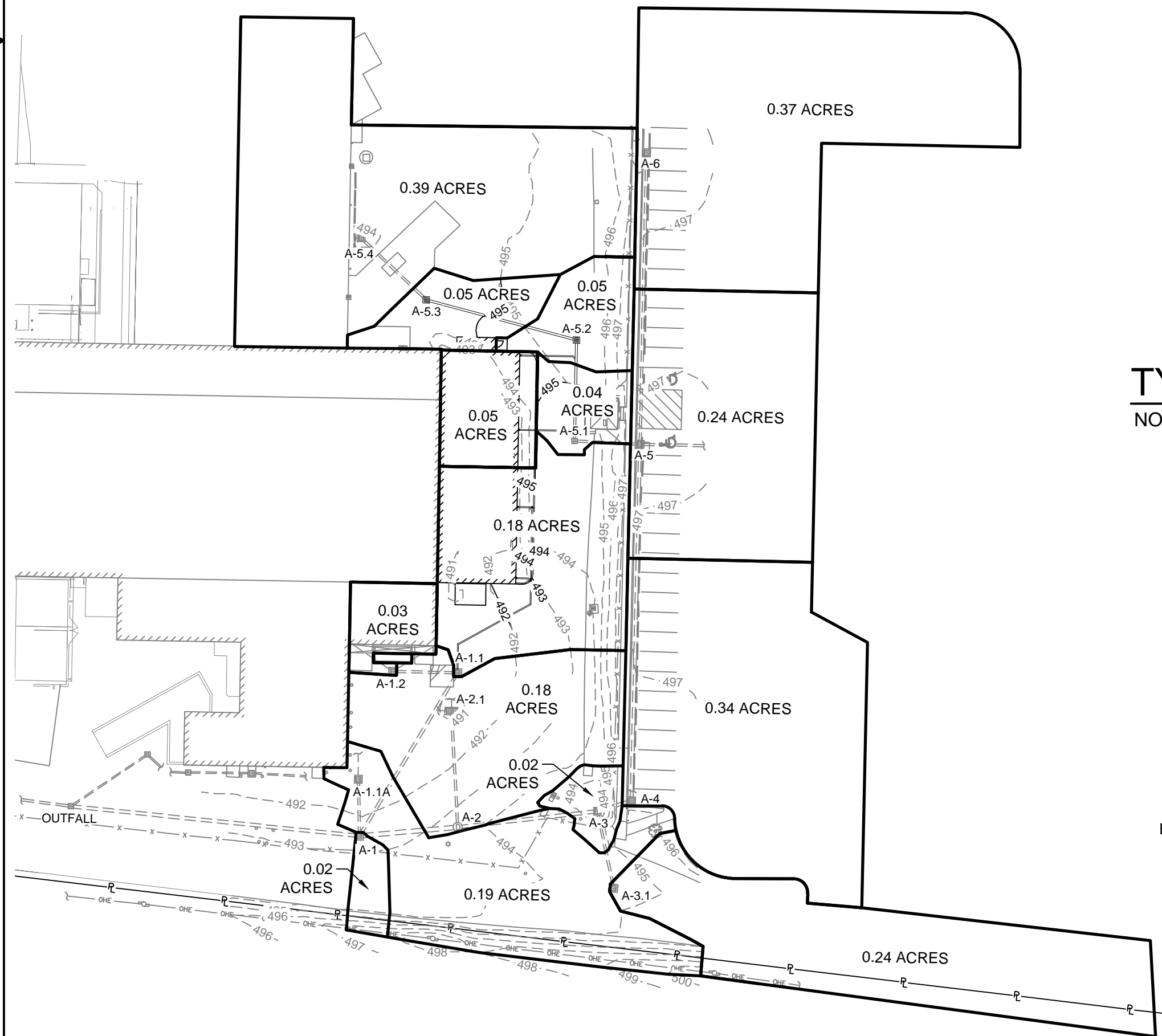
NOTE: ASPHALT SHALL BE COMPACTED TO 98% MAX. DENSITY

**ASPHALT PAVEMENT
NOT TO SCALE**

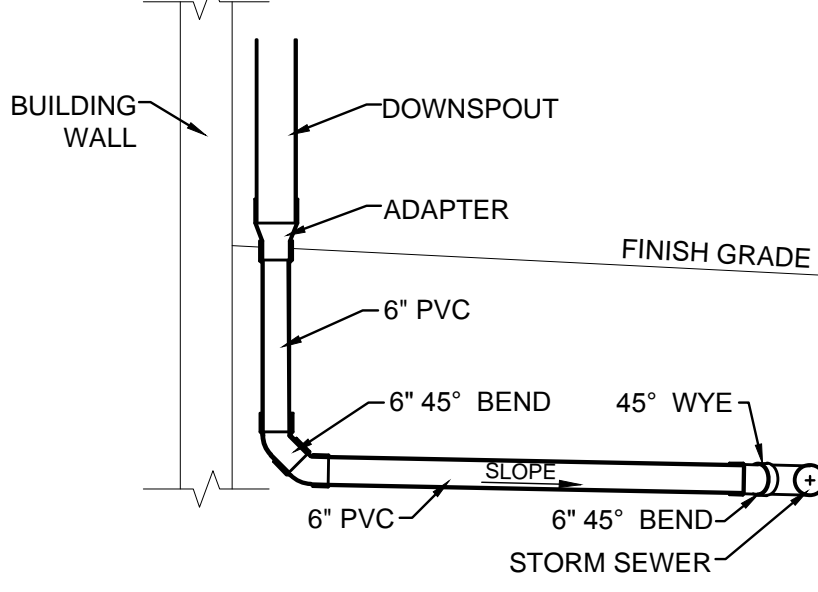


ALL CONCRETE SHALL BE 4000 PSI @ 28 DAYS

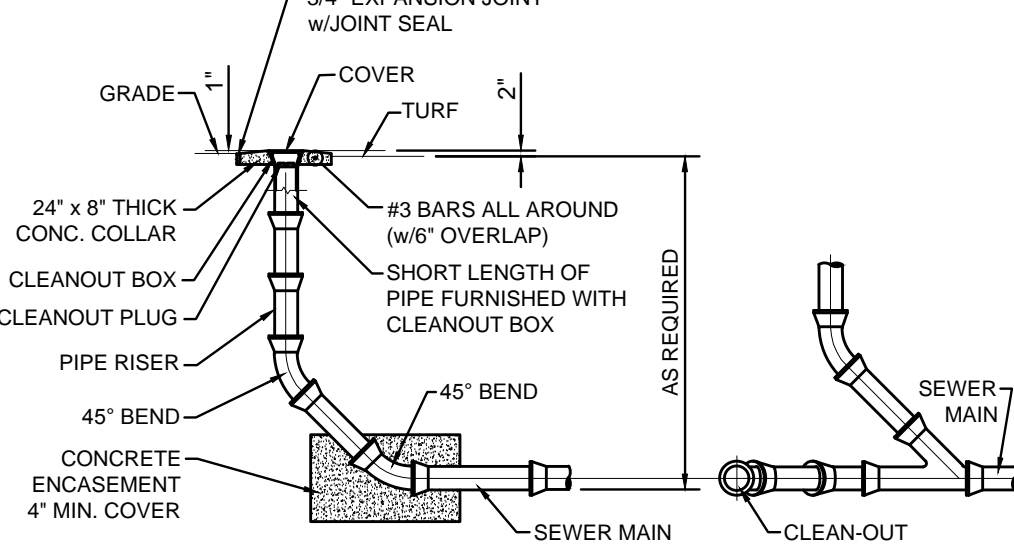
**CONCRETE VERTICAL CURB
NOT TO SCALE**



**DRAINAGE AREA MAP
SCALE: 1" = 50'**

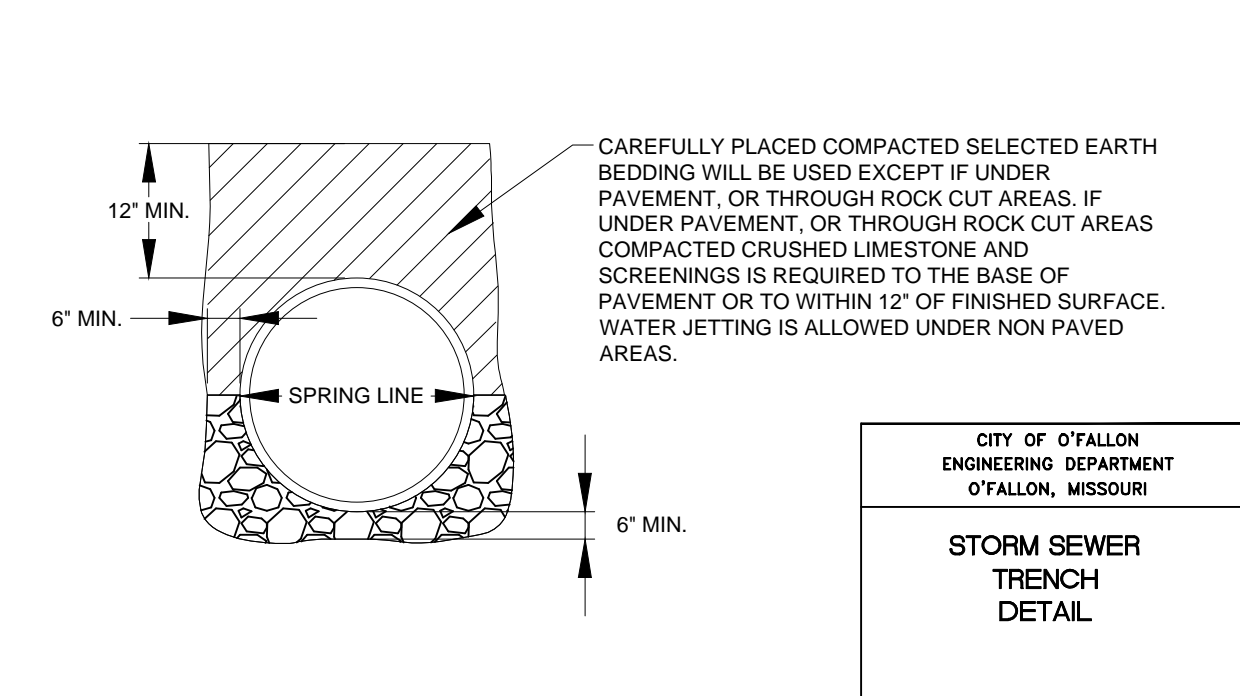


**TYPICAL DOWNSPOUT CONNECTION
NOT TO SCALE**

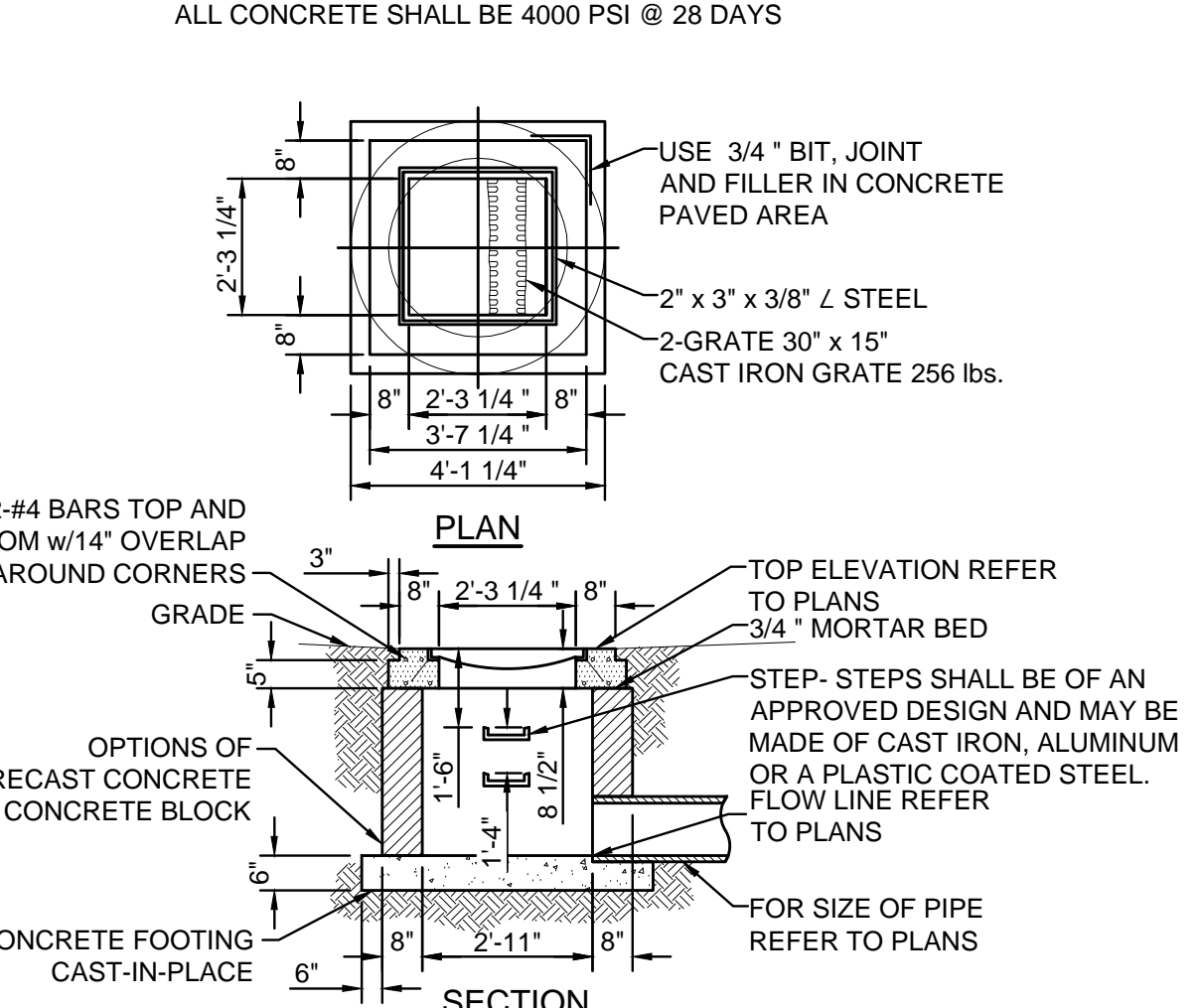


**ELEVATION
NOT TO SCALE**

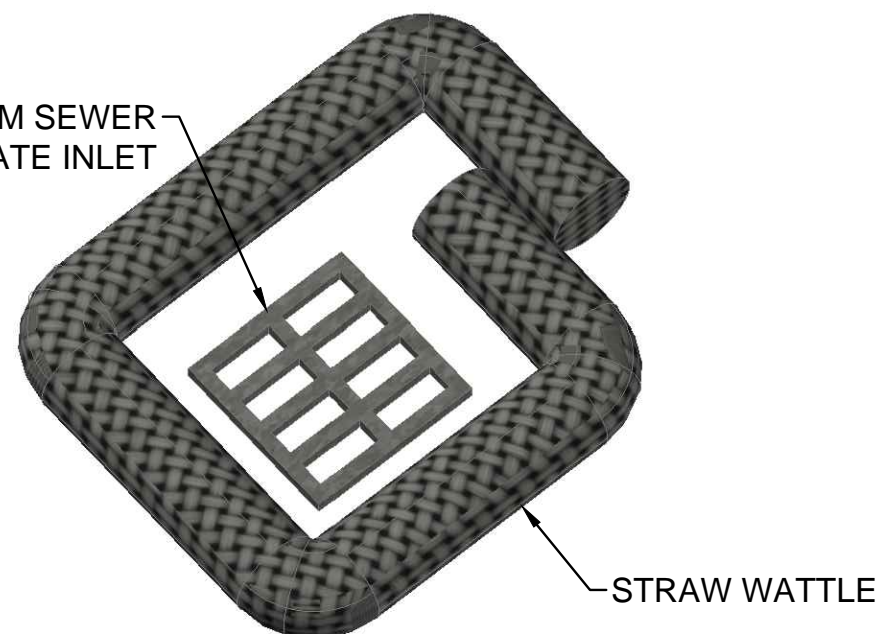
**PLAN
NOT TO SCALE**



**PIPE TRENCH DETAIL
NOT TO SCALE**



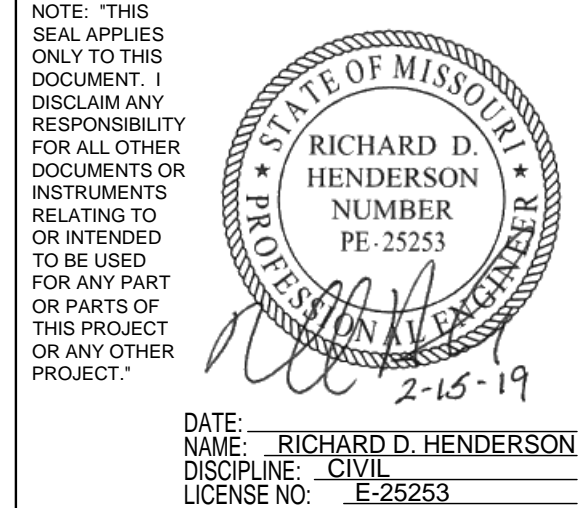
**GRATE INLET DETAIL
NOT TO SCALE**



**INLET PROTECTION
NOT TO SCALE**

18091P 788169	0	JMM	ISSUED FOR CONSTRUCTION	02/15/19
------------------	---	-----	-------------------------	----------

REV.	BY	DESCRIPTION	DATE
------	----	-------------	------



MEMC
A GLOBALWAFERS COMPANY

MEMC LLC
A GLOBALWAFERS COMPANY
501 PEARL DRIVE PO BOX 8
ST. PETERS (CITY OF O'FALLON), MO
63376

MEMC LLC. CONFIDENTIAL

THIS DRAWING IS THE CONFIDENTIAL PROPERTY OF MEMC LLC. ("MEMC") AND IS TO BE USED ONLY BY AUTHORIZED PERSONNEL AND IN THE INTEREST OF MEMC IT MUST BE ACCOUNTED FOR. IT SHALL NOT BE REPRODUCED IN WHOLE OR IN PART WITHOUT PRIOR WRITTEN PERMISSION FROM MEMC. IT MUST BE RETURNED TO MEMC AT ANY TIME UPON REQUEST BUT IN ANY EVENT AT COMPLETION OF THE WORK OR JOB. THE RECIPIENT AGREES TO KEEP CONFIDENTIAL AND TO REQUIRE THEIR (ITS) EMPLOYEES TO KEEP CONFIDENTIAL THE INFORMATION CONTAINED HEREON. DISCLOSURE OF THE INFORMATION HEREON SHALL BE MADE ONLY TO THOSE PERSONS WHO REQUIRE SUCH INFORMATION FOR THEIR WORK ON MEMC'S PROJECTS.

CIVIL DETAIL SHEET

MEMC SOI EXPANSION

PROJECT NO.	PLANT	SIZE	BUILDING	TYPE	NUMBER
18091P	16	D	G35	C	501



BILFINGER INDUSTRIAL SERVICES INC.
ENGINEERING
1593 CLAYTON RD., SUITE 305
BALLWIN (ST. LOUIS), MISSOURI 63011, USA
PHONE: 636 391 4300 FAX: 636 391 4487
MO ENGINEERING COA: 2012035465
MO ARCHITECTURAL COA: 2012035388

PROJECT NO:
788169