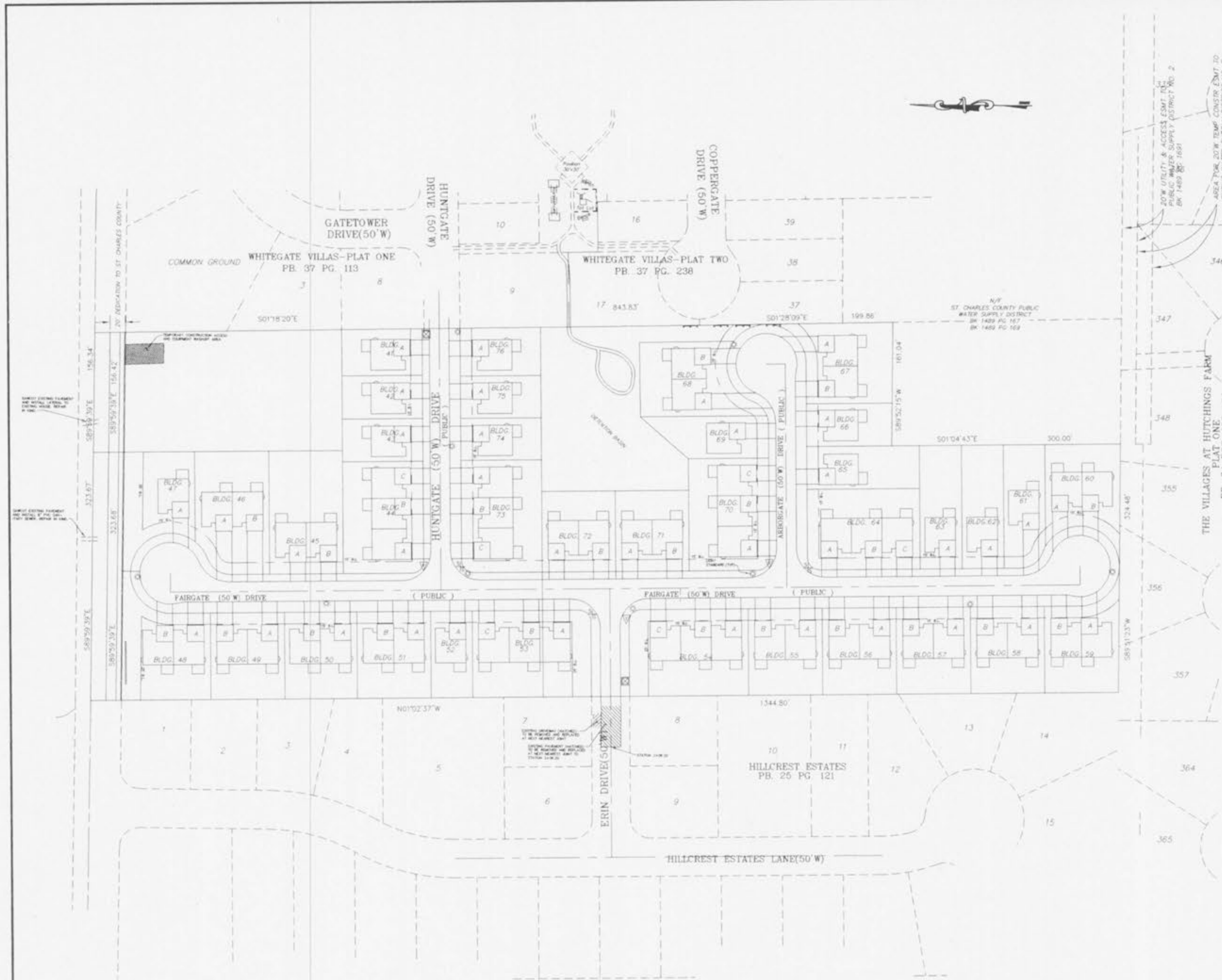


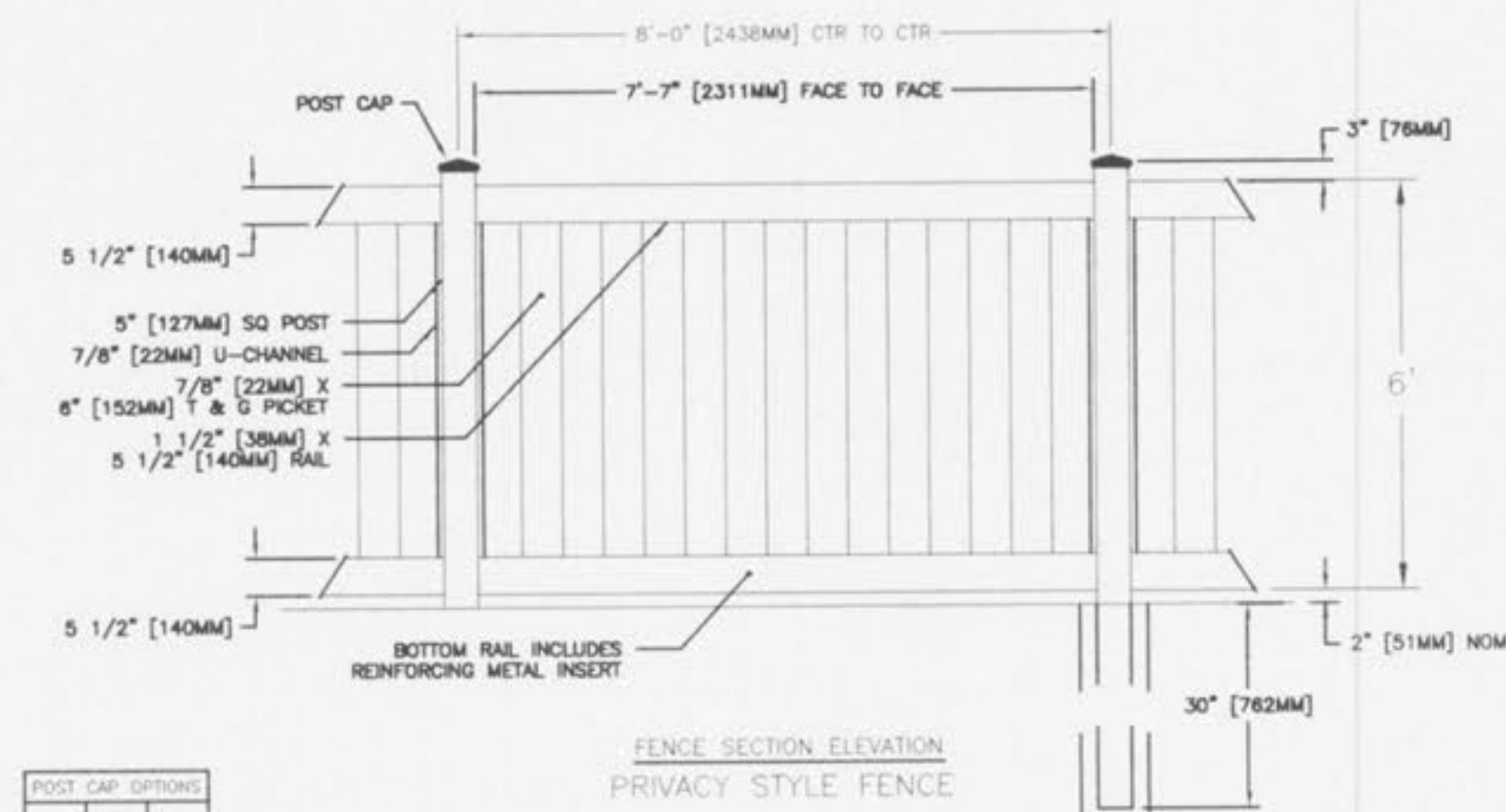
\\1server-prs\projects\02041\dwg\02041DETAILS.dwg, 09/23/2002 01:26:58 PM



YIELD SIGN	
SPEED LIMIT SIGN	
STREET SIGN	
LIGHT STANDARD	

LIGHTING & SIGN DETAIL

NOTE: SIGN POST AND BACKS AND BRACKET ARMS SHALL BE PAINTED BLACK USING CARBOLINE RUSTBOND PENETRATING SEALER SG AND CARBOLINE 133 HB PAINT (OR EQUIVALENT AS APPROVED BY CITY AND MODOT).

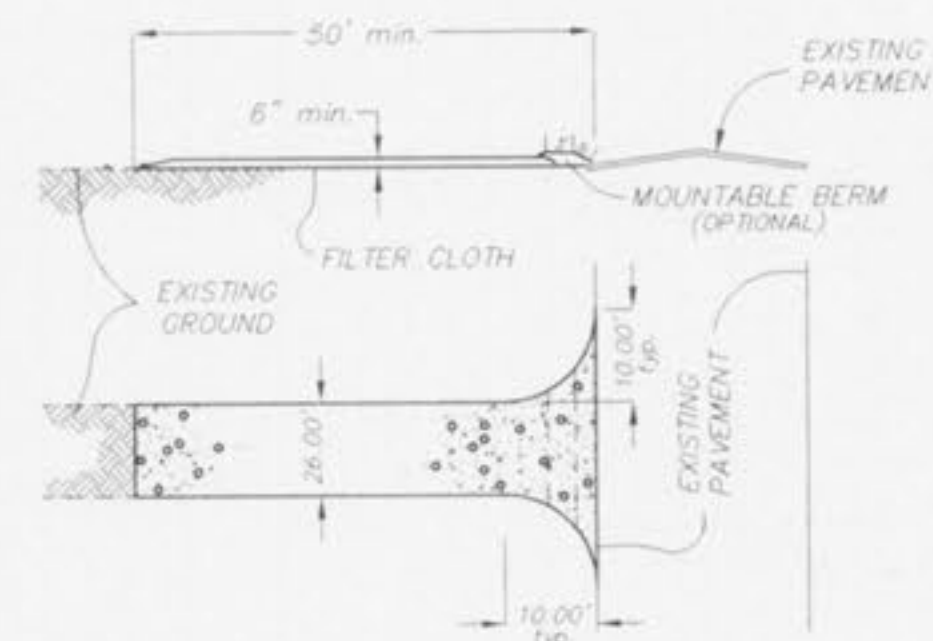


POST CAP OPTIONS

NOTES: 1. METRIC DIMENSIONS ARE NOMINAL EQUIVALENTS TO U.S. DIMENSIONS.
2. SPECIFICATIONS SHOWN CAN BE CHANGED BY MASTER-VALUED ONLY.
3. FOOTING WIDTH TO BE (2X POST WIDTH, MINIMUM DEPTH 30" [762MM]).

VINYL FENCE DETAIL

N.T.S.



CONSTRUCTION SPECIFICATIONS

- Stone Size: Use 2" stone or reclaimed or recycled concrete equivalent.
- Length: As required, but not less than 50 feet (except on a single residence lot where a 30 foot minimum length would apply).
- Thickness: Not less than six (6) inches.
- Width: twenty six (26) foot minimum, but not less than the full width at points where ingress or egress occurs.
- Filter Cloth: Will be placed over the entire area prior to placing of the stone. Filter will not be required on a single family residence lot.
- Surface Water: All surface water flowing or diverted toward construction entrances shall be piped across the entrance. If piping is impractical, a mountable berm with a 5:1 slope will be permitted.
- Maintenance: The entrance shall be maintained in a condition which will prevent tracking or flowing of sediment onto a public right-of-way. This may require periodic top dressing with additional stone as conditions demand and repair and/or cleanout of any measures used to trap sediment. All sediment spilled, dropped, washed or tracked onto the public right-of-way must be removed immediately.
- Washing: Wheels shall be cleaned to remove sediment prior to entrance onto the public right-of-way. When washing is required, it shall be done on an area stabilized with stone and which drains into an approved sediment trapping device.
- Periodic inspection and needed maintenance shall be provided after each rain.

STABILIZED CONSTRUCTION ENTRANCE

N.T.S.

PICKETT RAY & SILVER

333 Mid Rivers Mall Drive
St. Peters, MO 63376
Phone (636) 397-1211
Fax (636) 397-1104

CIVIL ENGINEERS
PLANNERS
LAND SURVEYORS

WHITEGATE VILLAS ADDITION CONSTRUCTION DETAILS

239 FOX HILL ROAD
ST. CHARLES, MO 63301
636-946-9300

Prepared For:
SUMMIT POINTE L.C.

REVISIONS	NO.	DATE	BY	REV	PER CITY OF FALLON	DATE	BY	REV	PER CITY OF FALLON
	1	09-06-02	REV			09-23-02	REV		
	2								

ENGINEERS AUTHENTICATION
The responsibility for professional engineering liability on this project is hereby limited to the set of plans authenticated by the seal, signature, and date hereunder attached. Responsibility is disclaimed for all other engineering plans involved in this project and specifically excludes revisions after this date unless reauthenticated.

PICKETT, RAY & SILVER, INC.

HAROLD J. BARTCH
REGISTERED PROFESSIONAL ENGINEER
E-17751

DRAWN	ABK	DATE	07-15-02
CHECKED	DWD	DATE	07-15-02
PROJECT #	02041.SUPD.01R		
TASK #	2	FIELD BOOK	XXX

WHITEGATE VILLAS
CONSTRUCTION DETAILS
SHEET 20 OF 22
© Copyright 2002 by Pickett, Ray & Silver Inc.